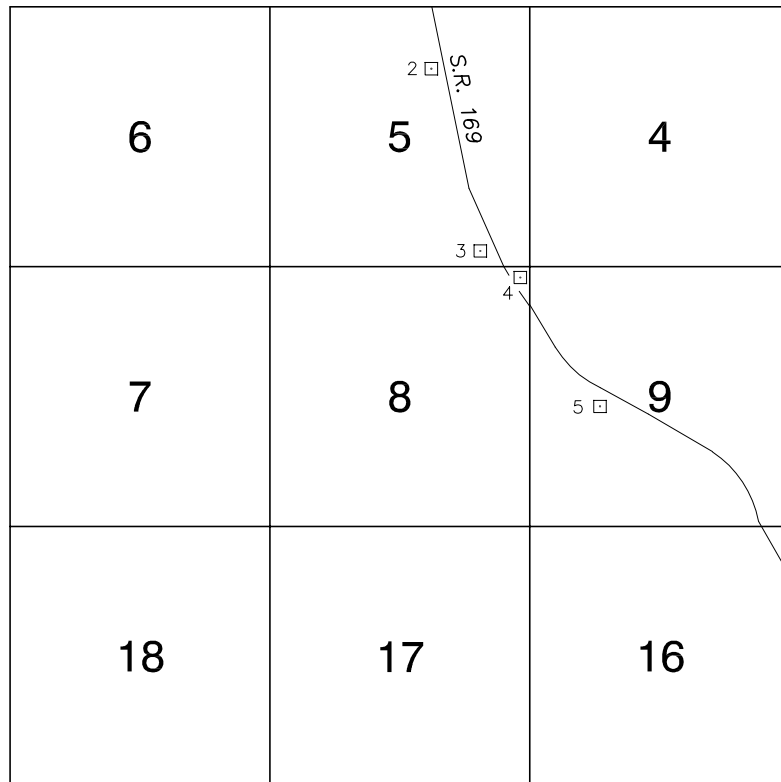


Township 15 South, Range 67 East Northwest Quarter



NORTH AMERICAN VERTICAL
DATUM OF 1988
- ALL ELEVATIONS IN METERS -

No.	STATION	ELEVATION (METERS)	DESCRIPTION
1			LOST 2003
2	3C57 5N6	528.824	FND RIVET AND SQUARE ALUMINUM PLATE, IN A CONCRETE HEADWALL OF A PAIR OF 3' DIAMETER CORRUGATED METAL PIPES, WEST SIDE OF S.R. 169, 0.5 MILES SOUTH OF I-15.
3	3C57 5SES	502.291	FND RIVET AND SQUARE ALUMINUM PLATE, IN CONCRETE HEADWALL OF 4' DIAMETER CORRUGATED METAL PIPE, 280' SOUTH OF MILE MARKER 23, ON WEST SIDE OF S.R. 169 (12' BELOW STREET GRADE), 1.2 MI. SOUTH OF I-15.
4	3C57 8NES	494.043	FND RIVET AND SQUARE ALUMINUM PLATE, IN A CONCRETE HEADWALL OF A PAIR OF 4' DIAMETER CORRUGATED METAL PIPES, ON THE NORTHEAST SIDE OF S.R. 169, 1.4 MILES SOUTH OF I-15.
5	3C57 9W6	492.110	FND 2" BRASS CAP, IN A CONCRETE MONUMENT, SOUTHWEST SIDE OF S.R. 169, 10' SOUTHWEST OF MILE MARKER 22, 2.2 MILES SOUTH OF I-15, 500' SOUTH OF THE LAST SUMMIT LEADING INTO MOAPA VALLEY.
6			
7			
8			
9			
10			
11			

CLARK COUNTY VERTICAL CONTROL v.2003

CLARK COUNTY SURVEYOR'S OFFICE
5051 SOUTH PARADISE ROAD
LAS VEGAS, NEVADA 89119
(702) 455-0640

CONVERSION FACTOR:
METERS X $\left(\frac{3937}{1200}\right)$ = U.S. SURVEY FEET

REVISED 2003

SHEET
1 of 1

15-67
NW