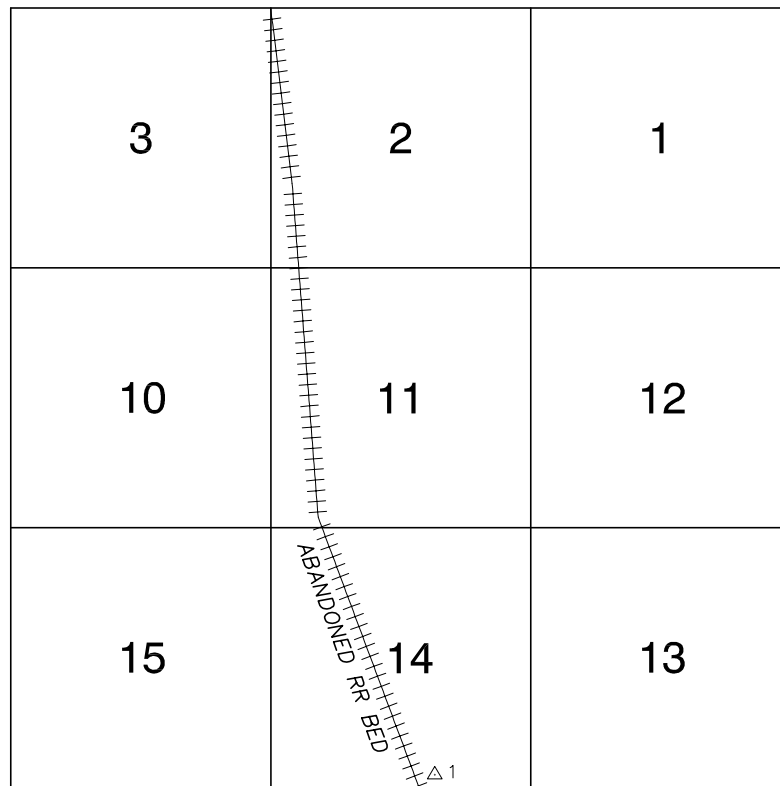


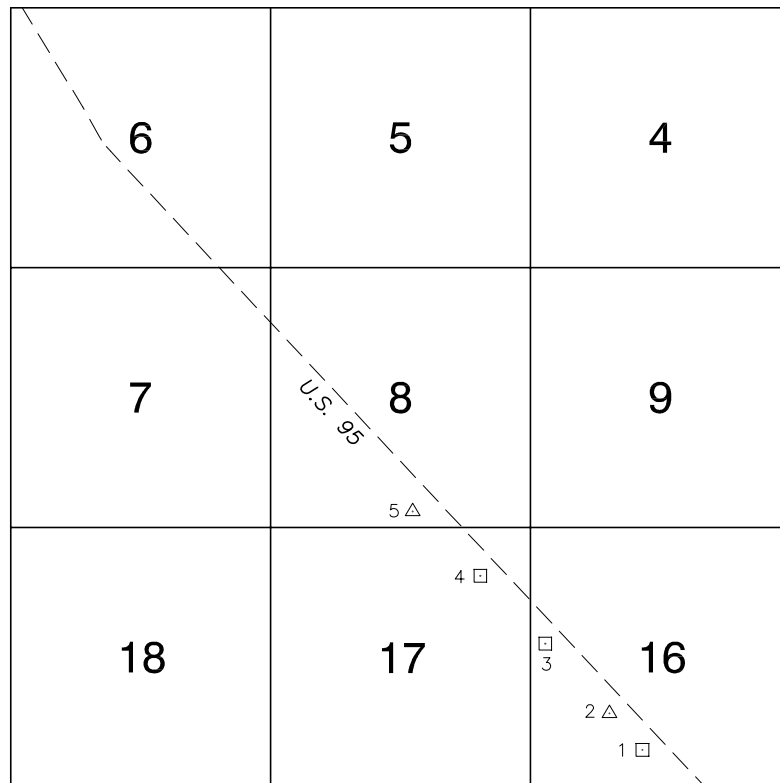
# Township 18 South, Range 59 East Northeast Quarter



NORTH AMERICAN VERTICAL  
DATUM OF 1988  
— ALL ELEVATIONS IN METERS —

No.	STATION	ELEVATION (METERS)	DESCRIPTION
1	BM 111 1907	847.659	F N D 4" USGS BRASS CAP ON AN IRON PIPE 2' ABOVE THE GROUND, 90' SOUTHWEST OF A WOODEN POWER POLE WITH NO NUMBER, 5.0 MILES NORTHWEST OF THE INTERSECTION OF LOG CABIN WAY AND EL CAPITAN WAY ALONG AN ABANDONED RAILROAD BED.
2			
3			
4			
5			
6			
7			
8			
9			
10			
11			
<b>CLARK COUNTY VERTICAL CONTROL v.2003</b>			
CLARK COUNTY SURVEYOR'S OFFICE 5051 SOUTH PARADISE ROAD LAS VEGAS, NEVADA 89119 (702) 455-0640			CONVERSION FACTOR: METERS X $\left(\frac{3937}{1200}\right)$ = U.S. SURVEY FEET
REVISED 2003			SHEET 1 OF 1
			<b>18-59 NE</b>

# Township 18 South, Range 59 East Northwest Quarter



NORTH AMERICAN VERTICAL  
DATUM OF 1988  
— ALL ELEVATIONS IN METERS —

No.	STATION	ELEVATION (METERS)	DESCRIPTION
1	OC89 16S6	896.662	F N D RIVET AND SQUARE ALUMINUM PLATE IN A CONCRETE HEADWALL, SOUTHWEST SIDE OF U.S. 95, 0.7 MILES NORTHWEST OF MILE MARKER 97.
2	Z 398 1980	895.701	F N D USC&GS BRASS CAP, IN A PVC WELL, 280' SOUTHWEST OF THE SOUTHWEST SIDE OF U.S. 95, 0.9 MILES NORTHWEST OF MILE MARKER 97 STAMPED "Z398 1980"
3	OC89 16W4	889.205	F N D RIVET AND SQUARE ALUMINUM PLATE IN A CONCRETE HEADWALL SOUTHWEST SIDE OF U.S. 95, 0.3 MILES NORTHWEST OF MILE MARKER 98.
4	OC89 17NE6	886.471	F N D RIVET AND SQUARE ALUMINUM PLATE IN A CONCRETE HEADWALL, SOUTHWEST SIDE OF U.S. 95, 0.6 MILES NORTHWEST OF MILE MARKER 98.
5	W 370 1963	882.096	F N D USC&GS BRASS CAP, IN A CONCRETE MONUMENT, 300' SOUTHWEST OF THE SOUTHWEST SIDE OF U.S. 95, 0.9 MILES NORTHWEST OF MILE MARKER 98 STAMPED "W370 1963"
6			
7			
8			
9			
10			
11			

## CLARK COUNTY VERTICAL CONTROL v.2003

CLARK COUNTY SURVEYOR'S OFFICE  
5051 SOUTH PARADISE ROAD  
LAS VEGAS, NEVADA 89119  
(702) 455-0640

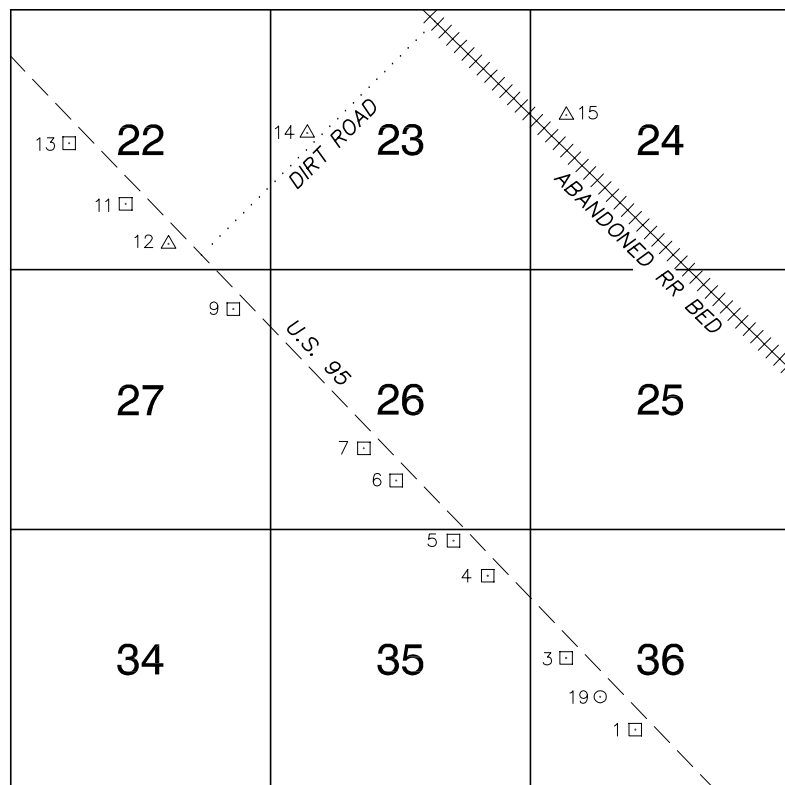
CONVERSION FACTOR:  
METERS X  $\left(\frac{3937}{1200}\right)$  = U.S. SURVEY FEET

REVISED 2003

SHEET  
1 OF 1

18-59  
NW

# Township 18 South, Range 59 East Southeast Quarter



NORTH AMERICAN VERTICAL  
DATUM OF 1988  
— ALL ELEVATIONS IN METERS —

No.	STATION	ELEVATION (METERS)	DESCRIPTION
1	0C89 36S6	876.238	F N D RIVET AND SQUARE ALUMINUM PLATE IN A CONCRETE HEADWALL, SOUTH SIDE OF U.S. 95, 0.6 MILES SOUTHEAST OF MILE MARKER 94.
2			LOST 2003
3	0C89 36W4	886.223	F N D RIVET AND SQUARE ALUMINUM PLATE IN A CONCRETE HEADWALL, SOUTH SIDE OF U.S. 95 AT MILE MARKER 94.
4	0C89 35NE6	890.514	F N D RIVET AND SQUARE ALUMINUM PLATE IN A CONCRETE HEADWALL, SOUTH SIDE OF U.S. 95, 0.6 MILES SOUTHEAST OF MILE MARKER 95.
5	0C89 35NNE6	892.928	F N D RIVET AND SQUARE ALUMINUM PLATE IN A CONCRETE HEADWALL, SOUTH SIDE OF U.S. 95, 0.4 MILES SOUTHEAST OF MILE MARKER 95.
6	0C89 26S6	896.499	F N D RIVET AND SQUARE ALUMINUM PLATE IN A CONCRETE HEADWALL, SOUTH SIDE OF U.S. 95, 23' NORTHWEST OF MILE MARKER 94 <sup>97</sup> .
7	0C89 26SW6	897.486	F N D RIVET AND SQUARE ALUMINUM PLATE IN A CONCRETE HEADWALL, SOUTH SIDE OF U.S. 95, 0.9 MILES SOUTHEAST OF MILE MARKER 96.
8			LOST 2003
9	0C89 27NE6	901.788	F N D RIVET AND SQUARE ALUMINUM PLATE IN A CONCRETE HEADWALL, SOUTHWEST SIDE OF U.S. 95, WEST CORNER OF THE INTERSECTION OF NUVAKAI BLVD. (EASTERLY) AND PAIUTE WAY. (WESTERLY).
10			LOST 2003
11	0C89 22S6	902.933	F N D RIVET AND SQUARE ALUMINUM PLATE IN A CONCRETE HEADWALL, SOUTHWEST SIDE OF U.S. 95, 0.4 MILES NORTHWEST OF MILE MARKER 96.
<b>CLARK COUNTY VERTICAL CONTROL v.2003</b>			
CLARK COUNTY SURVEYOR'S OFFICE 5051 SOUTH PARADISE ROAD LAS VEGAS, NEVADA 89119 (702) 455-0640			CONVERSION FACTOR: METERS X $\left(\frac{3937}{1200}\right)$ = U.S. SURVEY FEET
REVISED 2003			SHEET 1 OF 2
			<b>18-59 SE</b>

No.	STATION	ELEVATION (METERS)	DESCRIPTION	No.	STATION	ELEVATION (METERS)	DESCRIPTION
12	T 370 1963	904.358	F N D USC&GS BRASS CAP IN A CONCRETE MONUMENT, 200' SOUTHWEST OF U.S. 95, AT MILE MARKER 96 STAMPED "T370 1963"	25			
13	OC89 22W6	901.642	F N D RIVET AND SQUARE ALUMINUM PLATE IN A CONCRETE HEADWALL, SOUTHWEST SIDE OF U.S. 95 0.2 MILES SOUTHEAST OF MILE MARKER 97.	26			
14	S 370 1963	860.744	F N D USC&GS BRASS CAP IN A CONCRETE MONUMENT, NORTHEAST SIDE OF U.S. 95, 0.9 MILES NORTHEAST OF MILE MARKER 96, 40' NORTHWEST OF A DIRT ROAD, STAMPED "S370 1963"	27			
15	V 314 1950	842.177	F N D USC&GS B.C. IN A CONC. MON., 4.0 MILES NORTHWEST OF THE INTERSECTION OF LOG CABIN WY. & EL CAPITAN WY. ALONG AN ABANDONED RR BED, 130' NORTH OF A WOODEN POWER POLE(#2090?) STAMPED "V314 1950"	28			
16			LOST 2003	29			
17			LOST 2003	30			
18			LOST 2003	31			
19	7C89 36W6	883.136	F N D RIVET AND ROUND ALUMINUM PLATE IN A CONCRETE HEADWALL, SOUTH SIDE OF U.S. 95, 0.2 MILES SOUTHEAST OF MILE MARKER 94 <sup>95</sup>	32			
20				33			
21				34			
22				35			
23				<b>CLARK COUNTY VERTICAL CONTROL v.2003</b>  CLARK COUNTY SURVEYOR'S OFFICE 5051 SOUTH PARADISE ROAD LAS VEGAS, NEVADA 89119 (702) 455-0640			
24							
				CONVERSION FACTOR: METERS X $\left(\frac{3937}{1200}\right)$ = U.S. SURVEY FEET  REVISED 2003      SHEET 2 OF 2 <b>18-59 SE</b>			

# Township 18 South, Range 59 East Southwest Quarter

19	20	21
30	29	28
31	32	33

NORTH AMERICAN VERTICAL  
DATUM OF 1988  
— ALL ELEVATIONS IN METERS —

No.	STATION	ELEVATION (METERS)	DESCRIPTION
1	OC89 21NE6	898.042	F RIVET AND SQUARE ALUMINUM PLATE IN A CONCRETE N HEADWALL, SOUTHWEST SIDE OF U.S. 95, 0.2 MILES D SOUTHEAST OF MILE MARKER 97.
2	A 399 1980	903.287	F USC&GS BRASS CAP, IN A PVC WELL, STAMPED "A399 N 1980", SOUTHWEST SIDE OF U.S. 95., 210' SOUTHEAST D OF MILE MARKER 97.
3			
4			
5			
6			
7			
8			
9			
10			
11			
CLARK COUNTY VERTICAL CONTROL v.2003			
CLARK COUNTY SURVEYOR'S OFFICE 5051 SOUTH PARADISE ROAD LAS VEGAS, NEVADA 89119 (702) 455-0640		CONVERSION FACTOR: METERS X $\left(\frac{3937}{1200}\right)$ = U.S. SURVEY FEET	
		REVISED 2003	SHEET 1 OF 1 <b>18-59</b> <b>SW</b>