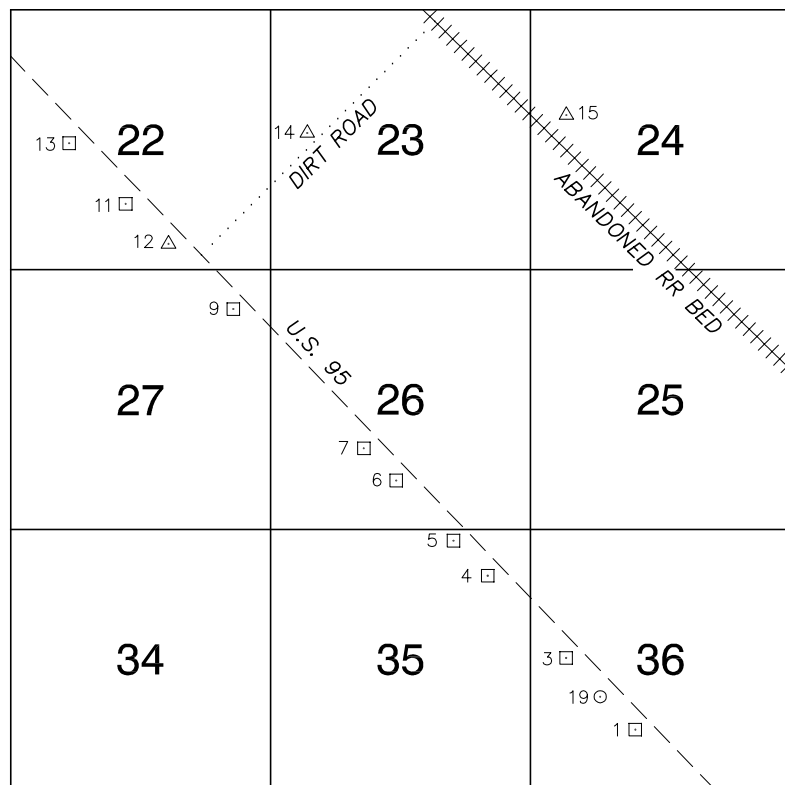


Township 18 South, Range 59 East Southeast Quarter



NORTH AMERICAN VERTICAL
DATUM OF 1988
— ALL ELEVATIONS IN METERS —

No.	STATION	ELEVATION (METERS)	DESCRIPTION
1	0C89 36S6	876.238	F N D RIVET AND SQUARE ALUMINUM PLATE IN A CONCRETE HEADWALL, SOUTH SIDE OF U.S. 95, 0.6 MILES SOUTHEAST OF MILE MARKER 94.
2			LOST 2003
3	0C89 36W4	886.223	F N D RIVET AND SQUARE ALUMINUM PLATE IN A CONCRETE HEADWALL, SOUTH SIDE OF U.S. 95 AT MILE MARKER 94.
4	0C89 35NE6	890.514	F N D RIVET AND SQUARE ALUMINUM PLATE IN A CONCRETE HEADWALL, SOUTH SIDE OF U.S. 95, 0.6 MILES SOUTHEAST OF MILE MARKER 95.
5	0C89 35NNE6	892.928	F N D RIVET AND SQUARE ALUMINUM PLATE IN A CONCRETE HEADWALL, SOUTH SIDE OF U.S. 95, 0.4 MILES SOUTHEAST OF MILE MARKER 95.
6	0C89 26S6	896.499	F N D RIVET AND SQUARE ALUMINUM PLATE IN A CONCRETE HEADWALL, SOUTH SIDE OF U.S. 95, 23' NORTHWEST OF MILE MARKER 94 ⁹⁷ .
7	0C89 26SW6	897.486	F N D RIVET AND SQUARE ALUMINUM PLATE IN A CONCRETE HEADWALL, SOUTH SIDE OF U.S. 95, 0.9 MILES SOUTHEAST OF MILE MARKER 96.
8			LOST 2003
9	0C89 27NE6	901.788	F N D RIVET AND SQUARE ALUMINUM PLATE IN A CONCRETE HEADWALL, SOUTHWEST SIDE OF U.S. 95, WEST CORNER OF THE INTERSECTION OF NUVAKAI BLVD. (EASTERLY) AND PAIUTE WAY. (WESTERLY).
10			LOST 2003
11	0C89 22S6	902.933	F N D RIVET AND SQUARE ALUMINUM PLATE IN A CONCRETE HEADWALL, SOUTHWEST SIDE OF U.S. 95, 0.4 MILES NORTHWEST OF MILE MARKER 96.
CLARK COUNTY VERTICAL CONTROL v.2003			
CLARK COUNTY SURVEYOR'S OFFICE 5051 SOUTH PARADISE ROAD LAS VEGAS, NEVADA 89119 (702) 455-0640			CONVERSION FACTOR: METERS X $\left(\frac{3937}{1200}\right)$ = U.S. SURVEY FEET
REVISED 2003			SHEET 1 OF 2
			18-59 SE

No.	STATION	ELEVATION (METERS)	DESCRIPTION	No.	STATION	ELEVATION (METERS)	DESCRIPTION
12	T 370 1963	904.358	F N D USC&GS BRASS CAP IN A CONCRETE MONUMENT, 200' SOUTHWEST OF U.S. 95, AT MILE MARKER 96 STAMPED "T370 1963"	25			
13	0C89 22W6	901.642	F N D RIVET AND SQUARE ALUMINUM PLATE IN A CONCRETE HEADWALL, SOUTHWEST SIDE OF U.S. 95 0.2 MILES SOUTHEAST OF MILE MARKER 97.	26			
14	S 370 1963	860.744	F N D USC&GS BRASS CAP IN A CONCRETE MONUMENT, NORTHEAST SIDE OF U.S. 95, 0.9 MILES NORTHEAST OF MILE MARKER 96, 40' NORTHWEST OF A DIRT ROAD, STAMPED "S370 1963"	27			
15	V 314 1950	842.177	F N D USC&GS B.C. IN A CONC. MON., 4.0 MILES NORTHWEST OF THE INTERSECTION OF LOG CABIN WY. & EL CAPITAN WY. ALONG AN ABANDONED RR BED, 130' NORTH OF A WOODEN POWER POLE(#2090?) STAMPED "V314 1950"	28			
16			LOST 2003	29			
17			LOST 2003	30			
18			LOST 2003	31			
19	7C89 36W6	883.136	F N D RIVET AND ROUND ALUMINUM PLATE IN A CONCRETE HEADWALL, SOUTH SIDE OF U.S. 95, 0.2 MILES SOUTHEAST OF MILE MARKER 94 ⁹⁵	32			
20				33			
21				34			
22				35			
23				CLARK COUNTY VERTICAL CONTROL v.2003			
24				<div>CLARK COUNTY SURVEYOR'S OFFICE 5051 SOUTH PARADISE ROAD LAS VEGAS, NEVADA 89119 (702) 455-0640</div> <div>CONVERSION FACTOR: METERS X $\left(\frac{3937}{1200}\right)$ = U.S. SURVEY FEET</div> <div>REVISED 2003</div>			
						SHEET 2 OF 2	18-59 SE