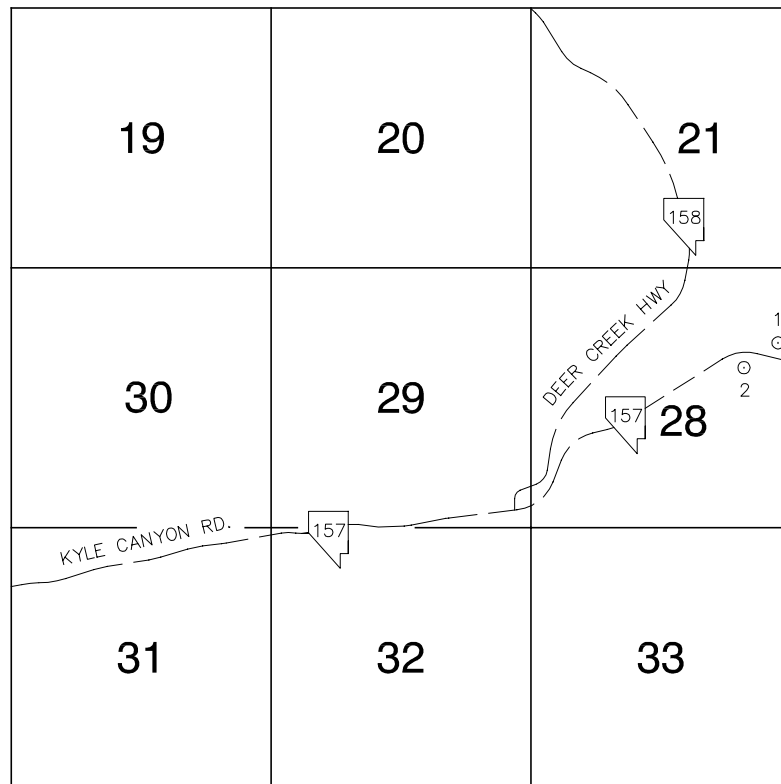


Township 19 South, Range 57 East Southwest Quarter



NORTH AMERICAN VERTICAL
DATUM OF 1988
— ALL ELEVATIONS IN METERS —

No.	STATION	ELEVATION (METERS)	DESCRIPTION
1	3C97 28NE6 2003	2007.009	RIVET AND ROUND ALUMINUM PLATE IN A CONCRETE STEP, IN FRONT OF A 10' X 15' BUILDING WITH A GREEN ROOF. ± 125 FEET NORTH OF KYLE CANYON RD, ± 0.5 MILES WEST OF MILE MARKER 5.
2	3C97 28NE6 2003	2017.733	RIVET AND ROUND ALUMINUM PLATE IN THE NE CORNER OF A CONCRETE ELECTRICAL PAD, SOUTH SIDE OF KYLE CANYON RD, 0.5 MILES WEST OF MILE MARKER 5
3			
4			
5			
6			
7			
8			
9			
10			
11			

CLARK COUNTY VERTICAL CONTROL v.2003

CLARK COUNTY SURVEYOR'S OFFICE
5051 SOUTH PARADISE ROAD
LAS VEGAS, NEVADA 89119
(702) 455-0640

CONVERSION FACTOR:
METERS X $\left(\frac{3937}{1200}\right)$ = U.S. SURVEY FEET

REVISED
08/01/2003

SHEET
1 OF 1

19-57
SW