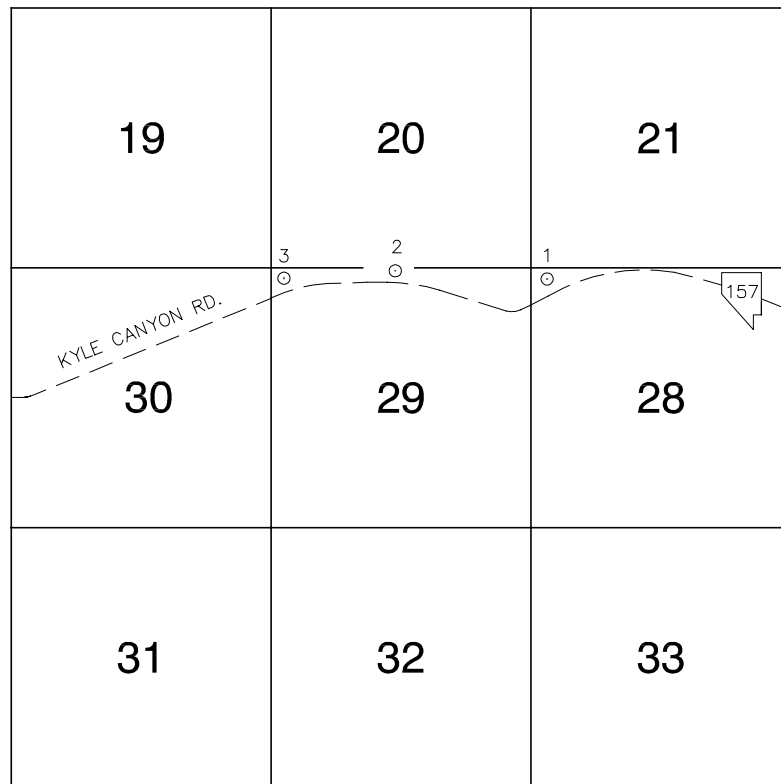


# Township 19 South, Range 58 East Southwest Quarter



NORTH AMERICAN VERTICAL  
DATUM OF 1988  
— ALL ELEVATIONS IN METERS —

No.	STATION	ELEVATION (METERS)	DESCRIPTION
1	3C98 28NWS 2003	1537.930	S E T RIVET AND ROUND ALUMINUM PLATE IN THE CENTER OF A CONCRETE HEADWALL, NORTH SIDE OF KYLE CANYON RD. ± 0.2 MILES WEST OF MILE MARKER 10.
2	3C98 29N4 2003	1577.662	S E T RIVET AND ROUND ALUMINUM PLATE IN A CONCRETE HEADWALL, NORTH SIDE OF KYLE CANYON RD. ± 0.1 MILES EAST OF MILE MARKER 09.
3	3C98 29NWS 2003	1606.253	S E T RIVET AND ROUND ALUMINUM PLATE IN A CONCRETE HEADWALL, NORTH SIDE OF KYLE CANYON RD. ± 0.5 MILES EAST OF HARRIS SPRINGS RD.
4			
5			
6			
7			
8			
9			
10			
11			

## CLARK COUNTY VERTICAL CONTROL v.2003

CLARK COUNTY SURVEYOR'S OFFICE  
5051 SOUTH PARADISE ROAD  
LAS VEGAS, NEVADA 89119  
(702) 455-0640

CONVERSION FACTOR:  
METERS X  $\left(\frac{3937}{1200}\right)$  = U.S. SURVEY FEET

REVISED  
08/01/2003

SHEET  
1 OF 1

19-58  
SW