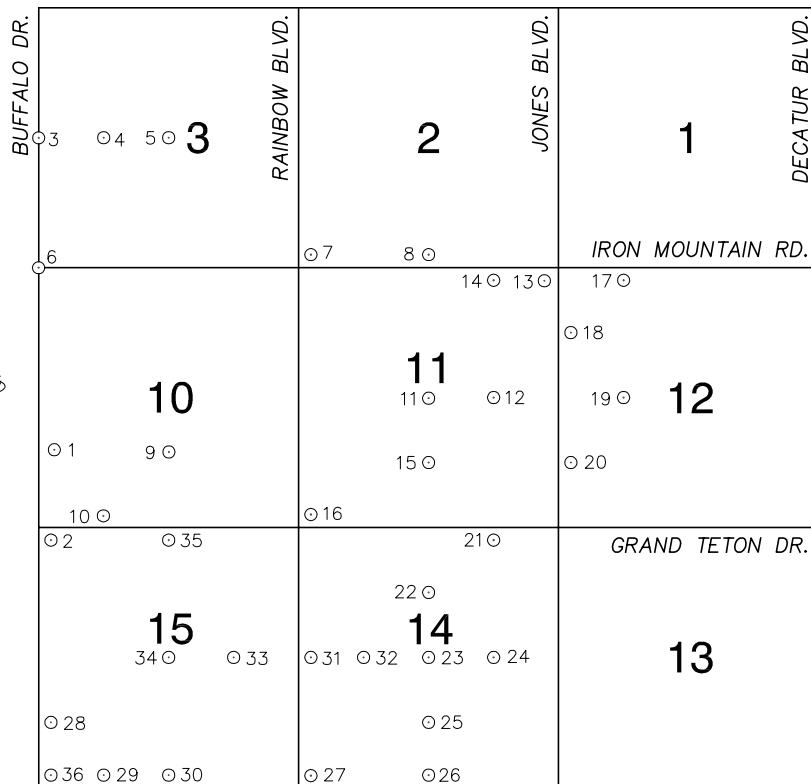


Township 19 South, Range 60 East Northeast Quarter

MOCCASIN RD.



ELKHORN RD.

NORTH AMERICAN VERTICAL
DATUM OF 1988
— ALL ELEVATIONS IN METERS —

No.	STATION	ELEVATION (METERS)	DESCRIPTION
1	8LV90 10SWW6	738.120	F N D CITY OF LAS VEGAS RIVET AND ROUND PLATE IN CONCRETE CYLINDER. SOUTHEAST CORNER OF BUFFALO DR. AND RACEL ST.
2	8LV90 15NWS	736.435	F N D CITY OF LAS VEGAS RIVET AND ROUND PLATE IN LVVWD CONCRETE PAD., SOUTHEAST CORNER OF BUFFALO DR. AND GRAND TETON DR.
3	1LV90 3W4	748.153	F N D BLM BRASS CAP AT BUFFALO DR. AND LOG CABIN WAY.
4	9LV90 3W6	747.879	F N D BLM BRASS CAP AT LOG CABIN WAY AND PIONEER WAY.
5	9LV90 3C4	744.927	F N D BLM BRASS CAP AT LOG CABIN WAY AND TENAYA WAY.
6	1LV90 3SWW6	745.000	F N D BLM BRASS CAP AT BUFFALO DR. AND O'HARE RD.
7	6LV90 2SWS	737.543	F N D CITY OF LAS VEGAS RIVET AND ROUND PLATE IN CONCRETE CYLINDER. NORTHEAST CORNER OF RAINBOW BLVD. AND IRON MTN. RD.
8	8LV90 2S4	733.044	F N D CITY OF LAS VEGAS RIVET AND ROUND PLATE IN CONCRETE CYLINDER. NORTHWEST CORNER OF IRON MTN. RD. AND TORREY PINES DR.
9	6LV90 10S6	730.000	F N D CITY OF LAS VEGAS RIVET AND ROUND PLATE IN CONCRETE CYLINDER, SOUTHWEST CORNER OF RACEL ST. AND TENAYA WAY, +/- 100' SOUTH OF RACEL ST.
10	8LV90 10SSW6	730.750	F N D CITY OF LAS VEGAS RIVET AND ROUND PLATE IN CONCRETE CYLINDER, NORTHWEST CORNER OF GRAND TETON DR. AND PIONEER WAY NEAR PT OF PIONEER WAY
11	8LV90 11C4	726.355	F N D CITY OF LAS VEGAS RIVET AND ROUND PLATE IN CONCRETE CYLINDER. SOUTHEAST CORNER OF HORSE DR. AND TORREY PINES DR.

CLARK COUNTY VERTICAL CONTROL v.2003

CLARK COUNTY SURVEYOR'S OFFICE
5051 SOUTH PARADISE ROAD
LAS VEGAS, NEVADA 89119
(702) 455-0640

CONVERSION FACTOR:

METERS X $\left(\frac{3937}{1200}\right)$ = U.S. SURVEY FEET

REVISED 2003

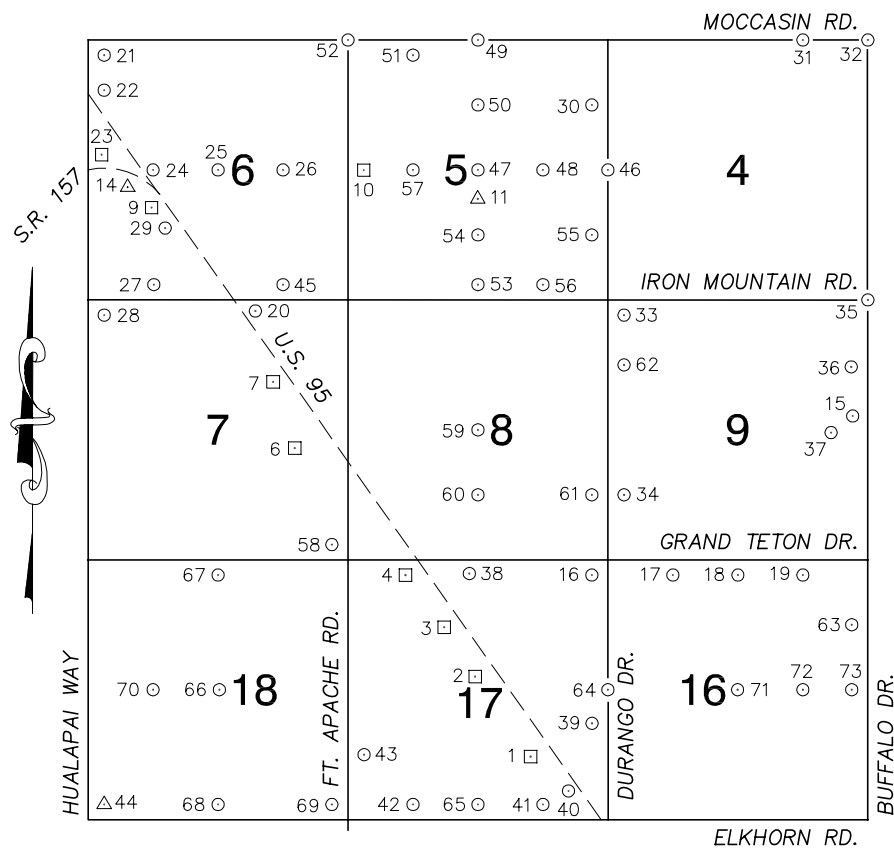
SHEET
1 OF 3

19-60
NE

No.	STATION	ELEVATION (METERS)	DESCRIPTION	No.	STATION	ELEVATION (METERS)	DESCRIPTION
12	8LV90 11E6	725.043	F N D CITY OF LAS VEGAS RIVET AND ROUND PLATE IN CONCRETE CYLINDER. SOUTHEAST CORNER OF HORSE DR. AND MAVERICK ST.	25	0LV90 14S6	715.409	F N D 1 1/2" ALUMINUM CAP AT TORREY PINES DR. AND SEVERENCE LN. STAMPED "PLS 7004".
13	8LV90 11NES	727.723	F N D CITY OF LAS VEGAS RIVET AND ROUND PLATE IN CONCRETE CYLINDER. SOUTHWEST CORNER OF JONES BLVD. AND IRON MTN. RD.	26	5LV90 14S4	713.946	F N D CITY OF LAS VEGAS RIVET AND ROUND PLATE IN MAILBOX PAD, NORTHWEST CORNER OF ELKHORN RD. AND TORREY PINES DR.
14	8LV90 11NNE6	730.142	F N D CITY OF LAS VEGAS RIVET AND ROUND PLATE IN CONCRETE CYLINDER. SOUTHWEST CORNER OF IRON MT. RD. AND MAVERICK ST.	27	5LV90 14SWS	717.041	F N D CITY OF LAS VEGAS RIVET AND ROUND PLATE IN MAILBOX PAD, NORTHEAST CORNER OF RAINBOW BLVD. AND ELKHORN RD.
15	6LV90 11S6	723.889	F N D CITY OF LAS VEGAS RIVET AND ROUND PLATE IN TRANSFORMER CONCRETE PAD. +/- 200' EAST OF TORREY PINES DR. NEAR 6375 RACEL ST.	28	8LV90 15SWW6	732.465	F N D CITY OF LAS VEGAS RIVET AND ROUND PLATE IN TOP OF CURB, NORTHEAST CORNER OF BUFFALO DR. AND BRIDLEHORN AVE.
16	1LV90 11SWS	724.310	F N D CITY OF LAS VEGAS RIVET AND ROUND PLATE IN TOP OF CURB, SOUTHEAST CORNER OF RAINBOW BLVD. AND FLANAGAN DR. +/- 50' EAST OF RAINBOW BLVD.	29	5LV90 15SSW6	728.637	F N D CITY OF LAS VEGAS RIVET AND ROUND PLATE IN TOP OF CURB, NORTHEAST CORNER OF ELKHORN RD. AND PIONEER WAY NEAR PT OF PIONEER WAY.
17	8LV90 12NNW6	725.661	F N D CITY OF LAS VEGAS RIVET AND ROUND PLATE IN CONCRETE CYLINDER, SOUTHWEST CORNER OF IRON MTN. RD. AND LEON AVE.	30	6LV90 15S4	720.680	F N D CITY OF LAS VEGAS RIVET AND ROUND PLATE IN TOP OF CURB, NORTHWEST CORNER OF ELKHORN RD. AND TENAYA WAY NEAR PC OF TENAYA WAY.
18	8LV90 12NWW6	725.380	F N D CITY OF LAS VEGAS RIVET AND ROUND PLATE IN CONCRETE CYLINDER, NORTHEAST CORNER OF JONES BLVD. AND BRENT LN.	31	9LV90 14W4	719.758	F N D CITY OF LAS VEGAS RIVET AND ROUND PLATE IN CONCRETE MAILBOX PAD, NORTHEAST CORNER OF RAINBOW BLVD. AND FARM RD. NEAR 6770 RAINBOW BLVD.
19	8LV90 12W6	721.470	F N D CITY OF LAS VEGAS RIVET AND ROUND PLATE IN CONCRETE CYLINDER, SOUTHWEST CORNER OF HORSE DR. AND LEON AVE.	32	8LV90 14W6	719.023	F N D CITY OF LAS VEGAS RIVET AND ROUND PLATE IN CONCRETE TELEPHONE PAD, 1/4 MILE EAST OF RAINBOW BLVD. ON NORTH SIDE OF FARM RD.
20	8LV90 12SWW6	720.547	F N D CITY OF LAS VEGAS RIVET AND ROUND PLATE IN CONCRETE CYLINDER, NORTHEAST CORNER OF JONES BLVD. AND RACEL ST.	33	9LV90 15E6	721.525	F N D CITY OF LAS VEGAS RIVET AND ROUND PLATE IN CONCRETE CYLINDER, SOUTHWEST CORNER OF FARM RD. AND RIO VISTA ST.
21	8LV90 14NNE6	720.144	F N D CITY OF LAS VEGAS RIVET AND ROUND PLATE IN CONCRETE PAD, +/- 120' EAST OF MAVERICK ST. NEAR 6181 GRAND TETON DR.	34	9LV90 15C4	723.509	F N D CITY OF LAS VEGAS RIVET AND ROUND PLATE IN TOP OF CURB, SOUTHWEST CORNER OF FARM RD. AND TENAYA WAY.
22	0LV90 14N6	719.707	F N D CITY OF LAS VEGAS RIVET AND ROUND PLATE IN CONCRETE PAD, NEAR 6440 WEST WHISPERING SANDS DR.	35	8LV90 15N4	728.341	F N D CITY OF LAS VEGAS RIVET AND ROUND PLATE IN CONCRETE CYLINDER SOUTHWEST CORNER OF GRAND TETON DR. AND TENAYA WAY.
23	9LV90 14C4	717.222	F N D CITY OF LAS VEGAS RIVET AND ROUND PLATE IN CONCRETE PAD, SOUTHWEST CORNER OF FARM RD. AND TORREY PINES DR.	CLARK COUNTY VERTICAL CONTROL v.2003 CLARK COUNTY SURVEYOR'S OFFICE 5051 SOUTH PARADISE ROAD LAS VEGAS, NEVADA 89119 (702) 455-0640			
24	9LV90 14E6	716.301	F N D CITY OF LAS VEGAS RIVET AND ROUND PLATE IN CONCRETE CYLINDER, NORTHEAST CORNER OF FARM RD. AND MAVERICK ST.				
				CONVERSION FACTOR: METERS X $\left(\frac{3937}{1200}\right)$ = U.S. SURVEY FEET REVISED 2003 SHEET 2 OF 3 19-60 NE			

No.	STATION	ELEVATION (METERS)	DESCRIPTION	No.	STATION	ELEVATION (METERS)	DESCRIPTION
36	8LV90 15SWS	735.381	F N D CITY OF LAS VEGAS RIVET AND ROUND PLATE IN TOP OF CURB, NORTHEAST CORNER OF BUFFALO DR. AND ELKHORN RD. NEAR PT OF BUFFALO DR.	49			
37				50			
38				51			
39				52			
40				53			
41				54			
42				55			
43				56			
44				57			
45				58			
46				59			
47				CLARK COUNTY VERTICAL CONTROL v.2003 CLARK COUNTY SURVEYOR'S OFFICE 5051 SOUTH PARADISE ROAD LAS VEGAS, NEVADA 89119 (702) 455-0640			
48							
				CONVERSION FACTOR: METERS X $\left(\frac{3937}{1200}\right)$ = U.S. SURVEY FEET REVISED 2003 SHEET 3 OF 3 19-60 NE			

Township 19 South, Range 60 East Northwest Quarter



NORTH AMERICAN VERTICAL
DATUM OF 1988
— ALL ELEVATIONS IN METERS —

No.	STATION	ELEVATION (METERS)	DESCRIPTION
1	OC90 17SE6	784.363	F N D RIVET AND SQUARE ALUMINUM PLATE IN TOP CENTER OF HEADWALL ON THE WEST SIDE OF U.S. 95 NEAR MILE MARKER 89.60.
2	OC90 17C4	793.421	F N D RIVET AND SQUARE ALUMINUM PLATE IN TOP CENTER OF HEADWALL ON THE WEST SIDE OF U.S. 95 NEAR MILE MARKER 89.90.
3	OC90 17N6	799.086	F N D RIVET AND SQUARE ALUMINUM PLATE IN TOP CENTER OF HEADWALL ON THE WEST SIDE OF U.S. 95 NEAR MILE MARKER 90.15.
4	OC90 17NWS	808.524	F N D RIVET AND SQUARE ALUMINUM PLATE IN TOP CENTER OF HEADWALL ON THE WEST SIDE OF U.S. 95 NEAR MILE MARKER 90.55.
5			LOST 2003
6	OC90 7SE6	820.746	F N D RIVET AND SQUARE ALUMINUM PLATE IN TOP CENTER OF HEADWALL ON THE WEST SIDE OF U.S. 95 NEAR MILE MARKER 91.05.
7	OC90 7N6	833.911	F N D RIVET AND SQUARE ALUMINUM PLATE IN TOP CENTER OF HEADWALL ON THE WEST SIDE OF U.S. 95 NEAR MILE MARKER 91.5.
8			LOST 2003
9	2C90 6SWW6	852.165	F N D RIVET AND SQUARE ALUMINUM PLATE IN TOP OF HEADWALL ON THE WEST SIDE OF U.S. 95, +/- 400' SOUTH OF KYLE CANYON RD. (S.R. 157).
10	2C90 5W4	811.861	F N D SQUARE ALUMINUM PLATE WIRED TO A REBAR, 100' NORTHEAST OF FORT APACHE RD. AND LOG CABIN WAY.
11	V 169 1935	791.320	F N D USC&GS BRASS CAP, STAMPED "V169 1935", 165' SOUTH OF LOG CABIN WAY AND 100' EAST OF EL CAPITAN WAY. 35' NORTHEAST OF POWER POLE.

CLARK COUNTY VERTICAL CONTROL v.2003

CLARK COUNTY SURVEYOR'S OFFICE
5051 SOUTH PARADISE ROAD
LAS VEGAS, NEVADA 89119
(702) 455-0640

CONVERSION FACTOR:

METERS X $\left(\frac{3937}{1200}\right)$ = U.S. SURVEY FEET

REVISED
04/03/2003

SHEET
1 OF 4

19-60
NW

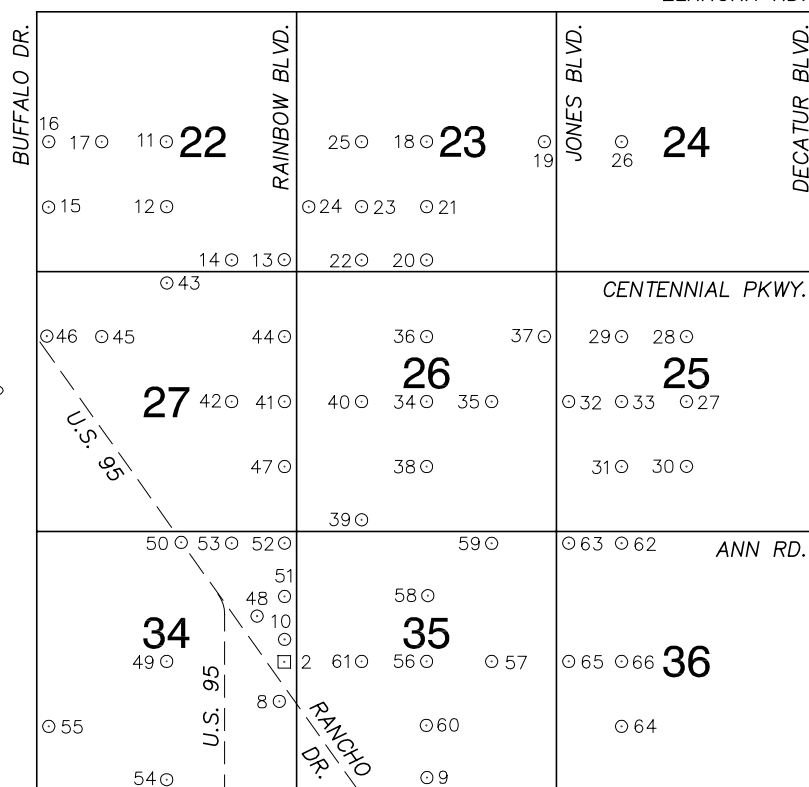
No.	STATION	ELEVATION (METERS)	DESCRIPTION	No.	STATION	ELEVATION (METERS)	DESCRIPTION
12			LOST 2003	25	7LV90 6C4	837.065	F N D CITY OF LAS VEGAS RIVET AND ROUND PLATE IN CONCRETE CYLINDER, SOUTHWEST CORNER OF LOG CABIN WAY AND GRAND CANYON DR.
13			LOST 2003	26	7LV90 6E6	823.711	F N D CITY OF LAS VEGAS RIVET AND ROUND PLATE IN CONCRETE CYLINDER, SOUTHWEST CORNER OF LOG CABIN WAY AND TEE PEE LN.
14	2C90 6W6	858.813	F N D USDA BRASS CAP ON AN IRON PIPE, 140' SOUTHWEST OF TELEPHONE POLE #26994T, SOUTHWEST CORNER OF THE U.S. 95/KYLE CANYON RD. TURNOFF.	27	8LV90 6SSW6	853.705	F N D CITY OF LAS VEGAS RIVET AND ROUND PLATE IN CONCRETE CYLINDER, NORTHWEST CORNER OF IRON MTN. RD. AND CONQUISTADOR ST.
15	2C90 9E4 2002	740.097	S E T RIVET AND ROUND ALUMINUM PLATE IN TOP OF CURB. APPROX. 0.5 MILE NORTH OF GRAND TETON DR. ON THE WEST SIDE OF BUFFALO DR.	28	7LV90 7NWS	865.673	F N D CITY OF LAS VEGAS RIVET AND ROUND PLATE IN CONCRETE CYLINDER, SOUTHEAST CORNER OF HUALAPAI WAY AND IRON MTN. RD.
16	0LV90 17NES	774.114	F N D CITY OF LAS VEGAS RIVET AND ROUND PLATE IN TOP OF CURB, SOUTHWEST CORNER OF DURANGO DR. AND GRAND TETON DR. NEAR 1/2 DELTA.	29	7LV90 6SWW6	863.230	F N D NDOT BRASS DISC ON WEST SIDE OF WEST FRONTAGE RD. 0.15 MILE SOUTH OF KYLE CANYON RD., STAMPED "311+73.68 PC DIST. 39.47 90 DEGREES".
17	2C90 16NNW6 2002	764.020	S E T RIVET AND ROUND ALUMINUM PLATE IN TOP OF CURB, SOUTH SIDE OF GRAND TETON DR. APPROX. 1320' EAST OF DURANGO DR.	30	8LV90 5NEE6	777.263	F N D CITY OF LAS VEGAS RIVET AND ROUND PLATE IN CONCRETE PAD, NORTH SIDE OF ROCKY AVE., NEAR 8500 ROCKY AVE.
18	2C90 16N4 2002	754.329	S E T RIVET AND ROUND ALUMINUM PLATE IN TOP OF CURB, SOUTHWEST CORNER OF GRAND TETON DR. AND CIMARRON RD. NEAR THE PC OF GRAND TETON DR.	31	1LV90 4NNE6	756.907	F N D BLM BRASS CAP '1990' AT MOCCASIN RD. AND CONOUGH LN.
19	2C90 16NNE6 2002	744.924	S E T RIVET AND ROUND ALUMINUM PLATE IN TOP OF CURB, SOUTHWEST CORNER OF GRAND TETON DR. AND PALM GROVE LN. NEAR THE PC OF GRAND TETON DR.	32	1LV90 4NES	754.165	F N D BLM BRASS CAP '1990' AT MOCCASIN RD. AND BUFFALO DR.
20	8LV90 7N4	838.837	F N D CITY OF LAS VEGAS RIVET AND ROUND PLATE IN TOP OF HEADWALL, SOUTHEAST CORNER OF IRON MTN. RD. AND GRAND CANYON DR.	33	8LV90 9NWS	771.947	F N D CITY OF LAS VEGAS RIVET AND ROUND PLATE IN CONCRETE CYLINDER, SOUTHEAST CORNER OF IRON MTN. RD. AND DURANGO DR.
21	0LV90 6NWS	854.890	F N D CITY OF LAS VEGAS RIVET AND ROUND PLATE IN CONCRETE CYLINDER, NORTHEAST CORNER OF MOCCASIN RD. AND HUALAPAI WAY.	34	8LV90 9SWW6	772.909	F N D CITY OF LAS VEGAS RIVET AND ROUND PLATE IN CONCRETE CYLINDER, SOUTHEAST CORNER OF DURANGO DR. AND RACEL ST. 5' WEST OF POWER POLE #U6030.
22	7LV90 6NWW6	858.420	F N D NDOT BRASS DISC W/CLV TAG, WEST SIDE OF EAST FRONTAGE RD. 0.4 MILE SOUTH OF END OF ROAD.	35	1LV90 9NES	744.729	F N D BLM BRASS CAP AT BUFFALO DR. AND IRON MTN. RD.
23	0C90 6W4	859.774	S E T RIVET AND SQUARE ALUMINUM PATE IN TOP OF HEADWALL, SOUTHWEST SIDE OF US 95, 0.45 MILE NORTH OF MILE MARKER 92. ±200' NORTHEAST OF HUALAPAI WAY AND LOG CABIN WAY.	CLARK COUNTY VERTICAL CONTROL v.2003 CLARK COUNTY SURVEYOR'S OFFICE 5051 SOUTH PARADISE ROAD LAS VEGAS, NEVADA 89119 (702) 455-0640			
24	7LV90 6W6	849.101	F N D CITY OF LAS VEGAS RIVET AND ROUND PLATE IN TOP OF HEADWALL, EAST SIDE OF EAST FRONTAGE RD., SOUTHWEST OF LOG CABIN WAY AND CONQUISTADOR ST.				
				CONVERSION FACTOR: METERS X $\left(\frac{3937}{1200}\right)$ = U.S. SURVEY FEET REVISED 04/03/2003			
				SHEET 2 OF 4			
				19-60 NW			

No.	STATION	ELEVATION (METERS)	DESCRIPTION	No.	STATION	ELEVATION (METERS)	DESCRIPTION
36	8LV90 9NEE6	745.325	F N D CITY OF LAS VEGAS RIVET AND ROUND PLATE IN A CONCRETE ELECTRICAL PAD, NORTHWEST CORNER OF COKE ST. AND BRENT LN.	49	1LV90 5N4	790.103	F N D BLM BRASS CAP '1990', MOCCASIN RD. AND EL CAPITAN WAY.
37	8LV90 9E4	742.519	F N D CITY OF LAS VEGAS RIVET AND ROUND PLATE IN CONCRETE CYLINDER, SOUTHWEST CORNER OF HORSE DR. AND COKE ST., NEAR POWER POLE #24335T.	50	8LV90 5N6	791.664	F N D CITY OF LAS VEGAS RIVET AND ROUND PLATE IN CONCRETE CYLINDER, NORTHWEST CORNER OF EL CAPITAN WAY AND ROCKY AVE. NEAR POWER POLE #63133.
38	8LV90 17N4	796.244	F N D CITY OF LAS VEGAS RIVET AND ROUND PLATE IN LVVWD CONCRETE PAD, ±150 SOUTHWEST OF GRAND TETON DR. AND EL CAPITAN WAY.	51	0LV90 5NNW6	799.704	F N D CITY OF LAS VEGAS RIVET AND ROUND PLATE IN CONCRETE CYLINDER, NORTHWEST CORNER OF IRON MTN. RD. AND CONQUISTADOR ST.
39	0LV90 17SEE6	775.174	F N D CITY OF LAS VEGAS RIVET AND ROUND PLATE IN CONCRETE TRANSFORMER PAD, WEST SIDE OF TULE SPRINGS RD. ±700' NORTH OF SUNNY SPRINGS DR.	52	0LV90 5NWS	810.800	F N D BLM BRASS CAP '1956' AT MOCCASIN RD. AND FORT APACHE RD.
40	8LV90 17SES	778.950	F N D CITY OF LAS VEGAS RIVET AND ROUND PLATE IN TOP OF SOUTH END OF HEADWALL, WEST SIDE OF WEST FRONTAGE RD. ±400' NORTH OF ELKHORN RD. 0.15 MILE NORTH OF ENTRANCE TO MTN. RIDGE PARK.	53	8LV90 5S4	791.148	F N D CITY OF LAS VEGAS RIVET AND ROUND PLATE IN CONCRETE CYLINDER, NORTHEAST CORNER OF IRON MTN. RD. AND EL CAPITAN WAY.
41	6LV90 17SSE6	781.713	F N D CITY OF LAS VEGAS RIVET AND ROUND PLATE IN CONCRETE CYLINDER, ±38' NORTH OF ELKHORN RD. CENTERLINE AND HOMESTEAD RD.	54	8LV90 5S6	792.192	F N D CITY OF LAS VEGAS RIVET AND ROUND PLATE IN CONCRETE CYLINDER, NORTHWEST CORNER OF EL CAPITAN WAY AND O'HARE RD.
42	8LV90 17SSW6	802.763	F N D CITY OF LAS VEGAS RIVET AND ROUND PLATE IN CONCRETE CYLINDER, NORTH OF ELKHORN RD. AND CAMPBELL RD.	55	8LV90 5SEE6	773.411	F N D CITY OF LAS VEGAS RIVET AND ROUND PLATE IN CONCRETE CYLINDER, NORTHWEST CORNER OF O'HARE RD. AND DURANGO DR.
43	7LV90 17SWW6	817.886	F N D CITY OF LAS VEGAS RIVET AND ROUND PLATE IN CONCRETE CYLINDER, SOUTHEAST CORNER OF FORT APACHE RD. AND SEVERENCE LN.	56	8LV90 5SSE6	780.943	F N D CITY OF LAS VEGAS RIVET AND ROUND PLATE IN CONCRETE CYLINDER, NORTHEAST CORNER OF IRON MTN. RD. AND HOMESTEAD RD.
44	8LV90 18SWS	868.435	F N D CLARK COUNTY GIS CONTROL POINT #806. ±74' NORTH OF SECTION CORNER AT HUALAPAI WAY AND ELKHORN RD.	57	7LV90 5W6	801.786	F N D CITY OF LAS VEGAS RIVET AND ROUND PLATE IN CONCRETE CYLINDER, NORTHEAST CORNER OF LOG CABIN WAY AND CAMPBELL RD.
45	8LV90 6SSE6	827.166	F N D CITY OF LAS VEGAS RIVET AND ROUND PLATE IN CONCRETE CYLINDER, NORTHWEST CORNER OF IRON MTN. RD. AND TEE PEE LN.	58	8LV90 7SES	817.147	F N D CITY OF LAS VEGAS RIVET AND ROUND PLATE IN CONCRETE CYLINDER, NORTHWEST CORNER OF GRAND TETON DR. AND FORT APACHE RD.
46	1LV90 4W4	775.469	F N D 3" BRASS CAP, RLS 3573 IN CONCRETE, LOG CABIN WAY AND DURANGO DR.	59	8LV90 8C4	791.277	F N D CITY OF LAS VEGAS RIVET AND ROUND PLATE IN TOP OF CURB, SOUTHEAST CORNER OF HORSE DR. AND EL CAPITAN WAY.
47	8LV90 5C4	791.083	F N D CITY OF LAS VEGAS RIVET AND ROUND PLATE IN CONCRETE PAD, NORTHEAST CORNER OF LOG CABIN WAY AND EL CAPITAN WAY, ±185' NORTH OF LOG CABIN WAY.	CLARK COUNTY VERTICAL CONTROL v.2003 CLARK COUNTY SURVEYOR'S OFFICE 5051 SOUTH PARADISE ROAD LAS VEGAS, NEVADA 89119 (702) 455-0640			
48	7LV90 5E6	781.789	F N D CITY OF LAS VEGAS RIVET AND ROUND PLATE IN CONCRETE CYLINDER, NORTHWEST CORNER OF LOG CABIN WAY AND HOMESTEAD RD. 2' EAST OF POWER POLE #T19816.				
				CONVERSION FACTOR: METERS X $\left(\frac{3937}{1200}\right)$ = U.S. SURVEY FEET REVISED 04/03/2003			
				SHEET 3 OF 4 19-60 NW			

No.	STATION	ELEVATION (METERS)	DESCRIPTION	No.	STATION	ELEVATION (METERS)	DESCRIPTION
60	8LV90 8S6	792.531	F N D CITY OF LAS VEGAS RIVET AND ROUND PLATE IN TOP OF CURB, NORTHWEST CORNER OF EL CAPITAN WAY AND RACEL ST.	73	8LV90 16E4	736.569	F N D CITY OF LAS VEGAS RIVET AND ROUND PLATE IN TOP OF CURB, NORTHWEST CORNER OF BUFFALO DR. AND FARM RD. NEAR PT OF BUFFALO DR.
61	0LV90 8SEE6	773.589	F N D CITY OF LAS VEGAS RIVET AND ROUND PLATE IN TOP OF CURB, NORTHWEST CORNER OF DURANGO DR. AND RACEL ST.	74			
62	8LV90 9NWW6	771.361	F N D CITY OF LAS VEGAS RIVET AND ROUND PLATE IN CONCRETE CYLINDER, NORTHEAST CORNER OF DURANGO DR. AND BRENT LN.	75			
63	8LV90 16NEE6	736.756	F N D CITY OF LAS VEGAS RIVET AND ROUND PLATE IN TOP OF CURB, SOUTHWEST CORNER OF BUFFALO DR. AND CERTITUDE AVE.	76			
64	8LV90 16W4	774.747	F N D 2 1/2" BRASS CAP, PLS 7008 IN CONCRETE, FARM RD. AND TULE SPRINGS RD.	77			
65	8LV90 17S4	791.619	F N D CITY OF LAS VEGAS RIVET AND ROUND PLATE IN CONCRETE CYLINDER, NORTHEAST CORNER OF ELKHORN RD. AND EL CAPITAN WAY.	78			
66	9LV90 18C4	845.788	F N D CITY OF LAS VEGAS RIVET AND ROUND PLATE IN CONCRETE CYLINDER, SOUTHWEST CORNER OF FARM RD. AND GRAND CANYON DR.	79			
67	8LV90 18N4	842.612	F N D CITY OF LAS VEGAS RIVET AND ROUND PLATE IN CONCRETE CYLINDER, SOUTHEAST CORNER OF GRAND TETON DR. AND GRAND CANYON DR.	80			
68	8LV90 18S4	840.780	F N D CITY OF LAS VEGAS RIVET AND ROUND PLATE IN CONCRETE CYLINDER, NORTHEAST CORNER OF ELKHORN RD. AND GRAND CANYON DR.	81			
69	8LV90 18SES	815.421	F N D CITY OF LAS VEGAS RIVET AND ROUND PLATE IN CONCRETE CYLINDER, NORTHWEST CORNER OF ELKHORN RD. AND FORT APACHE RD.	82			
70	9LV90 18W6	858.631	F N D CITY OF LAS VEGAS RIVET AND ROUND PLATE IN CONCRETE CYLINDER, SOUTHWEST CORNER FARM RD. AND CONQUISTADOR ST.	83			
71	8LV90 16C4	754.210	F N D CITY OF LAS VEGAS RIVET AND ROUND PLATE IN TOP OF CURB, SOUTHWEST CORNER OF FARM RD. AND CIMARRON RD. NEAR PT OF CIMARRON RD.	CLARK COUNTY VERTICAL CONTROL v.2003 CLARK COUNTY SURVEYOR'S OFFICE 5051 SOUTH PARADISE ROAD LAS VEGAS, NEVADA 89119 (702) 455-0640			
72	9LV90 16E6	744.944	F N D CITY OF LAS VEGAS RIVET AND ROUND PLATE IN TOP OF CURB, NORTHEAST CORNER OF FARM RD. AND PALM GROVE LN. NEAR PT OF FARM RD.				
				CONVERSION FACTOR: METERS X $\left(\frac{3937}{1200}\right)$ = U.S. SURVEY FEET REVISED 04/03/2003			
				SHEET 4 OF 4 19-60 NW			

Township 19 South, Range 60 East Southeast Quarter

ELKHORN RD.



NORTH AMERICAN VERTICAL
DATUM OF 1988
— ALL ELEVATIONS IN METERS —

No.	STATION	ELEVATION (METERS)	DESCRIPTION
1			LOST 2003
2	0C90 34E4	708.404	F N D RIVET AND SQUARE ALUMINUM PLATE IN CONCRETE BASE OF ELECTRIC METER PEDESTAL AT EAST R/W FENCE OF RANCHO DR. AND 0.25 MILES NORTH ON RAINBOW BLVD. NEAR POWER POLE # P85026
3			LOST 2003
4			LOST 2003
5			LOST 2003
6			LOST 2003
7			LOST 2003
8	8LV90 34SEE6	708.140	F N D CITY OF LAS VEGAS RIVET AND ROUND PLATE IN TOP OF CURB, NORTHWEST CORNER OF RANCHO DR. AND SANTA FE, IN FRONT OF SANTA FE STATION HOTEL.
9	0LV90 35S4	701.398	F N D CITY OF LAS VEGAS RIVET AND ROUND PLATE IN TOP OF CURB, NORTHWEST CORNER OF TORREY PINES DR. AND LONE MTN. RD. NEAR THE PT OF TORREY PINES DR.
10	5LV90 34E4	707.747	F N D CITY OF LAS VEGAS RIVET AND ROUND PLATE IN TOP OF CURB, NORTHWEST CORNER OF RAINBOW BLVD. AND WELCOME LN. NEAR THE PT OF RAINBOW BLVD.
11	6LV90 22C4	718.750	F N D CITY OF LAS VEGAS RIVET AND ROUND PLATE IN CONCRETE PAD, NEAR 6735 TENAYA WAY. ±100' NORTH OF BATH DR.

CLARK COUNTY VERTICAL CONTROL v.2003

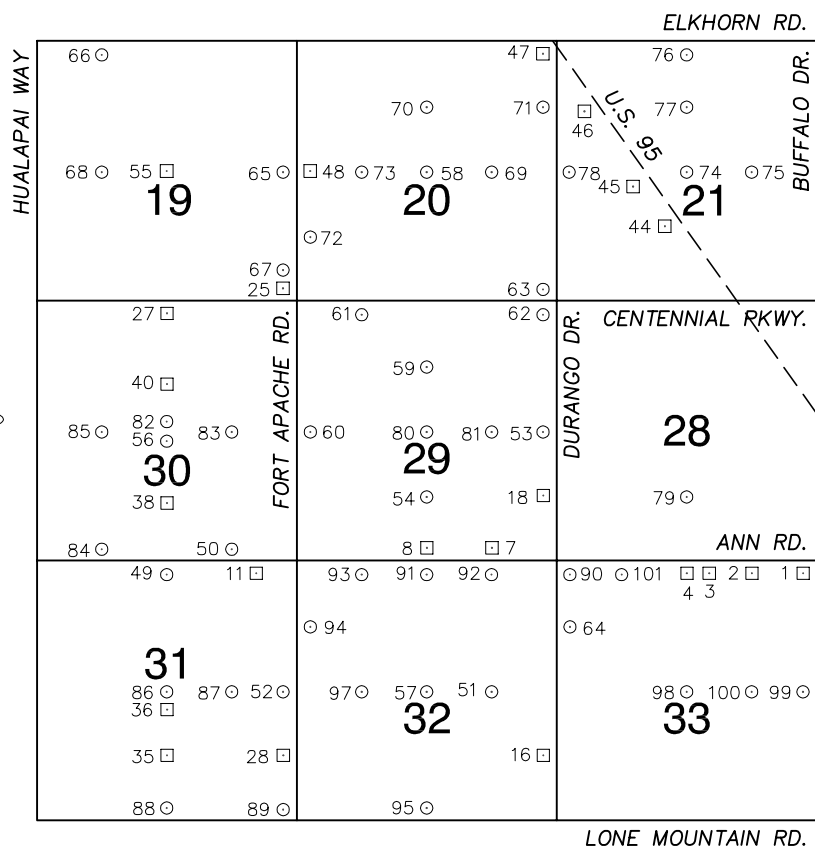
CLARK COUNTY SURVEYOR'S OFFICE
5051 SOUTH PARADISE ROAD
LAS VEGAS, NEVADA 89119
(702) 455-0640

CONVERSION FACTOR:
METERS X $\left(\frac{3937}{1200}\right)$ = U.S. SURVEY FEET
REVISED 2003 SHEET 1 OF 4 19-60 SE

No.	STATION	ELEVATION (METERS)	DESCRIPTION		No.	STATION	ELEVATION (METERS)	DESCRIPTION			
12	6LV90 22S6	717.777	F N D	CITY OF LAS VEGAS RIVET AND ROUND PLATE IN CONCRETE MAILBOX PAD, SOUTHEAST CORNER OF TENAYA WAY AND ROME BLVD.	25	8LV90 23W6	712.354	F N D	CITY OF LAS VEGAS RIVET AND ROUND PLATE IN CONCRETE CYLINDER, NORTHEAST CORNER OF DEER SPRINGS WAY AND REBECCA RD. ±2' SOUTH OF METAL FENCE POST.		
13	8LV90 22SES	711.602	F N D	CITY OF LAS VEGAS RIVET AND ROUND PLATE IN CONCRETE CYLINDER, ±55' NORTHWEST OF CENTENNIAL PKWY. AND RAINBOW BLVD. NEAR BLOCK WALL.	26	8LV90 24W6	706.695	F N D	CITY OF LAS VEGAS RIVET AND ROUND PLATE IN CONCRETE CYLINDER, NORTHEAST CORNER OF DEER SPRINGS WAY AND LEON AVE. ±2' NORTHEAST OF TELEPHONE POLE #19620T.		
14	8LV90 22SSE6	714.721	F N D	CITY OF LAS VEGAS RIVET AND ROUND PLATE IN CONCRETE CYLINDER, NORTHWEST CORNER OF CENTENNIAL PKWY. AND RIO VISTA ST. NEAR PC OF RIO VISTA ST.	27	8LV90 25C4	699.520	F N D	CITY OF LAS VEGAS RIVET AND ROUND PLATE IN TOP OF CURB, NORTHEAST CORNER OF TROPICAL PKWY. AND BRADLEY RD. NEAR THE PC OF TROPICAL PKWY.		
15	8LV90 22SWW6	729.946	F N D	3" BRASS CAP IN CONCRETE, ±180' NORTHEAST OF BUFFALO DR. AND ROME BLVD.	28	0LV90 25N6	700.832	F N D	CITY OF LAS VEGAS RIVET AND ROUND PLATE IN TOP OF CURB, SOUTHWEST CORNER OF BRADLEY RD. AND AZURE AVE. NEAR THE PT OF BRADLEY RD.		
16	8LV90 22W4	728.510	F N D	CITY OF LAS VEGAS RIVET AND ROUND PLATE IN TOP OF CURB, NORTHEAST CORNER OF BUFFALO DR. AND DEER SPRINGS WAY, NEAR PC OF DEER SPRINGS WAY.	29	0LV90 25NW6	702.574	F N D	CITY OF LAS VEGAS RIVET AND ROUND PLATE IN TOP OF CURB, SOUTH SIDE OF AZURE AVE. AND LEON AVE.		
17	8LV90 22W6	723.905	F N D	CITY OF LAS VEGAS RIVET AND ROUND PLATE IN CONCRETE PAD, ±150' SOUTH OF DEER SPRINGS WAY AND PIONEER WAY.	30	5LV90 25S6	698.772	F N D	CITY OF LAS VEGAS RIVET AND ROUND PLATE IN TOP OF CURB, SOUTHWEST CORNER OF BRADLEY RD. AND EL CAMPO GRANDE AVE. NEAR THE PT BRADLEY RD.		
18	5LV90 23C4	711.033	F N D	CITY OF LAS VEGAS RIVET AND ROUND PLATE IN CONCRETE CYLINDER, NORTHWEST CORNER OF DEER SPRINGS WAY AND TORREY PINES DR.	31	0LV90 25SW6	699.490	F N D	CITY OF LAS VEGAS RIVET AND ROUND PLATE IN TOP OF CURB, ±230' EAST OF THE ALIGNMENT OF EL CAMPO GRANDE AVE. AND CALVERTS ST.		
19	5LV90 23E4	707.741	F N D	CITY OF LAS VEGAS RIVET AND ROUND PLATE IN CONCRETE MAILBOX PAD, SOUTHWEST CORNER OF DEER SPRINGS WAY AND JONES BLVD.	32	0LV90 25W4	702.649	F N D	CITY OF LAS VEGAS RIVET AND ROUND PLATE IN TOP OF CURB, NORTHEAST CORNER OF TROPICAL PKWY. AND JONES BLVD. NEAR THE PC OF TROPICAL PKWY.		
20	8LV90 23S4	707.947	F N D	CITY OF LAS VEGAS RIVET AND ROUND PLATE IN CONCRETE CYLINDER, NORTHEAST CORNER OF CENTENNIAL PKWY. AND TORREY PINES DR.	33	8LV90 25W6	701.376	F N D	CITY OF LAS VEGAS RIVET AND ROUND PLATE IN TOP OF CURB ON THE SOUTH SIDE OF TROPICAL PKWY. AT THE PROJECTED ALIGNMENT OF LEON AVE.		
21	0LV90 23S6	708.755	F N D	CITY OF LAS VEGAS RIVET AND ROUND PLATE IN CONCRETE CYLINDER, TORREY PINES DR. AND ROME BLVD. ALIGNMENT.	34	5LV90 26C4	705.767	F N D	CITY OF LAS VEGAS RIVET AND ROUND PLATE IN CONCRETE PAD, SOUTH SIDE OF TROPICAL PKWY., ±170' WEST OF TORREY PINES DR.		
22	8LV90 23SSW6	709.781	F N D	CITY OF LAS VEGAS RIVET AND ROUND PLATE IN CONCRETE CYLINDER, NORTHWEST CORNER OF CENTENNIAL PKWY. AND REBECCA RD.	35	8LV90 26E6	703.934	F N D	CITY OF LAS VEGAS RIVET AND ROUND PLATE IN CONCRETE PAD, NORTHWEST CORNER OF TROPICAL PKWY. AND MAVERICK ST. JUST EAST OF 6280 TROPICAL PKWY.		
23	8LV90 23SW6	711.304	F N D	CITY OF LAS VEGAS RIVET AND ROUND PLATE IN CONCRETE CYLINDER, SOUTHWEST CORNER OF REBECCA RD. AND ROME BLVD. NEAR 1/2 DELTA.	CLARK COUNTY VERTICAL CONTROL v.2003 CLARK COUNTY SURVEYOR'S OFFICE 5051 SOUTH PARADISE ROAD LAS VEGAS, NEVADA 89119 (702) 455-0640						
24	8LV90 23SWW6	713.240	F N D	CITY OF LAS VEGAS RIVET AND ROUND PLATE IN CONCRETE CYLINDER, NORTHEAST CORNER OF RAINBOW BLVD. AND ROME BLVD. NEAR 1/2 DELTA.							
					CONVERSION FACTOR: METERS X $\left(\frac{3937}{1200}\right)$ = U.S. SURVEY FEET						
					REVISED 2003			SHEET 2 OF 4		19-60 SE	

No.	STATION	ELEVATION (METERS)	DESCRIPTION		No.	STATION	ELEVATION (METERS)	DESCRIPTION				
36	0LV90 26N6	706.674	F N D	CITY OF LAS VEGAS RIVET AND ROUND PLATE IN TOP OF CURB, NORTHWEST CORNER OF TORREY PINES DR. AND AZURE AVE. NEAR THE PC OF TORREY PINES DR.	49	5LV90 34C4	714.125	F N D	CITY OF LAS VEGAS RIVET AND ROUND PLATE IN TOP OF CURB, EAST SIDE OF TENAYA WAY AT WASHBURN RD. ON POINT OF CURVATURE.			
37	0LV90 26NEE6	704.389	F N D	CITY OF LAS VEGAS RIVET AND ROUND PLATE IN CONCRETE PAD, NORTHWEST CORNER OF JONES BLVD. AND AZURE AVE.	50	8LV90 34N4	716.042	F N D	NORTH BOLT OF STREET LIGHT IN MEDIAN OF U.S. 95, ±600' SOUTH OF ANN RD.			
38	5LV90 26S6	704.808	F N D	CITY OF LAS VEGAS RIVET AND ROUND PLATE IN CONCRETE CYLINDER, NORTHWEST CORNER OF TORREY PINES DR. AND EL CAMPO GRANDE AVE.	51	8LV90 34NEE6	707.807	F N D	CITY OF LAS VEGAS RIVET AND ROUND PLATE IN TOP OF CURB, WEST SIDE OF RAINBOW BLVD. ±20' SOUTH OF THE HAMMER LN. ALIGNMENT.			
39	8LV90 26SSW6	706.339	F N D	CITY OF LAS VEGAS RIVET AND ROUND PLATE IN CONCRETE PAD, NORTHEAST CORNER OF ANN RD. AND REBECCA RD. ±110' NORTH OF REBECCA RD.	52	8LV90 34NES	708.826	F N D	CITY OF LAS VEGAS RIVET AND ROUND PLATE IN TOP OF CURB, SOUTHWEST CORNER OF ANN RD. AND RAINBOW BLVD. NEAR THE PT OF RAINBOW BLVD.			
40	8LV90 26W6	707.521	F N D	CITY OF LAS VEGAS RIVET AND ROUND PLATE IN CONCRETE CYLINDER, NORTHEAST CORNER OF TROPICAL PKWY. AND REBECCA RD. 1' NORTH OF TEL. POLE #X3777.	53	8LV90 34NNE6	713.842	F N D	CITY OF LAS VEGAS RIVET AND ROUND PLATE IN TOP OF CURB, SOUTHEAST CORNER OF ANN RD. AND RIO VISTA ST. NEAR THE PT OF ANN RD.			
41	8LV90 27E4	710.544	F N D	CITY OF LAS VEGAS RIVET AND ROUND PLATE IN TOP CURB, NORTHWEST CORNER OF TROPICAL PKWY. AND RAINBOW BLVD. NEAR THE PT OF TROPICAL PKWY.	54	1LV90 34S4	709.710	F N D	CITY OF LAS VEGAS RIVET AND ROUND PLATE IN TOP OF CURB, NORTHEAST CORNER OF LONE MTN. RD. AND TENAYA WAY, NEAR 1/2 DELTA.			
42	8LV90 27E6	713.249	F N D	CITY OF LAS VEGAS RIVET AND ROUND PLATE IN TOP OF CURB, NORTHEAST CORNER OF TROPICAL PKWY. AND RIO VISTA ST.	55	8LV90 34SWW6	719.342	F N D	CITY OF LAS VEGAS RIVET AND ROUND PLATE IN CONCRETE PAD, NORTHEAST CORNER OF BUFFALO DR. AND LA MADRE WAY.			
43	1LV90 27N4	718.152	F N D	1 1/2" ALUMINUM CAP AT INTERSECTION OF CENTENNIAL PKWY. AND TENAYA WAY. PLS 6050.	56	5LV90 35C4	703.585	F N D	CITY OF LAS VEGAS RIVET AND ROUND PLATE IN TOP OF CURB, NORTHEAST CORNER OF WASHBURN RD. AND TORREY PINES DR. NEAR THE PT OF TORREY PINES DR.			
44	5LV90 27NEE6	711.026	F N D	CITY OF LAS VEGAS RIVET AND ROUND PLATE IN TOP OF CURB, SOUTHWEST CORNER OF RAINBOW BLVD. AND AZURE AVE. NEAR THE PC OF AZURE AVE.	57	8LV90 35E6	700.768	F N D	CITY OF LAS VEGAS RIVET AND ROUND PLATE IN TOP OF CURB, SOUTHWEST CORNER OF WASHBURN RD. AND MAVERICK ST. NEAR THE PT OF MAVERICK ST.			
45	8LV90 27NW6	721.542	F N D	CITY OF LAS VEGAS RIVET AND ROUND PLATE IN TOP OF CURB, ±100' NORTH OF THE NORTHEAST CORNER OF EXOTIC BLOOM DR. AND YOUNG DOE AVE.	58	5LV90 35N6	703.070	F N D	CITY OF LAS VEGAS RIVET AND ROUND PLATE IN TOP OF CURB, NORTHEAST CORNER OF TORREY PINES DR. AND HAMMER LN. NEAR THE PT OF TORREY PINES DR.			
46	8LV90 27NWW6	727.175	F N D	CITY OF LAS VEGAS RIVET AND ROUND PLATE IN TOP OF CURB, FAR WEST END OF DURHAM AVE.	59	8LV90 35NNE6	702.108	F N D	CITY OF LAS VEGAS RIVET AND ROUND PLATE IN TOP OF CURB, SOUTHEAST CORNER OF ANN RD. AND MAVERICK ST. NEAR THE PT OF MAVERICK ST.			
47	0LV90 27SEE6	709.061	F N D	CITY OF LAS VEGAS RIVET AND ROUND PLATE IN TOP OF CURB, WEST SIDE OF RAINBOW BLVD. ±200' NORTH OF EL CAMPO GRANDE AVE.	CLARK COUNTY VERTICAL CONTROL v.2003 CLARK COUNTY SURVEYOR'S OFFICE 5051 SOUTH PARADISE ROAD LAS VEGAS, NEVADA 89119 (702) 455-0640							
48	0LV90 34E6	708.791	F N D	CITY OF LAS VEGAS RIVET AND ROUND PLATE IN TOP OF CURB, SOUTHWEST CORNER OF RANCHO SANTA FE DR. AND STANDING ROCK PL.								
					CONVERSION FACTOR: METERS X $\left(\frac{3937}{1200}\right)$ = U.S. SURVEY FEET							
					REVISED 2003		SHEET 3 OF 4		19-60 SE			

No.	STATION	ELEVATION (METERS)	DESCRIPTION	No.	STATION	ELEVATION (METERS)	DESCRIPTION
60	5LV90 35S6	702.199	F N D CITY OF LAS VEGAS RIVET AND ROUND PLATE IN TOP OF CURB, NORTHEAST CORNER OF TORREY PINES DR. AND LONE MTN. RD. NEAR THE PT OF TORREY PINES DR.	73			
61	8LV90 35W6	705.873	F N D CITY OF LAS VEGAS RIVET AND ROUND PLATE IN TOP OF CURB, SOUTHEAST CORNER OF REBECCA RD. AND RANCHO SANTA FE DR. NEAR PT OF RANCHO SANTA FE DR.	74			
62	1LV90 36NNW6	698.557	F N D CITY OF LAS VEGAS RIVET AND SQUARE PLATE IN TOP OF CURB, SOUTHWEST CORNER OF ANN RD. AND CALVERTS ST. SOUTH SIDE OF ANN RD.	75			
63	5LV90 36NWS	700.314	F N D CITY OF LAS VEGAS RIVET AND ROUND PLATE IN TOP OF CURB, SOUTHEAST CORNER OF ANN RD. AND JONES BLVD. NEAR THE PC OF JONES BLVD.	76			
64	8LV90 36SW6	691.526	F N D CITY OF LAS VEGAS RIVET AND ROUND PLATE IN TOP OF CURB, EAST SIDE OF LEON AVE. ±20' NORTH AND OPPOSITE OF LA MADRE WAY.	77			
65	1LV90 36W4	696.749	F N D CITY OF LAS VEGAS RIVET AND ROUND PLATE IN TOP OF CURB, NORTHEAST CORNER OF WASHBURN RD. AND JONES BLVD. NEAR 1/2 DELTA.	78			
66	8LV90 36W6	693.208	F N D CITY OF LAS VEGAS RIVET AND ROUND PLATE IN TOP OF CURB, NORTHEAST CORNER OF WASHBURN RD. AND LEON AVE.	79			
67				80			
68				81			
69				82			
70				83			
71				CLARK COUNTY VERTICAL CONTROL v.2003 CLARK COUNTY SURVEYOR'S OFFICE 5051 SOUTH PARADISE ROAD LAS VEGAS, NEVADA 89119 (702) 455-0640			
72							
				CONVERSION FACTOR: METERS X $\left(\frac{3937}{1200}\right)$ = U.S. SURVEY FEET REVISED 2003 SHEET 4 OF 4 19-60 SE			



NORTH AMERICAN VERTICAL
DATUM OF 1988
— ALL ELEVATIONS IN METERS —

No.	STATION	ELEVATION (METERS)	DESCRIPTION	
1	1LV90 33NES	722.984	F N D	CITY OF LAS VEGAS PIN AND PLATE IN TOP OF CURB, SOUTH CURB LINE NEAR ANN RD. AND BUFFALO DR.
2	1LV90 33NNE6A	725.944	F N D	CITY OF LAS VEGAS PIN AND PLATE IN TOP OF CURB, SOUTHWEST CORNER OF ANN RD. AND PAINTED SUNRISE DR.
3	1LV90 33NNE6	727.961	F N D	CITY OF LAS VEGAS PIN AND PLATE IN TOP OF CURB, SOUTH CURB LINE OF ANN RD., ACROSS THE STREET FROM "BOGEY'S RESTAURANT."
4	1LV90 33N4	733.064	F N D	CITY OF LAS VEGAS PIN AND PLATE IN TOP OF CURB, SOUTHEAST CORNER OF ANN RD. AND CIMARRON RD. NEAR 1/2 DELTA.
5				LOST 2003
6				LOST 2003
7	1C90 29SSE6	755.144	F N D	RIVET AND SQUARE ALUMINUM PLATE IN THE SOUTH SIDE OF A ELECTRICAL PULL BOX, 143' EAST OF RILEY ST. ON THE NORTH SIDE OF ANN RD.
8	1C90 29S4	763.772	F N D	RIVET AND SQUARE ALUMINUM PLATE IN WEST TOP OF "A" TYPE CURB ON CUL-DE-SAC, 190' EAST OF EL CAPITAN WAY ON THE NORTH SIDE OF ANN RD.
9				LOST 2003
10				LOST 2003
11	1C90 31NNE6	794.538	F N D	RIVET AND SQUARE ALUMINUM PLATE IN AN ELECTRICAL TRANSFORMER PAD (9443 ANN RD.) ON THE SOUTH SIDE OF ANN RD., 200' WEST OF TEE PEE LN.
CLARK COUNTY VERTICAL CONTROL v.2003				
CLARK COUNTY SURVEYOR'S OFFICE 5051 SOUTH PARADISE ROAD LAS VEGAS, NEVADA 89119 (702) 455-0640			CONVERSION FACTOR: METERS X $\left(\frac{3937}{1200}\right)$ = U.S. SURVEY FEET	
			REVISED 09/01/2006	SHEET 1 of 5 19-60 SW

No.	STATION	ELEVATION (METERS)	DESCRIPTION	No.	STATION	ELEVATION (METERS)	DESCRIPTION
12			LOST 2003	25	1C90 19SES	798.258	F N D RIVET AND SQUARE ALUMINUM PLATE IN A CONCRETE MONUMENT, 50' NORTH AND 40' WEST OF CENTENNIAL PKWY. AND FORT APACHE RD.
13			LOST 2003	26			LOST 2003
14			LOST 2003	27	1C90 30N4	819.470	F N D RIVET AND SQUARE ALUMINUM PLATE IN THE SOUTHEAST CORNER OF A ELECTRICAL CABINET BASE (#DD720), 200' SOUTH AND 40' WEST OF CENTENNIAL PKWY. AND GRAND CANYON DR.
15			LOST 2003	28	1C90 31SEE6	770.283	F N D RIVET AND SQUARE ALUMINUM PLATE IN EAST SIDE OF A CONCRETE ELECTRICAL PULLBOX BASE (#NN-563), AT 5025 APACHE RD., IN THE NORTHWEST CORNER OF FORT APACHE RD. AND LA MADRE WAY.
16	1C90 32SEE6	738.082	F N D RIVET AND SQUARE ALUMINUM PLATE IN A CONCRETE MONUMENT 4' NORTH OF POWER POLE (#68746NP), 60' NORTH AND 50' WEST OF DURANGO DR. AND LA MADRE WAY.	29			LOST 2003
17			LOST 2006	30			LOST 1992
18	1C90 29SEE6	750.626	F N D RIVET AND SQUARE ALUMINUM PLATE IN A CONCRETE MONUMENT, 50' SOUTH AND 50' WEST OF DURANGO DR. AND EL CAMPO GRANDE AVE.	31			LOST 2003
19			LOST 2003	32			LOST 2003
20			LOST 2003	33			LOST 2003
21			LOST 2003	34			LOST 2003
22			LOST 2003	35	1C90 31S6	791.203	F N D RIVET AND SQUARE ALUMINUM PLATE IN A CONCRETE MONUMENT, 130' NORTH AND 70' EAST OF GRAND CANYON DR. AND LA MADRE WAY, 5' WEST OF A 3.5' DIAMETER HIGH VOLTAGE POWER TRANSMISSION LINE.
23			LOST 2003	CLARK COUNTY VERTICAL CONTROL v.2003 CLARK COUNTY SURVEYOR'S OFFICE 5051 SOUTH PARADISE ROAD LAS VEGAS, NEVADA 89119 (702) 455-0640			
24			LOST 2003				
				CONVERSION FACTOR: METERS X $\left(\frac{3937}{1200}\right)$ = U.S. SURVEY FEET			
				REVISED 09/01/2006		SHEET 2 OF 5	19-60 SW

No.	STATION	ELEVATION (METERS)	DESCRIPTION	No.	STATION	ELEVATION (METERS)	DESCRIPTION
36	1C90 31C4	794.785	F N D RIVET AND SQUARE ALUMINUM PLATE IN A 4' X 4' CONCRETE ELECTRICAL PAD (#AA314), 45' SOUTH AND 100' EAST OF GRAND CANYON DR. AND WASHBURN RD.	49	8LV90 31N4	804.360	F N D CITY OF LAS VEGAS PIN AND ROUND PLATE IN CONCRETE PAD, SOUTHWEST CORNER OF ANN RD. AND GRAND CANYON DR. ±100' SOUTH OF ANN RD.
37			LOST 2003	50	8LV90 30SSE6	793.987	F N D CITY OF LAS VEGAS PIN AND ROUND PLATE IN CONCRETE PAD, NORTHEAST CORNER OF ANN RD. AND TEE PEE LN. ±75' WEST OF TEE PEE LN.
38	1C90 30S6	809.346	F N D RIVET AND SQUARE ALUMINUM PLATE IN A 4' X 4' CONCRETE ELEC. PAD AT 9620 EL CAMPO GRANDE AVE. 30' NORTH AND 170' WEST OF GRAND CANYON DR. AND EL CAMPO GRANDE AVE.	51	9LV90 32E6	748.727	F N D CITY OF LAS VEGAS PIN AND ROUND PLATE IN CONCRETE CYLINDER, SOUTHWEST CORNER OF WASHBURN RD. AND RILEY ST. NEAR 1/2 DELTA.
39			LOST 2003	52	9LV90 31E4	775.062	F N D CITY OF LAS VEGAS PIN AND ROUND PLATE IN CONCRETE PAD, IN CUL-DE-SAC, ±300' SOUTHWEST OF WASHBURN RD. AND FORT APACHE RD.
40	1C90 30N6	813.646	F N D RIVET AND SQUARE ALUMINUM PLATE IN A 4' X 4' CONCRETE ELECTRICAL PAD (#YY-756) 330' SOUTH OF AZURE AVE. EAST SIDE OF GRAND CANYON DR. AT 6160 GRAND CANYON DR.	53	8LV90 29E4	752.681	F N D CITY OF LAS VEGAS PIN AND ROUND PLATE IN CONCRETE PAD, NORTHWEST CORNER OF TROPICAL PKWY. AND DURANGO DR.
41			LOST 2003	54	8LV90 29S6	768.668	F N D CITY OF LAS VEGAS PIN AND ROUND PLATE IN CONCRETE CYLINDER, NORTHWEST CORNER OF EL CAPITAN WAY AND EL CAMPO GRANDE AVE.
42			LOST 2003	55	8LV90 19C4	832.782	F N D CITY OF LAS VEGAS PIN AND ROUND PLATE IN CONCRETE PAD, ±200' NORTHWEST OF DEER SPRINGS WAY AND GRAND CANYON DR.
43			LOST 2003	56	1C90 30C4	811.228	F N D RIVET AND SQUARE ALUMINUM PLATE IN CONCRETE MONUMENT, SOUTHWEST CORNER OF TROPICAL PKWY. AND GRAND CANYON DR.
44	0C90 21S6	745.634	F N D RIVET AND SQUARE ALUMINUM PLATE IN TOP CENTER OF HEADWALL ON THE WEST SIDE OF HWY. 95 NEAR MILE MARKER 88.40.	57	8LV90 32C4	756.269	F N D CITY OF LAS VEGAS PIN AND ROUND PLATE IN CONCRETE PAD, NORTHWEST CORNER OF WASHBURN RD. AND EL CAPITAN WAY, NEAR 1/2 DELTA.
45	0C90 21W6	756.408	F N D RIVET AND SQUARE ALUMINUM PLATE IN TOP CENTER OF HEADWALL ON THE WEST SIDE OF HWY. 95 NEAR MILE MARKER 88.70.	58	8LV90 20C4	784.063	F N D CITY OF LAS VEGAS RIVET AND ROUND ALUMINUM PLATE IN A CONCRETE MONUMENT, SOUTHEAST CORNER OF EL CAPITAN WAY AND DEER SPRINGS WAY.
46	0C90 21NW6	764.757	F N D RIVET AND SQUARE ALUMINUM PLATE IN TOP CENTER OF HEADWALL ON THE WEST SIDE OF HWY. 95 NEAR MILE MARKER 88.95.	59	8LV90 29N6	772.450	F N D CITY OF LAS VEGAS RIVET AND ROUND ALUMINUM PLATE IN EAST EDGE OF MAIL BOX CONCRETE PAD, NORTHEAST CORNER OF W. AZURE AVE. AND EL CAPITAN WAY.
47	0C90 20NES	772.907	F N D RIVET AND SQUARE ALUMINUM PLATE IN TOP CENTER OF HEADWALL ON WEST SIDE OF HWY. 95 NEAR MILE MARKER 89.25.	CLARK COUNTY VERTICAL CONTROL v.2003 CLARK COUNTY SURVEYOR'S OFFICE 5051 SOUTH PARADISE ROAD LAS VEGAS, NEVADA 89119 (702) 455-0640			
48	2C90 20W4	806.868	F N D SQUARE ALUMINUM PLATE WIRED ON A REBAR 100' NORTHEAST OF FORT APACHE RD. AND DEER SPRINGS WAY.				
				CONVERSION FACTOR: METERS X $\left(\frac{3937}{1200}\right)$ = U.S. SURVEY FEET REVISED 2003 SHEET 3 OF 5 19-60 SW			

No.	STATION	ELEVATION (METERS)	DESCRIPTION	No.	STATION	ELEVATION (METERS)	DESCRIPTION
60	8LV90 29W4	789.684	F N D CITY OF LAS VEGAS PIN AND ROUND PLATE IN CONCRETE PAD, SOUTHEAST CORNER OF TROPICAL PKWY. AND FORT APACHE RD. ±50' EAST OF FORT APACHE RD.	73	8LV90 20W6	796.784	F N D CITY OF LAS VEGAS RIVET AND ROUND PLATE IN CONCRETE PAD, ±118' SOUTHWEST OF DEER SPRINGS WAY AND CAMPBELL RD.
61	8LV90 29NNW6	785.825	F N D CITY OF LAS VEGAS PIN AND ROUND PLATE IN CONCRETE WALL FOOTING, SOUTHEAST CORNER OF CENTENNIAL PKWY. AND CAMPBELL RD.	74	8LV90 21C4	747.010	F N D CITY OF LAS VEGAS RIVET AND ROUND PLATE IN TOP OF CURB, NORTHEAST CORNER OF DEER SPRINGS WAY AND CIMARRON RD.
62	2C90 29NES 2002	758.585	F N D RIVET AND ROUND ALUMINUM PLATE ON A CONCRETE ELECTRIC TRANSFORMER PAD, SOUTHWEST CORNER OF DURANGO DR. AND CENTENNIAL PWKY.	75	8LV90 21E6	739.817	F N D CITY OF LAS VEGAS RIVET AND ROUND PLATE IN TOP OF CURB, 1/4 MILE WEST OF BUFFALO DR., ON THE NORTH SIDE OF DEER SPRINGS WAY NEAR 7855 DEER SPRINGS WAY.
63	0LV90 20SES	759.033	F N D CITY OF LAS VEGAS RIVET AND PLATE IN LVVWD CONCRETE PAD, NORTHWEST CORNER OF CENTENNIAL PKWY. AND DURANGO DR.	76	8LV90 21N4	749.244	F N D CITY OF LAS VEGAS RIVET AND ROUND PLATE IN TOP OF CURB, SOUTHEAST CORNER OF ELKHORN RD. AND CIMARRON RD.
64	1LV90 33NNW6	743.557	F N D CITY OF LAS VEGAS RIVET AND ROUND PLATE IN CONCRETE PAD, ±125' EAST OF DURANGO DR. NEAR 8351 HAMMER LN.	77	8LV90 21N6	750.627	F N D CITY OF LAS VEGAS RIVET AND ROUND PLATE IN TOP OF CURB, NORTHEAST CORNER OF CIMARRON RD. AND SIERRA RIM DR. NEAR PT OF CIMARRON RD.
65	8LV90 19E4	807.891	F N D CITY OF LAS VEGAS RIVET AND ROUND PLATE IN CONCRETE CYLINDER, NORTHWEST CORNER OF DEER SPRINGS WAY AND GRAND CANYON WAY.	78	8LV90 21W4	764.635	F N D CITY OF LAS VEGAS RIVET AND ROUND PLATE IN TOP OF CURB, SOUTHEAST CORNER OF DEER SPRINGS WAY AND DURANGO DR.
66	8LV90 19NNW6	854.591	F N D CITY OF LAS VEGAS RIVET AND ROUND PLATE IN CONCRETE CYLINDER, SOUTHEAST CORNER OF ELKHORN RD. AND CONQUISTADOR ST.	79	8LV90 28S6	735.672	F N D CITY OF LAS VEGAS RIVET AND ROUND PLATE IN TOP OF CURB, NORTHEAST CORNER OF CIMARRON RD. AND EL CAMPO GRANDE AVE.
67	8LV90 19SES	798.359	F N D CITY OF LAS VEGAS RIVET AND ROUND PLATE IN CONCRETE CYLINDER, NORTHWEST CORNER OF CENTENNIAL PKWY. AND FORT APACHE RD.	80	8LV90 29C4	770.549	F N D CITY OF LAS VEGAS RIVET AND ROUND PLATE IN CONCRETE PAD, NORTHEAST CORNER OF TROPICAL PKWY. AND EL CAPITAN WAY, ±75' NORTH OF TROPICAL PKWY.
68	8LV90 19W6	845.417	F N D CITY OF LAS VEGAS RIVET AND ROUND PLATE IN CONCRETE CYLINDER, SOUTHWEST CORNER OF DEER SPRINGS WAY AND CONQUISTADOR ST.	81	8LV90 29E6	761.714	F N D CITY OF LAS VEGAS RIVET AND ROUND PLATE IN CONCRETE PAD, NORTHWEST CORNER OF TROPICAL PKWY. AND RILEY ST. ±100' NORTH OF TROPICAL PKWY.
69	8LV90 20E6	775.198	F N D CITY OF LAS VEGAS RIVET AND ROUND PLATE IN CONCRETE CYLINDER, NORTHWEST CORNER OF DEER SPRINGS WAY AND RILEY ST.	82	8LV90 30C4	812.376	F N D CITY OF LAS VEGAS RIVET AND ROUND PLATE IN CONCRETE CYLINDER, NORTHWEST CORNER OF TROPICAL PKWY. AND GRAND CANYON DR. NEAR POWER POLE P85901.
70	8LV90 20N6	788.901	F N D CITY OF LAS VEGAS RIVET AND ROUND PLATE IN CONCRETE CYLINDER, NORTHEAST CORNER OF EL CAPITAN WAY AND DORRELL LN.	83	8LV90 30E6	799.472	F N D CITY OF LAS VEGAS RIVET AND ROUND PLATE IN CONCRETE PAD, ±80' EAST OF SOUTHEAST CORNER OF TROPICAL PKWY. AND TEE PEE LN.
71	0LV90 20NEE6	769.496	F N D CITY OF LAS VEGAS RIVET AND ROUND PLATE IN CONCRETE PAD, NORTHWEST CORNER OF DURANGO DR. AND CENTENNIAL WAY.	CLARK COUNTY VERTICAL CONTROL v.2003 CLARK COUNTY SURVEYOR'S OFFICE 5051 SOUTH PARADISE ROAD LAS VEGAS, NEVADA 89119 (702) 455-0640			
72	6LV90 20SWW6	801.549	F N D CITY OF LAS VEGAS RIVET AND ROUND PLATE IN CONCRETE CYLINDER, NORTHEAST CORNER OF FORT APACHE RD. AND ROME BLVD.				
				CONVERSION FACTOR: METERS X $\left(\frac{3937}{1200}\right)$ = U.S. SURVEY FEET REVISED 2003 SHEET 4 OF 5 19-60 SW			

No.	STATION	ELEVATION (METERS)		DESCRIPTION	No.	STATION	ELEVATION (METERS)		DESCRIPTION
84	8LV90 30SSW6	817.475	F N D	CITY OF LAS VEGAS PIN AND ROUND PLATE IN CONCRETE PAD, NORTHWEST CORNER OF ANN RD. AND CONQUISTADOR ST. ±30' WEST OF CONQUISTADOR ST.	97	9LV90 32W6	764.329	F N D	CITY OF LAS VEGAS PIN AND ROUND PLATE IN CONCRETE PAD, WEST SIDE OF CAMPBELL RD., ±142' SOUTH OF WASHBURN RD.
85	8LV90 30W6	821.989	F N D	CITY OF LAS VEGAS PIN AND ROUND PLATE IN CONCRETE PAD, NORTHEAST CORNER OF TROPICAL PKWY. AND CONQUISTADOR ST.	98	1LV90 33C4	728.627	F N D	CITY OF LAS VEGAS PIN AND ROUND PLATE IN TOP OF CURB, NORTHEAST CORNER OF WASHBURN RD. AND CIMARRON RD.
86	9LV90 31C4	795.579	F N D	CITY OF LAS VEGAS RIVET AND ROUND PLATE IN CONCRETE PAD, WEST SIDE OF GRAND CANYON DR., ±120' SOUTH OF WASHBURN RD.	99	8LV90 33E4	720.461	F N D	CITY OF LAS VEGAS RIVET AND ROUND PLATE IN TOP OF CURB, NORTH SIDE OF WASHBURN RD. OPPOSITE BUFFALO DR.
87	9LV90 31E6	783.885	F N D	CITY OF LAS VEGAS RIVET AND ROUND PLATE IN CONCRETE CYLINDER, SOUTHWEST CORNER OF WASHBURN RD. AND TEE PEE LN. NEAR 1/2 DELTA.	100	1LV90 33E6	723.912	F N D	CITY OF LAS VEGAS RIVET AND ROUND PLATE IN TOP OF CURB, NORTH SIDE OF WASHBURN RD. OPPOSITE CONOUGH LN.
88	8LV90 31S4	790.528	F N D	CITY OF LAS VEGAS RIVET AND ROUND PLATE IN CONCRETE PAD, NORTHEAST CORNER OF LONE MOUNTAIN RD. AND GRAND CANYON DR. ±200' NORTH OF LONE MOUNTAIN RD.	101	8LV90 33NNW6	739.891	F N D	CITY OF LAS VEGAS RIVET AND ROUND PLATE IN TOP OF CURB, SOUTH SIDE OF ANN RD. 1/4 MILE EAST OF DURANGO DR.
89	8LV90 31SES	765.857	F N D	CITY OF LAS VEGAS PIN AND ROUND PLATE IN CONCRETE POWER POLE BASE, NORTHWEST CORNER OF LONE MOUNTAIN RD. AND FORT APACHE RD. NEAR POWER POLE # X1099.	102				
90	8LV90 33NWS	746.411	F N D	CITY OF LAS VEGAS PIN AND ROUND PLATE IN TOP OF CURB, SOUTHEAST CORNER OF ANN RD. AND DURANGO DR. NEAR THE PT OF ANN RD.	103				
91	8LV90 32N4	764.025	F N D	CITY OF LAS VEGAS RIVET AND ROUND PLATE IN CONCRETE PAD, SOUTHEAST CORNER OF ANN RD. AND EL CAPITAN WAY, NEAR 1/2 DELTA.	104				
92	8LV90 32NNE6	755.474	F N D	CITY OF LAS VEGAS RIVET AND ROUND PLATE IN CONCRETE PAD, SOUTHEAST CORNER OF ANN RD. AND RILEY ST. ±175' SOUTH OF ANN RD.	105				
93	8LV90 32NNW6	773.045	F N D	CITY OF LAS VEGAS PIN AND ROUND PLATE IN CONCRETE PAD, SOUTHWEST CORNER OF ANN RD. AND CAMPBELL RD, ±200' SOUTH OF ANN RD.	106				
94	6LV90 32NWW6	778.015	F N D	CITY OF LAS VEGAS RIVET AND ROUND PLATE IN CONCRETE CYLINDER, NORTHEAST CORNER OF FORT APACHE RD. AND HAMMER LN. NEAR PT OF FORT APACHE RD.	107				
95	8LV90 32S4	748.153	F N D	CITY OF LAS VEGAS RIVET AND ROUND PLATE IN CONCRETE PAD, NORTHWEST CORNER OF LONE MOUNTAIN RD. AND EL CAPITAN WAY, ±80' NORTH OF LONE MOUNTAIN RD. AND APACHE RD.	CLARK COUNTY VERTICAL CONTROL v.2003 CLARK COUNTY SURVEYOR'S OFFICE 5051 SOUTH PARADISE ROAD LAS VEGAS, NEVADA 89119 (702) 455-0640				
96	8LV90 32S6	751.573	F N D	CITY OF LAS VEGAS RIVET AND ROUND PLATE IN TOP OF CURB, SOUTHWEST CORNER OF EL CAPITAN WAY AND LA MADRE WAY, NEAR PT OF LA MADRE WAY.					
					CONVERSION FACTOR: METERS X $\left(\frac{3937}{1200}\right)$ = U.S. SURVEY FEET REVISED 2003 SHEET 5 OF 5 19-60 SW				