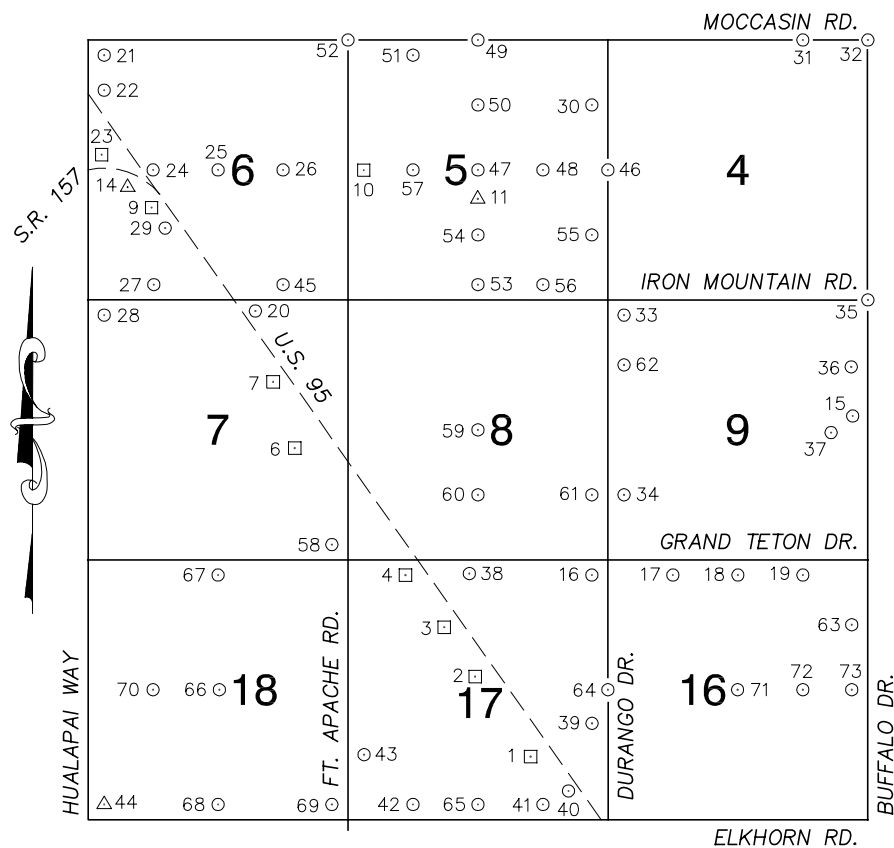


Township 19 South, Range 60 East Northwest Quarter



NORTH AMERICAN VERTICAL
DATUM OF 1988
— ALL ELEVATIONS IN METERS —

No.	STATION	ELEVATION (METERS)	DESCRIPTION
1	OC90 17SE6	784.363	F N D RIVET AND SQUARE ALUMINUM PLATE IN TOP CENTER OF HEADWALL ON THE WEST SIDE OF U.S. 95 NEAR MILE MARKER 89.60.
2	OC90 17C4	793.421	F N D RIVET AND SQUARE ALUMINUM PLATE IN TOP CENTER OF HEADWALL ON THE WEST SIDE OF U.S. 95 NEAR MILE MARKER 89.90.
3	OC90 17N6	799.086	F N D RIVET AND SQUARE ALUMINUM PLATE IN TOP CENTER OF HEADWALL ON THE WEST SIDE OF U.S. 95 NEAR MILE MARKER 90.15.
4	OC90 17NWS	808.524	F N D RIVET AND SQUARE ALUMINUM PLATE IN TOP CENTER OF HEADWALL ON THE WEST SIDE OF U.S. 95 NEAR MILE MARKER 90.55.
5			LOST 2003
6	OC90 7SE6	820.746	F N D RIVET AND SQUARE ALUMINUM PLATE IN TOP CENTER OF HEADWALL ON THE WEST SIDE OF U.S. 95 NEAR MILE MARKER 91.05.
7	OC90 7N6	833.911	F N D RIVET AND SQUARE ALUMINUM PLATE IN TOP CENTER OF HEADWALL ON THE WEST SIDE OF U.S. 95 NEAR MILE MARKER 91.5.
8			LOST 2003
9	2C90 6SWW6	852.165	F N D RIVET AND SQUARE ALUMINUM PLATE IN TOP OF HEADWALL ON THE WEST SIDE OF U.S. 95, +/- 400' SOUTH OF KYLE CANYON RD. (S.R. 157).
10	2C90 5W4	811.861	F N D SQUARE ALUMINUM PLATE WIRED TO A REBAR, 100' NORTHEAST OF FORT APACHE RD. AND LOG CABIN WAY.
11	V 169 1935	791.320	F N D USC&GS BRASS CAP, STAMPED "V169 1935", 165' SOUTH OF LOG CABIN WAY AND 100' EAST OF EL CAPITAN WAY. 35' NORTHEAST OF POWER POLE.

CLARK COUNTY VERTICAL CONTROL v.2003

CLARK COUNTY SURVEYOR'S OFFICE
5051 SOUTH PARADISE ROAD
LAS VEGAS, NEVADA 89119
(702) 455-0640

CONVERSION FACTOR:

METERS X $\left(\frac{3937}{1200}\right)$ = U.S. SURVEY FEET

REVISED
04/03/2003

SHEET
1 OF 4

19-60
NW

No.	STATION	ELEVATION (METERS)	DESCRIPTION	No.	STATION	ELEVATION (METERS)	DESCRIPTION
12			LOST 2003	25	7LV90 6C4	837.065	F N D CITY OF LAS VEGAS RIVET AND ROUND PLATE IN CONCRETE CYLINDER, SOUTHWEST CORNER OF LOG CABIN WAY AND GRAND CANYON DR.
13			LOST 2003	26	7LV90 6E6	823.711	F N D CITY OF LAS VEGAS RIVET AND ROUND PLATE IN CONCRETE CYLINDER, SOUTHWEST CORNER OF LOG CABIN WAY AND TEE PEE LN.
14	2C90 6W6	858.813	F N D USDA BRASS CAP ON AN IRON PIPE, 140' SOUTHWEST OF TELEPHONE POLE #26994T, SOUTHWEST CORNER OF THE U.S. 95/KYLE CANYON RD. TURNOFF.	27	8LV90 6SSW6	853.705	F N D CITY OF LAS VEGAS RIVET AND ROUND PLATE IN CONCRETE CYLINDER, NORTHWEST CORNER OF IRON MTN. RD. AND CONQUISTADOR ST.
15	2C90 9E4 2002	740.097	S E T RIVET AND ROUND ALUMINUM PLATE IN TOP OF CURB. APPROX. 0.5 MILE NORTH OF GRAND TETON DR. ON THE WEST SIDE OF BUFFALO DR.	28	7LV90 7NWS	865.673	F N D CITY OF LAS VEGAS RIVET AND ROUND PLATE IN CONCRETE CYLINDER, SOUTHEAST CORNER OF HUALAPAI WAY AND IRON MTN. RD.
16	0LV90 17NES	774.114	F N D CITY OF LAS VEGAS RIVET AND ROUND PLATE IN TOP OF CURB, SOUTHWEST CORNER OF DURANGO DR. AND GRAND TETON DR. NEAR 1/2 DELTA.	29	7LV90 6SWW6	863.230	F N D NDOT BRASS DISC ON WEST SIDE OF WEST FRONTAGE RD. 0.15 MILE SOUTH OF KYLE CANYON RD., STAMPED "311+73.68 PC DIST. 39.47 90 DEGREES".
17	2C90 16NNW6 2002	764.020	S E T RIVET AND ROUND ALUMINUM PLATE IN TOP OF CURB, SOUTH SIDE OF GRAND TETON DR. APPROX. 1320' EAST OF DURANGO DR.	30	8LV90 5NEE6	777.263	F N D CITY OF LAS VEGAS RIVET AND ROUND PLATE IN CONCRETE PAD, NORTH SIDE OF ROCKY AVE., NEAR 8500 ROCKY AVE.
18	2C90 16N4 2002	754.329	S E T RIVET AND ROUND ALUMINUM PLATE IN TOP OF CURB, SOUTHWEST CORNER OF GRAND TETON DR. AND CIMARRON RD. NEAR THE PC OF GRAND TETON DR.	31	1LV90 4NNE6	756.907	F N D BLM BRASS CAP '1990' AT MOCCASIN RD. AND CONOUGH LN.
19	2C90 16NNE6 2002	744.924	S E T RIVET AND ROUND ALUMINUM PLATE IN TOP OF CURB, SOUTHWEST CORNER OF GRAND TETON DR. AND PALM GROVE LN. NEAR THE PC OF GRAND TETON DR.	32	1LV90 4NES	754.165	F N D BLM BRASS CAP '1990' AT MOCCASIN RD. AND BUFFALO DR.
20	8LV90 7N4	838.837	F N D CITY OF LAS VEGAS RIVET AND ROUND PLATE IN TOP OF HEADWALL, SOUTHEAST CORNER OF IRON MTN. RD. AND GRAND CANYON DR.	33	8LV90 9NWS	771.947	F N D CITY OF LAS VEGAS RIVET AND ROUND PLATE IN CONCRETE CYLINDER, SOUTHEAST CORNER OF IRON MTN. RD. AND DURANGO DR.
21	0LV90 6NWS	854.890	F N D CITY OF LAS VEGAS RIVET AND ROUND PLATE IN CONCRETE CYLINDER, NORTHEAST CORNER OF MOCCASIN RD. AND HUALAPAI WAY.	34	8LV90 9SWW6	772.909	F N D CITY OF LAS VEGAS RIVET AND ROUND PLATE IN CONCRETE CYLINDER, SOUTHEAST CORNER OF DURANGO DR. AND RACEL ST. 5' WEST OF POWER POLE #U6030.
22	7LV90 6NWW6	858.420	F N D NDOT BRASS DISC W/CLV TAG, WEST SIDE OF EAST FRONTAGE RD. 0.4 MILE SOUTH OF END OF ROAD.	35	1LV90 9NES	744.729	F N D BLM BRASS CAP AT BUFFALO DR. AND IRON MTN. RD.
23	0C90 6W4	859.774	S E T RIVET AND SQUARE ALUMINUM PATE IN TOP OF HEADWALL, SOUTHWEST SIDE OF US 95, 0.45 MILE NORTH OF MILE MARKER 92. ±200' NORTHEAST OF HUALAPAI WAY AND LOG CABIN WAY.	CLARK COUNTY VERTICAL CONTROL v.2003 CLARK COUNTY SURVEYOR'S OFFICE 5051 SOUTH PARADISE ROAD LAS VEGAS, NEVADA 89119 (702) 455-0640			
24	7LV90 6W6	849.101	F N D CITY OF LAS VEGAS RIVET AND ROUND PLATE IN TOP OF HEADWALL, EAST SIDE OF EAST FRONTAGE RD., SOUTHWEST OF LOG CABIN WAY AND CONQUISTADOR ST.				
				CONVERSION FACTOR: METERS X $\left(\frac{3937}{1200}\right)$ = U.S. SURVEY FEET REVISED 04/03/2003			
				SHEET 2 OF 4			
				19-60 NW			

No.	STATION	ELEVATION (METERS)	DESCRIPTION	No.	STATION	ELEVATION (METERS)	DESCRIPTION
36	8LV90 9NEE6	745.325	F N D CITY OF LAS VEGAS RIVET AND ROUND PLATE IN A CONCRETE ELECTRICAL PAD, NORTHWEST CORNER OF COKE ST. AND BRENT LN.	49	1LV90 5N4	790.103	F N D BLM BRASS CAP '1990', MOCCASIN RD. AND EL CAPITAN WAY.
37	8LV90 9E4	742.519	F N D CITY OF LAS VEGAS RIVET AND ROUND PLATE IN CONCRETE CYLINDER, SOUTHWEST CORNER OF HORSE DR. AND COKE ST., NEAR POWER POLE #24335T.	50	8LV90 5N6	791.664	F N D CITY OF LAS VEGAS RIVET AND ROUND PLATE IN CONCRETE CYLINDER, NORTHWEST CORNER OF EL CAPITAN WAY AND ROCKY AVE. NEAR POWER POLE #63133.
38	8LV90 17N4	796.244	F N D CITY OF LAS VEGAS RIVET AND ROUND PLATE IN LVVWD CONCRETE PAD, ±150 SOUTHWEST OF GRAND TETON DR. AND EL CAPITAN WAY.	51	0LV90 5NNW6	799.704	F N D CITY OF LAS VEGAS RIVET AND ROUND PLATE IN CONCRETE CYLINDER, NORTHWEST CORNER OF IRON MTN. RD. AND CONQUISTADOR ST.
39	0LV90 17SEE6	775.174	F N D CITY OF LAS VEGAS RIVET AND ROUND PLATE IN CONCRETE TRANSFORMER PAD, WEST SIDE OF TULE SPRINGS RD. ±700' NORTH OF SUNNY SPRINGS DR.	52	0LV90 5NWS	810.800	F N D BLM BRASS CAP '1956' AT MOCCASIN RD. AND FORT APACHE RD.
40	8LV90 17SES	778.950	F N D CITY OF LAS VEGAS RIVET AND ROUND PLATE IN TOP OF SOUTH END OF HEADWALL, WEST SIDE OF WEST FRONTAGE RD. ±400' NORTH OF ELKHORN RD. 0.15 MILE NORTH OF ENTRANCE TO MTN. RIDGE PARK.	53	8LV90 5S4	791.148	F N D CITY OF LAS VEGAS RIVET AND ROUND PLATE IN CONCRETE CYLINDER, NORTHEAST CORNER OF IRON MTN. RD. AND EL CAPITAN WAY.
41	6LV90 17SSE6	781.713	F N D CITY OF LAS VEGAS RIVET AND ROUND PLATE IN CONCRETE CYLINDER, ±38' NORTH OF ELKHORN RD. CENTERLINE AND HOMESTEAD RD.	54	8LV90 5S6	792.192	F N D CITY OF LAS VEGAS RIVET AND ROUND PLATE IN CONCRETE CYLINDER, NORTHWEST CORNER OF EL CAPITAN WAY AND O'HARE RD.
42	8LV90 17SSW6	802.763	F N D CITY OF LAS VEGAS RIVET AND ROUND PLATE IN CONCRETE CYLINDER, NORTH OF ELKHORN RD. AND CAMPBELL RD.	55	8LV90 5SEE6	773.411	F N D CITY OF LAS VEGAS RIVET AND ROUND PLATE IN CONCRETE CYLINDER, NORTHWEST CORNER OF O'HARE RD. AND DURANGO DR.
43	7LV90 17SWW6	817.886	F N D CITY OF LAS VEGAS RIVET AND ROUND PLATE IN CONCRETE CYLINDER, SOUTHEAST CORNER OF FORT APACHE RD. AND SEVERENCE LN.	56	8LV90 5SSE6	780.943	F N D CITY OF LAS VEGAS RIVET AND ROUND PLATE IN CONCRETE CYLINDER, NORTHEAST CORNER OF IRON MTN. RD. AND HOMESTEAD RD.
44	8LV90 18SWS	868.435	F N D CLARK COUNTY GIS CONTROL POINT #806. ±74' NORTH OF SECTION CORNER AT HUALAPAI WAY AND ELKHORN RD.	57	7LV90 5W6	801.786	F N D CITY OF LAS VEGAS RIVET AND ROUND PLATE IN CONCRETE CYLINDER, NORTHEAST CORNER OF LOG CABIN WAY AND CAMPBELL RD.
45	8LV90 6SSE6	827.166	F N D CITY OF LAS VEGAS RIVET AND ROUND PLATE IN CONCRETE CYLINDER, NORTHWEST CORNER OF IRON MTN. RD. AND TEE PEE LN.	58	8LV90 7SES	817.147	F N D CITY OF LAS VEGAS RIVET AND ROUND PLATE IN CONCRETE CYLINDER, NORTHWEST CORNER OF GRAND TETON DR. AND FORT APACHE RD.
46	1LV90 4W4	775.469	F N D 3" BRASS CAP, RLS 3573 IN CONCRETE, LOG CABIN WAY AND DURANGO DR.	59	8LV90 8C4	791.277	F N D CITY OF LAS VEGAS RIVET AND ROUND PLATE IN TOP OF CURB, SOUTHEAST CORNER OF HORSE DR. AND EL CAPITAN WAY.
47	8LV90 5C4	791.083	F N D CITY OF LAS VEGAS RIVET AND ROUND PLATE IN CONCRETE PAD, NORTHEAST CORNER OF LOG CABIN WAY AND EL CAPITAN WAY, ±185' NORTH OF LOG CABIN WAY.	CLARK COUNTY VERTICAL CONTROL v.2003 CLARK COUNTY SURVEYOR'S OFFICE 5051 SOUTH PARADISE ROAD LAS VEGAS, NEVADA 89119 (702) 455-0640			
48	7LV90 5E6	781.789	F N D CITY OF LAS VEGAS RIVET AND ROUND PLATE IN CONCRETE CYLINDER, NORTHWEST CORNER OF LOG CABIN WAY AND HOMESTEAD RD. 2' EAST OF POWER POLE #T19816.				
				CONVERSION FACTOR: METERS X $\left(\frac{3937}{1200}\right)$ = U.S. SURVEY FEET REVISED 04/03/2003			
				SHEET 3 OF 4			
				19-60 NW			

No.	STATION	ELEVATION (METERS)	DESCRIPTION	No.	STATION	ELEVATION (METERS)	DESCRIPTION
60	8LV90 8S6	792.531	F N D CITY OF LAS VEGAS RIVET AND ROUND PLATE IN TOP OF CURB, NORTHWEST CORNER OF EL CAPITAN WAY AND RACEL ST.	73	8LV90 16E4	736.569	F N D CITY OF LAS VEGAS RIVET AND ROUND PLATE IN TOP OF CURB, NORTHWEST CORNER OF BUFFALO DR. AND FARM RD. NEAR PT OF BUFFALO DR.
61	0LV90 8SEE6	773.589	F N D CITY OF LAS VEGAS RIVET AND ROUND PLATE IN TOP OF CURB, NORTHWEST CORNER OF DURANGO DR. AND RACEL ST.	74			
62	8LV90 9NWW6	771.361	F N D CITY OF LAS VEGAS RIVET AND ROUND PLATE IN CONCRETE CYLINDER, NORTHEAST CORNER OF DURANGO DR. AND BRENT LN.	75			
63	8LV90 16NEE6	736.756	F N D CITY OF LAS VEGAS RIVET AND ROUND PLATE IN TOP OF CURB, SOUTHWEST CORNER OF BUFFALO DR. AND CERTITUDE AVE.	76			
64	8LV90 16W4	774.747	F N D 2 1/2" BRASS CAP, PLS 7008 IN CONCRETE, FARM RD. AND TULE SPRINGS RD.	77			
65	8LV90 17S4	791.619	F N D CITY OF LAS VEGAS RIVET AND ROUND PLATE IN CONCRETE CYLINDER, NORTHEAST CORNER OF ELKHORN RD. AND EL CAPITAN WAY.	78			
66	9LV90 18C4	845.788	F N D CITY OF LAS VEGAS RIVET AND ROUND PLATE IN CONCRETE CYLINDER, SOUTHWEST CORNER OF FARM RD. AND GRAND CANYON DR.	79			
67	8LV90 18N4	842.612	F N D CITY OF LAS VEGAS RIVET AND ROUND PLATE IN CONCRETE CYLINDER, SOUTHEAST CORNER OF GRAND TETON DR. AND GRAND CANYON DR.	80			
68	8LV90 18S4	840.780	F N D CITY OF LAS VEGAS RIVET AND ROUND PLATE IN CONCRETE CYLINDER, NORTHEAST CORNER OF ELKHORN RD. AND GRAND CANYON DR.	81			
69	8LV90 18SES	815.421	F N D CITY OF LAS VEGAS RIVET AND ROUND PLATE IN CONCRETE CYLINDER, NORTHWEST CORNER OF ELKHORN RD. AND FORT APACHE RD.	82			
70	9LV90 18W6	858.631	F N D CITY OF LAS VEGAS RIVET AND ROUND PLATE IN CONCRETE CYLINDER, SOUTHWEST CORNER FARM RD. AND CONQUISTADOR ST.	83			
71	8LV90 16C4	754.210	F N D CITY OF LAS VEGAS RIVET AND ROUND PLATE IN TOP OF CURB, SOUTHWEST CORNER OF FARM RD. AND CIMARRON RD. NEAR PT OF CIMARRON RD.	CLARK COUNTY VERTICAL CONTROL v.2003 CLARK COUNTY SURVEYOR'S OFFICE 5051 SOUTH PARADISE ROAD LAS VEGAS, NEVADA 89119 (702) 455-0640			
72	9LV90 16E6	744.944	F N D CITY OF LAS VEGAS RIVET AND ROUND PLATE IN TOP OF CURB, NORTHEAST CORNER OF FARM RD. AND PALM GROVE LN. NEAR PT OF FARM RD.				
				CONVERSION FACTOR: METERS X $\left(\frac{3937}{1200}\right)$ = U.S. SURVEY FEET REVISED 04/03/2003			
				SHEET 4 OF 4 19-60 NW			