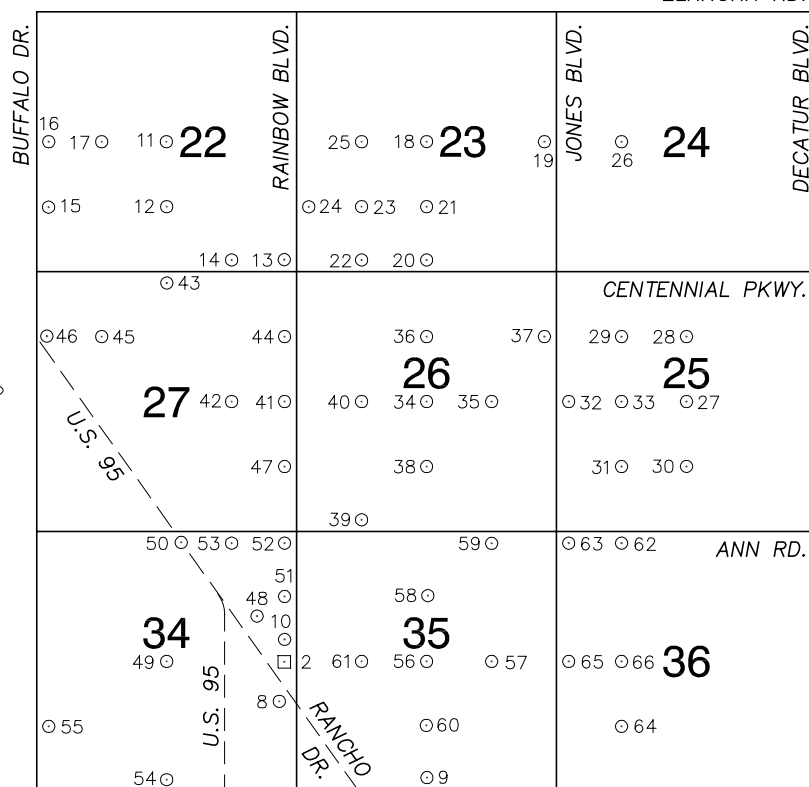


Township 19 South, Range 60 East Southeast Quarter

ELKHORN RD.



LONE MOUNTAIN RD.

NORTH AMERICAN VERTICAL
DATUM OF 1988
— ALL ELEVATIONS IN METERS —

No.	STATION	ELEVATION (METERS)	DESCRIPTION
1			LOST 2003
2	0C90 34E4	708.404	F N D RIVET AND SQUARE ALUMINUM PLATE IN CONCRETE BASE OF ELECTRIC METER PEDESTAL AT EAST R/W FENCE OF RANCHO DR. AND 0.25 MILES NORTH ON RAINBOW BLVD. NEAR POWER POLE # P85026
3			LOST 2003
4			LOST 2003
5			LOST 2003
6			LOST 2003
7			LOST 2003
8	8LV90 34SEE6	708.140	F N D CITY OF LAS VEGAS RIVET AND ROUND PLATE IN TOP OF CURB, NORTHWEST CORNER OF RANCHO DR. AND SANTA FE, IN FRONT OF SANTA FE STATION HOTEL.
9	0LV90 35S4	701.398	F N D CITY OF LAS VEGAS RIVET AND ROUND PLATE IN TOP OF CURB, NORTHWEST CORNER OF TORREY PINES DR. AND LONE MTN. RD. NEAR THE PT OF TORREY PINES DR.
10	5LV90 34E4	707.747	F N D CITY OF LAS VEGAS RIVET AND ROUND PLATE IN TOP OF CURB, NORTHWEST CORNER OF RAINBOW BLVD. AND WELCOME LN. NEAR THE PT OF RAINBOW BLVD.
11	6LV90 22C4	718.750	F N D CITY OF LAS VEGAS RIVET AND ROUND PLATE IN CONCRETE PAD, NEAR 6735 TENAYA WAY. ±100' NORTH OF BATH DR.

CLARK COUNTY VERTICAL CONTROL v.2003

CLARK COUNTY SURVEYOR'S OFFICE
5051 SOUTH PARADISE ROAD
LAS VEGAS, NEVADA 89119
(702) 455-0640

CONVERSION FACTOR:
METERS X $\left(\frac{3937}{1200}\right)$ = U.S. SURVEY FEET
REVISED 2003 SHEET 1 OF 4 19-60 SE

No.	STATION	ELEVATION (METERS)	DESCRIPTION		No.	STATION	ELEVATION (METERS)	DESCRIPTION				
12	6LV90 22S6	717.777	F N D	CITY OF LAS VEGAS RIVET AND ROUND PLATE IN CONCRETE MAILBOX PAD, SOUTHEAST CORNER OF TENAYA WAY AND ROME BLVD.	25	8LV90 23W6	712.354	F N D	CITY OF LAS VEGAS RIVET AND ROUND PLATE IN CONCRETE CYLINDER, NORTHEAST CORNER OF DEER SPRINGS WAY AND REBECCA RD. ±2' SOUTH OF METAL FENCE POST.			
13	8LV90 22SES	711.602	F N D	CITY OF LAS VEGAS RIVET AND ROUND PLATE IN CONCRETE CYLINDER, ±55' NORTHWEST OF CENTENNIAL PKWY. AND RAINBOW BLVD. NEAR BLOCK WALL.	26	8LV90 24W6	706.695	F N D	CITY OF LAS VEGAS RIVET AND ROUND PLATE IN CONCRETE CYLINDER, NORTHEAST CORNER OF DEER SPRINGS WAY AND LEON AVE. ±2' NORTHEAST OF TELEPHONE POLE #19620T.			
14	8LV90 22SSE6	714.721	F N D	CITY OF LAS VEGAS RIVET AND ROUND PLATE IN CONCRETE CYLINDER, NORTHWEST CORNER OF CENTENNIAL PKWY. AND RIO VISTA ST. NEAR PC OF RIO VISTA ST.	27	8LV90 25C4	699.520	F N D	CITY OF LAS VEGAS RIVET AND ROUND PLATE IN TOP OF CURB, NORTHEAST CORNER OF TROPICAL PKWY. AND BRADLEY RD. NEAR THE PC OF TROPICAL PKWY.			
15	8LV90 22SWW6	729.946	F N D	3" BRASS CAP IN CONCRETE, ±180' NORTHEAST OF BUFFALO DR. AND ROME BLVD.	28	0LV90 25N6	700.832	F N D	CITY OF LAS VEGAS RIVET AND ROUND PLATE IN TOP OF CURB, SOUTHWEST CORNER OF BRADLEY RD. AND AZURE AVE. NEAR THE PT OF BRADLEY RD.			
16	8LV90 22W4	728.510	F N D	CITY OF LAS VEGAS RIVET AND ROUND PLATE IN TOP OF CURB, NORTHEAST CORNER OF BUFFALO DR. AND DEER SPRINGS WAY, NEAR PC OF DEER SPRINGS WAY.	29	0LV90 25NW6	702.574	F N D	CITY OF LAS VEGAS RIVET AND ROUND PLATE IN TOP OF CURB, SOUTH SIDE OF AZURE AVE. AND LEON AVE.			
17	8LV90 22W6	723.905	F N D	CITY OF LAS VEGAS RIVET AND ROUND PLATE IN CONCRETE PAD, ±150' SOUTH OF DEER SPRINGS WAY AND PIONEER WAY.	30	5LV90 25S6	698.772	F N D	CITY OF LAS VEGAS RIVET AND ROUND PLATE IN TOP OF CURB, SOUTHWEST CORNER OF BRADLEY RD. AND EL CAMPO GRANDE AVE. NEAR THE PT BRADLEY RD.			
18	5LV90 23C4	711.033	F N D	CITY OF LAS VEGAS RIVET AND ROUND PLATE IN CONCRETE CYLINDER, NORTHWEST CORNER OF DEER SPRINGS WAY AND TORREY PINES DR.	31	0LV90 25SW6	699.490	F N D	CITY OF LAS VEGAS RIVET AND ROUND PLATE IN TOP OF CURB, ±230' EAST OF THE ALIGNMENT OF EL CAMPO GRANDE AVE. AND CALVERTS ST.			
19	5LV90 23E4	707.741	F N D	CITY OF LAS VEGAS RIVET AND ROUND PLATE IN CONCRETE MAILBOX PAD, SOUTHWEST CORNER OF DEER SPRINGS WAY AND JONES BLVD.	32	0LV90 25W4	702.649	F N D	CITY OF LAS VEGAS RIVET AND ROUND PLATE IN TOP OF CURB, NORTHEAST CORNER OF TROPICAL PKWY. AND JONES BLVD. NEAR THE PC OF TROPICAL PKWY.			
20	8LV90 23S4	707.947	F N D	CITY OF LAS VEGAS RIVET AND ROUND PLATE IN CONCRETE CYLINDER, NORTHEAST CORNER OF CENTENNIAL PKWY. AND TORREY PINES DR.	33	8LV90 25W6	701.376	F N D	CITY OF LAS VEGAS RIVET AND ROUND PLATE IN TOP OF CURB ON THE SOUTH SIDE OF TROPICAL PKWY. AT THE PROJECTED ALIGNMENT OF LEON AVE.			
21	0LV90 23S6	708.755	F N D	CITY OF LAS VEGAS RIVET AND ROUND PLATE IN CONCRETE CYLINDER, TORREY PINES DR. AND ROME BLVD. ALIGNMENT.	34	5LV90 26C4	705.767	F N D	CITY OF LAS VEGAS RIVET AND ROUND PLATE IN CONCRETE PAD, SOUTH SIDE OF TROPICAL PKWY., ±170' WEST OF TORREY PINES DR.			
22	8LV90 23SSW6	709.781	F N D	CITY OF LAS VEGAS RIVET AND ROUND PLATE IN CONCRETE CYLINDER, NORTHWEST CORNER OF CENTENNIAL PKWY. AND REBECCA RD.	35	8LV90 26E6	703.934	F N D	CITY OF LAS VEGAS RIVET AND ROUND PLATE IN CONCRETE PAD, NORTHWEST CORNER OF TROPICAL PKWY. AND MAVERICK ST. JUST EAST OF 6280 TROPICAL PKWY.			
23	8LV90 23SW6	711.304	F N D	CITY OF LAS VEGAS RIVET AND ROUND PLATE IN CONCRETE CYLINDER, SOUTHWEST CORNER OF REBECCA RD. AND ROME BLVD. NEAR 1/2 DELTA.	CLARK COUNTY VERTICAL CONTROL v.2003 CLARK COUNTY SURVEYOR'S OFFICE 5051 SOUTH PARADISE ROAD LAS VEGAS, NEVADA 89119 (702) 455-0640							
24	8LV90 23SWW6	713.240	F N D	CITY OF LAS VEGAS RIVET AND ROUND PLATE IN CONCRETE CYLINDER, NORTHEAST CORNER OF RAINBOW BLVD. AND ROME BLVD. NEAR 1/2 DELTA.								
					CONVERSION FACTOR: METERS X $\left(\frac{3937}{1200}\right)$ = U.S. SURVEY FEET							
					REVISED 2003			SHEET 2 OF 4		19-60 SE		

No.	STATION	ELEVATION (METERS)	DESCRIPTION	No.	STATION	ELEVATION (METERS)	DESCRIPTION
36	0LV90 26N6	706.674	F N D CITY OF LAS VEGAS RIVET AND ROUND PLATE IN TOP OF CURB, NORTHWEST CORNER OF TORREY PINES DR. AND AZURE AVE. NEAR THE PC OF TORREY PINES DR.	49	5LV90 34C4	714.125	F N D CITY OF LAS VEGAS RIVET AND ROUND PLATE IN TOP OF CURB, EAST SIDE OF TENAYA WAY AT WASHBURN RD. ON POINT OF CURVATURE.
37	0LV90 26NEE6	704.389	F N D CITY OF LAS VEGAS RIVET AND ROUND PLATE IN CONCRETE PAD, NORTHWEST CORNER OF JONES BLVD. AND AZURE AVE.	50	8LV90 34N4	716.042	F N D NORTH BOLT OF STREET LIGHT IN MEDIAN OF U.S. 95, ±600' SOUTH OF ANN RD.
38	5LV90 26S6	704.808	F N D CITY OF LAS VEGAS RIVET AND ROUND PLATE IN CONCRETE CYLINDER, NORTHWEST CORNER OF TORREY PINES DR. AND EL CAMPO GRANDE AVE.	51	8LV90 34NEE6	707.807	F N D CITY OF LAS VEGAS RIVET AND ROUND PLATE IN TOP OF CURB, WEST SIDE OF RAINBOW BLVD. ±20' SOUTH OF THE HAMMER LN. ALIGNMENT.
39	8LV90 26SSW6	706.339	F N D CITY OF LAS VEGAS RIVET AND ROUND PLATE IN CONCRETE PAD, NORTHEAST CORNER OF ANN RD. AND REBECCA RD. ±110' NORTH OF REBECCA RD.	52	8LV90 34NES	708.826	F N D CITY OF LAS VEGAS RIVET AND ROUND PLATE IN TOP OF CURB, SOUTHWEST CORNER OF ANN RD. AND RAINBOW BLVD. NEAR THE PT OF RAINBOW BLVD.
40	8LV90 26W6	707.521	F N D CITY OF LAS VEGAS RIVET AND ROUND PLATE IN CONCRETE CYLINDER, NORTHEAST CORNER OF TROPICAL PKWY. AND REBECCA RD. 1' NORTH OF TEL. POLE #X3777.	53	8LV90 34NNE6	713.842	F N D CITY OF LAS VEGAS RIVET AND ROUND PLATE IN TOP OF CURB, SOUTHEAST CORNER OF ANN RD. AND RIO VISTA ST. NEAR THE PT OF ANN RD.
41	8LV90 27E4	710.544	F N D CITY OF LAS VEGAS RIVET AND ROUND PLATE IN TOP CURB, NORTHWEST CORNER OF TROPICAL PKWY. AND RAINBOW BLVD. NEAR THE PT OF TROPICAL PKWY.	54	1LV90 34S4	709.710	F N D CITY OF LAS VEGAS RIVET AND ROUND PLATE IN TOP OF CURB, NORTHEAST CORNER OF LONE MTN. RD. AND TENAYA WAY, NEAR 1/2 DELTA.
42	8LV90 27E6	713.249	F N D CITY OF LAS VEGAS RIVET AND ROUND PLATE IN TOP OF CURB, NORTHEAST CORNER OF TROPICAL PKWY. AND RIO VISTA ST.	55	8LV90 34SWW6	719.342	F N D CITY OF LAS VEGAS RIVET AND ROUND PLATE IN CONCRETE PAD, NORTHEAST CORNER OF BUFFALO DR. AND LA MADRE WAY.
43	1LV90 27N4	718.152	F N D 1 1/2" ALUMINUM CAP AT INTERSECTION OF CENTENNIAL PKWY. AND TENAYA WAY. PLS 6050.	56	5LV90 35C4	703.585	F N D CITY OF LAS VEGAS RIVET AND ROUND PLATE IN TOP OF CURB, NORTHEAST CORNER OF WASHBURN RD. AND TORREY PINES DR. NEAR THE PT OF TORREY PINES DR.
44	5LV90 27NEE6	711.026	F N D CITY OF LAS VEGAS RIVET AND ROUND PLATE IN TOP OF CURB, SOUTHWEST CORNER OF RAINBOW BLVD. AND AZURE AVE. NEAR THE PC OF AZURE AVE.	57	8LV90 35E6	700.768	F N D CITY OF LAS VEGAS RIVET AND ROUND PLATE IN TOP OF CURB, SOUTHWEST CORNER OF WASHBURN RD. AND MAVERICK ST. NEAR THE PT OF MAVERICK ST.
45	8LV90 27NW6	721.542	F N D CITY OF LAS VEGAS RIVET AND ROUND PLATE IN TOP OF CURB, ±100' NORTH OF THE NORTHEAST CORNER OF EXOTIC BLOOM DR. AND YOUNG DOE AVE.	58	5LV90 35N6	703.070	F N D CITY OF LAS VEGAS RIVET AND ROUND PLATE IN TOP OF CURB, NORTHEAST CORNER OF TORREY PINES DR. AND HAMMER LN. NEAR THE PT OF TORREY PINES DR.
46	8LV90 27NWW6	727.175	F N D CITY OF LAS VEGAS RIVET AND ROUND PLATE IN TOP OF CURB, FAR WEST END OF DURHAM AVE.	59	8LV90 35NNE6	702.108	F N D CITY OF LAS VEGAS RIVET AND ROUND PLATE IN TOP OF CURB, SOUTHEAST CORNER OF ANN RD. AND MAVERICK ST. NEAR THE PT OF MAVERICK ST.
47	0LV90 27SEE6	709.061	F N D CITY OF LAS VEGAS RIVET AND ROUND PLATE IN TOP OF CURB, WEST SIDE OF RAINBOW BLVD. ±200' NORTH OF EL CAMPO GRANDE AVE.	CLARK COUNTY VERTICAL CONTROL v.2003 CLARK COUNTY SURVEYOR'S OFFICE 5051 SOUTH PARADISE ROAD LAS VEGAS, NEVADA 89119 (702) 455-0640			
48	0LV90 34E6	708.791	F N D CITY OF LAS VEGAS RIVET AND ROUND PLATE IN TOP OF CURB, SOUTHWEST CORNER OF RANCHO SANTA FE DR. AND STANDING ROCK PL.				
				CONVERSION FACTOR: METERS X $\left(\frac{3937}{1200}\right)$ = U.S. SURVEY FEET REVISED 2003 SHEET 3 OF 4 19-60 SE			

No.	STATION	ELEVATION (METERS)	DESCRIPTION	No.	STATION	ELEVATION (METERS)	DESCRIPTION
60	5LV90 35S6	702.199	F N D CITY OF LAS VEGAS RIVET AND ROUND PLATE IN TOP OF CURB, NORTHEAST CORNER OF TORREY PINES DR. AND LONE MTN. RD. NEAR THE PT OF TORREY PINES DR.	73			
61	8LV90 35W6	705.873	F N D CITY OF LAS VEGAS RIVET AND ROUND PLATE IN TOP OF CURB, SOUTHEAST CORNER OF REBECCA RD. AND RANCHO SANTA FE DR. NEAR PT OF RANCHO SANTA FE DR.	74			
62	1LV90 36NNW6	698.557	F N D CITY OF LAS VEGAS RIVET AND SQUARE PLATE IN TOP OF CURB, SOUTHWEST CORNER OF ANN RD. AND CALVERTS ST. SOUTH SIDE OF ANN RD.	75			
63	5LV90 36NWS	700.314	F N D CITY OF LAS VEGAS RIVET AND ROUND PLATE IN TOP OF CURB, SOUTHEAST CORNER OF ANN RD. AND JONES BLVD. NEAR THE PC OF JONES BLVD.	76			
64	8LV90 36SW6	691.526	F N D CITY OF LAS VEGAS RIVET AND ROUND PLATE IN TOP OF CURB, EAST SIDE OF LEON AVE. ±20' NORTH AND OPPOSITE OF LA MADRE WAY.	77			
65	1LV90 36W4	696.749	F N D CITY OF LAS VEGAS RIVET AND ROUND PLATE IN TOP OF CURB, NORTHEAST CORNER OF WASHBURN RD. AND JONES BLVD. NEAR 1/2 DELTA.	78			
66	8LV90 36W6	693.208	F N D CITY OF LAS VEGAS RIVET AND ROUND PLATE IN TOP OF CURB, NORTHEAST CORNER OF WASHBURN RD. AND LEON AVE.	79			
67				80			
68				81			
69				82			
70				83			
71				CLARK COUNTY VERTICAL CONTROL v.2003 CLARK COUNTY SURVEYOR'S OFFICE 5051 SOUTH PARADISE ROAD LAS VEGAS, NEVADA 89119 (702) 455-0640			
72							
				CONVERSION FACTOR: METERS X $\left(\frac{3937}{1200}\right)$ = U.S. SURVEY FEET REVISED 2003 SHEET 4 OF 4 19-60 SE			