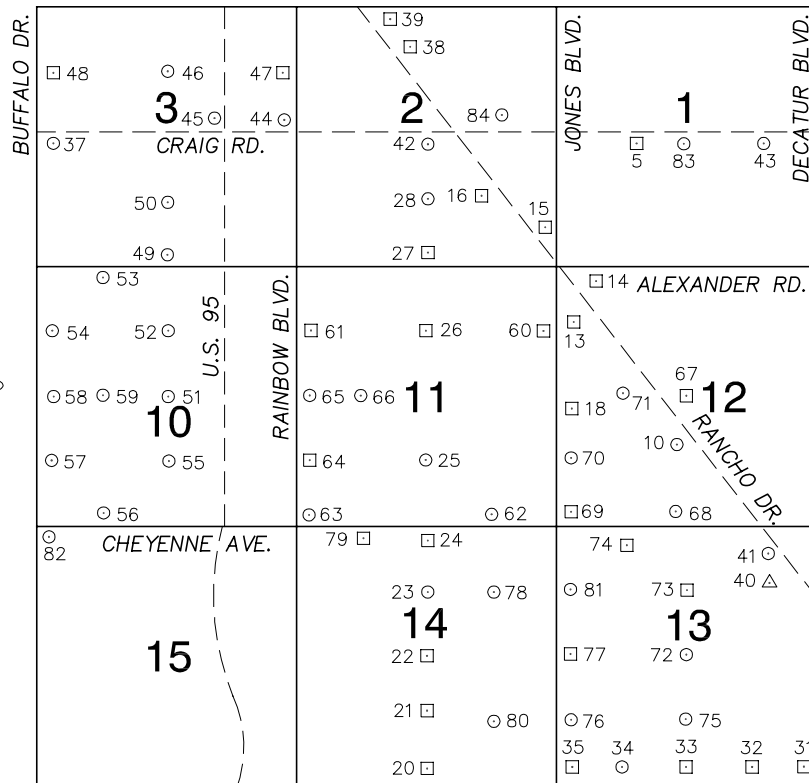


Township 20 South, Range 60 East Northeast Quarter

LONE MOUNTAIN RD.



SMOKE RANCH RD.

NORTH AMERICAN VERTICAL
DATUM OF 1988
— ALL ELEVATIONS IN METERS —

No.	STATION	ELEVATION (METERS)	DESCRIPTION
1			LOST 2003
2			LOST 2003
3			LOST 2003
4			LOST 2003
5	7C00 1W6	685.516	F N D RIVET AND SQUARE ALUMINUM PLATE IN TOP OF CURB, SOUTHWEST CORNER OF CRAIG RD. AND LEON AVE. NEAR THE PC OF CRAIG RD.
6			LOST 2003
7			LOST 2003
8			LOST 2003
9			LOST 1992
10	8LV00 12S6	686.788	F N D CITY OF LAS VEGAS PIN AND PLATE IN TOP OF CURB, SOUTHWEST CORNER OF RANCHO DR. AND MICHAEL WAY NEAR THE PC OF RANCHO DR., "NOT STAMPED"
11			LOST 2003

CLARK COUNTY VERTICAL CONTROL v.2003

CLARK COUNTY SURVEYOR'S OFFICE
5051 SOUTH PARADISE ROAD
LAS VEGAS, NEVADA 89119
(702) 455-0640

CONVERSION FACTOR:
METERS X $\left(\frac{3937}{1200}\right)$ = U.S. SURVEY FEET

REVISED 2003

SHEET
1 of 5

20-60
NE

No.	STATION	ELEVATION (METERS)	DESCRIPTION	No.	STATION	ELEVATION (METERS)	DESCRIPTION
12			LOST 2003	25	5LV00 11S6	697.265	F N D CITY OF LAS VEGAS PIN AND PLATE IN TOP OF CURB, NORTHWEST CORNER OF TORREY PINES DR. AND BUCKSKIN AVE. NEAR THE PC OF TORREY PINES DR. "NOT STAMPED"
13	7C00 12NW6	689.464	F N D RIVET AND SQUARE ALUMINUM PLATE IN TOP OF CURB, WEST SIDE OF RANCHO DR. NEAR THE NORTH END OF CRYSTAL PALACE SKATING CENTER, 3901 RANCHO DR.	26	5LV00 11N6	696.756	F N D CITY OF LAS VEGAS PIN AND PLATE IN TOP OF CURB, WEST SIDE OF TORREY PINES DR. JUST SOUTH OF CRESTFIELD AVE. AT 3764 TORREY PINES DR. "NOT STAMPED"
14	7C00 12NWS	690.448	F N D RIVET AND SQUARE ALUMINUM PLATE IN TOP OF SOUTH END OF CONCRETE HEADWALL, 7' EAST OF EAST EO OF RANCHO DR. APPROX. 125' SOUTH OF THE JONES BLVD./ALEXANDER RD. SWITCHOVER ALIGNMENT.	27	7C00 2S4	696.648	F N D RIVET AND SQUARE ALUMINUM PLATE IN TOP OF CURB, NORTHEAST CORNER OF TORREY PINES DR. AND ALEXANDER RD. NEAR THE PC OF TORREY PINES DR.
15	7C00 2SES	692.485	F N D RIVET AND SQUARE ALUMINUM PLATE IN TOP OF SOUTH END OF CONCRETE HEADWALL, 3.6' EAST OF EAST EO OF RANCHO DR. 450' NORTHWEST OF ALEXANDER RD.	28	5LV00 2S6	698.344	F N D CITY OF LAS VEGAS PIN AND PLATE IN TOP OF CURB, SOUTHEAST CORNER OF TORREY PINES DR. AND JORY TRAIL, NEAR THE PC OF TORREY PINES DR. "NOT STAMPED"
16	7C00 2SE6	695.662	F N D RIVET AND SQUARE ALUMINUM PLATE IN TOP OF CURB, WEST SIDE OF RANCHO DR. JUST SOUTH OF THE NORTH DRIVEWAY GOING INTO UMC QUICK CARE CENTER, 0.3 MILES SOUTHEAST OF CRAIG RD.	29			LOST 2003
17			LOST 2003	30			LOST 2003
18	7C00 12W4	691.826	F N D RIVET AND SQUARE ALUMINUM PLATE IN TOP OF CURB, SOUTHEAST CORNER OF GOWAN RD. AND JONES BLVD. NEAR THE PC OF JONES BLVD.	31	8C00 13SES	672.267	F N D 2" DOME HEAD BRASS CAP REFERENCE MONUMENT IN TOP OF CURB, NORTHWEST CORNER OF SMOKE RANCH RD. AND DECATUR BLVD. NEAR 1/3 DELTA.
19			LOST 2003	32	8C00 13SSE6	675.344	F N D 2" DOME HEAD BRASS CAP REFERENCE MONUMENT IN TOP OF CURB, NORTHWEST CORNER OF SMOKE RANCH RD. AND LEONARD LN.
20	7C00 14S4	697.968	F N D RIVET AND SQUARE ALUMINUM PLATE IN TOP OF CURB, NORTHEAST CORNER OF TORREY PINES DR. AND SMOKE RANCH RD. NEAR THE PC OF TORREY PINES DR.	33	8C00 13S4	678.775	F N D 2" DOME HEAD BRASS CAP REFERENCE MONUMENT IN TOP OF CURB, NORTHEAST CORNER OF SMOKE RANCH RD. & MICHAEL WAY NEAR THE PC OF SMOKE RANCH RD.
21	7C00 14S6	697.732	F N D RIVET AND SQUARE ALUMINUM PLATE IN TOP OF CURB, NORTHEAST CORNER OF TORREY PINES DR. AND URSUS DR. NEAR THE PC OF TORREY PINES DR.	34	1LV00 13SSW6	682.740	F N D CITY OF LAS VEGAS PIN AND PLATE IN TOP OF CURB, NORTHEAST CORNER OF SMOKE RANCH RD. AND WINWOOD ST. NEAR THE PC OF SMOKE RANCH RD., "NOT STAMPED"
22	7C00 14C4	696.662	F N D RIVET AND SQUARE ALUMINUM PLATE IN TOP OF CURB, SOUTHEAST CORNER OF TORREY PINES DR. AND PEAK DR. NEAR THE PC OF TORREY PINES DR.	35	8C00 13SWS	688.714	F N D 2" DOME HEAD BRASS CAP REFERENCE MONUMENT, NORTHEAST CORNER OF SMOKE RANCH RD. AND JONES BLVD. NEAR THE PC OF SMOKE RANCH RD.
23	1LV00 14N6	696.650	F N D CITY OF LAS VEGAS PIN AND PLATE IN TOP OF CURB, NORTHWEST CORNER OF TORREY PINES DR. AND BROOKS AVE. NEAR 1/2 DELTA, "NOT STAMPED"	CLARK COUNTY VERTICAL CONTROL v.2003 CLARK COUNTY SURVEYOR'S OFFICE 5051 SOUTH PARADISE ROAD LAS VEGAS, NEVADA 89119 (702) 455-0640			
24	7C00 14N4	697.022	F N D RIVET AND SQUARE ALUMINUM PLATE IN TOP OF CURB, SOUTHWEST CORNER OF TORREY PINES DR. AND CHEYENNE AVE. NEAR THE PC OF TORREY PINES DR.				
				CONVERSION FACTOR: METERS X $\left(\frac{3937}{1200}\right)$ = U.S. SURVEY FEET REVISED 2003 SHEET 2 OF 5 20-60 NE			

No.	STATION	ELEVATION (METERS)	DESCRIPTION		No.	STATION	ELEVATION (METERS)	DESCRIPTION				
36				LOST 2003	48	1LV00 3NWW6	716.123	F N D	CITY OF LAS VEGAS PIN AND PLATE IN TOP OF CURB, NORTHWEST CORNER OF BUFFALO DR. AND RED COACH AVE. NEAR THE PC OF RED COACH AVE.			
37	1LV00 3W4	714.676	F N D	CITY OF LAS VEGAS PIN AND PLATE IN ELECTRIC BASE, SOUTH SIDE OF CRAIG RD., 250' EAST OF BUFFALO DR.	49	1LV00 3S4	708.583	F N D	CITY OF LAS VEGAS PIN AND PLATE IN TOP OF CURB, NORTHEAST CORNER OF ALEXANDER DR. AND TENAYA WAY NEAR 1/2 DELTA.			
38	0C00 2NW6	705.010	F N D	RIVET AND SQUARE ALUMINUM PLATE IN TOP OF CURB, NORTHWEST CORNER OF RANCHO DR. AND PAINTED DESERT DR. NEAR THE PC OF RANCHO DR.	50	6LV00 3S6	709.410	F N D	CITY OF LAS VEGAS PIN AND PLATE IN TOP OF CURB, ON EAST SIDE OF TENAYA WAY ±400' NORTH OF LARKVALE WAY.			
39	0C00 2NNW6	706.791	F N D	RIVET AND SQUARE ALUMINUM PLATE IN TOP OF CURB, SOUTHEAST CORNER OF RANCHO DR. AND LONE MOUNTAIN RD. NEAR THE PC OF RANCHO DR.	51	9LV00 10C4	706.755	F N D	CITY OF LAS VEGAS PIN AND PLATE IN TOP OF CURB, NORTHWEST CORNER OF GOWAN RD. AND TENAYA WAY NEAR THE PT OF TENAYA WAY.			
40	U 398 1980	675.118	F N D	USC&GS BRASS CAP, STAMPED "U-398 1980", IN PLASTIC WELL, 0.3 MILES NORTHWEST OF DECATUR BLVD., 124' WEST OF THE WEST EO OF RANCHO DR. 30.2' WEST OF THE SOUTHWEST CORNER OF A FENCE, 19' NORTH OF THE NORTH EDGE OF BUILDING, APT #1, RAINBOW APTS. AT 2951 RANCHO DR.	52	6LV00 10N6	708.550	F N D	CITY OF LAS VEGAS PIN AND PLATE IN TOP OF CURB, WEST SIDE OF TENAYA WAY. ±375' NORTH OF MAYBROOK DR.			
					53	1LV00 10NNW6	710.893	F N D	CITY OF LAS VEGAS PIN AND PLATE IN TOP OF CURB, SOUTH SIDE OF ALEXANDER RD. ±30' EAST OF THE PIONEER WAY ALIGNMENT.			
41	2LV00 13NE6	679.748	F N D	CITY OF LAS VEGAS PIN AND PLATE IN TOP OF CURB, WEST SIDE OF RANCHO DR. 500' SOUTH OF CHEYENNE AVE. AT 3101 RANCHO DR.	54	8LV00 10NWW6	714.295	F N D	CITY OF LAS VEGAS PIN AND PLATE IN TOP OF CURB, SOUTHEAST CORNER OF BUFFALO DR. AND GILMORE AVE. NEAR THE PC OF BUFFALO DR.			
42	7C00 2C4 1997	699.778	S E T	RIVET AND ROUND ALUMINUM PLATE IN TOP OF CURB, SOUTHWEST CORNER OF CRAIG RD. AND TORREY PINES DR. NEAR THE PC OF TORREY PINES DR.	55	6LV00 10S6	708.420	F N D	CITY OF LAS VEGAS PIN AND PLATE IN TOP OF CURB, SOUTHWEST CORNER OF TENAYA WAY AND BUCKSKIN AVE. NEAR THE PT OF TENAYA WAY.			
43	8LV00 1E6W	675.296	F N D	CITY OF LAS VEGAS PIN AND PLATE IN TOP OF CURB, SOUTHWEST CORNER OF CRAIG RD. AND LAKE TAHOE ST.	56	8LV00 10SSW6	715.864	F N D	CITY OF LAS VEGAS PIN AND PLATE IN TOP OF CURB, NORTHWEST CORNER OF CHEYENNE AVE. AND PIONEER WAY NEAR THE PT OF CHEYENNE AVE.			
44	8LV00 3E4	705.796	F N D	CITY OF LAS VEGAS PIN AND PLATE IN TOP OF CURB, NORTHWEST CORNER OF CRAIG RD. AND RAINBOW BLVD. NEAR 1/2 DELTA.	57	1LV00 10SWW6	719.759	F N D	CITY OF LAS VEGAS PIN AND PLATE IN TOP OF CURB, EAST SIDE OF BUFFALO DR. NEAR 3300 BUFFALO DR.			
45	8LV00 3E6	708.634	F N D	CITY OF LAS VEGAS PIN AND PLATE IN TOP OF HEADWALL ON WEST SIDE OF U.S. 95 AT CRAIG RD. ±50' WEST OF U.S. 95. SOUTH BOUND TRAFFIC LANE.	58	8LV00 10W4	715.865	F N D	CITY OF LAS VEGAS PIN AND PLATE IN TOP OF CURB, SOUTHEAST CORNER OF BUFFALO DR. AND GOWAN RD. NEAR THE PC OF BUFFALO DR.			
46	6LV00 3N6	710.013	F N D	CITY OF LAS VEGAS PIN AND PLATE IN TOP OF CURB, NORTHWEST CORNER OF TENAYA WAY AND CHIC AVE. NEAR THE PT OF CHIC AVE.	CLARK COUNTY VERTICAL CONTROL v.2003 CLARK COUNTY SURVEYOR'S OFFICE 5051 SOUTH PARADISE ROAD LAS VEGAS, NEVADA 89119 (702) 455-0640							
47	1LV00 3NEE6	706.839	F N D	CITY OF LAS VEGAS PIN AND PLATE IN TOP OF CURB, SOUTHWEST CORNER OF RAINBOW BLVD. AND RED COACH AVE. NEAR THE PT OF RED COACH AVE.								
					CONVERSION FACTOR: METERS X $\left(\frac{3937}{1200}\right)$ = U.S. SURVEY FEET							
					REVISED 2003			SHEET 3 OF 5		20-60 NE		

No.	STATION	ELEVATION (METERS)	DESCRIPTION	No.	STATION	ELEVATION (METERS)	DESCRIPTION
59	9LV00 10W6	711.217	F N D CITY OF LAS VEGAS PIN AND PLATE IN TOP OF CURB, NORTH SIDE OF GOWAN RD. OPPOSITE PIONEER WAY.	72	2LV00 13C4	680.507	F N D CITY OF LAS VEGAS PIN AND PLATE IN TOP OF CURB, NORTHWEST CORNER OF AVENIDA CABALLO AND MICHAEL WAY NEAR 1/2 DELTA.
60	1LV00 11NEE6	691.543	F N D CITY OF LAS VEGAS PIN AND PLATE IN TOP OF CURB, NORTHWEST CORNER OF JONES BLVD. AND GILMORE AVE. NEAR THE PT OF JONES BLVD.	73	2LV00 13N6	681.556	F N D CITY OF LAS VEGAS PIN AND PLATE IN TOP OF CURB, SOUTHEAST CORNER OF MICHAEL WAY AND MOSSMAN AVE.
61	1LV00 11NNW6	702.929	F N D CITY OF LAS VEGAS PIN AND PLATE IN TOP OF CURB, EAST SIDE OF RAINBOW BLVD. OPPOSITE RIVERDALE WAY.	74	1LV00 13NNW6	689.336	F N D CITY OF LAS VEGAS PIN AND PLATE IN TOP OF CURB, SOUTHEAST CORNER OF CHEYENNE AVE. AND TERRY ST. NEAR THE PT OF CHEYENNE AVE.
62	8LV00 11SSE6	695.146	F N D CITY OF LAS VEGAS PIN AND PLATE IN TOP OF CURB, NORTHEAST CORNER OF CHEYENNE AVE. AND MAVERICK ST. NEAR THE PT OF MAVERICK ST.	75	5LV00 13S6	679.849	F N D CITY OF LAS VEGAS PIN AND PLATE IN TOP OF CURB, NORTHWEST CORNER OF MICHAEL WAY AND CLEARY CT. NEAR THE PT OF MICHAEL WAY.
63	8LV00 11SWS	701.491	F N D CITY OF LAS VEGAS PIN AND PLATE IN TOP OF CURB, NORTHEAST CORNER OF CHEYENNE AVE. AND RAINBOW BLVD. NEAR 1/2 DELTA.	76	1LV00 13SWW6	688.206	F N D CITY OF LAS VEGAS PIN AND PLATE IN TOP OF CURB, SOUTHEAST CORNER OF JONES BLVD. AND ALFRED DR.
64	1LV00 11SWW6	701.089	F N D CITY OF LAS VEGAS PIN AND PLATE IN TOP OF CURB, NORTHEAST CORNER OF RAINBOW BLVD. AND BUCKSKIN AVE. NEAR THE PT OF RAINBOW BLVD.	77	1LV00 13W4	689.693	F N D CITY OF LAS VEGAS PIN AND PLATE IN TOP OF CURB, NORTHEAST CORNER OF PASEO MONTANA AND JONES BLVD. NEAR THE PT OF JONES BLVD.
65	9LV00 11W4	700.997	F N D CITY OF LAS VEGAS PIN AND PLATE IN TOP OF CURB, NORTHEAST CORNER OF GOWAN RD. AND RAINBOW BLVD. NEAR THE PT OF GOWAN RD.	78	6LV00 14NE6	694.515	F N D CITY OF LAS VEGAS PIN AND PLATE IN TOP OF CURB, NORTH SIDE OF BROOKS AVE. OPPOSITE MAVERICK ST.
66	9LV00 11W6	698.993	F N D CITY OF LAS VEGAS PIN AND PLATE IN TOP OF CURB, NORTHWEST CORNER OF GOWAN RD. AND SHERMCREST WAY NEAR THE PT OF GOWAN RD.	79	0LV00 14NNW6	699.139	F N D CITY OF LAS VEGAS PIN AND PLATE IN TOP OF CURB, SOUTHEAST CORNER OF CHEYENNE AVE. AND GAREHIME ST. NEAR THE PT OF CHEYENNE AVE.
67	5LV00 12C4	685.019	F N D CITY OF LAS VEGAS PIN AND PLATE IN TOP OF CURB, NORTHEAST CORNER OF GOWAN RD. AND BRADLEY RD. NEAR THE PT OF BRADLEY RD.	80	6LV00 14SE6	694.888	F N D CITY OF LAS VEGAS PIN AND PLATE IN TOP OF CURB, WEST SIDE OF MAVERICK ST., OPPOSITE CARTIER AVE.
68	1LV00 12S4	686.121	F N D CITY OF LAS VEGAS PIN AND PLATE IN TOP OF CURB, NORTHEAST CORNER OF CHEYENNE AVE. AND MICHAEL WAY NEAR THE PC OF CHEYENNE AVE.	81	1LV00 13NWW6	691.075	F N D CITY OF LAS VEGAS PIN AND PLATE IN TOP OF CURB, ±100' NORTH AND OPPOSITE OF BROOKS AVE. IN FRONT OF 3050 JONES BLVD.
69	1LV00 12SWS	691.632	F N D CITY OF LAS VEGAS PIN AND PLATE IN TOP OF CURB, NORTHEAST CORNER OF CHEYENNE AVE. AND JONES BLVD. NEAR THE PC OF CHEYENNE AVE.	82	5LV00 15NWS	721.766	F N D CITY OF LAS VEGAS PIN AND PLATE IN TOP OF CURB, SOUTHEAST CORNER OF CHEYENNE AVE. AND BUFFALO DR. NEAR THE PC OF CHEYENNE AVE.
70	1LV00 12SWW6	692.176	F N D CITY OF LAS VEGAS PIN AND PLATE IN TOP OF CURB, EAST SIDE OF JONES BLVD. ±250' NORTH OF SANTA CATALINA WAY.	CLARK COUNTY VERTICAL CONTROL v.2003 CLARK COUNTY SURVEYOR'S OFFICE 5051 SOUTH PARADISE ROAD LAS VEGAS, NEVADA 89119 (702) 455-0640			
71	9LV00 12W6	688.543	F N D CITY OF LAS VEGAS PIN AND PLATE IN TOP OF CURB, NORTHWEST CORNER OF GOWAN RD. AND MIRAMAR DR. NEAR 5804 GOWAN RD.				
				CONVERSION FACTOR: METERS X $\left(\frac{3937}{1200}\right)$ = U.S. SURVEY FEET REVISED 2003 SHEET 4 OF 5 20-60 NE			

No.	STATION	ELEVATION (METERS)	DESCRIPTION	No.	STATION	ELEVATION (METERS)	DESCRIPTION
83	5LV00 1C4	677.381	F N D CITY OF LAS VEGAS PIN AND PLATE IN TOP OF CURB, SOUTHWEST CORNER OF CRAIG RD. AND BRADLEY RD. NEAR 1/3 DELTA OF CRAIG RD., "NOT STAMPED".	96			
84	7C00 2E6 1997	696.586	S E T RIVET AND ROUND ALUMINUM PLATE IN TOP OF CURB, NORTH CURB LINE OF CRAIG RD. JUST WEST OF A DRIVEWAY LEADING INTO 4402 CRAIG RD.	97			
85				98			
86				99			
87				100			
88				101			
89				102			
90				103			
91				104			
92				105			
93				106			
94				CLARK COUNTY VERTICAL CONTROL v.2003 CLARK COUNTY SURVEYOR'S OFFICE 5051 SOUTH PARADISE ROAD LAS VEGAS, NEVADA 89119 (702) 455-0640			
95							
				CONVERSION FACTOR: METERS X $\left(\frac{3937}{1200}\right)$ = U.S. SURVEY FEET REVISED 2003 SHEET 5 OF 5 20-60 NE			