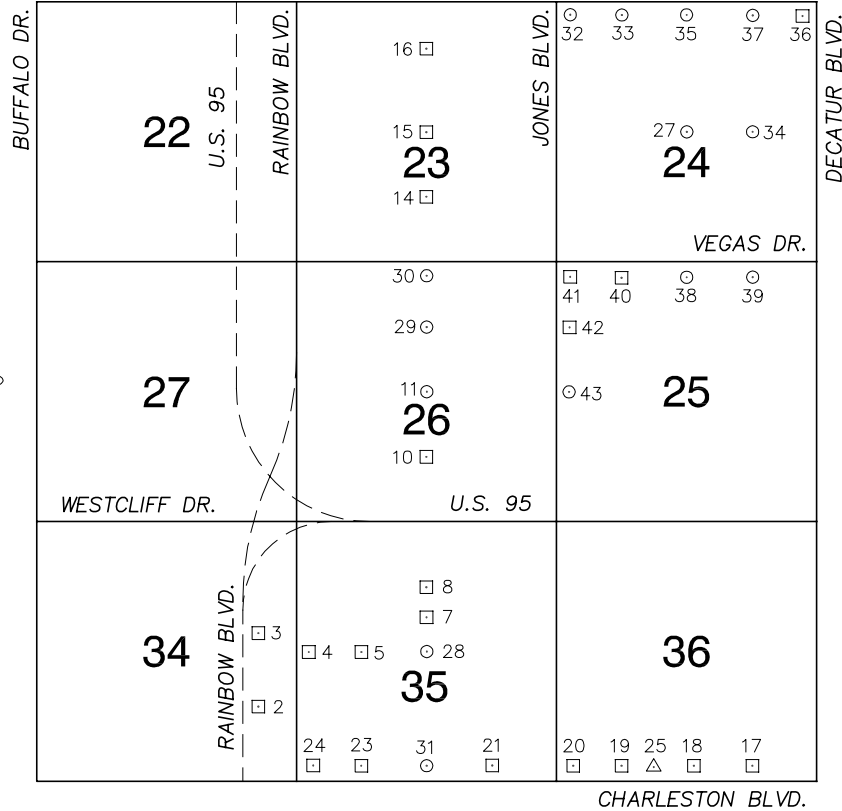


# Township 20 South, Range 60 East Southeast Quarter

SMOKE RANCH RD.



NORTH AMERICAN VERTICAL  
DATUM OF 1988  
— ALL ELEVATIONS IN METERS —

No.	STATION	ELEVATION (METERS)	DESCRIPTION
1			LOST 2003
2	7C00 34SE6	733.407	F N D RIVET AND SQUARE ALUMINUM PLATE IN TOP OF CURB, NORTHEAST QUADRANT OF RAINBOW BLVD. AND MAIN ENTRANCE TO THE HOME DEPOT, ±12' SOUTH OF A DROP INLET.
3	7C00 34E6	733.501	F N D RIVET AND SQUARE ALUMINUM PLATE IN TOP OF CURB, NORTHEAST CORNER OF RAINBOW BLVD. AND ALTA DR. NEAR 1/4 DELTA ON RAINBOW BLVD.
4	7C00 35W4	728.007	F N D RIVET AND SQUARE ALUMINUM PLATE IN TOP OF CURB, NORTHEAST CORNER OF ALTA DR. AND LORENZI ST. NEAR THE PC OF ALTA DR.
5	7C00 35W6	720.565	F N D RIVET AND SQUARE ALUMINUM PLATE IN TOP OF CURB, NORTHEAST CORNER OF ALTA DR. AND TILTON LN. NEAR THE PC OF ALTA DR.
6			LOST 2003
7	CLV 06035B1	712.973	F N D CITY OF LAS VEGAS PIN AND PLATE IN TOP OF CURB, NORTHEAST CORNER OF TORREY PINES DR. AND ARLINGTON AVE. NEAR THE PC OF TORREY PINES DR. STAMPED CLV BM# 06035 B1".
8	7C00 35N6	712.179	F N D RIVET AND SQUARE ALUMINUM PLATE IN TOP OF CURB, NORTHEAST CORNER OF TORREY PINES DR. AND ELTON AVE. NEAR THE PC OF TORREY PINES DR.
9			LOST 2003
10	7C00 26S6	712.196	F N D RIVET AND SQUARE ALUMINUM PLATE IN TOP OF CURB, NORTHEAST CORNER OF TORREY PINES DR. AND HILL VIEW AVE.
11	2LV00 26C4	710.265	F N D CITY OF LAS VEGAS PIN AND PLATE IN TOP OF CURB, SOUTHEAST CORNER OF TORREY PINES DR. AND WASHINGTON AVE. NEAR THE PC OF WASHINGTON AVE.

## CLARK COUNTY VERTICAL CONTROL v.2003

CLARK COUNTY SURVEYOR'S OFFICE  
5051 SOUTH PARADISE ROAD  
LAS VEGAS, NEVADA 89119  
(702) 455-0640

CONVERSION FACTOR:  
METERS X  $\left(\frac{3937}{1200}\right)$  = U.S. SURVEY FEET  
REVISED 2003 SHEET 1 OF 3 20-60 SE

No.	STATION	ELEVATION (METERS)	DESCRIPTION	No.	STATION	ELEVATION (METERS)	DESCRIPTION
12			LOST 2003	25	K 367 1968	691.413	F N D USC&GS BRASS CAP, STAMPED "K367, RESET 1968", LOCATED IN NORTH TOP OF CURB OF CHARLESTON BLVD. 300' EAST OF UPLAND BLVD.
13			LOST 2003	26			LOST 2003
14	7C00 23S6	704.598	F N D RIVET AND SQUARE ALUMINUM PLATE IN TOP OF CURB, NORTHEAST CORNER OF TORREY PINES DR. AND STARCREST DR. AT A STREET LIGHT POLE.	27	2LV00 24C4	679.725	F N D CITY OF LAS VEGAS RIVET AND ALUMINUM PLATE IN TOP OF CURB, SOUTHEAST CORNER OF LAKE MEAD BLVD. AND MICHAEL WAY, NEAR THE PC OF MICHAEL WAY.
15	7C00 23C4	702.485	F N D RIVET AND SQUARE ALUMINUM PLATE IN TOP OF CURB, SOUTHWEST CORNER OF TORREY PINES DR. AND LAKE MEAD BLVD. NEAR THE PC OF TORREY PINES DR.	28	7C00 35C4 1997	712.969	S E T RIVET AND ROUND ALUMINUM PLATE IN TOP OF CURB, NORTHEAST CORNER OF TORREY PINES DR. AND ALTA DR. NEAR THE PC OF TORREY PINES DR.
16	7C00 23N6	699.818	F N D RIVET AND SQUARE ALUMINUM PLATE IN TOP OF CURB, SOUTHWEST CORNER OF TORREY PINES DR. AND LITTLE PINES WAY.	29	7C00 26N6 1997	710.348	S E T RIVET AND ROUND ALUMINUM PLATE IN TOP OF CURB, NORTHEAST CORNER OF TORREY PINES DR. AND CARMEN BLVD. NEAR THE PC OF TORREY PINES DR.
17	7C00 36SSE6	676.376	F N D RIVET AND SQUARE ALUMINUM PLATE IN TOP OF CURB, NORTHEAST CORNER OF CHARLESTON BLVD. AND BRUSH ST. NEAR THE PC OF CHARLESTON BLVD.	30	7C00 26N4 1997	707.312	S E T RIVET AND ROUND ALUMINUM PLATE IN TOP OF CURB, SOUTHEAST CORNER OF TORREY PINES DR. AND VEGAS DR. NEAR THE PC OF TORREY PINES DR.
18	7C00 36S4	683.577	F N D RIVET AND SQUARE ALUMINUM PLATE IN TOP OF CURB, NORTHEAST CORNER OF CHARLESTON BLVD. AND MOHAWK ST. NEAR THE PC OF CHARLESTON BLVD.	31	8C00 35S4 1998	714.773	S E T RIVET AND ROUND ALUMINUM PLATE IN TOP OF CURB, NORTHEAST CORNER OF CHARLESTON BLVD. AND TORREY PINES DR. NEAR THE PC OF CHARLESTON BLVD.
19	7C00 36SSW6	692.238	F N D RIVET AND SQUARE ALUMINUM PLATE IN TOP OF CURB, NORTHEAST CORNER OF CHARLESTON BLVD. AND UPLAND BLVD. NEAR THE PC OF CHARLESTON BLVD.	32	1LV00 24NWS	688.845	F N D CITY OF LAS VEGAS RIVET AND ALUMINUM PLATE IN TOP OF CURB, SOUTHEAST CORNER OF SMOKE RANCH RD. AND JONES BLVD.
20	0LV00 36SWS	698.097	F N D CITY OF LAS VEGAS PIN AND PLATE IN TOP OF CURB, NORTHEAST CORNER OF CHARLESTON BLVD. AND JONES BLVD. NEAR THE PC OF CHARLESTON BLVD., "NOT STAMPED"	33	2LV00 24NNW6	682.954	F N D CITY OF LAS VEGAS RIVET AND ALUMINUM PLATE IN TOP OF CURB, SOUTHEAST CORNER OF SMOKE RANCH RD. AND WINWOOD ST.
21	7C00 35SSE6	703.861	F N D RIVET AND SQUARE ALUMINUM PLATE IN TOP OF CURB, NORTHEAST CORNER OF CHARLESTON BLVD. AND SALEM DR. NEAR THE PC OF CHARLESTON BLVD.	34	2LV00 24E6	674.791	F N D CITY OF LAS VEGAS RIVET AND ALUMINUM PLATE IN TOP OF CURB, SOUTHEAST CORNER OF LAKE MEAD BLVD. AND LEONARD LN. NEAR 1/2 DELTA.
22			LOST 2003	35	2LV00 24N4	678.807	F N D CITY OF LAS VEGAS RIVET AND ALUMINUM PLATE IN TOP OF CURB, SOUTHEAST CORNER OF SMOKE RANCH RD. AND MICHAEL WAY, NEAR 1/2 DELTA.
23	7C00 35SSW6	723.098	F N D RIVET AND SQUARE ALUMINUM PLATE IN TOP OF CURB, NORTHEAST CORNER OF CHARLESTON BLVD. AND REDWOOD ST. NEAR THE PC OF CHARLESTON BLVD.	<b>CLARK COUNTY VERTICAL CONTROL v.2003</b>  CLARK COUNTY SURVEYOR'S OFFICE 5051 SOUTH PARADISE ROAD LAS VEGAS, NEVADA 89119 (702) 455-0640			
24	2LV00 35SWS	728.429	F N D CITY OF LAS VEGAS PIN AND PLATE IN TOP OF CURB, NORTHEAST CORNER OF CHARLESTON BLVD. AND LORENZI ST. NEAR THE PC OF CHARLESTON BLVD.				
				CONVERSION FACTOR: METERS X $\left(\frac{3937}{1200}\right)$ = U.S. SURVEY FEET  REVISED 2003      SHEET 2 OF 3 <b>20-60 SE</b>			

No.	STATION	ELEVATION (METERS)	DESCRIPTION	No.	STATION	ELEVATION (METERS)	DESCRIPTION
36	1LV00 24NES	672.033	F N D CITY OF LAS VEGAS RIVET AND ALUMINUM PLATE IN TOP OF CURB, SOUTHWEST CORNER OF DECATUR BLVD. AND SMOKE RANCH RD. NEAR THE PT OF DECATUR BLVD.	49			
37	2LV00 24NNE6	675.560	F N D CITY OF LAS VEGAS RIVET AND ALUMINUM PLATE IN TOP OF CURB, SOUTHWEST CORNER OF SMOKE RANCH RD. AND LEONARD LN. NEAR THE PC OF SMOKE RANCH RD.	50			
38	2LV00 25N4	683.352	F N D CITY OF LAS VEGAS RIVET AND ALUMINUM PLATE IN TOP OF CURB, SOUTHEAST CORNER OF VEGAS DR. AND MICHAEL WAY NEAR 1/2 DELTA	51			
39	2LV00 25NNE6	678.048	F N D CITY OF LAS VEGAS RIVET AND ALUMINUM PLATE IN TOP OF CURB, SOUTH SIDE OF VEGAS DR. OPPOSITE LEONARD LN.	52			
40	2LV00 25NNW6	689.876	F N D CITY OF LAS VEGAS RIVET AND ALUMINUM PLATE IN TOP OF CURB, SOUTHWEST CORNER OF VEGAS DR. AND SAYLOR WAY, NEAR THE PC OF VEGAS DR.	53			
41	0LV00 25NWS	694.409	F N D CITY OF LAS VEGAS RIVET AND ALUMINUM PLATE IN TOP OF CURB, SOUTHEAST CORNER OF JONES BLVD. AND VEGAS DR. NEAR THE PT OF JONES BLVD.	54			
42	0LV00 25NWW6	698.522	F N D CITY OF LAS VEGAS RIVET AND ALUMINUM PLATE IN TOP OF CURB, SOUTHEAST CORNER OF JONES BLVD. AND CARMEN BLVD. NEAR THE PC OF JONES BLVD.	55			
43	1LV00 25W4	700.306	F N D CITY OF LAS VEGAS RIVET AND ALUMINUM PLATE IN TOP OF CURB, SOUTHEAST CORNER OF JONES BLVD. AND WASHINGTON AVE. NEAR THE PT OF WASHINGTON AVE.	56			
44				57			
45				58			
46				59			
47				<b>CLARK COUNTY VERTICAL CONTROL v.2003</b>  CLARK COUNTY SURVEYOR'S OFFICE 5051 SOUTH PARADISE ROAD LAS VEGAS, NEVADA 89119 (702) 455-0640			
48							
				CONVERSION FACTOR: METERS X $\left(\frac{3937}{1200}\right)$ = U.S. SURVEY FEET  REVISED 2003      SHEET 3 OF 3 <b>20-60 SE</b>			