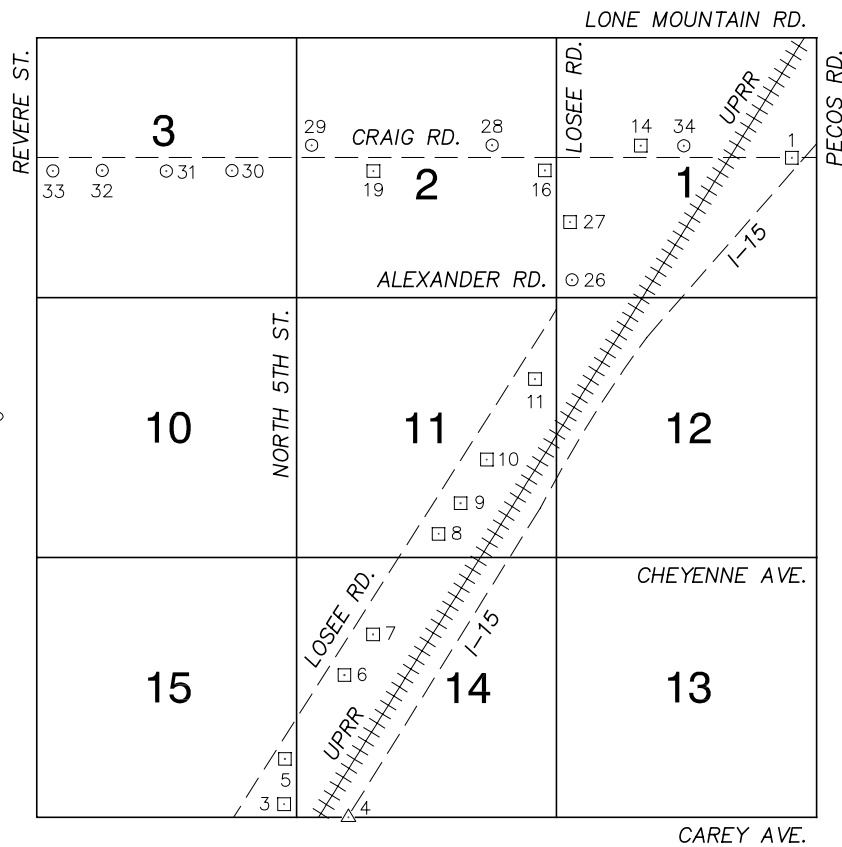


Township 20 South, Range 61 East Northeast Quarter



NORTH AMERICAN VERTICAL
DATUM OF 1988
— ALL ELEVATIONS IN METERS —

No.	STATION	ELEVATION (METERS)	DESCRIPTION
1	6C01 1E6	592.845	F N D RIVET AND SQUARE ALUMINUM PLATE IN TOP OF CURB IN THE CONCRETE CENTERLINE ISLAND ON CRAIG RD. NEAR THE WEST END OF THE I-15 OVERPASS.
2			LOST 2003
3	7C01 15SES	591.380	F N D RIVET AND SQUARE ALUMINUM PLATE IN TOP OF CURB, NORTHEAST CORNER OF LOSEE RD. AND CAREY AVE. NEAR THE PC OF LOSEE RD.
4	Q 399 1980	589.230	F N D USC&GS BRASS CAP, SET VERTICALLY IN NORTH FACE OF SOUTH CONCRETE BRIDGE SUPPORT COLUMN OF THE CAREY/I-15 OVERPASS JUST EAST OF RAILROAD TRACKS.
5	7C01 15SEE6	590.198	F N D RIVET AND SQUARE ALUMINUM PLATE IN TOP OF CURB, EAST SIDE OF LOSEE RD. NEAR THE NORTH PROPERTY LINE OF 2608 LOSEE RD.
6	7C01 14SWW6	588.301	F N D RIVET AND SQUARE ALUMINUM PLATE IN TOP OF CURB, EAST SIDE OF LOSEE RD. NEAR THE SOUTH PROPERTY LINE OF 2860 LOSEE RD. BY A METAL LIGHT POLE.
7	7C01 14NW6	587.355	F N D RIVET AND SQUARE ALUMINUM PLATE IN TOP OF CURB, NORTHEAST CORNER OF LOSEE RD. AND BROOKS AVE. NEAR A FIRE HYDRANT.
8	7C01 11S4	588.075	F N D RIVET AND SQUARE ALUMINUM PLATE IN TOP OF CURB, NORTHEAST CORNER OF LOSEE RD. AND CHEYENNE AVE. NEAR THE PC OF LOSEE RD.
9	7C01 11SE6	583.459	F N D RIVET AND SQUARE ALUMINUM PLATE IN TOP OF CURB, NORTHEAST CORNER OF LOSEE RD. AND COLTON AVE. JUST NORTH OF SMALL CONCRETE DRAINAGE DITCH, GOING EAST.
10	7C01 11E6	581.380	F N D RIVET AND SQUARE ALUMINUM PLATE IN TOP OF CURB, EAST SIDE OF LOSEE RD. NEAR GOWAN RD. ALIGNMENT, NEAR A FIRE HYDRANT.
11	7C01 11NEE6	581.096	F N D RIVET AND SQUARE ALUMINUM PLATE IN TOP OF CURB, EAST SIDE OF LOSEE RD. ACROSS THE STREET FROM 3823 LOSEE RD. NEAR A FIRE HYDRANT.
CLARK COUNTY VERTICAL CONTROL v.2003			
CLARK COUNTY SURVEYOR'S OFFICE 5051 SOUTH PARADISE ROAD LAS VEGAS, NEVADA 89119 (702) 455-0640		CONVERSION FACTOR: METERS X $\left(\frac{3937}{1200}\right)$ = U.S. SURVEY FEET	
REVISED 2003		SHEET 1 OF 2	20-61 NE

No.	STATION	ELEVATION (METERS)	DESCRIPTION	No.	STATION	ELEVATION (METERS)	DESCRIPTION
12			LOST 2003	25			LOST 2003
13			LOST 2003	26	NLV01 1SW5	581.963	F N D NORTH LAS VEGAS PIN AND PLATE IN TOP OF CURB, NORTHEAST CORNER OF LOSEE RD. AND ALEXANDER RD. NEAR THE PC OF ALEXANDER RD.
14	7C01 1W6	586.956	F N D RIVET AND SQUARE ALUMINUM PLATE IN TOP OF CONCRETE WINGWALL, NORTH SIDE CRAIG RD. WEST SIDE OF BERG ST.	27	7C01 1SW6 1997	585.273	S E T RIVET AND ROUND ALUMINUM PLATE IN TOP OF CURB, EAST SIDE OF LOSEE RD. AT O'NEIL DR. IN FRONT OF 4150 LOSEE RD.
15			LOST 2003	28	7C01 2E6 1997	590.161	S E T RIVET AND ROUND ALUMINUM PLATE IN TOP OF CURB, NORTHEAST CORNER OF LAWRENCE ST. AND CRAIG RD. NEAR THE PC OF CRAIG RD.
16	7C01 2E4	588.155	F N D RIVET AND SQUARE ALUMINUM PLATE IN TOP OF CURB, SOUTHWEST CORNER OF CRAIG RD. AND LOSEE RD. NEAR THE PC OF CRAIG RD.	29	NLV01 2W4	601.361	F N D NORTH LAS VEGAS PIN AND PLATE IN TOP OF CURB, NORTHEAST CORNER OF CRAIG RD. AND NORTH 5TH ST. NEAR THE PC OF CRAIG RD.
17			LOST 2003	30	7C01 3E6 1997	607.501	S E T RIVET AND ROUND ALUMINUM PLATE IN TOP OF CURB, SOUTHWEST CORNER OF CRAIG RD. AND GOLDFIELD ST. NEAR THE PC OF CRAIG RD.
18			LOST 2003	31	NLV01 3C4	613.334	F N D NORTH LAS VEGAS PIN AND PLATE IN TOP OF CURB, SOUTHEAST CORNER OF CRAIG RD. AND COMMERCE ST. NEAR THE PC OF CRAIG RD.
19	7C01 2W6	597.074	F N D RIVET AND SQUARE ALUMINUM PLATE IN TOP OF CURB, SOUTH SIDE OF CRAIG RD. 50' EAST OF DONNA ST.	32	7C01 3W6 1997	618.964	S E T RIVET AND ROUND ALUMINUM PLATE IN TOP OF CURB, SOUTHWEST CORNER OF CRAIG RD. AND KINGS HILL RD. 20' WEST OF THE PC OF CRAIG RD.
20			LOST 2003	33	7C01 3W4 1997	626.315	S E T RIVET AND ROUND ALUMINUM PLATE IN TOP OF CURB, SOUTHEAST CORNER OF CRAIG RD. AND REVERE ST. NEAR THE PC OF CRAIG RD.
21			LOST 2003	34	NLV01 1C4	586.488	F N D NORTH LAS VEGAS PIN AND PLATE IN TO OF CURB, NORTH SIDE OF CRAIG RD. 200' WEST OF RAILROAD TRACKS, 20' EAST OF BUS STOP #(8126).
22			LOST 2003	35			
23			LOST 2003	CLARK COUNTY VERTICAL CONTROL v.2003 CLARK COUNTY SURVEYOR'S OFFICE 5051 SOUTH PARADISE ROAD LAS VEGAS, NEVADA 89119 (702) 455-0640			
24			LOST 2003				
				CONVERSION FACTOR: METERS X $\left(\frac{3937}{1200}\right)$ = U.S. SURVEY FEET REVISED 2003 SHEET 2 OF 2 20-61 NE			