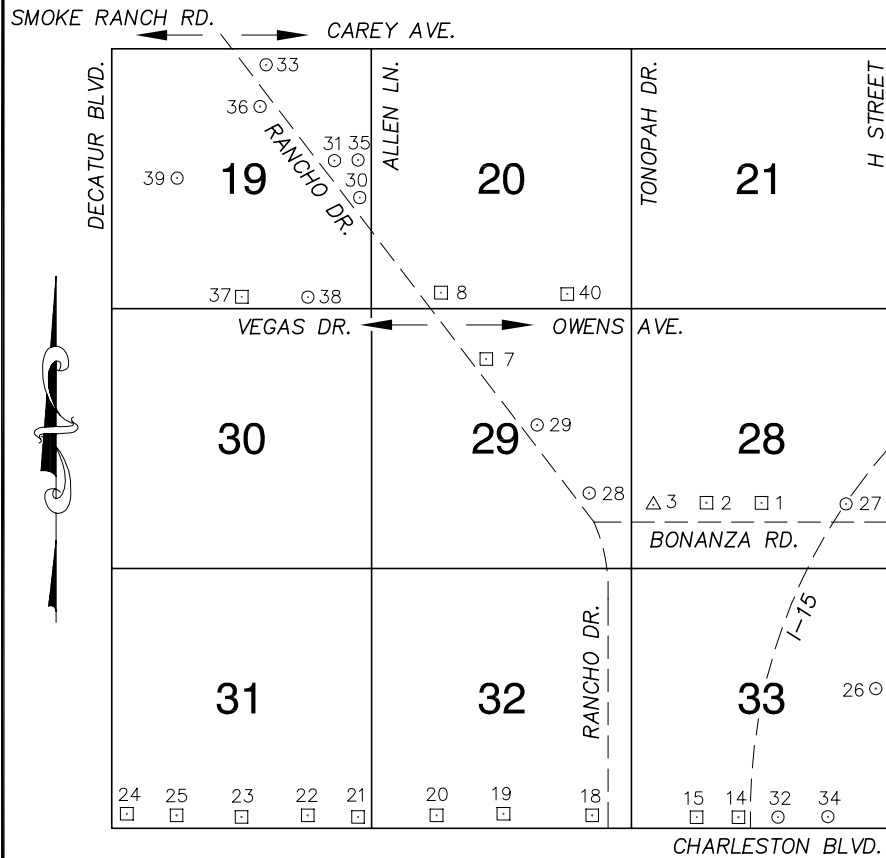


Township 20 South, Range 61 East Southwest Quarter



NORTH AMERICAN VERTICAL
DATUM OF 1988
— ALL ELEVATIONS IN METERS —

No.	STATION	ELEVATION (METERS)	DESCRIPTION
1	7C01 28S6	626.298	F N D RIVET AND SQUARE ALUMINUM PLATE IN TOP OF CURB, NORTHWEST CORNER OF BONANZA RD. AND MARTIN L. KING BLVD. NEAR THE PC OF BONANZA RD.
2	7C01 28SW6	628.539	F N D RIVET AND SQUARE ALUMINUM PLATE IN TOP CURB, NORTH SIDE OF BONANZA RD. NEAR EAST PROPERTY LINE OF 1804 BONANZA RD.
3	W 398 1980	631.073	F N D USC&GS BRASS CAP, STAMPED "W398 1980", NORTHEAST CORNER OF BONANZA RD. AND TONOPAH DR. 25' NORTH OF NORTH CURB ON BONANZA RD., AND 2' WEST OF A 4' BLOCK WALL, EAST SIDE OF TONOPAH DR.
4			LOST 2003
5			LOST 2003
6			LOST 2003
7	7C01 29NW6	642.490	F N D RIVET AND SQUARE ALUMINUM PLATE IN TOP OF CURB, NORTHEAST CORNER OF RANCHO DR. AND RIVERSIDE DR. NEAR THE PC OF RANCHO DR.
8	7C01 20SWS	645.256	F N D RIVET AND SQUARE ALUMINUM PLATE IN TOP OF CURB, NORTHEAST CORNER OF VEGAS DR. AND RANCHO DR. NEAR THE PC OF RANCHO DR.
9			LOST 2003
10			LOST 2003
11			LOST 2003

CLARK COUNTY VERTICAL CONTROL v.2003

CLARK COUNTY SURVEYOR'S OFFICE
5051 SOUTH PARADISE ROAD
LAS VEGAS, NEVADA 89119
(702) 455-0640

CONVERSION FACTOR:
METERS X $\left(\frac{3937}{1200}\right)$ = U.S. SURVEY FEET

REVISED 2003

SHEET
1 OF 3

20-61
SW

No.	STATION	ELEVATION (METERS)	DESCRIPTION		No.	STATION	ELEVATION (METERS)	DESCRIPTION					
12				LOST 2003	25	7C01 31SSW6	665.025	F N D	RIVET AND SQUARE ALUMINUM PLATE IN TOP OF CURB, NORTHEAST CORNER OF CHARLESTON BLVD. AND ESSEX DR. NEAR THE PC OF CHARLESTON BLVD.				
13				LOST 2003	26	7C01 33E4 1997	619.102	S E T	RIVET AND ROUND ALUMINUM PLATE IN TOP OF CURB, NORTHEAST CORNER OF THE GOVERNMENT CENTER, 13' SOUTH AND 2' WEST OF A 8' BLOCKWALL.				
14	7C01 33S4	623.433	F N D	RIVET AND SQUARE ALUMINUM PLATE IN TOP OF CURB, NORTHEAST CORNER OF CHARLESTON BLVD. AND DESERT LN. NEAR THE PC OF CHARLESTON BLVD.	27	2LV01 28SE6	623.148	S E T	CITY OF LAS VEGAS PIN AND PLATE IN TOP OF CURB, NORTH SIDE OF BONANZA RD. BETWEEN 1000 AND 1132 BONANZA RD.				
15	7C01 33SSW6	625.839	F N D	RIVET AND SQUARE ALUMINUM PLATE IN TOP OF CURB, NORTHEAST CORNER CHARLESTON BLVD. AND SHADOW LN. NEAR THE PC OF CHARLESTON BLVD.	28	7C01 29SE6 1997	635.183	S E T	RIVET AND ROUND ALUMINUM PLATE IN TOP OF CURB, NORTHEAST CORNER OF BONANZA RD. AND RANCHO DR. NEAR THE 1/2 DELTA OF THE TURN OUT ON THE ISLAND.				
16				LOST 2003	29	7C01 29C4 1997	639.074	S E T	RIVET AND ROUND ALUMINUM PLATE IN TOP OF CURB, NORTHEAST CORNER OF RANCHO DR. AND WASHINGTON AVE. NEAR THE PC OF RANCHO DR.				
17				LOST 2003	30	7C01 19SEE6 1997	650.689	S E T	RIVET AND ROUND ALUMINUM PLATE IN TOP OF CURB, NORTHEAST CORNER OF RANCHO DR. AND HOLLY AVE. NEAR THE PC OF RANCHO DR.				
18	7C01 32SSE6	630.246	F N D	RIVET AND SQUARE ALUMINUM PLATE IN TOP OF CURB, NORTHWEST CORNER OF CHARLESTON BLVD. AND RANCHO DR. NEAR THE PC OF CHARLESTON BLVD.	31	7C01 19E6 1997	656.588	S E T	RIVET AND ROUND ALUMINUM PLATE IN TOP OF CURB, SOUTHEAST CORNER OF RANCHO DR. AND CORAN LN. NEAR THE PC OF RANCHO DR.				
19	7C01 32S4	634.118	F N D	RIVET AND SQUARE ALUMINUM PLATE IN TOP OF CURB, NORTHEAST CORNER OF CHARLESTON BLVD. AND SHETLAND RD. NEAR THE PC OF CHARLESTON BLVD.	32	8C01 33SSE6 1998	621.954	S E T	RIVET AND ROUND ALUMINUM PLATE IN TOP OF CURB, NORTHWEST CORNER OF CHARLESTON BLVD. AND GRAND CENTRAL PKWY. NEAR THE PC OF CHARLESTON BLVD.				
20	7C01 32SSW6	639.739	F N D	CITY OF LAS VEGAS PIN AND PLATE IN TOP OF CURB, NORTHEAST CORNER OF CHARLESTON BLVD. AND CAMPBELL DR. 44' EAST OF THE PC OF CHARLESTON BLVD., "NOT STAMPED"	33	7C01 19NNW6 1997	667.342	S E T	RIVET AND ROUND ALUMINUM PLATE IN TOP OF CURB, SOUTHEAST CORNER OF RANCHO DR. AND CAREY AVE. NEAR THE PC OF RANCHO DR.				
21	7C01 31SES	646.322	F N D	RIVET AND SQUARE ALUMINUM PLATE IN TOP OF CURB, NORTHWEST CORNER OF CHARLESTON BLVD. AND DOUGLAS DR.	34	7C01 33SSE6 1997	622.282	S E T	RIVET AND ROUND ALUMINUM PLATE IN TOP OF CURB, CHARLESTON BLVD. AT THE U.P.R.R. TRACKS UNDERPASS NORTHWEST CORNER OF A HEADWALL.				
22	7C01 31SSE6	656.058	F N D	RIVET AND SQUARE ALUMINUM PLATE IN TOP OF CURB, NORTHEAST CORNER OF CHARLESTON BLVD. AND VALLEY VIEW BLVD. NEAR THE PC OF CHARLESTON BLVD.	35	CNLV 01-19E4	648.648	F N D	CITY OF NORTH LAS VEGAS RIVET AND PLATE IN TOP OF CURB, NORTHWEST CORNER OF CORAN LN. AND ALLEN LN.				
23	7C01 31S4	661.258	F N D	RIVET AND SQUARE ALUMINUM PLATE IN TOP OF CURB, NORTHEAST CORNER OF CHARLESTON BLVD. AND BEDFORD RD. NEAR THE PC OF CHARLESTON BLVD.	CLARK COUNTY VERTICAL CONTROL v.2003 CLARK COUNTY SURVEYOR'S OFFICE 5051 SOUTH PARADISE ROAD LAS VEGAS, NEVADA 89119 (702) 455-0640								
24	7C01 31SWS	670.294	F N D	RIVET AND SQUARE ALUMINUM PLATE IN TOP OF CURB, NORTHEAST CORNER OF CHARLESTON BLVD. AND DECATUR BLVD. NEAR THE PC OF CHARLESTON BLVD.									
								CONVERSION FACTOR: METERS X $\left(\frac{3937}{1200}\right)$ = U.S. SURVEY FEET					
								REVISED 2003		SHEET 2 OF 3		20-61 SW	

No.	STATION	ELEVATION (METERS)	DESCRIPTION	No.	STATION	ELEVATION (METERS)	DESCRIPTION
36	2LV01 19N6	663.679	F N D CITY OF LAS VEGAS RIVET AND ALUMINUM PLATE IN TOP OF CURB, SOUTHWEST CORNER OF LAKE MEAD BLVD. AND RANCHO DR. NEAR 1/2 DELTA.	49			
37	0LV01 19S4	661.417	F N D CITY OF LAS VEGAS RIVET AND ALUMINUM PLATE IN TOP OF CURB, NORTHWEST CORNER OF VEGAS DR. AND VALLEY DR. NEAR THE PT OF VEGAS DR.	50			
38	0LV01 19SSE6	655.596	F N D CITY OF LAS VEGAS RIVET AND ALUMINUM PLATE IN TOP OF CURB, NORTHWEST CORNER OF VEGAS DR. AND MOUNTAIN TRAIL.	51			
39	2LV01 19W6	668.135	F N D CITY OF LAS VEGAS RIVET AND ALUMINUM PLATE IN TOP OF CURB, SOUTHWEST CORNER OF LAKE MEAD BLVD. AND MADELINE DR. NEAR 1/2 DELTA.	52			
40	2LV01 20SSE6	633.187	F N D CITY OF LAS VEGAS RIVET AND ALUMINUM PLATE IN TOP OF CURB, NORTH SIDE OF VEGAS DR. ±200' WEST OF MANHATTAN DR.	53			
41				54			
42				55			
43				56			
44				57			
45				58			
46				59			
47				CLARK COUNTY VERTICAL CONTROL v.2003 CLARK COUNTY SURVEYOR'S OFFICE 5051 SOUTH PARADISE ROAD LAS VEGAS, NEVADA 89119 (702) 455-0640			
48							
				CONVERSION FACTOR: METERS X $\left(\frac{3937}{1200}\right)$ = U.S. SURVEY FEET REVISED 2003 SHEET 3 OF 3 20-61 SW			