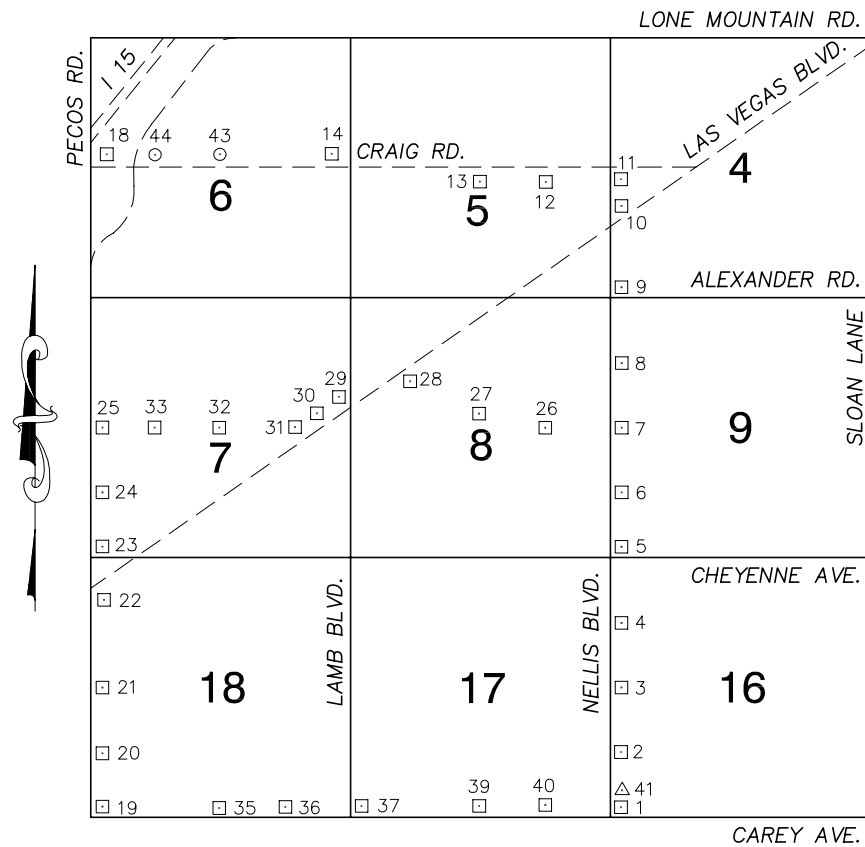


# Township 20 South, Range 62 East Northwest Quarter



NORTH AMERICAN VERTICAL  
DATUM OF 1988  
— ALL ELEVATIONS IN METERS —

No.	STATION	ELEVATION (METERS)	DESCRIPTION
1	6C02 16SWS	548.735	F 2" BRASS CAP REFERENCE MONUMENT IN TOP OF CURB N NORTHEAST CORNER OF NELLIS BLVD. AND CAREY AVE. D NEAR THE PC OF NELLIS BLVD.
2	6C02 16SWW6	550.652	F 2" BRASS CAP REFERENCE MONUMENT IN TOP OF CURB N NORTHEAST CORNER OF NELLIS BLVD. AND CARTER AVE D ALIGNMENT, AT 2584 NELLIS BLVD.
3	6C02 16W4	553.875	F 2" BRASS CAP REFERENCE MONUMENT IN TOP OF CURB N NORTHEAST CORNER OF NELLIS BLVD. AND ALTO AVE. D NEAR THE PC OF NELLIS BLVD.
4	6C02 16NWW6	557.089	F 2" BRASS CAP REFERENCE MONUMENT IN TOP OF CURB N NORTHEAST CORNER OF NELLIS BLVD. AND CECILE AVE. D
5	6C02 9SWS	557.498	F 2" BRASS CAP REFERENCE MONUMENT IN TOP OF CURB N NORTHEAST CORNER OF NELLIS BLVD. AND CHEYENNE D AVE. NEAR THE PC OF NELLIS BLVD.
6	6C02 9SWW6	559.248	F 2" BRASS CAP REFERENCE MONUMENT IN TOP OF CURB N NORTHEAST CORNER RP FOR S 1/6, SEC 8/9, T.20S., D R.62E.
7	6C02 9W4	560.907	F 2" BRASS CAP REFERENCE MONUMENT IN TOP OF CURB N NORTHEAST CORNER OF NELLIS BLVD. AND GOWAN RD. D ("I" ST.) NEAR 1/2 DELTA.
8	6C02 9NWW6	562.645	F 2" BRASS CAP REFERENCE MONUMENT IN TOP OF CURB N NORTHEAST CORNER RP FOR N 1/16, SEC. 8/9 T.20S., D R.62E.
9	6C02 4SWS	564.950	F 2" BRASS CAP REFERENCE MONUMENT IN TOP OF CURB N NORTHEAST CORNER OF NELLIS BLVD. AND ALEXANDER D RD.
10	6C02 4SWW6	567.886	F RIVET AND SQUARE ALUMINUM PLATE IN TOP OF CURB N NORTHEAST CORNER OF NELLIS BLVD. AND LAS VEGAS D BLVD. NEAR THE PC OF NELLIS BLVD.
11	6C02 4W4	570.251	F RIVET AND SQUARE ALUMINUM PLATE IN TOP OF CURB N SOUTHEAST CORNER OF NELLIS BLVD. AND CRAIG RD. D 30' SOUTH OF PC OF NELLIS BLVD.

## CLARK COUNTY VERTICAL CONTROL v.2003

CLARK COUNTY SURVEYOR'S OFFICE  
5051 SOUTH PARADISE ROAD  
LAS VEGAS, NEVADA 89119  
(702) 455-0640

CONVERSION FACTOR:

METERS X  $\left(\frac{3937}{1200}\right)$  = U.S. SURVEY FEET

REVISED 2003

SHEET  
1 OF 3

20-62  
NW

No.	STATION	ELEVATION (METERS)	DESCRIPTION	No.	STATION	ELEVATION (METERS)	DESCRIPTION
12	6C02 5E6	570.218	F N D RIVET AND SQUARE ALUMINUM PLATE IN TOP OF CURB OF A PLANTER CORNER, SOUTHEAST CORNER OF CRAIG RD. AND LAMONT ST. NEAR THE PC OF CRAIG RD.	25	7C02 7W4	570.920	F N D RIVET AND SQUARE ALUMINUM PLATE IN TOP OF CURB NORTHEAST CORNER OF PECOS RD. AND GOWAN RD. NEAR THE PC OF PECOS RD.
13	6C02 5C4	570.781	F N D RIVER AND SQUARE ALUMINUM PLATE IN TOP OF CURB OF A PLANTER CORNER, SOUTHEAST CORNER OF CRAIG RD. AND PUEBLA ST. NEAR THE PC OF CRAIG RD.	26	7C02 8E6	561.692	F N D RIVET AND SQUARE ALUMINUM PLATE IN TOP OF CURB SOUTHWEST CORNER OF GOWAN RD, AND LAMONT ST. NEAR THE PC OF GOWAN RD.
14	6C02 6E4	578.109	F N D RIVET AND SQUARE ALUMINUM PLATE IN TOP OF CURB IN THE NORTHWEST CORNER OF CRAIG RD. AND LAMB BLVD. NEAR THE PC OF CRAIG RD.	27	7C02 8C4	565.807	F N D RIVET AND SQUARE ALUMINUM PLATE IN TOP OF SOUTH END OF WEST CONCRETE WALL OF BOX CULVERT ON MARION DR. 225' NORTH OF GOWAN RD.
15			LOST 2003	28	7C02 8NW6	566.832	F N D RIVET AND SQUARE ALUMINUM PLATE IN TOP OF SOUTHEAST WING WALL OF BOX CULVERT AT LAS VEGAS BLVD. 1200' SOUTHWEST OF PUEBLA ST.
16			LOST 2003	29	7C02 8W4	568.406	F N D RIVET AND SQUARE ALUMINUM PLATE IN TOP OF CURB NORTHWEST CORNER OF LAS VEGAS BLVD. AND LAMB BLVD. NEAR THE PC OF LAS VEGAS BLVD.
17			LOST 2003	30	7C02 7E4	571.024	F N D RIVET AND SQUARE ALUMINUM PLATE IN TOP OF CURB NORTH SIDE OF LAS VEGAS BLVD. 470' SOUTHWEST OF LAMB BLVD.
18	6C02 6W4	582.799	F N D RIVET AND SQUARE ALUMINUM PLATE IN TOP OF CURB NORTHWEST CORNER OF CRAIG RD. AND PECOS RD. NEAR THE PC OF CRAIG RD.	31	7C02 7E6	574.153	F N D RIVET AND SQUARE ALUMINUM PLATE IN TOP OF CURB NORTHWEST CORNER OF GOWAN RD. AND LINCOLN RD. NEAR THE PC OF GOWAN RD.
19	NLV 2 13 10	557.881	F N D BRASS CAP IN CONCRETE, JUST EAST OF SIDEWALK IN NORTHEAST CORNER OF PECOS RD. AND CAREY AVE. NEAR THE PC OF PECOS RD., STAMPED "NLV BM 2 13 10".	32	7C02 7C4	569.146	F N D RIVET AND SQUARE ALUMINUM PLATE IN TOP OF CURB IN THE NORTHEAST CORNER OF GOWAN RD. AND WALNUT RD. NEAR THE PC OF GOWAN RD.
20	7C02 18SWW6	559.921	F N D RIVET AND SQUARE ALUMINUM PLATE IN TOP OF CURB NORTHEAST CORNER OF PECOS RD. AND CARTIER AVE. 30' NORTH OF CARTIER AVE.	33	7C02 7W6	569.365	F N D RIVET AND SQUARE ALUMINUM PLATE NORTHWEST CORNER OF GOWAN RD. AND SANDY LN. AT A METAL LIGHT POLE.
21	7C02 18W4	562.258	F N D RIVET AND SQUARE ALUMINUM PLATE IN TOP OF CURB NORTHEAST CORNER OF PECOS RD. AND ALTO AVE. NEAR THE PC OF PECOS RD.	34			LOST 2003
22	7C02 18NWW6	564.440	F N D RIVET AND SQUARE ALUMINUM PLATE IN TOP OF CURB SOUTHEAST CORNER OF PECOS RD. AND LAS VEGAS BLVD. NEAR THE PC OF PECOS RD.	35	3C02 18S4	556.030	F N D RIVET AND SQUARE ALUMINUM PLATE IN TOP OF CURB NORTHWEST CORNER OF CAREY AVE. AND WALNUT RD. NEAR THE PC OF CAREY AVE.
23	7C02 7SWS	566.178	F N D RIVET AND SQUARE ALUMINUM PLATE IN TOP OF CURB NORTHEAST CORNER OF PECOS RD. AND CHEYENNE AVE. NEAR THE PC OF PECOS RD.	<b>CLARK COUNTY VERTICAL CONTROL v.2003</b>  CLARK COUNTY SURVEYOR'S OFFICE 5051 SOUTH PARADISE ROAD LAS VEGAS, NEVADA 89119 (702) 455-0640			
24	7C02 7SWW6	569.180	F N D RIVET AND SQUARE ALUMINUM PLATE IN TOP OF CURB NORTHEAST CORNER OF PECOS RD. AND COLTON AVE. NEAR THE PC OF PECOS RD.				
				CONVERSION FACTOR: METERS X $\left(\frac{3937}{1200}\right)$ = U.S. SURVEY FEET  REVISED 2003      SHEET 2 OF 3 <b>20-62 NW</b>			

No.	STATION	ELEVATION (METERS)	DESCRIPTION	No.	STATION	ELEVATION (METERS)	DESCRIPTION
36	7C02 18SSE6	555.553	F N D RIVET AND SQUARE ALUMINUM PLATE IN TOP OF CURB NORTHEAST CORNER OF CAREY AVE. AND LINCOLN RD. NEAR THE PC OF CAREY.	49			
37	3C02 17SWS	553.967	F N D RIVET AND SQUARE ALUMINUM PLATE IN TOP OF CURB NORTHEAST CORNER OF CAREY AVE. AND LAMB BLVD. NEAR 1/2 DELTA.	50			
38			LOST 2003	51			
39	3C02 17S4	551.059	F N D RIVET AND SQUARE ALUMINUM PLATE IN TOP OF CURB NORTHWEST CORNER OF CAREY AVE. AND MARION DR. NEAR 1/2 DELTA.	52			
40	3C02 17SSE6	549.565	F N D RIVET AND SQUARE ALUMINUM PLATE IN TOP OF CURB NORTHWEST CORNER OF CAREY AVE. AND LAMONT ST. NEAR THE PC OF LAMONT ST.	53			
41	815 GIS	548.778	F N D CLARK COUNTY GIS BRASS CAP IN TOP OF CURB NORTHEAST CORNER OF NELLIS BLVD. AND CAREY AVE.	54			
42			LOST 2003	55			
43	7C02 6C4 1997	579.461	S E T RIVET AND ROUND ALUMINUM PLATE NORTHEAST CORNER OF CRAIG RD. AND WALNUT RD. NEAR THE PC OF CRAIG RD.	56			
44	7C02 6W6 1997	581.270	S E T RIVET AND ROUND ALUMINUM PLATE IN TOP OF CURB NORTH SIDE OF CRAIG RD. NEAR THE WEST PROPERTY LINE OF 3940 CRAIG RD. IN FRONT OF FIRE HYDRANT.	57			
45				58			
46				59			
47				<b>CLARK COUNTY VERTICAL CONTROL v.2003</b>  CLARK COUNTY SURVEYOR'S OFFICE 5051 SOUTH PARADISE ROAD LAS VEGAS, NEVADA 89119 (702) 455-0640			
48							
				CONVERSION FACTOR: METERS X $\left(\frac{3937}{1200}\right)$ = U.S. SURVEY FEET  REVISED 2003      SHEET 3 OF 3 <b>20-62 NW</b>			