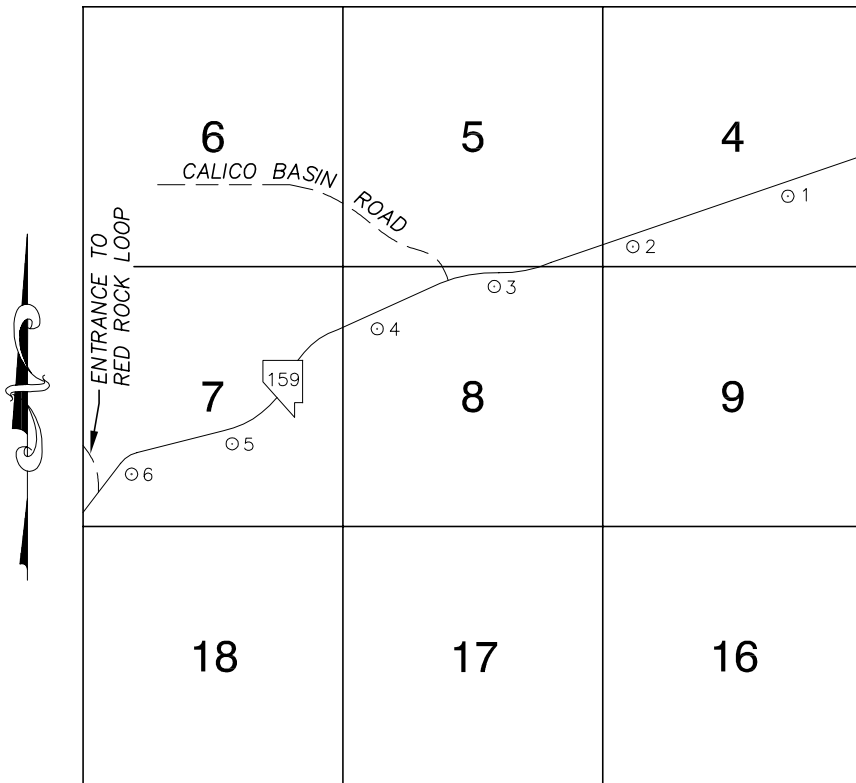
CLARK COUNTY VERTICAL CONTROL v.2003

Township 21 South, Range 59 East Northwest Quarter



NORTH AMERICAN VERTICAL
DATUM OF 1988
- ALL ELEVATIONS IN METERS -

No.	STATION	ELEVATION (METERS)	DESCRIPTION
1	8C19 4SE6 1998	1008.116	FND NDOT CAP IN A CONCRETE MONUMENT, 50' SOUTH OF CENTERLINE OF STATE ROUTE 159, 1.6 MILES NORTHEAST OF THE INTERSECTION OF CALICO BASIN RD. AND S.R. 159. NDOT STATION 729+09.17
2	8C19 4SWS 1998	1035.511	FND NDOT CAP IN A CONCRETE MONUMENT, 75' SOUTH OF CENTERLINE OF STATE ROUTE 159, 0.8 MILES NORTHEAST OF THE INTERSECTION OF CALICO BASIN RD. AND S.R. 159. NDOT STATION 684+54.46
3	8C19 8N4 1998	1048.571	FND 2" ALUMINUM CAP IN A CONCRETE MONUMENT, 75' SOUTH OF CENTERLINE OF STATE ROUTE 159, 0.3 MILES NORTHEAST OF THE INTERSECTION OF CALICO BASIN RD. AND S.R. 159.
4	8C19 8NWW6 1998	1070.204	FND NDOT CAP IN A CONCRETE MONUMENT, 50' SOUTH OF CENTERLINE OF STATE ROUTE 159, 0.2 MILES SOUTH OF THE INTERSECTION OF CALICO BASIN RD. AND S.R. 159. NDOT STATION 631+69.75
5	8C19 7S6 1998	1097.037	FND NDOT CAP IN A CONCRETE MONUMENT, 50' SOUTH OF CENTERLINE OF STATE ROUTE 159, 0.7 MILES NORTHEAST OF RED ROCK SCENIC LOOP ENTRANCE. NDOT STATION 594+30.14
6	8C19 7SW6 1998	1117.470	FND NDOT CAP IN A CONCRETE MONUMENT, 50' SOUTH OF CENTERLINE OF STATE ROUTE 159, 0.2 MILES NORTHEAST OF RED ROCK SCENIC LOOP ENTRANCE. NDOT STATION 570+17.36
7			
8			
9			
10			
11			

CLARK COUNTY VERTICAL CONTROL v.2003

CLARK COUNTY SURVEYOR'S OFFICE
5051 SOUTH PARADISE ROAD
LAS VEGAS, NEVADA 89119
(702) 455-0640

CONVERSION FACTOR:
METERS X $\left(\frac{3937}{1200}\right)$ = U.S. SURVEY FEET

REVISED 2003

SHEET
1 OF 1

21-59
NW

Township 21 South, Range 59 East Southeast Quarter

FLAMINGO RD.

22	23	24
27	26	25
34	35	36

TROPICANA AVE

1

RUSSELL RD.

HUALAPAI WAY

SUNSET RD.

NORTH AMERICAN VERTICAL
DATUM OF 1988
- ALL ELEVATIONS IN METERS -

No.	STATION	ELEVATION (METERS)	DESCRIPTION
1	8C19 25NES 1998	833.988	RIVET AND ROUND ALUMINUM PLATE IN CONCRETE BASE OF A LVVWD AIR-VAC (VENT) IN THE SOUTHWEST QUADRANT OF HUALAPAI WAY AND TROPICANA AVE.
2			
3			
4			
5			
6			
7			
8			
9			
10			
11			

CLARK COUNTY VERTICAL CONTROL v.2003

CLARK COUNTY SURVEYOR'S OFFICE
5051 SOUTH PARADISE ROAD
LAS VEGAS, NEVADA 89119
(702) 455-0640

CONVERSION FACTOR:
METERS X $\left(\frac{3937}{1200}\right)$ = U.S. SURVEY FEET

REVISED 2003

SHEET
1 OF 1

21-59
SE