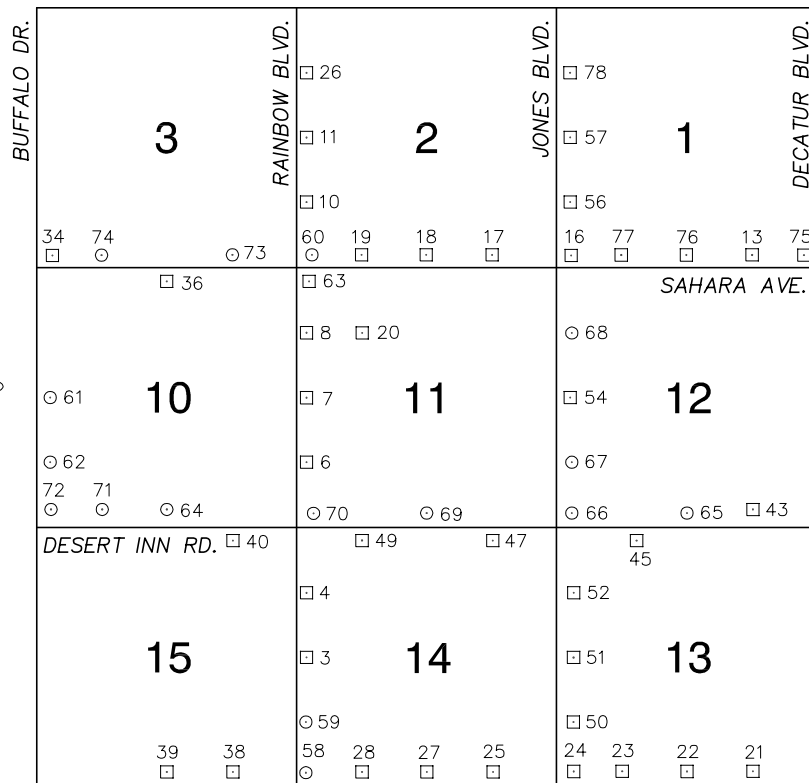


# Township 21 South, Range 60 East Northeast Quarter

CHARLESTON BLVD.



FLAMINGO RD.

NORTH AMERICAN VERTICAL  
DATUM OF 1988  
- ALL ELEVATIONS IN METERS -

No.	STATION	ELEVATION (METERS)	DESCRIPTION
1			LOST 2003
2			LOST 2003
3	7C10 14W4	720.710	F RIVET AND SQUARE ALUMINUM PLATE IN TOP OF CURB, N NORTHEAST CORNER OF RAINBOW BLVD. AND TWAIN AVE. D NEAR THE PC OF RAINBOW BLVD.
4	7C10 14NWW6	722.145	F RIVET AND SQUARE ALUMINUM PLATE IN TOP OF CURB, N NORTHEAST CORNER OF SPRING MOUNTAIN RD. AND D RAINBOW BLVD. NEAR THE PC OF RAINBOW BLVD.
5			LOST 2003
6	7C10 11SWW6	725.760	F RIVET AND SQUARE ALUMINUM PLATE IN TOP OF CURB, N NORTHEAST CORNER OF RAINBOW BLVD. AND PALMYRA D AVE. NEAR THE PC OF RAINBOW BLVD.
7	7C10 11W4	727.028	F RIVET AND SQUARE ALUMINUM PLATE IN TOP OF CURB, N NORTHEAST CORNER OF RAINBOW BLVD. AND EDNA AVE. D NEAR THE PC OF RAINBOW BLVD.
8	7C10 11NWW6	727.793	F RIVET AND SQUARE ALUMINUM PLATE IN TOP OF CURB, N NORTHEAST CORNER OF RAINBOW BLVD. AND ELDORA D ST. NEAR THE PC OF RAINBOW BLVD.
9			LOST 2003
10	7C10 2SWW6	731.250	F RIVET AND SQUARE ALUMINUM PLATE IN TOP OF CURB, N NORTHEAST CORNER OF RAINBOW BLVD. AND O'BANNON D DR. NEAR THE PC OF RAINBOW BLVD.
11	7C10 2W4	731.634	F RIVET AND SQUARE ALUMINUM PLATE IN TOP OF CURB, N NORTHEAST CORNER OF RAINBOW BLVD. AND OAKLEY D BLVD. NEAR THE PC OF RAINBOW BLVD.
CLARK COUNTY VERTICAL CONTROL v.2003			
CLARK COUNTY SURVEYOR'S OFFICE 5051 SOUTH PARADISE ROAD LAS VEGAS, NEVADA 89119 (702) 455-0640			CONVERSION FACTOR: METERS X $\left(\frac{3937}{1200}\right)$ = U.S. SURVEY FEET
REVISED 2003			SHEET 1 OF 4
			21-60 NE

No.	STATION	ELEVATION (METERS)	DESCRIPTION	No.	STATION	ELEVATION (METERS)	DESCRIPTION
12			LOST 2003	25	7C10 14SSE6	705.299	F N D RIVET AND SQUARE ALUMINUM PLATE IN TOP OF CURB, NORTHEAST CORNER OF FLAMINGO RD. AND EL CAMINO DR. NEAR THE PC OF FLAMINGO RD.
13	7C10 1SSE6	681.686	F N D RIVET AND SQUARE ALUMINUM PLATE IN TOP OF CURB, NORTHEAST CORNER OF SAHARA AVE. AND EDMOND ST. NEAR THE PC OF SAHARA AVE.	26	7C10 2NWW6	732.354	F N D RIVET AND SQUARE ALUMINUM PLATE IN TOP OF CURB, NORTHEAST CORNER OF RAINBOW BLVD. AND DEL REY AVE. NEAR THE PC OF RAINBOW BLVD.
14			LOST 2003	27	7C10 14S4	707.847	F N D RIVET AND SQUARE ALUMINUM PLATE IN TOP OF CURB, NORTHEAST CORNER OF TORREY PINES DR. AND FLAMINGO RD. NEAR THE PC OF FLAMINGO RD.
15			LOST 2003	28	7C10 14SSW6	712.975	F N D RIVET AND SQUARE ALUMINUM PLATE IN TOP OF CURB, NORTHEAST CORNER OF FLAMINGO RD. AND REDWOOD ST. NEAR THE PC OF FLAMINGO RD.
16	7C10 1SWS	698.545	F N D RIVET AND SQUARE ALUMINUM PLATE IN TOP OF CURB, NORTHEAST CORNER OF SAHARA AVE. AND JONES BLVD. NEAR THE PC OF SAHARA AVE.	29			LOST 2003
17	7C10 2SSE6	704.337	F N D RIVET AND SQUARE ALUMINUM PLATE IN TOP OF CURB, NORTHEAST CORNER OF SAHARA AVE. AND CHUCK LENZIE CT./EL CAMINO RD. NEAR THE PC OF SAHARA AVE.	30			LOST 2003
18	7C10 2S4	712.247	F N D RIVET AND SQUARE ALUMINUM PLATE IN TOP OF CURB, NORTHWEST CORNER OF TORREY PINES DR. AND SAHARA AVE. NEAR THE PC OF SAHARA AVE.	31			LOST 2003
19	7C10 2SSW6	719.751	F N D RIVET AND SQUARE ALUMINUM PLATE IN TOP OF CURB, NORTHEAST CORNER OF SAHARA AVE. AND REDWOOD ST. NEAR THE PC OF SAHARA AVE.	32			LOST 2003
20	7C10 11NW6	719.776	F N D RIVET AND SQUARE ALUMINUM PLATE IN TOP OF CURB, NORTHWEST CORNER OF ELDORA AVE. AND REDWOOD ST. NEAR THE PC OF REDWOOD ST.	33			LOST 2003
21	7C10 13SSE6	691.907	F N D RIVET AND SQUARE ALUMINUM PLATE IN TOP OF CURB, NORTHEAST CORNER OF FLAMINGO RD. AND EDMOND ST. NEAR THE PC OF FLAMINGO RD.	34	2C10 3SWS	767.596	F N D RIVET AND SQUARE ALUMINUM PLATE IN TOP OF CURB, NORTHEAST CORNER OF SAHARA AVE. AND BUFFALO DR. NEAR THE PC OF SAHARA AVE.
22	7C10 13S4	695.154	F N D RIVET AND SQUARE ALUMINUM PLATE IN TOP OF CURB, NORTHEAST CORNER OF FLAMINGO RD. AND LINDELL RD. NEAR THE PC OF FLAMINGO RD.	35			LOST 2003
23	7C10 13SSW6	700.012	F N D RIVET AND SQUARE ALUMINUM PLATE IN TOP OF CURB, NORTHEAST CORNER OF FLAMINGO RD. AND DUNEVILLE ST. NEAR THE PC OF FLAMINGO RD.	<b>CLARK COUNTY VERTICAL CONTROL v.2003</b>  CLARK COUNTY SURVEYOR'S OFFICE 5051 SOUTH PARADISE ROAD LAS VEGAS, NEVADA 89119 (702) 455-0640			
24	7C10 13SWS	702.264	F N D RIVET AND SQUARE ALUMINUM PLATE IN TOP OF CURB, NORTHEAST CORNER OF FLAMINGO RD. AND JONES BLVD. NEAR THE PC OF FLAMINGO RD.				
				CONVERSION FACTOR: METERS X $\left(\frac{3937}{1200}\right)$ = U.S. SURVEY FEET  REVISED 2003      SHEET 2 OF 4 <b>21-60 NE</b>			

No.	STATION	ELEVATION (METERS)	DESCRIPTION	No.	STATION	ELEVATION (METERS)	DESCRIPTION
36	7C10 10N4	747.956	F N D RIVET AND SQUARE ALUMINUM PLATE NORTHEAST CORNER OF FIRE HYDRANT BASE, 400' SOUTH OF SAHARA AVE. WEST SIDE OF TENAYA WAY.	49	7C10 14NNW6	715.208	F N D RIVET AND SQUARE ALUMINUM PLATE IN TOP OF CURB, SOUTH SIDE OF DESERT INN RD. NEAR REDWOOD ST. ALIGNMENT.
37			LOST 2003	50	7C10 13SWW6	701.948	F N D 2" DOME HEAD BRASS CAP REFERENCE MONUMENT IN TOP OF CURB, NORTHEAST CORNER OF JONES BLVD. AND VIKING RD. NEAR THE PC OF JONES BLVD.
38	7C10 15SSE6	724.320	F N D RIVET AND SQUARE ALUMINUM PLATE IN TOP OF CURB, NORTHEAST CORNER OF FLAMINGO RD. AND SANDALWOOD DR. NEAR THE PC OF FLAMINGO RD.	51	7C10 13W4	700.218	F N D 2" DOME HEAD BRASS CAP REFERENCE MONUMENT IN TOP OF CURB, NORTHEAST CORNER OF JONES BLVD. AND TWAIN AVE. NEAR THE PC OF JONES BLVD.
39	7C10 15S4	731.928	F N D RIVET AND SQUARE ALUMINUM PLATE IN TOP OF CURB, NORTHEAST CORNER OF FLAMINGO RD. AND TENAYA WAY NEAR THE PC OF FLAMINGO RD.	52	7C10 13NWW6	699.504	F N D RIVET AND SQUARE ALUMINUM PLATE IN TOP OF CURB, NORTHEAST CORNER OF JONES BLVD. AND SPRING MOUNTAIN RD. NEAR THE PC OF JONES BLVD.
40	7C10 15NNE6	731.964	F N D RIVET AND SQUARE ALUMINUM PLATE IN TOP OF CURB, SOUTHEAST CORNER OF DESERT INN RD. AND MONTESSOURI ST. NEAR THE PC OF DESERT INN RD.	53			LOST 2003
41			LOST 2003	54	7C10 12W4	698.070	F N D RIVET AND SQUARE ALUMINUM PLATE IN TOP OF CURB, NORTHEAST CORNER OF JONES BLVD. AND EDNA AVE. NEAR THE PC OF JONES BLVD.
42			LOST 2003	55			LOST 2003
43	7C10 12SSE6	680.444	F N D RIVET AND SQUARE ALUMINUM PLATE IN TOP OF CURB, NORTHEAST CORNER OF DESERT INN RD. AND MOUNTAIN SPRINGS RD. NEAR THE PC OF DESERT INN RD.	56	7C10 1SWW6	698.402	F N D RIVET AND SQUARE ALUMINUM PLATE IN TOP OF CURB, NORTHEAST CORNER OF JONES BLVD. AND O'BANNON DR. NEAR THE PC OF JONES BLVD.
44			LOST 2003	57	7C10 1W4	699.331	F N D RIVET AND SQUARE ALUMINUM PLATE IN TOP OF CURB, NORTHEAST CORNER OF JONES BLVD. AND OAKLEY BLVD. NEAR THE PC OF JONES BLVD.
45	7C10 13NNW6	695.572	F N D RIVET AND SQUARE ALUMINUM PLATE IN TOP OF CURB, SOUTHEAST CORNER OF DESERT INN RD. AND A CUL- DE-SAC, 200' EAST OF DUNEVILLE ST.	58	7C10 14SWS 1997	718.235	S E T RIVET AND ROUND ALUMINUM PLATE IN TOP OF CURB, NORTHEAST CORNER OF RAINBOW BLVD. AND FLAMINGO RD. NEAR THE PC OF RAINBOW BLVD.
46			LOST 2003	59	7C10 14SWW6 1997	718.343	S E T RIVET AND ROUND ALUMINUM PLATE IN TOP OF CURB, NORTHEAST CORNER OF RAINBOW BLVD. AND ENDORA DR. NEAR THE PC OF RAINBOW BLVD.
47	7C10 14NNE6	701.561	F N D RIVET AND SQUARE ALUMINUM PLATE IN TOP OF CURB, SOUTHEAST CORNER OF DESERT INN RD. AND EL CAMINO RD. NEAR THE PC OF DESERT INN RD.	<b>CLARK COUNTY VERTICAL CONTROL v.2003</b>  CLARK COUNTY SURVEYOR'S OFFICE 5051 SOUTH PARADISE ROAD LAS VEGAS, NEVADA 89119 (702) 455-0640			
48			LOST 2003				
				CONVERSION FACTOR: METERS X $\left(\frac{3937}{1200}\right)$ = U.S. SURVEY FEET  REVISED 2003      SHEET 3 OF 4 <b>21-60 NE</b>			

No.	STATION	ELEVATION (METERS)	DESCRIPTION	No.	STATION	ELEVATION (METERS)	DESCRIPTION
60	7C10 2SWS 1997	729.274	S E T RIVET AND ROUND ALUMINUM PLATE IN TOP OF CURB, NORTHEAST CORNER OF RAINBOW BLVD. AND SAHARA AVE. NEAR THE PC OF RAINBOW BLVD.	73	0LV10 3SSE6	737.796	F N D CITY OF LAS VEGAS PIN AND PLATE IN TOP OF CURB, NORTHEAST CORNER OF SAHARA AVE. AND MONTESSOURI ST. NEAR THE PC OF SAHARA AVE., "NOT STAMPED".
61	8C10 10W4 1998	765.885	S E T RIVET AND ROUND ALUMINUM PLATE IN TOP OF CURB, NORTHEAST CORNER OF BUFFALO DR. AND EDNA AVE. NEAR THE PC OF EDNA AVE.	74	0LV10 3SSW6	756.589	F N D CITY OF LAS VEGAS PIN AND PLATE IN TOP OF CURB, NORTHEAST CORNER SAHARA AVE. AND PIONEER WAY NEAR THE PC OF SAHARA AVE., "NOT STAMPED".
62	8C10 10SWW6 1998	763.520	S E T RIVET AND ROUND ALUMINUM PLATE IN TOP OF CURB, SOUTHEAST CORNER OF BUFFALO DR. AND PALMYRA AVE. 8' SOUTH OF THE PC OF BUFFALO DR.	75	0LV10 1SES	677.364	F N D NDOT BRASS CAP IN TOP OF CURB. NORTHWEST CORNER OF SAHARA AVE. AND DECATUR BLVD., STAMPED "STA A3 18+85.62"
63	C1011D2	728.623	F N D CITY OF LAS VEGAS PIN AND PLATE IN TOP OF CURB, SOUTHEAST CORNER OF SAHARA AVE AND RAINBOW BLVD. NEAR THE PC OF RAINBOW BLVD.	76	0LV10 1S4	686.974	F N D CITY OF LAS VEGAS PIN AND PLATE IN TOP OF CURB, NORTHEAST CORNER SAHARA AVE. AND LINDELL RD.
64	0C10 10S4 2000	740.984	S E T RIVET AND ROUND ALUMINUM PLATE IN TOP OF CURB, NORTHEAST CORNER OF DESERT INN RD. AND TENAYA WAY NEAR THE PC OF DESERT INN RD.	77	2LV10 1SSW6	694.656	F N D CITY OF LAS VEGAS PIN AND PLATE IN TOP OF CURB, NORTHWEST CORNER OF SAHARA AVE. AND DUNEVILLE RD. NEAR THE PC OF SAHARA AVE.
65	0C10 12S4 2000	685.779	S E T RIVET AND ROUND ALUMINUM PLATE IN TOP OF CURB, NORTHEAST CORNER OF DESERT INN RD. AND LINDELL RD. NEAR THE PC OF DESERT INN RD.	78	CLV10 1NWW6	694.961	F N D CITY OF LAS VEGAS PIN AND PLATE IN TOP OF CURB, EAST SIDE OF JONES BLVD., BETWEEN TWO DRIVEWAYS AT ADDRESS 1400 SO. JONES BLVD.
66	0C10 12SWS 2000	698.993	S E T RIVET AND ROUND ALUMINUM PLATE IN TOP OF CURB, NORTHEAST CORNER OF DESERT INN RD. AND JONES BLVD. NEAR THE PC OF JONES BLVD.	79			
67	0C10 12SWW6 2000	698.177	S E T RIVET AND ROUND ALUMINUM PLATE IN TOP OF CURB, NORTHEAST CORNER OF JONES BLVD. AND PALMYRA AVE. NEAR THE PC OF JONES BLVD.	80			
68	0C10 12NWW6 2000	698.192	S E T RIVET AND ROUND ALUMINUM PLATE IN TOP OF CURB, NORTHEAST CORNER OF JONES BLVD. AND ELDORA AVE. NEAR THE PC OF JONES BLVD.	81			
69	0C10 11S4 2000	707.935	S E T RIVET AND ROUND ALUMINUM PLATE IN TOP OF CURB, NORTHEAST CORNER OF DESERT INN RD. AND TORREY PINES DR. NEAR THE PC OF DESERT INN RD.	82			
70	0C10 11SWS 2000	722.975	S E T RIVET AND ROUND ALUMINUM PLATE IN TOP OF CURB, NORTHEAST CORNER OF DESERT INN RD. AND RAINBOW BLVD. NEAR THE PC OF DESERT INN RD.	83			
71	0C10 10SSW6 2000	751.047	S E T RIVET AND ROUND ALUMINUM PLATE IN TOP OF CURB, NORTH SIDE OF DESERT INN RD. NEAR THE ALIGNMENT PIONEER WAY. 3' SOUTH OF A STREET LIGHT.	<b>CLARK COUNTY VERTICAL CONTROL v.2003</b>  CLARK COUNTY SURVEYOR'S OFFICE 5051 SOUTH PARADISE ROAD LAS VEGAS, NEVADA 89119 (702) 455-0640			
72	0C10 10SWS 2000	759.891	S E T RIVET AND ROUND ALUMINUM PLATE IN TOP OF CURB, NORTHEAST CORNER OF DESERT INN RD. AND BUFFALO DR. NEAR THE PC OF DESERT INN RD.				
				CONVERSION FACTOR: METERS X $\left(\frac{3937}{1200}\right)$ = U.S. SURVEY FEET  REVISED 2003      SHEET 4 OF 4 <b>21-60 NE</b>			