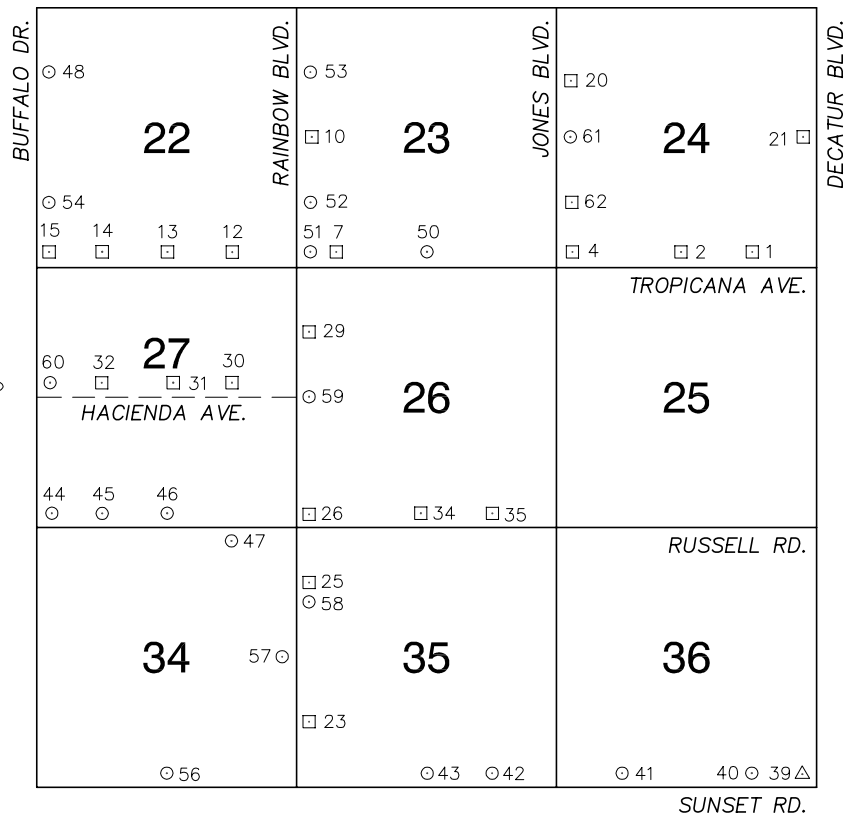


# Township 21 South, Range 60 East Southeast Quarter

FLAMINGO RD.



NORTH AMERICAN VERTICAL  
DATUM OF 1988  
— ALL ELEVATIONS IN METERS —

No.	STATION	ELEVATION (METERS)	DESCRIPTION
1	7C10 24SSE6	693.711	F N D RIVET AND SQUARE ALUMINUM PLATE IN TOP OF SOUTHWEST CONCRETE BASE FOR POWER COMPANY METAL TOWER, LOCATED 210' NORTH OF TROPICANA AVE. AT EDMOND ST.
2	7C10 24S4	693.853	F N D RIVET AND SQUARE ALUMINUM PLATE IN TOP OF CURB, NORTH SIDE OF TROPICANA AVE. 130' WEST OF LINDELL ST. ALIGNMENT.
3			LOST 2003
4	7C10 24SWS	702.346	F N D RIVET AND SQUARE ALUMINUM PLATE IN TOP OF CURB, NORTHEAST CORNER OF TROPICANA AVE. AND JONES BLVD. NEAR THE PC OF TROPICANA AVE.
5			LOST 2003
6			LOST 2003
7	7C10 23SSW6	713.761	F N D RIVET AND SQUARE ALUMINUM PLATE IN TOP OF CURB, NORTHWEST CORNER OF TROPICANA AVE. AND A BRIDGE 0.2 MILES EAST OF RAINBOW BLVD.
8			LOST 2003
9			LOST 2003
10	7C10 23W4	716.941	F N D RIVET AND SQUARE ALUMINUM PLATE IN TOP OF CURB, EAST SIDE OF RAINBOW BLVD. 0.5 MILES NORTH OF TROPICANA AVE.
11			LOST 2003

## CLARK COUNTY VERTICAL CONTROL v.2003

CLARK COUNTY SURVEYOR'S OFFICE  
5051 SOUTH PARADISE ROAD  
LAS VEGAS, NEVADA 89119  
(702) 455-0640

CONVERSION FACTOR:  
METERS X  $\left(\frac{3937}{1200}\right)$  = U.S. SURVEY FEET  
REVISED 2003 SHEET 1 OF 4 21-60 SE

No.	STATION	ELEVATION (METERS)	DESCRIPTION	No.	STATION	ELEVATION (METERS)	DESCRIPTION
12	7C10 22SSE6	721.359	F N D RIVET AND SQUARE ALUMINUM PLATE IN TOP OF CURB, NORTHEAST CORNER OF TROPICANA AVE. AND KNOLLWOOD DR. NEAR THE PC OF TROPICANA AVE.	25	2C10 35NWW6	735.492	F N D RIVET AND SQUARE ALUMINUM PLATE IN CONCRETE MONUMENT, NORTHEAST CORNER OF RAINBOW BLVD. AND OQUENDO RD. 50' EAST AND 30' NORTH OF PI.
13	7C10 22S4	727.837	F N D RIVET AND SQUARE ALUMINUM PLATE IN TOP OF CURB, NORTHEAST CORNER OF TROPICANA AVE. AND TENAYA WAY NEAR THE PC OF TROPICANA AVE.	26	4C10 26SWS	731.197	F N D RIVET AND SQUARE ALUMINUM PLATE IN 10'X8' CONCRETE BASE OF LARGE METAL POWER POLE, NORTHEAST CORNER OF RAINBOW BLVD. AND RUSSELL RD.
14	7C10 22SSW6	734.800	F N D RIVET AND SQUARE ALUMINUM PLATE IN TOP OF CURB, NORTHEAST CORNER OF TROPICANA AVE. AND HARTFIELD LN. NEAR THE PC OF TROPICANA AVE.	27			LOST 2003
15	7C10 22SWS	740.312	F N D RIVET AND SQUARE ALUMINUM PLATE IN TOP OF CURB, NORTHEAST CORNER OF TROPICANA AVE. AND BUFFALO DR. 21' EAST OF THE PC OF TROPICANA AVE.	28			LOST 2003
16			LOST 2003	29	2C10 26NWW6	721.900	F N D RIVET AND SQUARE ALUMINUM PLATE IN AN ELECTRICAL TRANSFORMER PAD, 100' SOUTH OF ENTRANCE TO "THE TRAILS" APARTMENTS, EAST SIDE OF RAINBOW.
17			LOST 2003	30	2C10 27E6	729.071	F N D RIVET AND SQUARE ALUMINUM PLATE IN TOP OF CURB, NORTHEAST CORNER OF HACIENDA AVE. AND MONTESSOURI ST.
18			LOST 2003	31	2C10 27C4	731.748	F N D RIVET AND SQUARE ALUMINUM PLATE IN TOP OF CURB, NORTHEAST CORNER OF HACIENDA AVE. AND SPANISH TRAIL LANE.
19			LOST 2003	32	2C10 27W6	735.145	F N D RIVET AND SQUARE ALUMINUM PLATE IN TOP OF CURB, NORTH SIDE OF HACIENDA AVE. AT PIONEER WAY.
20	7C10 24NWW6	698.099	F N D 2" DOME HEAD BRASS CAP REFERENCE MONUMENT IN TOP OF CURB, NORTHEAST CORNER OF JONES BLVD. AND GUNDERSON BLVD.	33			LOST 2003
21	7C10 24E4	688.189	F N D RIVET AND SQUARE ALUMINUM PLATE IN TOP OF CURB, NORTHWEST CORNER OF DECATUR BLVD. AND HARMON AVE. NEAR THE PC OF DECATUR BLVD.	34	4C10 26S4	723.227	F N D RIVET AND SQUARE ALUMINUM PLATE SOUTHEAST CORNER OF A CONCRETE ELECTRIC VAULT/TRANSFORMER PAD #(SW 2141) 50' NORTH OF RUSSELL RD. AND 110' WEST OF TORREY PINES WAY.
22			LOST 2003	35	4C10 26SSE6	718.192	F N D RIVET AND SQUARE ALUMINUM PLATE IN TOP OF CURB, NORTHWEST CORNER OF RUSSELL RD. AND EL CAMINO RD. NEAR THE PC OF RUSSELL RD.
23	2C10 35SWW6	743.844	F N D RIVET AND SQUARE ALUMINUM PLATE IN A CONCRETE MONUMENT, NORTHEAST CORNER OF RAINBOW BLVD. AND POST RD. 50' EAST AND 30' NORTH OF INTERSECTION.	<b>CLARK COUNTY VERTICAL CONTROL v.2003</b>  CLARK COUNTY SURVEYOR'S OFFICE 5051 SOUTH PARADISE ROAD LAS VEGAS, NEVADA 89119 (702) 455-0640			
24			LOST 2003				
				CONVERSION FACTOR: METERS X $\left(\frac{3937}{1200}\right)$ = U.S. SURVEY FEET			
				REVISED 02/14/2005		SHEET 2 OF 4	21-60 SE

No.	STATION	ELEVATION (METERS)	DESCRIPTION	No.	STATION	ELEVATION (METERS)	DESCRIPTION
36			LOST 2003	49			LOST 2003
37			LOST 2003	50	8C10 23S4 1998	710.732	S E T RIVET AND ROUND ALUMINUM PLATE IN TOP OF CURB, NORTHEAST CORNER OF TROPICANA AVE. AND TORREY PINES DR. NEAR THE PC OF TROPICANA AVE.
38			LOST 2003	51	7C10 23SWS 1997	716.672	F N D RIVET AND ROUND ALUMINUM PLATE IN TOP OF CURB, NORTHEAST CORNER OF RAINBOW BLVD. AND TROPICANA AVE. NEAR THE PC OF RAINBOW BLVD.
39	GIS 943	709.572	F N D 2" BRASS CAP IN A CONCRETE MONUMENT, NORTHWEST CORNER OF SUNSET RD. AND DECATUR BLVD. 75' WEST OF DECATUR BLVD. AND 100' NORTH OF SUNSET RD.	52	7C10 23SWW6 1997	718.457	S E T RIVET AND ROUND ALUMINUM PLATE IN TOP OF CURB, NORTHEAST CORNER OF RAINBOW BLVD. AND SPRING VALLEY PKWY. SOUTH NEAR THE PC OF RAINBOW BLVD.
40	7C10 36SSE6 1997	713.132	S E T RIVET AND ROUND ALUMINUM PLATE IN CONCRETE MONUMENT, NORTHEAST CORNER OF EDMOND ST. AND SUNSET RD. 45' EAST AND 70' NORTH OF THE INTERSECTION.	53	7C10 23NWW6 1997	716.594	S E T RIVET AND ROUND ALUMINUM PLATE IN TOP OF CURB, NORTHEAST CORNER OF RAINBOW BLVD. AND SPRING VALLEY PKWY. NORTH NEAR THE PC OF RAINBOW BLVD.
41	7C10 36SSW6 1997	722.002	S E T RIVET AND ROUND ALUMINUM PLATE IN CONCRETE MONUMENT, NORTHWEST CORNER OF SUNSET RD. AND DUNEVILLE ST. 50' WEST AND 50' NORTH OF THE INTERSECTION.	54	8C10 22SWW6 1998	742.090	S E T RIVET AND ROUND ALUMINUM PLATE IN TOP OF CURB, EAST SIDE OF BUFFALO DR. 0.25 MILES NORTH OF TROPICANA AVE. NEAR THE ALIGNMENT OF TOMPKINS AVE.
42	7C10 35SSE6 1997	730.903	S E T RIVET AND ROUND ALUMINUM PLATE IN CONCRETE MONUMENT, NORTHEAST CORNER OF SUNSET RD. AND EL CAMINO RD. 50' EAST AND 50' NORTH OF THE INTERSECTION.	55			LOST 2003
43	7C10 35S4 1997	735.891	S E T RIVET AND ROUND ALUMINUM PLATE IN CONCRETE MONUMENT, NORTHEAST CORNER OF SUNSET RD. AND TORREY PINES DR. 50' EAST AND 50' NORTH OF THE INTERSECTION.	56	8C10 34S4 1998	758.104	S E T RIVET AND ROUND ALUMINUM PLATE IN A LVVWD CONCRETE PAD. NORTHEAST CORNER OF RAINBOW RD. AND TENAYA WAY, 210' EAST AND 50' NORTH OF INTERSECTION.
44	8C10 27SWS 1998	747.111	S E T RIVET AND ROUND ALUMINUM PLATE IN TOP OF CURB, NORTHEAST CORNER OF BUFFALO DR. AND RUSSELL RD. NEAR THE PC OF BUFFALO DR.	57	7C10 34E4 1997	739.507	S E T RIVET AND ROUND ALUMINUM PLATE IN TOP OF CURB, NORTHWEST CORNER OF RAINBOW BLVD. AND PATRICK LN. NEAR THE PC OF PATRICK LN.
45	8C10 27SSW6 1998	743.776	S E T RIVET AND ROUND ALUMINUM PLATE IN TOP OF CURB, NORTH SIDE OF RUSSELL RD. AT PIONEER WAY, 9' EAST OF PIONEER ALIGNMENT, SOUTH OF A TELEPHONE MANHOLE IN THE SIDEWALK.	58	7C10 35NWW6 1997	735.809	S E T RIVET AND ROUND ALUMINUM PLATE IN A CONCRETE MONUMENT, SOUTHEAST CORNER OF RAINBOW BLVD. AND OQUENDO RD. NEAR A METAL POWER POLE.
46	8C10 27S4 1998	740.013	S E T RIVET AND ROUND ALUMINUM PLATE IN TOP OF CURB, NORTHEAST CORNER OF RUSSELL RD. AND TENAYA WAY NEAR THE PC OF RUSSELL RD.	59	7C10 26W4 1997	725.048	S E T RIVET AND ROUND ALUMINUM PLATE IN TOP OF CURB, NORTHEAST CORNER OF RAINBOW BLVD. AND HACIENDA AVE., NEAR THE PC OF RAINBOW BLVD.
47	8C10 34NNE6 1998	736.114	S E T RIVET AND ROUND ALUMINUM PLATE IN TOP OF CURB, SOUTHWEST CORNER OF RUSSELL RD. AND MONTESSOURI ST. NEAR THE PC OF RUSSELL RD.	<b>CLARK COUNTY VERTICAL CONTROL v.2003</b>  CLARK COUNTY SURVEYOR'S OFFICE 5051 SOUTH PARADISE ROAD LAS VEGAS, NEVADA 89119 (702) 455-0640			
48	8C10 22NWW6 1998	745.504	S E T RIVET AND ROUND ALUMINUM PLATE IN TOP OF CURB, EAST SIDE OF BUFFALO DR., 28' NORTH OF ROCHELLE AVE. ALIGNMENT.				
				CONVERSION FACTOR: METERS X $\left(\frac{3937}{1200}\right)$ = U.S. SURVEY FEET  REVISED 2003      SHEET 3 OF 4 <b>21-60 SE</b>			

No.	STATION	ELEVATION (METERS)	DESCRIPTION	No.	STATION	ELEVATION (METERS)	DESCRIPTION
60	8C10 27W4 1998	736.654	S E T RIVET AND ROUND ALUMINUM PLATE IN TOP OF CURB, NORTH SIDE OF HACIENDA AVE. 180' EAST OF THE PROJECTION OF BUFFALO DR.	73			
61	0C10 24W4 2000	702.241	S E T RIVET AND ROUND ALUMINUM PLATE IN TOP OF CURB, NORTHEAST CORNER OF JONES BLVD. AND HARMON AVE. NEAR THE PC OF JONES BLVD.	74			
62	0C10 24SWW6	700.182	F N D RIVET AND SQUARE ALUMINUM PLATE IN TOP OF CURB, EAST SIDE OF JONES BLVD. 0.25 MILES NORTH OF TROPICANA AVE. 75' NORTH OF THE FLAMINGO WASH.	75			
63				76			
64				77			
65				78			
66				79			
67				80			
68				81			
69				82			
70				83			
71				<b>CLARK COUNTY VERTICAL CONTROL v.2003</b> CLARK COUNTY SURVEYOR'S OFFICE 5051 SOUTH PARADISE ROAD LAS VEGAS, NEVADA 89119 (702) 455-0640			
72							
				CONVERSION FACTOR: METERS X $\left(\frac{3937}{1200}\right)$ = U.S. SURVEY FEET REVISED 2003      SHEET 4 OF 4 <b>21-60 SE</b>			