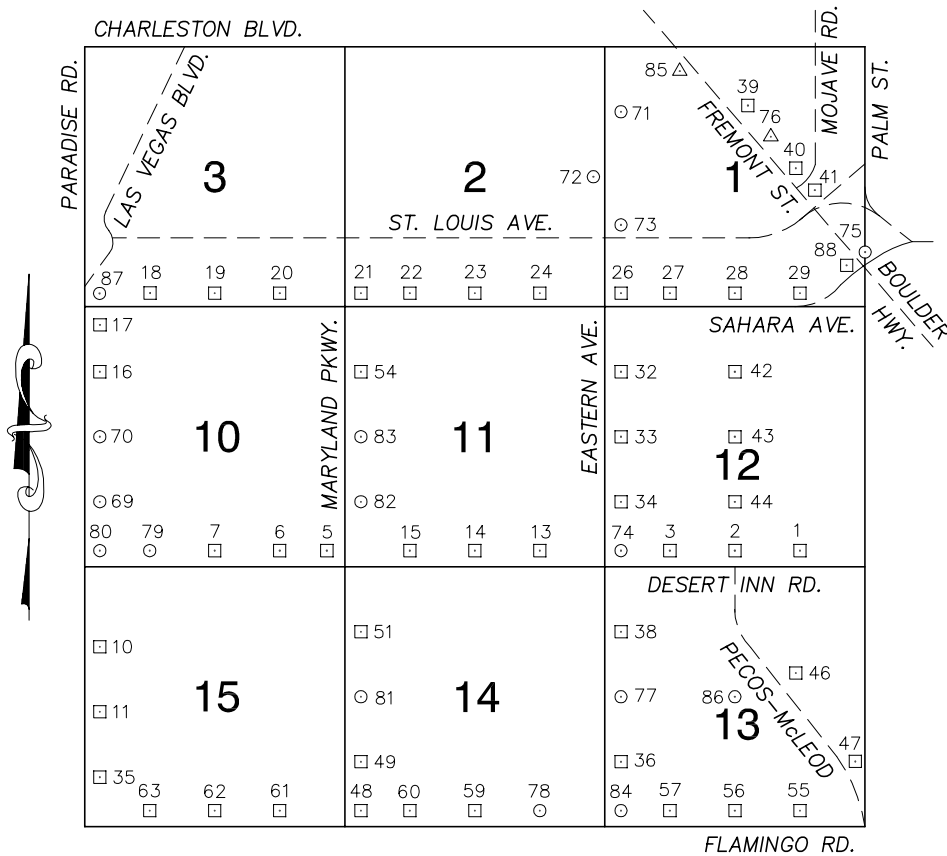


Township 21 South, Range 61 East Northeast Quarter



NORTH AMERICAN VERTICAL
DATUM OF 1988
— ALL ELEVATIONS IN METERS —

No.	STATION	ELEVATION (METERS)	DESCRIPTION
1	6C11 12SSE6	569.314	FND 2" DOME HEAD BRASS CAP REFERENCE MONUMENT IN TOP OF CURB, NORTHEAST CORNER OF DESERT INN RD. AND MOJAVE RD. NEAR THE PC OF DESERT INN RD. STAMPED "67.60 RLS 5835".
2	6C11 12S4	573.488	FND 2" DOME HEAD BRASS CAP REFERENCE MONUMENT IN TOP OF CURB, NORTHEAST CORNER OF DESERT INN RD. AND PECOS-McCLEOD INTERCONNECT. NEAR THE PC OF DESERT INN RD. STAMPED "88.71 RLS 5835".
3	6C11 12SSW6	577.127	FND 2" DOME HEAD BRASS CAP REFERENCE MONUMENT IN TOP OF CURB, NORTHEAST CORNER OF DESERT INN RD. AND TOPAZ ST. NEAR PC OF DESERT INN RD. STAMPED "71.11 RLS 5835".
4			LOST 2003
5	6C11 10SES	607.117	FND 2" DOME HEAD BRASS CAP REFERENCE MONUMENT IN TOP OF CURB, NORTHWEST CORNER OF DESERT INN RD. AND MARYLAND PKWY. NEAR 1/2 DELTA.
6	6C11 10SSE6	612.338	FND 2" DOME HEAD BRASS CAP REFERENCE MONUMENT IN TOP OF CURB, IN THE NORTHEAST CORNER OF DESERT INN RD. AND CAMBRIDGE ST. JUST WEST OF THE WEST DRIVEWAY GOING INTO 1020 DESERT INN RD.
7	6C11 10S4	616.856	FND 2" DOME HEAD BRASS CAP REFERENCE MONUMENT IN TOP OF CURB, NORTHEAST CORNER OF DESERT INN RD. AND JOE W. BROWN DR.—SWENSON ST. NEAR THE PC OF DESERT INN ROAD.
8			LOST 2003
9			LOST 2003
10	6C11 15NWW6	624.423	FND RIVET AND SQUARE ALUMINUM PLATE IN TOP OF CURB, NORTHEAST CORNER OF PARADISE RD. AND EDISON CIR. NEAR THE PC OF PARADISE RD.
11	6C11 15W4	625.212	FND RIVET AND SQUARE ALUMINUM PLATE IN TOP OF CURB, NORTHEAST CORNER OF PARADISE RD. AND SANDS AVE.—TWIN AVE, NEAR THE PC OF PARADISE RD.

CLARK COUNTY VERTICAL CONTROL v.2003

CLARK COUNTY SURVEYOR'S OFFICE
5051 SOUTH PARADISE ROAD
LAS VEGAS, NEVADA 89119
(702) 455-0640

CONVERSION FACTOR: METERS X $\left(\frac{3937}{1200}\right)$ = U.S. SURVEY FEET		
REVISED 2003	SHEET 1 OF 5	21-61 NE

No.	STATION	ELEVATION (METERS)	DESCRIPTION	No.	STATION	ELEVATION (METERS)	DESCRIPTION
12			LOST 2003	25			LOST 2003
13	6C11 11SSE6	588.248	F N D 2" DOME HEAD BRASS CAP REFERENCE MONUMENT, IN TOP OF CURB, NORTHEAST CORNER OF DESERT INN RD. AND BURNHAM AVE. NEAR THE PC OF DESERT INN RD.	26	6C11 1SWS	575.221	F N D RIVET AND SQUARE ALUMINUM PLATE IN TOP OF CURB, NORTHEAST CORNER OF SAHARA AVE. AND EASTERN AVE. NEAR THE PC OF SAHARA AVE.
14	6C11 11S4	592.074	F N D 2" DOME HEAD BRASS CAP REFERENCE MONUMENT, IN TOP OF CURB, NORTHEAST CORNER OF DESERT INN RD. AND PAWNEE DR. NEAR THE PC OF DESERT INN RD.	27	6C11 1SSW6	569.223	F N D RIVET AND SQUARE ALUMINUM PLATE IN TOP OF CURB, NORTHEAST CORNER OF SAHARA AVE. AND ATLANTIC ST. NEAR THE PC OF SAHARA AVE.
15	6C11 11SSW6	598.471	F N D 2" DOME HEAD BRASS CAP REFERENCE MONUMENT, IN TOP OF CURB, NORTHEAST CORNER OF DESERT INN RD. AND LA CANADA ST. NEAR THE PC OF DESERT INN RD.	28	6C11 1S4	564.893	F N D RIVET AND SQUARE ALUMINUM PLATE IN TOP OF CURB, NORTHEAST CORNER OF SAHARA AVE. AND McLEOD DR. NEAR THE PC OF SAHARA AVE.
16	6C11 10NWW6	621.159	F N D RIVET AND SQUARE ALUMINUM PLATE IN TOP OF CURB, NORTHEAST CORNER OF PARADISE RD. AND KAREN AVE. NEAR THE PC OF PARADISE RD.	29	6C11 1SSE6	560.059	F N D RIVET AND SQUARE ALUMINUM PLATE IN TOP OF CURB, NORTHWEST CORNER OF SAHARA AVE. AND CHEVY PLACE-MOJAVE RD. NEAR THE PC OF SAHARA AVE.
17	6C11 10NWS	620.312	F N D NDOT BRASS CAP IN TOP OF CURB, SOUTHEAST CORNER OF SAHARA AVE. AND PARADISE RD. NEAR THE PC OF SAHARA AVE. STAMPED "STA C-160+40.00 POT DIST. 61.01, ANGLE 90"	30			LOST 2003
18	CLV 1613 C2	618.238	F N D CITY OF LAS VEGAS PIN AND PLATE IN TOP OF CURB, NORTHEAST CORNER OF SAHARA AVE. AND SANTA ROSA DR. NEAR THE PC OF SAHARA AVE, STAMPED "1613 C2".	31			LOST 2003
19	6C11 3S4	616.448	F N D RIVET AND SQUARE ALUMINUM PLATE IN TOP OF CURB, NORTHEAST CORNER OF SAHARA AVE. AND 6TH ST. NEAR THE PC OF OF SAHARA AVE.	32	6C11 12NWW6	577.685	F N D RIVET AND SQUARE ALUMINUM PLATE IN TOP OF CURB, NORTHEAST CORNER EASTERN AVE. AND KAREN AVE. NEAR THE PC OF EASTERN AVE.
20	6C11 3SSE6	613.720	F N D RIVET AND SQUARE ALUMINUM PLATE IN TOP OF CURB, NORTHEAST CORNER OF SAHARA AVE. AND COMMERCIAL CENTER DR. BY THE EAST SIGNAL CONTROL BOX.	33	6C11 12W4	582.440	F N D RIVET AND SQUARE ALUMINUM PLATE IN TOP OF CURB, NORTHEAST CORNER OF EASTERN AVE. AND VEGAS VALLEY DR. NEAR THE PC OF EASTERN AVE.
21	6C11 2SWS	609.563	F N D RIVET AND SQUARE ALUMINUM PLATE IN TOP OF CURB, NORTHEAST CORNER SAHARA AVE. AND MARYLAND PKWY. NEAR THE PC OF SAHARA AVE.	34	6C11 12SWW6	585.442	F N D RIVET AND SQUARE ALUMINUM PLATE IN TOP OF CURB, NORTHEAST CORNER OF EASTERN AVE. AND GOLDEN ARROW DR. NEAR THE PC OF EASTERN AVE.
22	6C11 2SSW6	603.387	F N D RIVET AND SQUARE ALUMINUM PLATE IN TOP OF CURB, NORTHEAST CORNER OF SAHARA AVE. AND 15TH ST. NEAR THE PC OF SAHARA AVE.	35	6C11 15SWW6	625.233	F N D RIVET AND SQUARE ALUMINUM PLATE IN TOP OF CURB, NORTHEAST CORNER OF PARADISE RD. AND DRIVEWAY GOING INTO 3900 PARADISE RD. NEAR PC OF PARADISE RD. 1/4 MILE SOUTH OF SANDS AVE.-TWIN AVE.
23	6C11 2S4	590.952	F N D RIVET AND SQUARE ALUMINUM PLATE IN TOP OF CURB, NORTHEAST CORNER OF SAHARA AVE. AND SPENCER ST. NEAR THE PC OF SAHARA AVE.	CLARK COUNTY VERTICAL CONTROL v.2003 CLARK COUNTY SURVEYOR'S OFFICE 5051 SOUTH PARADISE ROAD LAS VEGAS, NEVADA 89119 (702) 455-0640			
24	6C11 2SSE6	581.815	F N D RIVET AND SQUARE ALUMINUM PLATE IN TOP OF CURB, NORTHEAST CORNER OF SAHARA AVE. AND BURNHAM AVE. NEAR THE PC OF SAHARA AVE.				
				CONVERSION FACTOR: METERS X $\left(\frac{3937}{1200}\right)$ = U.S. SURVEY FEET REVISED 2003 SHEET 2 OF 5 21-61 NE			

No.	STATION	ELEVATION (METERS)	DESCRIPTION	No.	STATION	ELEVATION (METERS)	DESCRIPTION
36	6C11 13SWW6	589.096	F N D RIVET AND SQUARE ALUMINUM PLATE IN TOP OF CURB, NORTHEAST CORNER OF EASTERN AVE. AND VIKING RD. NEAR THE PC OF EASTERN AVE.	49	6C11 14SWW6	606.194	F N D RIVET AND SQUARE ALUMINUM PLATE IN TOP OF CURB, EAST SIDE OF MARYLAND PKWY. ON THE NORTH SIDE OF FLAMINGO WASH.
37			LOST 2003	50			LOST 2003
38	6C11 13NWW6	586.873	F N D RIVET AND SQUARE ALUMINUM PLATE IN TOP OF CURB, NORTHEAST CORNER OF EASTERN AVE. AND EMERSON AVE. NEAR THE PC OF EASTERN AVE.	51	6C11 14NWW6	605.938	F N D RIVET AND SQUARE ALUMINUM PLATE IN TOP OF CURB, NORTHEAST CORNER OF MARYLAND PKWY. AND SIERRA VISTA DR. NEAR THE PC OF MARYLAND PKWY.
39	6C11 1N6	565.049	F N D RIVET AND SQUARE ALUMINUM PLATE IN TOP OF CURB, EAST SIDE OF FREMONT ST. AND NORTH OF OLIVE ST. ACROSS THE STREET FROM THE CASTAWAYS HOTEL.	52			LOST 2003
40	6C11 1C4	561.986	F N D RIVET AND SQUARE ALUMINUM PLATE IN TOP OF CURB, EAST SIDE OF FREMONT ST. AT PROJECTED CENTERLINE OF OAKLEY BLVD. BETWEEN 3045 & 3025 FREMONT ST. JUST SOUTH OF CAT BUS STOP # 7136.	53			LOST 2003
41	6C11 1E6	558.964	F N D RIVET AND SQUARE ALUMINUM PLATE IN TOP OF CURB, SOUTHEAST CORNER OF FREMONT ST. AND MOJAVE RD. NEAR 1/2 DELTA.	54	6C11 11NWW6	612.288	F N D RIVET AND SQUARE ALUMINUM PLATE IN TOP OF CURB, NORTHEAST CORNER MARYLAND PKWY AND KAREN AVE. NEAR THE PC OF MARYLAND PKWY.
42	6C11 12N6	569.678	F N D RIVET AND SQUARE ALUMINUM PLATE IN TOP OF CURB, SOUTHEAST CORNER OF McLEOD DR. AND KAREN AVE. NEAR THE PC OF McLEOD DR.	55	7C11 13SSE6	582.089	F N D RIVET AND SQUARE ALUMINUM PLATE IN TOP OF CURB, NORTHEAST CORNER OF FLAMINGO RD. AND MOJAVE RD. NEAR THE PC OF FLAMINGO RD.
43	6C11 12C4	569.329	F N D RIVET AND SQUARE ALUMINUM PLATE IN TOP OF CURB, NORTHEAST CORNER OF McLEOD DR. AND VEGAS VALLEY DR. NEAR THE PC OF McLEOD DR.	56	7C11 13S4	582.987	F N D RIVET AND SQUARE ALUMINUM PLATE IN TOP OF CURB, NORTHEAST CORNER OF FLAMINGO RD. AND McLEOD DR. NEAR THE PC OF FLAMINGO RD.
44	6C11 12S6	571.171	F N D RIVET AND SQUARE ALUMINUM PLATE IN TOP OF CURB, NORTHEAST CORNER OF McLEOD DR. AND PALORA AVE. NEAR THE PC OF McLEOD DR.	57	7C11 13SSW6	589.395	F N D RIVET AND SQUARE ALUMINUM PLATE IN TOP OF CURB, NORTHEAST CORNER FLAMINGO RD. AND TOPAZ RD. NEAR THE PC OF OF FLAMINGO RD.
45			LOST 2003	58			LOST 2003
46	6C11 13E6	578.454	F N D RIVET AND SQUARE ALUMINUM PLATE IN TOP OF CURB, NORTHEAST CORNER OF TWAIN AVE. AND PECOS- McCLOUD INTERCONNECT NEAR THE PC OF PECOS- McCLEOD INTERCONNECT.	59	7C11 14S4	598.865	F N D RIVET AND SQUARE ALUMINUM PLATE IN TOP OF CURB, NORTHEAST CORNER OF FLAMINGO RD. AND SPENCER ST. NEAR THE PC OF FLAMINGO RD.
47	6C11 13SEE6	574.503	F N D RIVET AND SQUARE ALUMINUM PLATE IN TOP OF CURB, NORTHEAST CORNER OF VIKING RD. AND PECOS- McCLEOD INTERCONNECT NEAR THE PC OF PECOS- McCLEOD INTERCONNECT.	CLARK COUNTY VERTICAL CONTROL v.2003 CLARK COUNTY SURVEYOR'S OFFICE 5051 SOUTH PARADISE ROAD LAS VEGAS, NEVADA 89119 (702) 455-0640			
48	6C11 14SWS	610.410	F N D RIVET AND SQUARE ALUMINUM PLATE IN TOP OF CURB, NORTHEAST CORNER OF MARYLAND PKWY. AND FLAMINGO RD. NEAR 1/2 DELTA.				
				CONVERSION FACTOR: METERS X $\left(\frac{3937}{1200}\right)$ = U.S. SURVEY FEET REVISED 2003 SHEET 3 OF 5 21-61 NE			

No.	STATION	ELEVATION (METERS)	DESCRIPTION	No.	STATION	ELEVATION (METERS)	DESCRIPTION
60	7C11 14SSW6	604.305	F RIVET AND SQUARE ALUMINUM PLATE IN TOP OF CURB, N NORTHEAST CORNER OF FLAMINGO RD. AND TAMARUS D ST.—ALGONQUIN DR. NEAR PC OF FLAMINGO RD.	73	2LV11 01SWW6	574.543	F CITY OF LAS VEGAS PIN AND PLATE IN TOP OF CURB, N NORTHEAST CORNER OF EASTERN AVE. AND ST. LOUIS D AVE. NEAR THE PC OF EASTERN AVE.
61	7C11 15SSE6	615.438	F RIVET AND SQUARE ALUMINUM PLATE IN TOP OF CURB, N NORTHEAST CORNER OF FLAMINGO RD. AND CAMBRIDGE D ST. NEAR THE PC OF FLAMINGO RD.	74	8C11 12SWS 1998	584.471	S RIVET AND ROUND ALUMINUM PLATE IN TOP OF CURB, E NORTHEAST CORNER OF EASTERN AVE. AND DESERT INN T RD. NEAR THE PC OF EASTERN AVE.
62	7C11 15S4	618.803	F RIVET AND SQUARE ALUMINUM PLATE IN TOP OF CURB, N NORTHEAST CORNER OF FLAMINGO RD. AND SWENSON D ST. NEAR THE PC OF FLAMINGO RD.	75	7C11 1SES 1997	555.957	S RIVET AND ROUND ALUMINUM PLATE IN TOP OF CURB, E NORTHEAST CORNER OF SAHARA AVE. AND FREMONT ST. T NEAR PC OF SAHARA AVE.
63	7C11 15SSW6	622.602	F RIVET AND SQUARE ALUMINUM PLATE IN TOP OF CURB, N NORTHEAST CORNER OF FLAMINGO RD. AND PALOS D VERDE ST. NEAR THE PC OF FLAMINGO RD.	76	BOULEVARD 2 AZI. NO. 3 1977	562.983	F 4" NGS BRASS CAP IN TOP OF CURB ON EAST SIDE OF N FREMONT ST. AT 2965 FREMONT ST. D
64			LOST 2003	77	8C11 13W4 1998	584.619	S RIVET AND ROUND ALUMINUM PLATE IN TOP OF CURB, E NORTHEAST CORNER OF EASTERN AVE. AND TWAIN AVE. T NEAR THE PC OF EASTERN AVE.
65			LOST 2003	78	8C11 14SSE6 1998	596.609	S RIVET AND ROUND ALUMINUM PLATE IN TOP OF CURB, E NORTHWEST CORNER OF FLAMINGO RD. AND BURNHAM T AVE. NEAR THE PC OF FLAMINGO RD.
66			LOST 2003	79	0C11 10SSW6 2000	612.724	S RIVET AND ROUND ALUMINUM PLATE IN TOP OF CURB, E NORTH SIDE OF DESERT INN RD. 0.25 MILES WEST OF T JOE W. BROWN DR.
67			LOST 2003	80	0C11 10SWS 2000	622.920	S RIVET AND ROUND ALUMINUM PLATE IN TOP OF CURB, E NORTHEAST CORNER OF DESERT INN RD. AND PARADISE T RD. NEAR THE PC OF PARADISE RD.
68			LOST 2003	81	0C11 14W4 2000	607.113	S RIVET AND ROUND ALUMINUM PLATE IN TOP OF CURB, E NORTHEAST CORNER OF MARYLAND PKWY. AND TWAIN T AVE. NEAR THE PC OF MARYLAND PKWY.
69	0C11 10SWW6 2000	622.787	S RIVET AND ROUND ALUMINUM PLATE IN TOP OF CURB, E NORTHEAST CORNER OF PARADISE RD. AND CONVENTION T CENTER DR. NEAR THE PC OF PARADISE RD.	82	0C11 11SWW6 2000	610.465	S RIVET AND ROUND ALUMINUM PLATE IN TOP OF CURB, E NORTHEAST CORNER OF MARYLAND PKWY. AND SUNRISE T HOSPITAL DR. NEAR THE PC OF MARYLAND PKWY.
70	0C11 10W4 2000	622.098	S RIVET AND ROUND ALUMINUM PLATE IN TOP OF CURB, E NORTHEAST CORNER OF PARADISE RD. AND RIVIERA T BLVD. NEAR THE PC OF PARADISE RD.	83	0C11 11W4 2000	610.250	S RIVET AND ROUND ALUMINUM PLATE IN TOP OF CURB, E NORTHEAST CORNER OF MARYLAND PKWY. AND VEGAS T VALLEY DR. NEAR THE PC OF MARYLAND PKWY.
71	2LV11 01NWW6	571.316	F RIVET AND ROUND ALUMINUM PLATE IN TOP OF CURB, N SOUTHEAST CORNER OF EASTERN AVE. AND FRANKLIN D AVE. NEAR THE PC OF EASTERN AVE.	CLARK COUNTY VERTICAL CONTROL v.2003 CLARK COUNTY SURVEYOR'S OFFICE 5051 SOUTH PARADISE ROAD LAS VEGAS, NEVADA 89119 (702) 455-0640			
72	1LV11 02E4	571.957	F RIVET AND ROUND ALUMINUM PLATE IN TOP OF CURB, N SOUTHWEST CORNER OF EASTERN AVE. AND OAKLEY D BLVD. NEAR 1/3 DELTA OF EASTERN AVE.				
				CONVERSION FACTOR: METERS X $\left(\frac{3937}{1200}\right)$ = U.S. SURVEY FEET REVISED 2003 SHEET 4 OF 5 21-61 NE			

No.	STATION	ELEVATION (METERS)	DESCRIPTION		No.	STATION	ELEVATION (METERS)	DESCRIPTION	
84	8C11 13SWS 1998	594.234	S E T	RIVET AND ROUND ALUMINUM PLATE IN TOP OF CURB, NORTHEAST CORNER OF EASTERN AVE. AND FLAMINGO RD. NEAR THE PC OF EASTERN AVE..	97				
85	BOULEVARD 2 AZI. NO. 5 1977	567.676	F N D	3 1/2" NGS BRASS CAP IN CONCRETE STEP OF ENTRANCE TO "US MOTEL" AT 2490 FREMONT ST.	98				
86	8C11 13C4 1988	581.080	S E T	RIVET AND ROUND ALUMINUM PLATE IN TOP OF CURB, NORTHEAST CORNER OF MCLEOD DR. AND TWAIN AVE. NEAR THE PT OF TWAIN AVE.	99				
87	2LV11 3SWS	620.318	S E T	NDOT BRASS CAP IN TOP OF CURB, NORTHEAST CORNER OF SAHARA AVE. AND PARADISE RD. NEAR THE PC OF SAHARA AVE., STAMPED "2LV11 03SWS STA C-160+40.00".	100				
88	0LV11 1SES	556.259	F N D	CITY OF LAS VEGAS PIN AND PLATE IN TOP OF CURB, NORTHWEST CORNER OF SAHARA AVE. AND FREMONT ST. NEAR THE PC OF FREMONT ST.	101				
89					102				
90					103				
91					104				
92					105				
93					106				
94					107				
95					CLARK COUNTY VERTICAL CONTROL v.2003				
96					CLARK COUNTY SURVEYOR'S OFFICE 5051 SOUTH PARADISE ROAD LAS VEGAS, NEVADA 89119 (702) 455-0640		CONVERSION FACTOR: METERS X $\left(\frac{3937}{1200}\right)$ = U.S. SURVEY FEET		
							REVISED 2003	SHEET 5 OF 5	21-61 NE