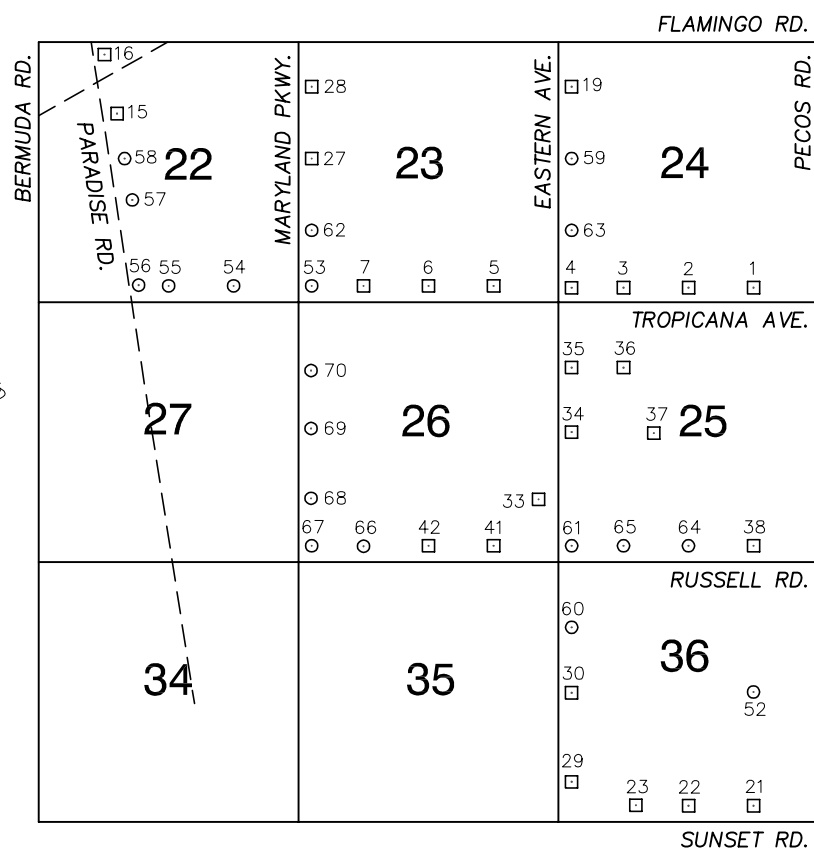


# Township 21 South, Range 61 East Southeast Quarter



NORTH AMERICAN VERTICAL  
DATUM OF 1988  
- ALL ELEVATIONS IN METERS -

No.	STATION	ELEVATION (METERS)	DESCRIPTION
1	6C11 24SSE6	598.814	F N D RIVET AND SQUARE ALUMINUM PLATE IN TOP OF CURB, NORTHEAST CORNER OF TROPICANA AVE. AND MOJAVE RD. NEAR THE PC OF TROPICANA AVE.
2	6C11 24S4	599.561	F N D RIVET AND SQUARE ALUMINUM PLATE IN TOP OF CURB, NORTHEAST CORNER OF TROPICANA AVE. AND McLEOD DR. NEAR THE PC OF TROPICANA AVE.
3	6C11 24SSW6	602.050	F N D RIVET AND SQUARE ALUMINUM PLATE IN TOP OF CURB, NORTHEAST CORNER OF TROPICANA AVE. AND TOPAZ ST. NEAR THE PC OF TROPICANA AVE.
4	6C11 24SWS	601.889	F N D RIVET AND SQUARE ALUMINUM PLATE IN TOP OF CURB, NORTHEAST CORNER OF TROPICANA AVE. AND EASTERN AVE. NEAR THE PC OF TROPICANA AVE.
5	6C11 23SSE6	606.004	F N D RIVET AND SQUARE ALUMINUM PLATE IN TOP OF CURB, NORTHEAST CORNER OF TROPICANA AVE. AND BURNHAM AVE. NEAR THE PC OF TROPICANA AVE.
6	6C11 23S4	608.631	F N D RIVET AND SQUARE ALUMINUM PLATE IN TOP OF CURB, NORTHEAST CORNER OF TROPICANA AVE. AND SPENCER ST. NEAR THE PC OF TROPICANA AVE.
7	6C11 23SSW6	611.761	F N D RIVET AND SQUARE ALUMINUM PLATE IN TOP OF CURB, NORTHEAST CORNER OF TROPICANA AVE. AND TAMARUS ST. IN FRONT OF A LIGHT POLE.
8			LOST 2003
9			LOST 2003
10			LOST 2003
11			LOST 2003

## CLARK COUNTY VERTICAL CONTROL v.2003

CLARK COUNTY SURVEYOR'S OFFICE  
5051 SOUTH PARADISE ROAD  
LAS VEGAS, NEVADA 89119  
(702) 455-0640

CONVERSION FACTOR:  
METERS X  $\left(\frac{3937}{1200}\right)$  = U.S. SURVEY FEET

REVISED  
09/01/2006

SHEET  
1 OF 4

21-61  
SE

No.	STATION	ELEVATION (METERS)	DESCRIPTION	No.	STATION	ELEVATION (METERS)	DESCRIPTION
12			LOST 2003	25			LOST 2003
13			LOST 2003	26			LOST 2003
14			LOST 2003	27	6C11 23W4	612.913	F N D RIVET AND SQUARE ALUMINUM PLATE IN TOP OF CURB, NORTHEAST CORNER OF MARYLAND PKWY. AND HARMON AVE. NEAR THE PC OF MARYLAND PKWY.
15	6C11 22NWW6	624.519	F N D RIVET AND SQUARE ALUMINUM PLATE IN TOP OF CURB, EAST SIDE OF PARADISE RD. AT FLAMINGO WASH BOX, JUST NORTH OF SOUTH DRIVEWAY INTO COBBLESTONE CREEK APTS. 4200 PARADISE RD.	28	6C11 23NWW6	612.434	F N D RIVET AND SQUARE ALUMINUM PLATE IN TOP OF CURB, NORTHEAST CORNER OF MARYLAND PKWY. AND ROCHELLE AVE. NEAR THE PC OF MARYLAND PKWY.
16	6C11 22NWS	624.806	F N D RIVET AND SQUARE ALUMINUM PLATE IN TOP OF CURB, NORTHEAST CORNER OF PARADISE RD. AND FLAMINGO RD. NEAR THE PC OF PARADISE RD.	29	7C11 36SWW6	617.456	F N D RIVET AND SQUARE ALUMINUM PLATE IN TOP OF CURB, NORTHEAST CORNER OF EASTERN AVE. AND CHANDLER AVE. NEAR THE PC OF EASTERN AVE.
17			LOST 2003	30	7C11 36W4	615.404	F N D RIVET AND SQUARE ALUMINUM PLATE IN TOP OF CURB, NORTHEAST CORNER OF EASTERN AVE. AND PATRICK LN. NEAR THE PC OF EASTERN AVE.
18			LOST 2003	31			LOST 2003
19	6C11 24NWW6	596.004	F N D RIVET AND SQUARE ALUMINUM PLATE IN TOP OF CURB, NORTHEAST CORNER OF EASTERN AVE. AND ROCHELLE AVE. NEAR THE PC OF EASTERN AVE.	32			LOST 2003
20			LOST 2003	33	7C11 26SEE6	612.773	F N D RIVET AND SQUARE ALUMINUM PLATE IN TOP OF CURB, NORTHWEST CORNER OF EASTERN AVE. AND RAWHIDE ST. NEAR THE PC OF EASTERN AVE.
21	6C11 36SSE6	600.761	F N D RIVET AND SQUARE ALUMINUM PLATE IN TOP OF CURB, NORTHEAST CORNER OF SUNSET RD. AND TOMIYASU LN. NEAR A METAL STREET LIGHT POLE.	34	7C11 25W4	609.438	F N D RIVET AND SQUARE ALUMINUM PLATE IN TOP OF CURB, NORTHEAST CORNER OF EASTERN AVE. AND HACIENDA AVE. NEAR THE PC OF EASTERN AVE.
22	6C11 36S4	608.274	F N D RIVET AND SQUARE ALUMINUM PLATE IN TOP OF CURB, NORTHEAST CORNER OF SUNSET RD. AND EXIT ROAD FOR SUNSET PARK.	35	7C11 25NWW6	604.678	F N D RIVET AND SQUARE ALUMINUM PLATE IN TOP OF CURB, NORTHEAST CORNER OF EASTERN AVE. AND RENO AVE. NEAR THE PC OF EASTERN AVE.
23	6C11 36SSW6	610.226	F N D RIVET AND SQUARE ALUMINUM PLATE IN TOP OF CURB, NORTHEAST CORNER OF SUNSET RD. AND McLEOD DR. NEAR THE PC OF SUNSET RD.	<b>CLARK COUNTY VERTICAL CONTROL v.2003</b>  CLARK COUNTY SURVEYOR'S OFFICE 5051 SOUTH PARADISE ROAD LAS VEGAS, NEVADA 89119 (702) 455-0640			
24			LOST 2003				
				CONVERSION FACTOR: METERS X $\left(\frac{3937}{1200}\right)$ = U.S. SURVEY FEET  REVISED 2003      SHEET 2 OF 4 <b>21-61 SE</b>			

No.	STATION	ELEVATION (METERS)	DESCRIPTION	No.	STATION	ELEVATION (METERS)	DESCRIPTION
36	7C11 25NW6	607.077	F N RIVET AND SQUARE ALUMINUM PLATE IN TOP OF CURB, D NORTHWEST CORNER OF TOPAZ ST. AND RENO AVE. NEAR THE PC OF TOPAZ ST.	49			LOST 2006
37	7C11 25W6	606.047	F N RIVET AND SQUARE ALUMINUM PLATE IN TOP OF CURB, D SOUTHEAST CORNER OF HACIENDA AVE. AND HARRISON DR. JUST WEST OF THE WEST DRIVEWAY GOING INTO 2825 HACIENDA AVE.	50			LOST 2006
38	7C11 25SSE6	601.330	F N RIVET AND SQUARE ALUMINUM PLATE IN TOP OF CURB, D NORTHWEST CORNER OF RUSSELL RD. AND MOJAVE RD. NEAR THE PC OF RUSSELL RD.	51			LOST 2006
39			LOST 2003	52	7C11 36E6 1997	596.407	S E RIVET AND ROUND ALUMINUM PLATE IN TOP OF CURB, T SOUTH SIDE OF PATRICK LN. IN FRONT OF A METAL LIGHT POLE NEAR THE WEST DRIVEWAY OF 3245 PATRICK LN.
40			LOST 2003	53	8C11 23SWS 1998	615.729	S E RIVET AND ROUND ALUMINUM PLATE IN TOP OF CURB, T NORTHEAST CORNER OF TROPICANA AVE. AND MARYLAND PKWY. NEAR THE PC OF TROPICANA AVE.
41	7C11 26SSE6	615.915	F N RIVET AND SQUARE ALUMINUM PLATE IN TOP OF CURB, D NORTHEAST CORNER OF RUSSELL RD. AND BURNHAM AVE. IN FRONT OF 2120 RUSSELL RD.	54	8C11 22SSE6 1998	620.261	S E RIVET AND ROUND ALUMINUM PLATE IN TOP OF CURB, T NORTHEAST CORNER OF TROPICANA AVE. AND WILBUR ST.-THOMAS & MACK DR. IN A PORK CHOP ISLAND.
42	7C11 26S4	617.494	F N RIVET AND SQUARE ALUMINUM PLATE IN TOP OF CURB, D NORTHEAST CORNER OF RUSSELL RD. AND SPENCER ST. NEAR THE PC OF RUSSELL RD.	55	8C11 22S4 1998	623.676	S E RIVET AND ROUND ALUMINUM PLATE IN TOP OF CURB, T NORTHEAST CORNER OF TROPICANA AVE. AND SWENSON ST. NEAR THE PC OF TROPICANA AVE.
43			LOST 2003	56	8C11 22SSW6 1998	627.589	S E RIVET AND ROUND ALUMINUM PLATE IN TOP OF CURB, T NORTHEAST CORNER OF TROPICANA AVE. AND PARADISE RD. NEAR THE PC OF TROPICANA AVE.
44			LOST 2003	57	8C11 22SW6 1998	625.911	S E RIVET AND ROUND ALUMINUM PLATE IN TOP OF CURB, T NORTHEAST CORNER OF PARADISE RD. AND NAPLES DR. NEAR THE PC OF PARADISE RD.
45			LOST 2003	58	8C11 22W6 1998	625.835	S E RIVET AND ROUND ALUMINUM PLATE IN TOP OF CURB, T NORTHEAST CORNER OF PARADISE RD. AND HARMON AVE. NEAR THE PC OF PARADISE RD.
46			LOST 2003	59	8C11 24W4 1998	596.261	S E RIVET AND ROUND ALUMINUM PLATE IN TOP OF CURB, T NORTHEAST CORNER OF EASTERN AVE. AND HARMON AVE. NEAR THE PC OF EASTERN AVE.
47			LOST 2003	<b>CLARK COUNTY VERTICAL CONTROL v.2003</b>  CLARK COUNTY SURVEYOR'S OFFICE 5051 SOUTH PARADISE ROAD LAS VEGAS, NEVADA 89119 (702) 455-0640			
48			LOST 2003				
				CONVERSION FACTOR: METERS X $\left(\frac{3937}{1200}\right)$ = U.S. SURVEY FEET  <b>REVISED</b> <b>09/01/2006</b>			
				SHEET 3 OF 4			
				<b>21-61</b> <b>SE</b>			

No.	STATION	ELEVATION (METERS)	DESCRIPTION	No.	STATION	ELEVATION (METERS)	DESCRIPTION
60	8C11 36NWW6 1998	613.363	S E T RIVET AND ROUND ALUMINUM PLATE IN TOP OF CURB, NORTHEAST CORNER OF EASTERN AVE. AND OQUENDO RD. NEAR THE PC OF EASTERN AVE.	73			
61	8C11 25SWS 1998	611.619	S E T RIVET AND ROUND ALUMINUM PLATE IN TOP OF CURB, NORTHEAST CORNER OF EASTERN AVE. AND RUSSELL RD. NEAR THE PC OF EASTERN AVE.	74			
62	OC11 23SWW6 2000	613.941	S E T RIVET AND ROUND ALUMINUM PLATE IN TOP OF CURB, NORTHEAST CORNER OF MARYLAND PKWY. AND DEL MAR ST. NEAR THE PC OF MARYLAND PKWY.	75			
63	OC11 24SWW6 2000	600.180	S E T RIVET AND ROUND ALUMINUM PLATE IN TOP OF CURB, NORTHEAST CORNER OF EASTERN AVE. AND TOMPKINS AVE. NEAR THE PC OF EASTERN AVE.	76			
64	OC11 25S4 2000	607.099	S E T RIVET AND ROUND ALUMINUM PLATE IN TOP OF CURB, NORTHWEST CORNER OF RUSSELL RD. AND McLEOD RD. NEAR THE PC OF McLEOD RD.	77			
65	8C11 25SSW6 2000	607.440	S E T RIVET AND ROUND ALUMINUM PLATE IN TOP OF CURB, NORTHEAST CORNER OF RUSSELL RD. AND TOPAZ ST. NEAR THE PC OF RUSSELL RD.	78			
66	OC11 26SSW6 2000	620.411	S E T RIVET AND ROUND ALUMINUM PLATE IN TOP OF CURB, NORTHEAST CORNER OF RUSSELL RD. AND TAMARUS ST. NEAR THE PC OF RUSSELL RD.	79			
67	OC11 26SWS 2000	624.581	S E T RIVET AND ROUND ALUMINUM PLATE IN TOP OF CURB, NORTHEAST CORNER OF RUSSELL RD. AND MARYLAND PKWY. NEAR THE PC OF RUSSELL RD.	80			
68	OC11 26SWW6 2000	621.543	S E T RIVET AND ROUND ALUMINUM PLATE IN TOP OF CURB, NORTHEAST CORNER OF MARYLAND PKWY. AND RAWHIDE ST. NEAR THE PC OF MARYLAND PKWY.	81			
69	OC11 26W4 2000	619.436	S E T RIVET AND ROUND ALUMINUM PLATE IN TOP OF CURB, NORTHEAST CORNER OF MARYLAND PKWY. AND HACIENDA AVE. NEAR THE PC OF MARYLAND PKWY.	82			
70	OC11 26NWW6 2000	617.275	S E T RIVET AND ROUND ALUMINUM PLATE IN TOP OF CURB, NORTHEAST CORNER OF MARYLAND PKWY. AND RENO AVE. NEAR THE PC OF MARYLAND PKWY.	83			
71				<b>CLARK COUNTY VERTICAL CONTROL v.2003</b>  CLARK COUNTY SURVEYOR'S OFFICE 5051 SOUTH PARADISE ROAD LAS VEGAS, NEVADA 89119 (702) 455-0640			
72							
				CONVERSION FACTOR: METERS X $\left(\frac{3937}{1200}\right)$ = U.S. SURVEY FEET  REVISED 2003      SHEET 4 OF 4 <b>21-61 SE</b>			