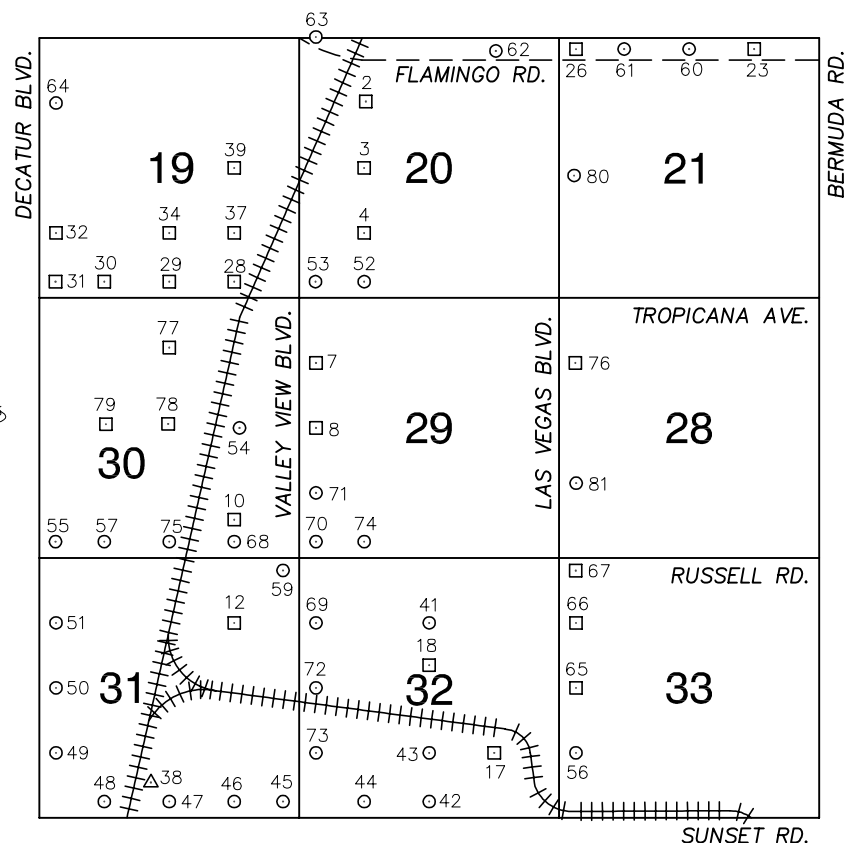


Township 21 South, Range 61 East Southwest Quarter



NORTH AMERICAN VERTICAL
DATUM OF 1988
- ALL ELEVATIONS IN METERS -

No.	STATION	ELEVATION (METERS)	DESCRIPTION
1			LOST 1992
2	6C11 20NW6	653.563	F N D RIVET AND SQUARE ALUMINUM PLATE IN TOP OF CURB, WEST SIDE OF POLARIS AVE. ± 1320 FEET NORTH OF HARMON AVE, IN FRONT OF 4285 POLARIS AVE.
3	6C11 20W6	654.323	F N D RIVET AND SQUARE ALUMINUM PLATE IN TOP OF CURB, SOUTHEAST CORNER OF POLARIS AVE. AND HARMON AVE. NEAR PC OF HARMON AVE.
4	6C11 20SW6	659.200	F N D RIVET AND SQUARE ALUMINUM PLATE IN TOP OF CURB, NORTHEAST CORNER OF POLARIS AVE. AND TOMPKINS AVE. NEAR THE PC OF POLARIS AVE.
5			LOST 2003
6			LOST 2003
7	6C11 29NWW6	668.497	F N D RIVET AND SQUARE ALUMINUM PLATE IN TOP OF CURB, SOUTHEAST CORNER OF VALLEY VIEW BLVD. AND RENO AVE. NEAR THE PC OF VALLEY VIEW BLVD.
8	6C11 29W4	670.697	F N D RIVET AND SQUARE ALUMINUM PLATE IN TOP OF CURB, NORTHEAST CORNER OF HACIENDA AVE. AND VALLEY VIEW BLVD. NEAR THE PC OF VALLEY VIEW BLVD.
9			LOST 2003
10	6C11 30SE6	680.714	F N D RIVET AND ROUND ALUMINUM PLATE IN TOP OF CURB, NORTHEAST CORNER OF WYNN RD. AND DEWEY DR. NEAR THE PC OF WYNN RD.
11			LOST 2003

CLARK COUNTY VERTICAL CONTROL v.2003

CLARK COUNTY SURVEYOR'S OFFICE
5051 SOUTH PARADISE ROAD
LAS VEGAS, NEVADA 89119
(702) 455-0640

CONVERSION FACTOR:
METERS X $\left(\frac{3937}{1200}\right)$ = U.S. SURVEY FEET

REVISED
09/01/2006

SHEET
1 OF 4

21-61
SW

No.	STATION	ELEVATION (METERS)	DESCRIPTION	No.	STATION	ELEVATION (METERS)	DESCRIPTION
12	6C11 31NE6	684.822	F N D RIVET AND SQUARE ALUMINUM PLATE IN TOP OF CURB, NORTHEAST CORNER OF WYNN RD. AND OQUENDO RD. NEAR THE PC OF WYNN RD.	25			LOST 2003
13			LOST 2003	26	7C11 21NWS	641.993	F N D RIVET AND SQUARE ALUMINUM PLATE IN TOP OF CURB, NORTHEAST CORNER OF FLAMINGO RD. AND LAS VEGAS BLVD. NEAR THE PC OF FLAMINGO RD.
14			LOST 2003	27			LOST 2003
15			LOST 2003	28	7C11 19SSE6	670.803	F N D RIVET AND SQUARE ALUMINUM PLATE IN TOP OF CURB, NORTHWEST CORNER OF TROPICANA AVE. AND WYNN RD. NEAR THE PC OF WYNN RD.
16			LOST 2003	29	7C11 19S4	675.991	F N D RIVET AND SQUARE ALUMINUM PLATE IN TOP OF CURB, NORTHEAST CORNER OF TROPICANA AVE AND ARVILLE ST. NEAR THE PC OF ARVILLE ST.
17	6C11 32SE6	672.178	F N D RIVET AND SQUARE ALUMINUM PLATE IN TOP OF CURB, SOUTHWEST CORNER OF POST RD. AND WINDY RD. NEAR THE PC OF POST RD.	30	7C11 19SSW6	683.310	F N D RIVET AND SQUARE ALUMINUM PLATE IN TOP OF CURB, NORTHWEST CORNER OF TROPICANA AVE. AND CAMERON ST. NEAR THE PC OF TROPICANA AVE.
18	6C11 32C4	677.177	F N D RIVET AND SQUARE ALUMINUM PLATE IN NORTHWEST CORNER OF RAILROAD BRIDGE CROSSING OVER FREEWAY, 90' EAST OF INDUSTRIAL RD. 7' NORTH OF TRACKS IN CONCRETE ABUTMENT.	31	7C11 19SWS	685.056	F N D RIVET AND SQUARE ALUMINUM PLATE IN TOP OF CURB, NORTHEAST CORNER OF TROPICANA AVE. AND DECATUR BLVD. NEAR THE PC OF TROPICANA AVE.
19			LOST 2003	32	7C11 19SWW6	687.374	F N D RIVET AND SQUARE ALUMINUM PLATE IN TOP OF CURB, EAST SIDE OF DECATUR BLVD. 1300' NORTH OF TROPICANA AVE. IN FRONT OF 4660 DECATUR BLVD.
20			LOST 2003	33			LOST 2003
21			LOST 2003	34	8C11 19S6	673.468	F N D RIVET AND SQUARE ALUMINUM PLATE IN TOP OF CURB, NORTHEAST CORNER OF ARVILLE ST. AND TOMPKINS AVE. NEAR THE PC OF ARVILLE ST.
22			LOST 2003	35			LOST 2003
23	7C11 21NNE6	629.679	F N D RIVET AND SQUARE ALUMINUM PLATE IN TOP OF CURB, NORTHEAST CORNER OF FLAMINGO RD. AND FREDDA ST. NEAR WHAT WOULD BE THE PC OF FLAMINGO RD.	CLARK COUNTY VERTICAL CONTROL v.2003 CLARK COUNTY SURVEYOR'S OFFICE 5051 SOUTH PARADISE ROAD LAS VEGAS, NEVADA 89119 (702) 455-0640			
24			LOST 2003				
				CONVERSION FACTOR: METERS X $\left(\frac{3937}{1200}\right)$ = U.S. SURVEY FEET REVISED 08/01/2003			
				SHEET 2 OF 4			
				21-61 SW			

No.	STATION	ELEVATION (METERS)	DESCRIPTION		No.	STATION	ELEVATION (METERS)	DESCRIPTION					
36				LOST 2003	49	7C11 31SWW6 1997	705.375	S E T	RIVET AND ROUND ALUMINUM PLATE IN A CONCRETE MONUMENT, NORTHEAST QUADRANT OF DECATUR BLVD. AND POST RD. 70' EAST OF DECATUR BLVD. AND 45' NORTH OF POST RD.				
37	7C11 19SE6	666.837	F N D	RIVET AND SQUARE ALUMINUM PLATE IN TOP OF CURB, SOUTHEAST CORNER OF TOMPKINS AVE. AND WYNN RD. NEAR THE PC OF WYNN RD.	50	7C11 31W4 1997	702.776	S E T	RIVET AND ROUND ALUMINUM PLATE IN A CONCRETE MONUMENT, NORTHEAST QUADRANT OF DECATUR BLVD. AND PATRICK LN. 70' EAST OF DECATUR BLVD. AND 40' NORTH OF PATRICK LN.				
38	R 366 1963	702.379	F N D	4" USGS BRASS CAP IN THE TOP OF A HEADWALL, EAST SIDE OF RR TRACKS AND NORTH OF PROJECTION OF SUNSET RD., STAMPED "R366 1963".	51	7C11 31NWW6 1997	700.091	S E T	RIVET AND ROUND ALUMINUM PLATE IN A CONCRETE MONUMENT, SOUTHEAST QUADRANT OF DECATUR BLVD. AND OQUENDO RD. 45' SOUTH OF OQUENDO RD. AND 70' EAST OF DECATUR BLVD.				
39	7C11 19E6	664.180	F N D	RIVET AND SQUARE ALUMINUM PLATE IN TOP OF CURB, NORTHEAST CORNER OF WYNN RD. AND HARMON AVE., EAST OF THE WESTERLY DRIVEWAY GOING INTO 4050 HARMON AVE.	52	7C11 20SSW6 1997	660.597	S E T	RIVET AND ROUND ALUMINUM PLATE IN TOP OF CURB, NORTHEAST CORNER OF TROPICANA AVE. AND POLARIS AVE. 10' NORTH OF THE PC OF POLARIS AVE.				
40				LOST 2003	53	7C11 20SWS 1997	663.898	S E T	RIVET AND ROUND ALUMINUM PLATE IN TOP OF CURB, NORTHEAST CORNER OF TROPICANA AVE. AND VALLEY VIEW BLVD. NEAR THE PT OF VALLEY VIEW BLVD.				
41	7C11 32N6 1997	673.385	S E T	RIVET AND ROUND ALUMINUM PLATE IN TOP OF CURB, SOUTHEAST CORNER OF INDUSTRIAL RD. AND OQUENDO RD.	54	7C11 30E6 1997	676.621	S E T	RIVET AND ROUND ALUMINUM PLATE IN TOP OF CURB, SOUTHEAST CORNER OF HACIENDA AVE. AND WYNN RD., NEAR THE PC OF WYNN RD.				
42	7C11 32S4 1997	681.069	S E T	RIVET AND ROUND ALUMINUM PLATE IN TOP OF CURB, NORTHWEST CORNER OF INDUSTRIAL RD. AND SUNSET RD. NEAR THE PC OF INDUSTRIAL RD.	55	7C11 30SWS 1997	696.408	F N D	RIVET AND ROUND ALUMINUM PLATE IN TOP OF CURB, NORTHEAST CORNER OF RUSSELL RD. AND DECATUR BLVD. APPROXIMATELY 20' EAST OF END OF CURB AND GUTTER.				
43	7C11 32S6 1997	679.023	S E T	RIVET AND ROUND ALUMINUM PLATE IN TOP OF CURB, SOUTHWEST CORNER OF INDUSTRIAL RD AND POST RD. NEAR THE PC OF INDUSTRIAL RD.	56	7C11 33SWW6 1997	668.267	S E T	RIVET AND ROUND ALUMINUM PLATE IN TOP OF CURB, NORTHEAST CORNER OF LAS VEGAS BLVD. AND POST RD. 100' NORTH OF CENTERLINE.				
44	7C11 32SSW6 1997	684.641	S E T	RIVET AND ROUND ALUMINUM PLATE IN TOP OF CURB, NORTHWEST CORNER OF SUNSET RD. AND POLARIS AVE. NEAR THE PC OF SUNSET RD.	57	4C11 30SSW6	694.134	F N D	RIVET AND SQUARE ALUMINUM PLATE IN TOP OF CURB, NORTHWEST CORNER OF RUSSELL RD. AND CAMERON ST. NORTH OF THE PC OF CAMERON ST.				
45	7C11 31SES 1997	689.797	S E T	RIVET AND ROUND ALUMINUM PLATE IN TOP OF CURB, NORTHWEST CORNER OF SUNSET RD. AND VALLEY VIEW BLVD. NEAR THE PC OF SUNSET RD.	58				LOST 2003				
46	7C11 31SSE6 1997	695.996	S E T	RIVET AND ROUND ALUMINUM PLATE IN TOP OF CURB, NORTHEAST CORNER OF SUNSET RD. AND HINSON ST. NEAR THE PC OF SUNSET RD.	59	4C11 31NES	678.402	F N D	2" DOME BRASS CAP IN TOP OF CURB, SOUTHWEST CORNER OF RUSSELL RD. AND VALLEY VIEW BLVD. NEAR THE PC OF VALLEY VIEW BLVD.				
47	7C11 31S4 1997	698.908	S E T	RIVET AND ROUND ALUMINUM PLATE IN AN ELECTRICAL TRANSFORMER PAD. 35' NORTH OF SUNSET RD AND 110' EAST OF ARVILLE ST.	CLARK COUNTY VERTICAL CONTROL v.2003 CLARK COUNTY SURVEYOR'S OFFICE 5051 SOUTH PARADISE ROAD LAS VEGAS, NEVADA 89119 (702) 455-0640								
48	8C11 31SSW6	705.568	F N D	2" BRASS CAP IN A CONCRETE MONUMENT, NORTHWEST CORNER OF SUNSET RD. AND CAMERON ST.									
					CONVERSION FACTOR: METERS X $\left(\frac{3937}{1200}\right)$ = U.S. SURVEY FEET				REVISED 08/01/2003		SHEET 3 OF 4	21-61 SW	

No.	STATION	ELEVATION (METERS)	DESCRIPTION	No.	STATION	ELEVATION (METERS)	DESCRIPTION
60	0C11 21N4 2000	632.742	S E T RIVET AND ROUND ALUMINUM PLATE IN TOP OF CURB, NORTHEAST CORNER OF FLAMINGO RD. AND KOVAL LN. NEAR THE PC OF FLAMINGO RD.	73	0C11 32SWW6 2000	685.505	S E T RIVET AND ROUND ALUMINUM PLATE IN TOP OF CURB, NORTHEAST CORNER OF VALLEY VIEW BLVD. AND POST RD. NEAR THE PC OF VALLEY VIEW BLVD.
61	0C11 21NNW6 2000	636.461	S E T RIVET AND ROUND ALUMINUM PLATE IN TOP OF CURB, NORTHEAST CORNER OF FLAMINGO RD. AND AUDRIE ST. NEAR THE PC OF FLAMINGO RD.	74	0C11 29SSW6 2000	674.147	S E T RIVET AND ROUND ALUMINUM PLATE IN TOP OF CURB, NORTHEAST CORNER OF RUSSELL RD. AND POLARIS AVE. NEAR THE PC OF RUSSELL RD.
62	0C11 20NNE6 2000	645.710	S E T RIVET AND ROUND ALUMINUM PLATE IN POWER POLE BASE ON THE NORTH SIDE OF FLAMINGO RD. AT THE ENTRANCE TO I-15	75	0C11 30S4 2000	684.578	S E T RIVET AND ROUND ALUMINUM PLATE IN TOP OF CURB, NORTHEAST CORNER OF RUSSELL RD. AND ARVILLE ST. NEAR THE PC OF RUSSELL RD.
63	0C11 20NWS 2000	656.086	S E T RIVET AND ROUND ALUMINUM PLATE IN TOP OF CURB, NORTHEAST CORNER OF FLAMINGO RD AND VALLEY VIEW BLVD. NEAR THE PC OF FLAMINGO RD.	76	4C11 28NWW6	650.667	F N D RIVET AND SQUARE ALUMINUM PLATE IN TOP OF CURB, NORTHEAST CORNER OF RENO AVE. AND LAS VEGAS BLVD. NEAR THE PT OF LAS VEGAS BLVD.
64	0C11 19NWW6 2000	680.651	S E T RIVET AND ROUND ALUMINUM PLATE IN TOP OF CURB, NORTHEAST CORNER OF DECATUR BLVD. AND ROCHELLE AVE. NEAR THE PC OF DECATUR BLVD.	77	9C11 30N6	678.126	F N D RIVET AND SQUARE ALUMINUM PLATE IN TOP OF CURB, NORTHWEST CORNER OF ARVILLE ST. AND RENO AVE. NEAR THE PC OF ARVILLE ST.
65	4C11 33W4	664.411	F N D RIVET AND SQUARE ALUMINUM PLATE IN TOP OF ISLAND NOSE, EAST SIDE OF LAS VEGAS BLVD. AT THE ENTRANCE TO McCARRAN AIRPORT.	78	9C11 30C4	682.033	F N D RIVET AND SQUARE ALUMINUM PLATE IN TOP OF CURB, SOUTHWEST CORNER OF ARVILLE ST. AND HACIENDA AVE. NEAR THE PC OF HACIENDA AVE.
66	4C11 33NWW6	662.310	F N D RIVET AND SQUARE ALUMINUM PLATE IN TOP OF CURB, EAST SIDE OF LAS VEGAS BLVD. AT 5195 LAS VEGAS BLVD. SO. 3' WEST OF A FIRE HYDRANT.	79	9C11 30W6	684.424	F N D RIVET AND SQUARE ALUMINUM PLATE IN TOP OF CURB, SOUTHEAST CORNER OF HACIENDA AVE. AND CAMERON ST. NEAR THE PT OF HACIENDA AVE.
67	4C11 33NWS	658.763	F N D RIVET AND SQUARE ALUMINUM PLATE IN TOP OF CURB, EAST SIDE OF LAS VEGAS BLVD. 150' SOUTH OF RUSSELL RD.	80	5C11 21W4	645.098	S E T RIVET AND ROUND ALUMINUM PLATE IN TOP OF CURB, SOUTH EAST CORNER OF LAS VEGAS BLVD. AND HARMON AVE. NEAR THE PC OF LAS VEGAS BLVD.
68	0C11 30SSE6 2000	680.796	S E T RIVET AND ROUND ALUMINUM PLATE IN TOP OF CURB, NORTHEAST CORNER OF RUSSELL RD. AND WYNN RD. NEAR THE PC OF RUSSELL RD.	81	5C11 28SWW6	652.692	S E T RIVET AND ROUND ALUMINUM PLATE IN TOP OF CURB, EAST SIDE OF LAS VEGAS BLVD. IN FRONT OF 3951 LAS VEGAS BLVD. (MANDALEY BAY HOTEL), ± 1600' NORTH OF RUSSELL RD.
69	0C11 32NWW6 2000	680.082	S E T RIVET AND ROUND ALUMINUM PLATE IN TOP OF CURB, NORTHEAST CORNER OF VALLEY VIEW BLVD. AND OQUENDO RD. NEAR THE PC OF VALLEY VIEW BLVD.	82			
70	0C11 29SWS 2000	678.032	S E T RIVET AND ROUND ALUMINUM PLATE IN TOP OF CURB, NORTHEAST CORNER OF VALLEY VIEW BLVD. AND RUSSELL RD. NEAR THE PC OF RUSSELL RD.	83			
71	0C11 29SWW6 2000	676.978	S E T RIVET AND ROUND ALUMINUM PLATE IN TOP OF CURB, NORTHEAST CORNER OF VALLEY VIEW BLVD. AND DIABLO DR. NEAR THE PC OF VALLEY VIEW BLVD.	CLARK COUNTY VERTICAL CONTROL v.2003 CLARK COUNTY SURVEYOR'S OFFICE 5051 SOUTH PARADISE ROAD LAS VEGAS, NEVADA 89119 (702) 455-0640			
72	0C11 32W4 2000	684.406	S E T RIVET AND ROUND ALUMINUM PLATE IN TOP OF CURB, EAST SIDE OF VALLEY VIEW BLVD. 75' NORTH OF THE RAILROAD CROSSING.				
				CONVERSION FACTOR: METERS X $\left(\frac{3937}{1200}\right)$ = U.S. SURVEY FEET REVISED 09/01/2006			
				SHEET 4 OF 4 21-61 SW			