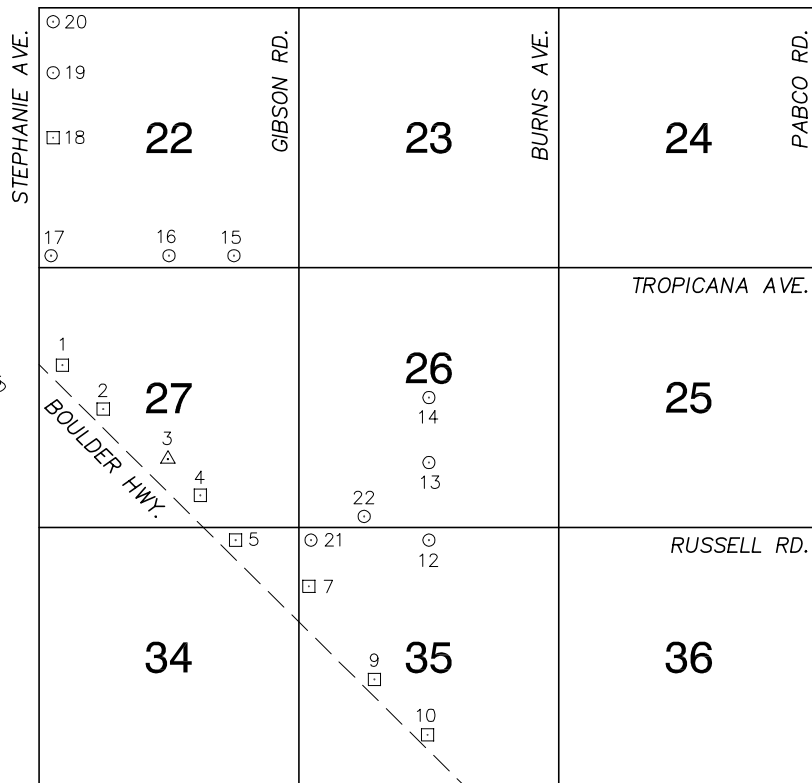


Township 21 South, Range 62 East Southeast Quarter

FLAMINGO RD.



SUNSET RD.

NORTH AMERICAN VERTICAL
DATUM OF 1988
- ALL ELEVATIONS IN METERS -

No.	STATION	ELEVATION (METERS)	DESCRIPTION
1	6C12 27NW6	506.738	F N D RIVET AND SQUARE ALUMINUM PLATE IN TOP OF CURB, NORTHEAST CORNER OF BOULDER HWY. AND WHITNEY AVE. NEAR THE PC OF BOULDER HWY.
2	6C12 27W6	506.070	F N D RIVET AND SQUARE ALUMINUM PLATE IN TOP OF CURB, BETWEEN 5947 AND 5959 BOULDER HWY. NEAR THE SOUTH END OF BUS STOP.
3	V 51 1942	504.781	F N D USC&GS BRASS CAP IN A CONCRETE MONUMENT, EAST OF BOULDER HWY. SOUTH OF HAMILTON AVE. IN FRONT OF 6101 BOULDER HWY. 5' NORTHEAST OF PP# 15162NP STAMPED "V51 RESET 1942".
4	6C12 27S6	502.313	F N D RIVET AND SQUARE ALUMINUM PLATE IN TOP OF CURB, SOUTHEAST CORNER OF BOULDER HWY. AND DESERT HORIZON DR. NEAR THE HALF DELTA OF THE ENTRANCE TO 6201 BOULDER HWY.
5	6C12 34NNE6	500.007	F N D RIVET AND SQUARE ALUMINUM PLATE IN TOP OF CURB, NORTH CORNER OF CONCRETE HEADWALL, SOUTHEAST CORNER OF BOULDER HWY. AND RUSSELL RD.
6			LOST 2003
7	6C12 35NWW6	499.797	F N D RIVET AND SQUARE ALUMINUM PLATE IN TOP OF CURB, EAST SIDE OF HOLLYWOOD BLVD. 0.2 MILES SOUTH OF RUSSELL RD., SOUTHWEST CORNER OF SILVER BOWL PARK, NORTH SIDE OF PARKING LOT.
8			LOST 2003
9	6C12 35W6	502.160	F N D RIVET AND SQUARE ALUMINUM PLATE IN A CONCRETE HEADWALL, EAST SIDE OF BOULDER HWY., 225' SOUTH OF 6760 BOULDER HWY.
10	6C12 35S6	502.468	F N D RIVET AND SQUARE ALUMINUM PLATE AT NORTH CORNER OF TOP OF HEADWALL. EAST SIDE OF BOULDER HWY. 600' NORTH OF SKYFOREST DR.
11			LOST 2003

CLARK COUNTY VERTICAL CONTROL v.2003

CLARK COUNTY SURVEYOR'S OFFICE
5051 SOUTH PARADISE ROAD
LAS VEGAS, NEVADA 89119
(702) 455-0640

CONVERSION FACTOR:

METERS X $\left(\frac{3937}{1200}\right)$ = U.S. SURVEY FEET

REVISED 2003

SHEET
1 OF 2

21-62
SE

No.	STATION	ELEVATION (METERS)	DESCRIPTION	No.	STATION	ELEVATION (METERS)	DESCRIPTION
12	8C12 35N4 1998	493.730	S E T RIVET AND ROUND ALUMINUM PLATE IN TOP OF CURB, SOUTHWEST CORNER OF RUSSELL RD. AND REBEL RD. IN A CULVERT HEADWALL.	25			
13	8C12 26S6 1998	491.831	S E T RIVET AND ROUND ALUMINUM PLATE IN TOP OF CONCRETE GUARD RAIL, EAST SIDE OF REBEL RD. 200' NORTH OF THE SAM BOYD STADIUM NORTH ENTRANCE.	26			
14	8C12 26C4 1998	492.324	S E T RIVET AND ROUND ALUMINUM PLATE IN TOP OF CONCRETE GUARD RAIL, EAST SIDE OF REBEL RD. NEAR THE ENTRANCE TO THE WHITNEY LIFT STATION.	27			
15	8C12 22SSE6 1998	503.620	S E T RIVET AND ROUND ALUMINUM PLATE IN TOP OF CURB, NORTHEAST CORNER OF TROPICANA AVE. AND HOLLYWOOD BLVD. NEAR THE PC OF TROPICANA AVE.	28			
16	8C12 22S4 1998	503.903	S E T RIVET AND ROUND ALUMINUM PLATE IN TOP OF CURB, NORTH SIDE OF TROPICANA AVE. NEAR THE ALIGNMENT OF STEPTOE ST.	29			
17	8C12 22SWS 1998	506.474	S E T RIVET AND ROUND ALUMINUM PLATE IN TOP OF CURB, NORTHEAST CORNER OF TROPICANA AVE. AND STEPHANIE ST. NEAR THE PC OF TROPICANA AVE.	30			
18	4C12 22W4	507.913	F N D RIVET AND SQUARE ALUMINUM PLATE IN TOP OF CURB, SOUTHEAST CORNER OF STEPHANIE ST. AND JIMMY DURANTE BLVD. NEAR THE PC STEPHANIE ST.	31			
19	8C12 22NWW6 1998	511.086	S E T RIVET AND ROUND ALUMINUM PLATE IN A CONCRETE MONUMENT, NORTHEAST CORNER OF STEPHANIE ST. AND ROCHELLE AVE.	32			
20	8C12 22NWS 1998	512.504	S E T RIVET AND ROUND ALUMINUM PLATE IN TOP OF CURB, NORTHEAST CORNER OF FLAMINGO RD. AND STEPHANIE ST. NEAR THE PC OF STEPHANIE ST.	33			
21	8C12 35NWS 1998	498.069	S E T RIVET AND ROUND ALUMINUM PLATE IN TOP OF CURB, SOUTHEAST CORNER OF HOLLYWOOD BLVD. AND RUSSELL RD. NEAR THE PC OF HOLLYWOOD BLVD.	34			
22	8C12 26SSW6 1998	496.152	S E T RIVET AND ROUND ALUMINUM PLATE IN TOP OF CURB, NORTHEAST CORNER OF RUSSELL RD. AND STADIUM WAY NEAR THE END OF CURB ON RUSSELL RD.	35			
23				CLARK COUNTY VERTICAL CONTROL v.2003			
24				<div>CLARK COUNTY SURVEYOR'S OFFICE 5051 SOUTH PARADISE ROAD LAS VEGAS, NEVADA 89119 (702) 455-0640</div> <div>CONVERSION FACTOR: METERS X $\left(\frac{3937}{1200}\right)$ = U.S. SURVEY FEET</div> <div>REVISED 2003</div>			
						SHEET 2 OF 2	21-62 SE