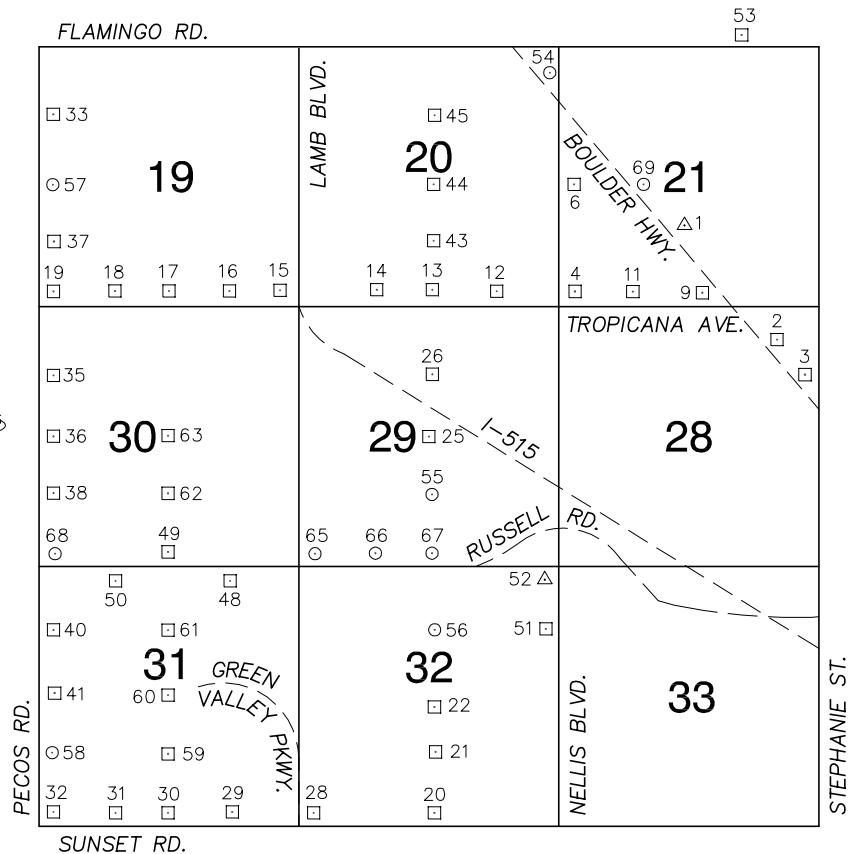


Township 21 South, Range 62 East Southwest Quarter



NORTH AMERICAN VERTICAL
DATUM OF 1988
- ALL ELEVATIONS IN METERS -

No.	STATION	ELEVATION (METERS)	DESCRIPTION
1	J 399 1980	511.426	F N D USC&GS STAINLESS STEEL ROD IN WELL SLEEVE, EAST SIDE OF BOULDER HWY. 610' NORTHWEST OF TROPICANA AVE. 2' SOUTH OF POWER POLE #P74648, STAMPED "J399 1980"
2	6C12 28NE6	508.321	F N D RIVET AND SQUARE ALUMINUM PLATE IN TOP OF CURB, SOUTHEAST CORNER OF BOULDER HWY. AND ENGLISH AVE. NEAR THE PC OF BOULDER HWY.
3	6C12 28NEE6	507.547	F N D RIVET AND SQUARE ALUMINUM PLATE IN TOP OF CURB, NORTHEAST CORNER OF BOULDER HWY. AND MISSOURI AVE. NEAR THE PC OF BOULDER HWY.
4	6C12 21SWS	522.048	F N D RIVET AND SQUARE ALUMINUM PLATE IN TOP OF CURB, NORTHEAST CORNER OF TROPICANA AVE. AND NELLIS BLVD. NEAR THE PC OF TROPICANA BLVD.
5			LOST 2003
6	6C12 21W4	521.863	F N D RIVET AND SQUARE ALUMINUM PLATE IN TOP OF CURB, NORTHEAST CORNER OF NELLIS BLVD. AND HARMON AVE. NEAR THE PC OF NELLIS BLVD.
7			LOST 2003
8			LOST 2003
9	6C12 21SSE6	511.719	F N D RIVET AND SQUARE ALUMINUM PLATE IN TOP OF CURB, NORTHWEST CORNER OF TROPICANA AVE. AND BOULDER HWY. NEAR PC OF TROPICANA AVE.
10			LOST 2003
11	6C12 21SSW6	515.526	F N D RIVET AND SQUARE ALUMINUM PLATE IN TOP OF CURB, NORTHEAST CORNER OF TROPICANA AVE. AND MORRIS ST.
CLARK COUNTY VERTICAL CONTROL v.2003			
CLARK COUNTY SURVEYOR'S OFFICE 5051 SOUTH PARADISE ROAD LAS VEGAS, NEVADA 89119 (702) 455-0640			CONVERSION FACTOR: METERS X $\left(\frac{3937}{1200}\right)$ = U.S. SURVEY FEET
REVISED 2003		SHEET 1 OF 4	21-62 SW

No.	STATION	ELEVATION (METERS)		DESCRIPTION	No.	STATION	ELEVATION (METERS)		DESCRIPTION
12	6C12 20SSE6	529.252	F N D	RIVET AND SQUARE ALUMINUM PLATE IN TOP OF CURB, NORTHWEST CORNER OF TROPICANA AVE. AND THE DRIVEWAY INTO 4801 NELLIS BLVD., ON SOUTH SIDE.	25	6C12 29C4	544.479	F N D	RIVET AND SQUARE ALUMINUM PLATE IN TOP OF CURB, NORTHEAST CORNER OF MOUNTAIN VISTA ST. AND HACIENDA AVE. NEAR THE PC OF MOUNTAIN VISTA ST.
13	6C12 20S4	536.511	F N D	RIVET AND SQUARE ALUMINUM PLATE IN TOP OF CURB, NORTHEAST CORNER OF TROPICANA AVE. AND MOUNTAIN VISTA ST. NEAR THE PC OF TROPICANA AVE.	26	6C12 29N6	538.299	F N D	RIVET AND SQUARE ALUMINUM PLATE IN TOP OF CURB, NORTHEAST CORNER OF MOUNTAIN VISTA ST. AND SAN RAFAEL AVE. NEAR THE PC OF MOUNTAIN VISTA ST.
14	6C12 20SSW6	543.340	F N D	RIVET AND SQUARE ALUMINUM PLATE IN TOP OF CURB, NORTHEAST CORNER OF TROPICANA AVE. AND PALM ST.	27				LOST 2003
15	6C12 19SES	558.306	F N D	RIVET AND SQUARE ALUMINUM PLATE IN TOP OF CURB, NORTH SIDE OF TROPICANA AVE. AND EAST SIDE OF FREEWAY SOUTH BOUND EXIT NEAR THE PC OF TROPICANA AVE.	28	6C12 32SWS	593.154	F N D	RIVET AND SQUARE ALUMINUM PLATE IN TOP OF CURB, NORTHEAST CORNER OF SUNSET RD. AND GREEN VALLEY PKWY. NEAR THE PC OF SUNSET RD.
16	6C12 19SSE6	575.011	F N D	RIVET AND SQUARE ALUMINUM PLATE IN TOP OF CURB, NORTHEAST CORNER OF TROPICANA AVE. AND ROLLINGWOOD CIR. NEAR THE PC OF TROPICANA AVE.	29	6C12 31SSE6	587.830	F N D	RIVET AND SQUARE ALUMINUM PLATE IN TOP OF CURB, NORTHEAST CORNER OF SUNSET RD. AND ANNIE OAKLEY DR. NEAR THE PC OF SUNSET RD.
17	6C12 19S4	584.403	F N D	RIVET AND SQUARE ALUMINUM PLATE IN TOP OF CURB, NORTHEAST CORNER OF TROPICANA AVE. AND SANDHILL RD. NEAR THE PC OF TROPICANA AVE.	30	6C12 31S4	590.227	F N D	RIVET AND SQUARE ALUMINUM PLATE IN TOP OF CURB, NORTHEAST CORNER OF SUNSET RD. AND SANDHILL RD. NEAR THE PC OF SUNSET RD.
18	6C12 19SSW6	594.154	F N D	RIVET AND SQUARE ALUMINUM PLATE IN TOP OF CURB, NORTHEAST CORNER OF TROPICANA AVE. AND PEARL ST. NEAR THE PC OF TROPICANA AVE.	31	6C12 31SSW6	592.419	F N D	RIVET AND SQUARE ALUMINUM PLATE IN TOP OF CURB, NORTHEAST CORNER OF SUNSET RD. AND PEARL ST.
19	6C12 19SWS	598.228	F N D	RIVET AND SQUARE ALUMINUM PLATE IN TOP OF CURB, NORTHEAST CORNER OF TROPICANA AVE. AND PECOS RD. NEAR THE PC OF TROPICANA AVE.	32	6C12 31SWS	594.077	F N D	RIVET AND SQUARE ALUMINUM PLATE IN TOP OF CURB, NORTHEAST CORNER OF SUNSET RD. AND PECOS RD. NEAR THE PC OF SUNSET RD.
20	6C12 32S4	585.456	F N D	RIVET AND SQUARE ALUMINUM PLATE IN TOP OF CURB, NORTHEAST CORNER OF SUNSET RD. AND MOUNTAIN VISTA ST. NEAR THE PC OF MOUNTAIN VISTA ST.	33	6C12 19NWW6	582.590	F N D	2" DOME BRASS CAP IN TOP OF CURB, NORTHEAST CORNER OF ROCHELLE AVE. & PECOS RD. NEAR THE PC OF PECOS RD. STAMPED "RLS 5835, 68.06 RM BM 6C12 19NWW6"
21	6C12 32S6	585.763	F N D	RIVET AND SQUARE ALUMINUM PLATE IN TOP OF CURB, NORTHEAST CORNER OF MOUNTAIN VISTA ST. AND KELLY AVE. AT EXISTING NORTH END OF CURB.	34				LOST 2003
22	6C12 32C4	584.507	F N D	RIVET AND SQUARE ALUMINUM PLATE IN TOP OF CURB, EAST SIDE OF MOUNTAIN VISTA ST. NORTH END OF CURB AT NORTHWEST PROPERTY CORNER FOR 6150 SUNSET RD. 340' SOUTH OF PATRICK LANE.	35	6C12 30NWW6	601.859	F N D	2" DOME BRASS CAP IN TOP OF CURB, NORTHEAST CORNER OF PECOS RD. AND RENO AVE. NEAR THE PC OF PECOS RD. STAMPED "RLS 5835, 64.39 RM BM 6C12 30NWW6"
23				LOST 2003	CLARK COUNTY VERTICAL CONTROL v.2003 CLARK COUNTY SURVEYOR'S OFFICE 5051 SOUTH PARADISE ROAD LAS VEGAS, NEVADA 89119 (702) 455-0640				
24				LOST 2003					
					CONVERSION FACTOR: METERS X $\left(\frac{3937}{1200}\right)$ = U.S. SURVEY FEET REVISED 2003				
					SHEET 2 OF 4 21-62 SW				

No.	STATION	ELEVATION (METERS)		DESCRIPTION	No.	STATION	ELEVATION (METERS)		DESCRIPTION
36	6C12 30W4	594.157	F N D	2" DOME BRASS CAP IN TOP OF CURB, NORTHEAST CORNER OF HACIENDA AVE. AND PECOS RD. NEAR THE PC OF PECOS RD. STAMPED "RLS 5835, 72.39 RM BM 6C12 30W4"	49	4C12 30S4	577.520	F N D	RIVET AND SQUARE ALUMINUM PLATE IN TOP OF CURB, NORTHWEST CORNER OF RUSSELL RD. AND SANDHILL RD. 20' NORTH OF THE PC OF SANDHILL RD.
37	6C12 19SWW6	592.451	F N D	2" DOME BRASS CAP IN TOP OF CURB, NORTHEAST CORNER OF TOMPKINS AVE AND PECOS RD. NEAR THE PC OF PECOS RD. STAMPED "RLS 5835, 72.64 RM BM 6C12 19SWW6"	50	7C12 31NNW6	583.570	F N D	RIVET AND SQUARE ALUMINUM PLATE IN TOP OF CURB, SOUTHEAST CORNER OF RUSSELL RD. AND PEARL ST. NEAR THE PC OF RUSSELL RD.
38	6C12 30SWW6	593.598	F N D	2" DOME BRASS CAP IN TOP OF CURB, NORTHEAST CORNER OF RAWHIDE ST. AND PECOS RD. NEAR THE PC OF PECOS RD. STAMPED "RLS 5835, 59.41 RM BM 6C12 30SWW6"	51	0C12 32NEE6	581.084	F N D	RIVET AND SQUARE ALUMINUM PLATE IN TOP OF CURB, NEAR NORTHEAST FENCE CORNER OF VO-TECH SCHOOL BALL FIELDS.
39				LOST 2003	52	WHITNEY #2 1972	581.556	F N D	USC&GS BRASS CAP, WHITNEY #2, 1972. LOCATED ON THE TOP OF THE NORTHEAST PORTION OF THE MESA THAT VO-TECH IS ON. ALSO 70' FROM PP #67761NP, (1 OF 3 POWER POLES SET ON WEST EDGE OF MESA).
40	6C12 31NWW6	588.318	F N D	2" DOME BRASS CAP IN TOP OF CURB, NORTHEAST CORNER OF OQUENDO RD. AND PECOS RD. NEAR THE PC OF PECOS RD. STAMPED "RLS 5835, 79.51 RM BM 6C12 31NWW6"	53	4C12 21NNE6	513.289	F N D	RIVET AND SQUARE ALUMINUM PLATE IN TOP OF CURB, NORTH SIDE OF FLAMINGO RD. NEAR THE ALIGNMENT OF JIMMY DURANTE BLVD.
41	6C12 31W4	590.232	F N D	2" DOME BRASS CAP IN TOP OF CURB, NORTHEAST CORNER OF PATRICK LANE AND PECOS RD. NEAR THE PC OF PECOS RD. STAMPED "RLS 5835, 74.72 RM BM 6C12 31W4"	54	7C12 20NES 1997	520.520	S E T	RIVET AND ROUND ALUMINUM PLATE IN TOP OF CURB, NORTHWEST CORNER OF BOULDER HWY. AND NELLIS BLVD. NEAR THE PC OF BOULDER HWY.
42				LOST 2003	55	8C12 29S6 1998	549.373	S E T	RIVET AND ROUND ALUMINUM PLATE IN TOP OF CURB, NORTHEAST CORNER OF MOUNTAIN VISTA ST. AND RAWHIDE ST. NEAR THE PC OF MOUNTAIN VISTA ST.
43	7C12 20S6	531.477		RIVET AND SQUARE ALUMINUM PLATE IN TOP OF CURB, NORTHEAST CORNER OF MOUNTAIN VISTA ST. AND DENNIS WAY. NEAR THE PC OF MOUNTAIN VISTA ST.	56	8C12 32N6 1998	562.047	S E T	RIVET AND ROUND ALUMINUM PLATE IN TOP OF CURB, ON EAST SIDE OF CENTERLINE ISLAND ON MOUNTAIN VISTA ST. AT OQUENDO RD. ALIGNMENT.
44	7C12 20C4	530.321	F N D	RIVET AND SQUARE ALUMINUM PLATE IN TOP OF CURB, NORTHEAST CORNER OF MOUNTAIN VISTA ST. AND HARMON AVE. NEAR THE PC OF MOUNTAIN VISTA ST.	57	8C12 19W4 1998	590.065	S E T	RIVET AND ROUND ALUMINUM PLATE IN TOP OF CURB, NORTHEAST CORNER OF PECOS RD. AND HARMON AVE. NEAR THE PC OF PECOS RD.
45	7C12 20N6	530.469	F N D	RIVET AND SQUARE ALUMINUM PLATE IN TOP OF CURB, NORTHEAST CORNER OF MOUNTAIN VISTA ST. AND ROCHELLE AVE. NEAR THE PC OF MOUNTAIN VISTA ST.	58	8C12 31SWW6 1998	592.880	S E T	RIVET AND ROUND ALUMINUM PLATE IN TOP OF CURB, NORTHEAST CORNER OF PECOS RD. AND POST RD. NEAR THE PC OF PECOS RD.
46				LOST 2003	59	4C12 31S6	585.892	F N D	RIVET AND SQUARE ALUMINUM PLATE IN TOP OF CURB, NORTHEAST CORNER SANDHILL RD. AND POST RD. NEAR THE PC OF SANDHILL RD.
47				LOST 2003	CLARK COUNTY VERTICAL CONTROL v.2003 CLARK COUNTY SURVEYOR'S OFFICE 5051 SOUTH PARADISE ROAD LAS VEGAS, NEVADA 89119 (702) 455-0640				
48	7C12 31NNE6	573.521	F N D	RIVET AND SQUARE ALUMINUM PLATE IN TOP OF CURB, SOUTHEAST CORNER OF RUSSELL RD. AND ANNIE OAKLEY DR. NEAR THE PC OF RUSSELL RD.					
					CONVERSION FACTOR: METERS X $\left(\frac{3937}{1200}\right)$ = U.S. SURVEY FEET REVISED 2003 SHEET 3 OF 4 21-62 SW				

No.	STATION	ELEVATION (METERS)	DESCRIPTION	No.	STATION	ELEVATION (METERS)	DESCRIPTION
60	4C12 31C4	583.036	F N D RIVET AND SQUARE ALUMINUM PLATE IN TOP OF CURB, NORTHEAST CORNER OF SANDHILL RD. AND PATRICK LN. NEAR THE PC OF PATRICK LN.	73			
61	2C12 31N6	580.187	F N D RIVET AND SQUARE ALUMINUM PLATE IN TOP OF CURB, NORTHEAST CORNER OF SANDHILL RD. AND OQUENDO RD. NEAR THE PC OF SANDHILL RD.	74			
62	4C12 30S6	576.328	F N D RIVET AND SQUARE ALUMINUM PLATE IN TOP OF CURB, NORTHEAST CORNER OF SANDHILL RD. AND RAWHIDE ST. NEAR THE PC OF SANDHILL RD.	75			
63	4C12 30C4	580.605	F N D RIVET AND SQUARE ALUMINUM PLATE IN TOP OF CURB, NORTHEAST CORNER OF SANDHILL RD. AND HACIENDA AVE. NEAR THE PC OF SANDHILL RD.	76			
64			LOST 2003	77			
65	0C12 29SWS 2000	566.208	S E T RIVET AND ROUND ALUMINUM PLATE IN TOP OF CURB, NORTHEAST CORNER OF RUSSELL RD. AND LAMB BLVD. NEAR THE PC OF RUSSELL RD.	78			
66	0C12 29SSW6 2000	558.200	S E T RIVET AND ROUND ALUMINUM PLATE IN TOP OF CURB, NORTHEAST CORNER OF RUSSELL RD. AND PALM AVE. NEAR THE PC OF RUSSELL RD.	79			
67	0C12 29S4 2000	554.292	S E T RIVET AND ROUND ALUMINUM PLATE IN TOP OF CURB, NORTHEAST CORNER OF RUSSELL RD. AND MOUNTAIN VISTA ST. NEAR THE PC OF MOUNTAIN VISTA ST.	80			
68	0C12 30SWS 2000	590.044	S E T RIVET AND ROUND ALUMINUM PLATE IN TOP OF CURB, NORTHEAST CORNER OF RUSSELL RD. AND PECOS RD. NEAR THE PC OF RUSSELL RD.	81			
69	7C12 21W6 1997	519.834	F N D RIVET AND ROUND ALUMINUM PLATE IN TOP OF CURB, NORTHEAST CORNER OF BOULDER HWY. AND HARMON AVE. NEAR THE PC OF BOULDER HWY.	82			
70				83			
71				CLARK COUNTY VERTICAL CONTROL v.2003 CLARK COUNTY SURVEYOR'S OFFICE 5051 SOUTH PARADISE ROAD LAS VEGAS, NEVADA 89119 (702) 455-0640			
72							
				CONVERSION FACTOR: METERS X $\left(\frac{3937}{1200}\right)$ = U.S. SURVEY FEET REVISED 2003 SHEET 4 OF 4 21-62 SW			