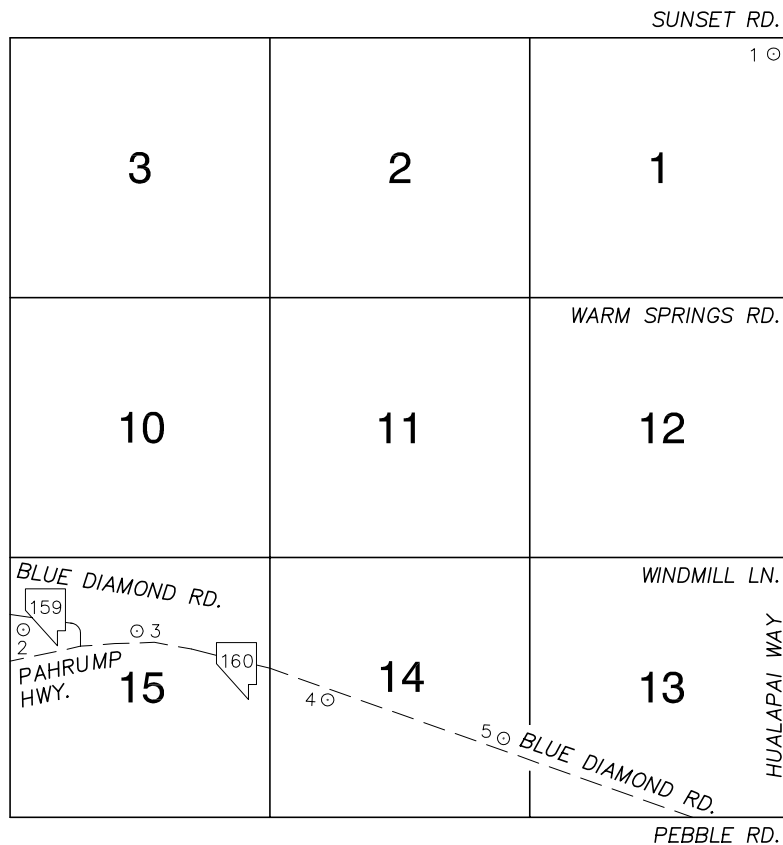


Township 22 South, Range 59 East Northeast Quarter



NORTH AMERICAN VERTICAL
DATUM OF 1988
- ALL ELEVATIONS IN METERS -

No.	STATION	ELEVATION (METERS)	DESCRIPTION
1	8C29 1NES 1998	810.523	S E T RIVET AND ROUND ALUMINUM PLATE IN A CONCRETE MONUMENT, SOUTHWEST QUADRANT OF HUALAPAI WAY AND SUNSET RD.
2	8C29 15NWW6 1998	978.972	F N D NDOT BRASS CAP IN A CONCRETE MONUMENT, SOUTH OF STATE ROUTE 159, 50' WEST OF CENTERLINE OF HICKEY LN. NDOT STATION E 29+44.14.
3	8C29 15C4 1998	956.224	S E T RIVET AND ROUND ALUMINUM PLATE IN A CONCRETE HEADWALL, 70' NORTH OF CENTERLINE OF BLUE DIAMOND RD. (STATE ROUTE 160), 0.7 MILES WEST OF FORTNEY RD.
4	8C29 14W6 1998	936.882	F N D NDOT BRASS CAP IN A CONCRETE MONUMENT, 40' SOUTH OF CENTERLINE OF BLUE DIAMOND RD. (STATE ROUTE 160), 250' WEST OF FORTNEY RD. NDOT STATION X 520+19.27 POT.
5	8C29 14SEE6 1998	920.748	S E T RIVET AND ROUND ALUMINUM PLATE IN A CONCRETE HEADWALL, NORTH SIDE OF BLUE DIAMOND RD. (STATE ROUTE 160), 300' WEST OF KULKA RD.
6			
7			
8			
9			
10			
11			

CLARK COUNTY VERTICAL CONTROL v.2003

CLARK COUNTY SURVEYOR'S OFFICE
5051 SOUTH PARADISE ROAD
LAS VEGAS, NEVADA 89119
(702) 455-0640

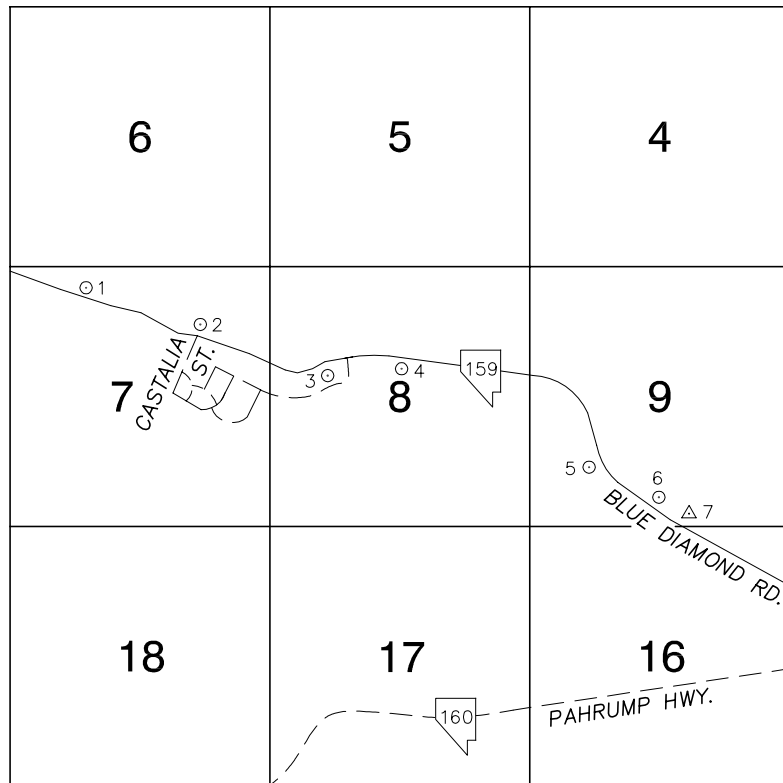
CONVERSION FACTOR:
METERS X $\left(\frac{3937}{1200}\right)$ = U.S. SURVEY FEET

REVISED 2003

SHEET
1 OF 1

22-59
NE

Township 22 South, Range 59 East Northwest Quarter



NORTH AMERICAN VERTICAL
DATUM OF 1988
- ALL ELEVATIONS IN METERS -

No.	STATION	ELEVATION (METERS)	DESCRIPTION
1	8C29 7NW6 1998	1040.839	FND NDOT BRASS CAP IN CONCRETE MONUMENT, 50' NORTHERLY OF CENTERLINE OF STATE ROUTE 159, 3.35 MILES NORTHWESTERLY OF INTERSECTION OF STATE ROUTES 159 AND 160. NDOT STATION E1 190+91.15 PT.
2	8C29 7NE6 1998	1033.048	FND NDOT BRASS CAP IN CONCRETE MONUMENT, 35' NORTHEAST OF CENTERLINE OF STATE ROUTE 159, 3.0 MILES NORTHWESTERLY OF INTERSECTION OF STATE ROUTES 159 AND 160. NDOT STATION E 169+99.98 PC.
3	8C29 8W6 1998	1022.244	FND NDOT BRASS CAP IN CONCRETE MONUMENT, 45' SOUTH OF CENTERLINE OF STATE ROUTE 159, AT MILE MARKER 3, 2.55 MILES NORTHWESTERLY OF INTERSECTION OF S.R. 159 AND 160. NDOT STATION E 147+25.75 POC.
4	8C29 8C4 1998	1008.692	FND NDOT BRASS CAP IN CONCRETE MONUMENT, SOUTH SIDE OF BLUE DIAMOND RD. 2.15 MILES NORTHWESTERLY OF INTERSECTION OF STATE ROUTES 159 AND 160. NDOT STATION E 126+98.18 PC.
5	8C29 9SW6 1998	993.372	FND NDOT BRASS CAP IN CONCRETE MONUMENT, 50' SOUTHWEST OF CENTERLINE OF STATE ROUTE 159, 1.4 MILES NORTHWESTERLY OF INTERSECTION OF STATE ROUTES 159 AND 160. NDOT STATION E 84+99.34 PC.
6	8C29 9S4 1998	988.311	FND NDOT BRASS CAP IN CONCRETE MONUMENT, 50' NORTH OF CENTERLINE OF STATE ROUTE 159, 0.85 MILES WEST OF INTERSECTION OF STATE ROUTES 159 AND 160. NDOT STATION E 57+01.61 POT.
7	156 GWM 1950	988.205	FND USGS BRASS CAP IN CONCRETE MONUMENT, 90' NORTH OF CENTERLINE OF STATE ROUTE 159 AND 200' EAST OF BM 8C29 9S4 1998.
8			
9			
10			
11			

CLARK COUNTY VERTICAL CONTROL v.2003

CLARK COUNTY SURVEYOR'S OFFICE
5051 SOUTH PARADISE ROAD
LAS VEGAS, NEVADA 89119
(702) 455-0640

CONVERSION FACTOR:
METERS X $\left(\frac{3937}{1200}\right)$ = U.S. SURVEY FEET

REVISED 2003

SHEET
1 OF 1

22-59
NW

Township 22 South, Range 59 East Southeast Quarter

PEBBLE RD.

BLUE
DIAMOND RD. /
ORDUNO ST.

22	23	24
27	26	25
34	35	36

HUALAPAI WAY

NORTH AMERICAN VERTICAL
DATUM OF 1988
— ALL ELEVATIONS IN METERS —

No.	STATION	ELEVATION (METERS)	DESCRIPTION
1	8C29 24N4 1998	901.232	S E T RIVET AND ROUND ALUMINUM PLATE IN A CONCRETE HEADWALL, NORTH SIDE OF BLUE DIAMOND RD. NEAR THE ALIGNMENT OF ORDUNO ST.
2			
3			
4			
5			
6			
7			
8			
9			
10			
11			

CLARK COUNTY VERTICAL CONTROL v.2003

CLARK COUNTY SURVEYOR'S OFFICE
5051 SOUTH PARADISE ROAD
LAS VEGAS, NEVADA 89119
(702) 455-0640

CONVERSION FACTOR:
METERS X $\left(\frac{3937}{1200}\right)$ = U.S. SURVEY FEET

REVISED 2003

SHEET
1 OF 1

22-59
SE