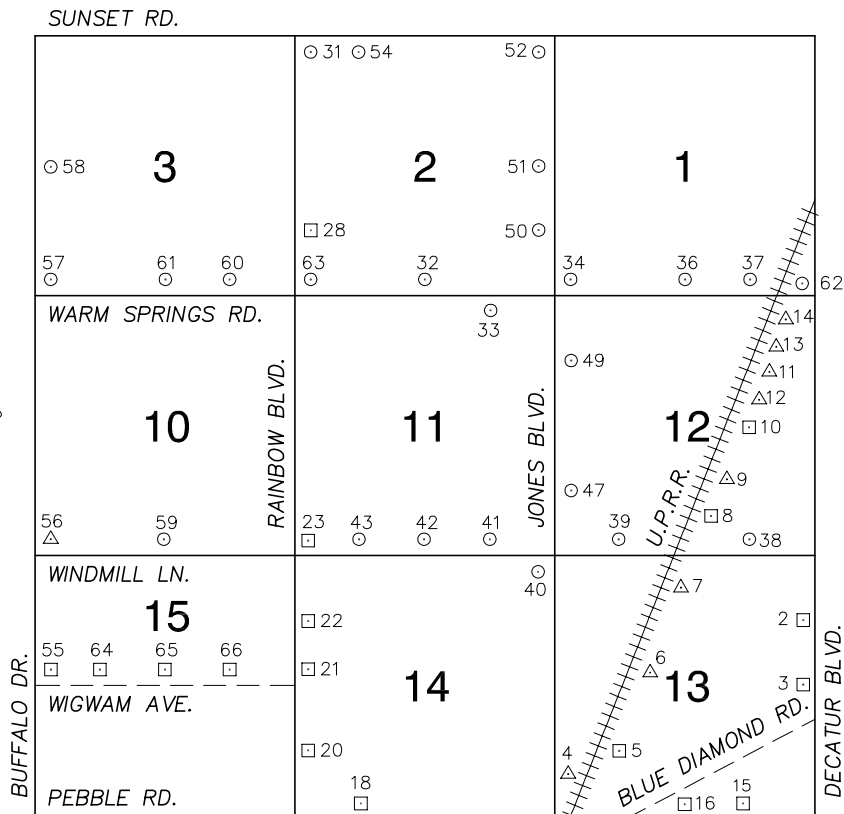


Township 22 South, Range 60 East Northeast Quarter



NORTH AMERICAN VERTICAL
DATUM OF 1988
- ALL ELEVATIONS IN METERS -

No.	STATION	ELEVATION (METERS)	DESCRIPTION
1			LOST 2003
2	2C20 13NEE6	725.118	F N D RIVET AND SQUARE ALUMINUM PLATE IN AN ELECTRICAL TRANSFORMER PAD, WEST SIDE OF DECATUR BLVD. IN FRONT OF 8339 DECATUR BLVD. 300' FEET SOUTH OF SHELBOURNE AVE.
3	2C20 13E4	725.889	F N D RIVET AND SQUARE ALUMINUM PLATE IN AN ELECTRICAL TRANSFORMER PAD, 200' WEST OF DECATUR BLVD. ON THE NORTH SIDE OF WIGWAM AVE.
4	W 366 1963		F N D USC&GS BRASS CAP IN TOP OF THE SOUTHWEST ABUTMENT OF A RAILROAD BRIDGE, 0.15 MILES NORTHEAST OF PEBBLE RD., 2.5' BELOW RAIL (UNDER NEW CONCRETE ABUTMENT ***NOT ABLE TO OCCUPY***).
5	2C20 13SWW6	746.817	F N D 5/8" REBAR IN DRILLED HOLE WITH EPOXY GLUE WITH A SQUARE ALUMINUM PLATE WIRED TO IT, IN TOP OF THE NORTHWEST WING WALL OF A RAILROAD BRIDGE, 0.39 MILES NORTHEAST OF PEBBLE RD. 5.5' BELOW RAIL.
6	E 170 1935	743.188	F N D USC&GS BRASS CAP IN CONCRETE, 0.67 MILES NORTHEAST OF PEBBLE RD. 41' EAST OF EAST RAIL AND 5.5 BELOW RAIL.
7	V 366 1963	741.576	F N D USC&GS BRASS CAP IN TOP OF THE NORTHEAST ABUTMENT OF A RAILROAD BRIDGE, 0.94 MILES NORTHEAST OF PEBBLE RD, ABOUT 0.5' BELOW THE RAIL.
8	2C20 12S6	734.766	F N D 5/8" REBAR WITH SQUARE ALUMINUM PLATE WIRED ON IT, NORTHEAST WING WALL OF A RAILROAD BRIDGE, 1.34 MILES NORTHEAST PEBBLE RD. ABOUT 6.5' BELOW THE RAIL.
9	M 1949	732.746	F N D 3 1/2" USC&GS BRASS CAP ON 3 1/2" IRON PIPE 1.45 MILES NORTHEAST OF PEBBLE RD. 75' EAST AND 4.5' BELOW RAILROAD TRACKS, STAMPED: B.M. —
10	2C20 12E6	730.772	F N D 5/8" REBAR WITH SQUARE ALUMINUM PLATE WIRED ON IT, NORTHEAST WING WALL OF A RAILROAD BRIDGE, 1.63 MILES NORTHEAST PEBBLE RD. 4.5' BELOW THE RAIL.
11	JERK 1957	727.574	F N D USC&GS BRASS CAP IN CONCRETE, 1.86 MILES NORTHEAST OF PEBBLE RD, 61' EAST OF RAILROAD TRACKS.

CLARK COUNTY VERTICAL CONTROL v.2003

CLARK COUNTY SURVEYOR'S OFFICE
5051 SOUTH PARADISE ROAD
LAS VEGAS, NEVADA 89119
(702) 455-0640

CONVERSION FACTOR:

METERS X $\left(\frac{3937}{1200}\right)$ = U.S. SURVEY FEET

REVISED 2003

SHEET
1 OF 4

22-60
NE

No.	STATION	ELEVATION (METERS)		DESCRIPTION	No.	STATION	ELEVATION (METERS)		DESCRIPTION
12	JERK NO. 1 1957	727.677	F N D	USC&GS BRASS CAP IN CONCRETE, 37' SOUTHWEST OF STATION JERK.	25				LOST 2003
13	JERK NO. 2 1957	727.535	F N D	USC&GS BRASS CAP IN CONCRETE, 32.5' NORTH OF STATION JERK.	26				LOST 2003
14	U 366 1936	725.820	F N D	USC&GS BRASS CAP IN TOP OF NORTHEAST ABUTMENT OF RAILROAD TRACK BRIDGE, 1.95' MILES NORTHEAST OF PEBBLE RD. 3.5' BELOW RAIL	27				LOST 2003
15	2C20 13SSE6	732.842	F N D	RIVET AND SQUARE ALUMINUM PLATE IN A CONCRETE MONUMENT, NORTHWEST CORNER OF PEBBLE RD. AND EDMOND ST., UNDER THE HIGH POWER LINES	28	2C20 2SWW6	760.355	F N D	RIVET AND SQUARE ALUMINUM PLATE IN A CONCRETE MONUMENT, NORTHEAST QUADRANT OF RAINBOW BLVD. AND ARBY AVE.
16	2C20 13S4	739.138	F N D	RIVET AND SQUARE ALUMINUM PLATE IN A CONCRETE MONUMENT, 300' SOUTH OF BLUE DIAMOND RD. AND 45' WEST OF LINDELL RD. 5' NORTH OF POWER POLE #15159T.	29				LOST 2003
17				LOST 2003	30				LOST 2003
18	2C20 14SSW6	772.963	F N D	RIVET AND SQUARE ALUMINUM PLATE IN NORTHEAST WINGWALL OF A REINFORCED CONCRETE BOX, NORTH SIDE OF PEBBLE RD. AT REDWOOD ST.	31	7C20 2NWS 1997	748.668	S E T	RIVET AND ROUND ALUMINUM PLATE IN A CONCRETE BASE OF A METAL POWER POLE, SOUTHEAST CORNER OF RAINBOW BLVD. AND SUNSET RD. POWER POLE #39150 QE-13.
19				LOST 2003	32	7C20 2S4 1997	754.995	S E T	RIVET AND ROUND ALUMINUM PLATE IN AN ELECTRICAL PAD NORTH SIDE OF WARM SPRINGS RD. 350' WEST OF TORREY PINES RD.
20	2C20 14SSW6	779.413	F N D	RIVET AND SQUARE ALUMINUM PLATE IN A CONCRETE MONUMENT, NORTHEAST QUADRANT OF RAINBOW BLVD. AND FORD AVE.	33	7C20 11NNE6 1997	747.892	S E T	RIVET AND ROUND ALUMINUM PLATE IN A CONCRETE MONUMENT, SOUTHWEST QUADRANT OF WARM SPRINGS RD. AND EL CAMINO RD.
21	2C20 14W4	779.131	F N D	RIVET AND SQUARE ALUMINUM PLATE IN A CONCRETE MONUMENT, NORTHEAST QUADRANT OF RAINBOW BLVD. AND WIGWAM AVE.	34	7C20 1SWS 1997	740.009	S E T	RIVET AND ROUND ALUMINUM PLATE IN AN ELECTRICAL PAD NORTHEAST CORNER OF JONES BLVD. AND WARM SPRINGS RD.
22	2C20 14NWW6	778.855	F N D	RIVET AND SQUARE ALUMINUM PLATE IN A CONCRETE MONUMENT, NORTHEAST QUADRANT OF RAINBOW BLVD. AND SHELBOURNE AVE.	35				LOST 2003
23	2C20 11SWS	777.386	F N D	RIVET AND SQUARE ALUMINUM PLATE IN A CONCRETE MONUMENT, NORTHEAST QUADRANT OF RAINBOW BLVD. AND WINDMILL LN.	CLARK COUNTY VERTICAL CONTROL v.2003 CLARK COUNTY SURVEYOR'S OFFICE 5051 SOUTH PARADISE ROAD LAS VEGAS, NEVADA 89119 (702) 455-0640				
24				LOST 2003					
					CONVERSION FACTOR: METERS X $\left(\frac{3937}{1200}\right)$ = U.S. SURVEY FEET REVISED 2003 SHEET 2 OF 4 22-60 NE				

No.	STATION	ELEVATION (METERS)	DESCRIPTION		No.	STATION	ELEVATION (METERS)	DESCRIPTION	
36	7C20 1S4 1997	729.555	S E T	RIVET AND ROUND ALUMINUM PLATE IN A CONCRETE MONUMENT, NORTHEAST CORNER OF WARM SPRINGS RD. AND LINDELL AVE. NEAR A POWER POLE. # "P78110"	49	7C20 12NWW6 1997	743.854	S E T	RIVET AND ROUND ALUMINUM PLATE IN A CONCRETE MONUMENT, NORTHEAST QUADRANT OF JONES BLVD. AND ELDORADO LN.
37	7C20 1SSE6 1997	724.241	S E T	RIVET AND ROUND ALUMINUM PLATE IN A CONCRETE MONUMENT, NORTHEAST CORNER OF WARM SPRINGS RD. AND EDMOND ST. NEAR A POWER POLE. # "P78116"	50	7C20 2SEE6 1997	738.116	S E T	RIVET AND ROUND ALUMINUM PLATE IN A CONCRETE MONUMENT, NORTHWEST QUADRANT OF JONES BLVD. AND ARBY ST.
38	7C20 12SSE6 1997	730.580	S E T	RIVET AND ROUND ALUMINUM PLATE IN A CONCRETE MONUMENT, NORTHEAST QUADRANT OF WINDMILL LN. AND EDMOND ST.	51	7C20 2E4 1997	734.793	S E T	RIVET AND ROUND ALUMINUM PLATE IN A CONCRETE MONUMENT, SOUTHWEST QUADRANT OF JONES BLVD. AND MAULE AVE.
39	7C20 12SSW6 1997	743.971	S E T	RIVET AND ROUND ALUMINUM PLATE IN A CONCRETE MONUMENT, NORTHEAST QUADRANT OF WINDMILL LN. AND DUNEVILLE RD.	52	7C20 2NES 1997	727.286	S E T	RIVET AND ROUND ALUMINUM PLATE IN A CONCRETE MONUMENT, SOUTHWEST QUADRANT OF JONES BLVD. AND SUNSET RD. NEAR A METAL POWER POLE.
40	7C20 14NES 1997	750.961	S E T	RIVET AND ROUND ALUMINUM PLATE IN A CONCRETE MONUMENT, SOUTHWEST QUADRANT OF WINDMILL LN. AND JONES BLVD.	53				LOST 2003
41	7C20 11SSE6 1997	757.156	S E T	RIVET AND ROUND ALUMINUM PLATE IN A CONCRETE MONUMENT, NORTHEAST QUADRANT OF WINDMILL LN. AND EL CAMINO RD.	54	7C20 2NNW6 1997	743.172	S E T	RIVET AND ROUND ALUMINUM PLATE IN A CONCRETE MONUMENT, SOUTHWEST QUADRANT OF SUNSET RD. AND REDWOOD ST.
42	7C20 11S4 1997	764.229	S E T	RIVET AND ROUND ALUMINUM PLATE IN A CONCRETE MONUMENT, NORTHWEST QUADRANT OF WINDMILL LN. AND TORREY PINES DR.	55	4C20 15W4	806.140	F N D	RIVET AND SQUARE ALUMINUM PLATE IN NORTH END OF A HEADWALL, NORTHEAST QUADRANT OF BUFFALO DR. AND WIGWAM AVE.
43	7C20 11SSW6 1997	770.748	S E T	RIVET AND ROUND ALUMINUM PLATE IN A CONCRETE MONUMENT, NORTHEAST QUADRANT OF WINDMILL LN. AND REDWOOD ST.	56	GIS 855	804.255	F N D	2" BRASS CAP IN A CONCRETE MONUMENT, NORTHEAST QUADRANT OF BUFFALO DR. AND WINDMILL LN., STAMPED: "RLS 4743 855-60-22 1989"
44				LOST 2003	57	8C20 3SWS 1998	786.535	S E T	RIVET AND ROUND ALUMINUM PLATE IN A CONCRETE MONUMENT, NORTHEAST QUADRANT OF BUFFALO DR. AND WARM SPRINGS RD.
45				LOST 2003	58	8C20 3W4 1998	778.784	S E T	RIVET AND ROUND ALUMINUM PLATE IN A CONCRETE MONUMENT, NORTHEAST QUADRANT OF BUFFALO DR. AND MAULE AVE.
46				LOST 2003	59	8C20 10S4 1998	790.330	S E T	RIVET AND ROUND ALUMINUM PLATE IN A CONCRETE MONUMENT, NORTHEAST QUADRANT OF WINDMILL LN. AND TENAYA AVE.
47	7C20 12SWW6 1997	749.413	S E T	RIVET AND ROUND ALUMINUM PLATE IN A CONCRETE MONUMENT, NORTHEAST QUADRANT OF JONES BLVD. AND MESA VERDE LN.	CLARK COUNTY VERTICAL CONTROL v.2003 CLARK COUNTY SURVEYOR'S OFFICE 5051 SOUTH PARADISE ROAD LAS VEGAS, NEVADA 89119 (702) 455-0640				
48				LOST 2003					
					REVISED 2003		SHEET 3 OF 4		22-60 NE

No.	STATION	ELEVATION (METERS)	DESCRIPTION		No.	STATION	ELEVATION (METERS)	DESCRIPTION	
60	8C20 3SSE6 1998	770.772	S E T	RIVET AND ROUND ALUMINUM PLATE IN TOP OF CURB, NORTHWEST CORNER OF WARM SPRING RD. AND MONTESSOURI ST. NEAR THE PC OF WARM SPRINGS RD.	73				
61	8C20 3S4 1998	775.893	S E T	RIVET AND ROUND ALUMINUM PLATE IN A CONCRETE MONUMENT, NORTHEAST QUADRANT OF WARM SPRINGS RD. AND TENAYA WAY.	74				
62	7C20 1SES 1997	719.785	S E T	RIVET AND ROUND ALUMINUM PLATE IN A CONCRETE MONUMENT, NORTHWEST QUADRANT OF WARM SPRINGS RD. AND DECATUR BLVD. NEAR THE SOUTHEAST FENCE CORNER OF THE WATER DISTRICT YARD.	75				
63	7C20 2SWS 1997	765.149	S E T	RIVET AND ROUND ALUMINUM PLATE IN THE CONCRETE BASE OF A METAL POWER POLE, NORTHEAST CORNER OF RAINBOW BLVD. AND WARM SPRINGS RD. POLE # "95650"	76				
64	4C20 15W6	801.788	F N D	RIVET AND SQUARE ALUMINUM PLATE IN A ELECTRICAL, TRANSFORMER PAD, NORTH SIDE OF WIGWAM AVE. 250' EAST OF JERLYN ST.	77				
65	4C20 15C4	793.110	F N D	RIVET AND SQUARE ALUMINUM PLATE IN A CONCRETE MONUMENT, NORTHEAST QUADRANT OF WIGWAM AVE. AND TENAYA WAY.	78				
66	4C20 15E6	786.482	F N D	RIVET AND SQUARE ALUMINUM PLATE IN A CONCRETE MONUMENT, NORTH SIDE OF WIGWAM AVE. AND 1300' WEST OF RAINBOW BLVD.	79				
67					80				
68					81				
69					82				
70					83				
71					CLARK COUNTY VERTICAL CONTROL v.2003 CLARK COUNTY SURVEYOR'S OFFICE 5051 SOUTH PARADISE ROAD LAS VEGAS, NEVADA 89119 (702) 455-0640				
72									
					CONVERSION FACTOR: METERS X $\left(\frac{3937}{1200}\right)$ = U.S. SURVEY FEET <div> REVISED 09/01/2006 </div> <div> SHEET 4 OF 4 </div> <div> 22-60 NE </div>				