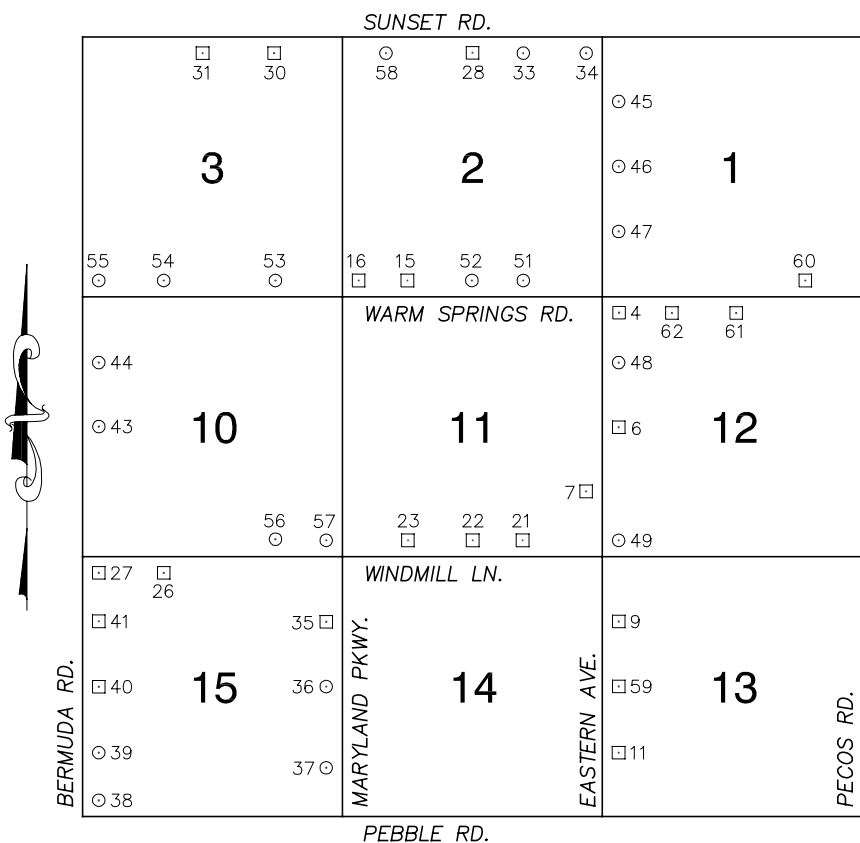


Township 22 South, Range 61 East Northeast Quarter



NORTH AMERICAN VERTICAL
DATUM OF 1988
- ALL ELEVATIONS IN METERS -

| No. | STATION | ELEVATION (METERS) | DESCRIPTION |
|---|----------------|--|---|
| 1 | | | LOST 2003 |
| 2 | | | LOST 2003 |
| 3 | | | LOST 2003 |
| 4 | 8C21 12NWS | 621.472 | F N D RIVET AND SQUARE ALUMINUM PLATE IN TOP OF CURB, SOUTHEAST CORNER OF EASTERN AVE. AND WARM SPRINGS RD. NEAR THE PC OF EASTERN AVE. |
| 5 | | | LOST 2003 |
| 6 | 8C21 12W4 | 625.762 | F N D RIVET AND SQUARE ALUMINUM PLATE IN TOP OF CURB, NORTHEAST CORNER OF EASTERN AVE. AND ROBINDALE RD. NEAR THE PC OF EASTERN AVE. |
| 7 | 7C21 11SEE6 | 630.735 | F N D RIVET AND SQUARE ALUMINUM PLATE IN TOP OF CURB, NORTHWEST CORNER OF EASTERN AVE. AND BLUE GRASS LN. NEAR THE PC OF EASTERN AVE. |
| 8 | | | LOST 2003 |
| 9 | 8C21 13NWW6 | 647.195 | F N D RIVET AND SQUARE ALUMINUM PLATE IN TOP OF CURB, NORTHEAST CORNER OF EASTERN AVE. AND SHENANDOAH AVE. NEAR THE PC OF EASTERN AVE. |
| 10 | | | LOST 2003 |
| 11 | 4C21 13SWW6 | 650.888 | F N D RIVET AND SQUARE ALUMINUM PLATE IN TOP OF CURB, ON THE EAST SIDE OF EASTERN AVE. AT FORD AVE. |
| CLARK COUNTY VERTICAL CONTROL v.2003 | | | |
| CLARK COUNTY SURVEYOR'S OFFICE 5051 SOUTH PARADISE ROAD LAS VEGAS, NEVADA 89119 (702) 455-0640 | | CONVERSION FACTOR: METERS X $\left(\frac{3937}{1200}\right)$ = U.S. SURVEY FEET | |
| | | REVISED 08/01/2003 | SHEET 1 OF 4 22-61 NE |

| No. | STATION | ELEVATION (METERS) | DESCRIPTION | | No. | STATION | ELEVATION (METERS) | DESCRIPTION | | | | |
|-----|----------------|-----------------------|-------------|--|---|-----------------------|-----------------------|-------------|---|--|--|--|
| 12 | | | | LOST 2003 | 25 | 0C21 15N4 | 648.622 | F N D | RIVET AND SQUARE ALUMINUM PLATE IN TOP OF CURB, SOUTHWEST CORNER OF WINDMILL LN. AND POLLOCK DR. NEAR THE PC OF WINDMILL LN. | | | |
| 13 | | | | LOST 2003 | 26 | 0C21 15NNW6 | 656.486 | F N D | RIVET AND SQUARE ALUMINUM PLATE IN TOP OF CURB, SOUTHEAST CORNER OF WINDMILL LN. AND VISTA PALMAS PKWY. NEAR THE PC OF WINDMILL LN. | | | |
| 14 | | | | LOST 2003 | 27 | 0C21 15NWS | 663.304 | F N D | RIVET AND SQUARE ALUMINUM PLATE IN TOP OF CURB, SOUTHEAST CORNER OF WINDMILL LN. AND BERMUDA RD. NEAR THE PC OF WINDMILL LN. | | | |
| 15 | 8C21 2SSW6 | 628.564 | F N D | RIVET AND SQUARE ALUMINUM PLATE IN TOP OF CURB, NORTHEAST CORNER OF WARM SPRINGS RD. AND TAMARUS ST. NEAR THE PC OF WARM SPRINGS RD. | 28 | 6C21 2N4 | 626.417 | F N D | RIVET AND SQUARE ALUMINUM PLATE IN TOP OF CURB, SOUTH SIDE OF SUNSET RD. IN FRONT OF 1651 SUNSET RD., JUST WEST OF A DRIVEWAY IN FRONT OF PT'S PUB. | | | |
| 16 | 8C21 2SWS | 631.698 | F N D | RIVET AND SQUARE ALUMINUM PLATE IN TOP OF CURB, NORTH SIDE OF WARM SPRINGS RD., JUST EAST OF THE PROJECTION OF MARILISSA LN. | 29 | | | | LOST 2003 | | | |
| 17 | | | | LOST 2003 | 30 | 6C21 3NNE6 | 636.728 | F N D | RIVET AND SQUARE ALUMINUM PLATE IN TOP OF CURB, SOUTHEAST CORNER OF SUNSET RD. AND PARADISE RD. NEAR THE PC OF SUNSET RD. | | | |
| 18 | | | | LOST 2003 | 31 | 6C21 3N4 | 643.507 | F N D | RIVET AND SQUARE ALUMINUM PLATE IN TOP OF CURB, SOUTHEAST CORNER OF SUNSET RD. AND GRIER DR. NEAR THE PC OF SUNSET RD. | | | |
| 19 | | | | LOST 2003 | 32 | | | | LOST 2003 | | | |
| 20 | | | | LOST 2003 | 33 | 7C21 2NNE6 1997 | 620.861 | S E T | RIVET AND ROUND ALUMINUM PLATE IN TOP OF CURB, SOUTHWEST CORNER OF SUNSET RD. AND SURREY ST. NEAR THE PC OF SUNSET RD. | | | |
| 21 | 0C21 11SSE6 | 640.317 | F N D | RIVET AND SQUARE ALUMINUM PLATE IN TOP OF CURB, NORTHEAST CORNER OF WINDMILL LN. AND RODEO DR. NEAR THE PC OF WINDMILL LN. | 34 | 7C21 2NES 1997 | 617.026 | S E T | RIVET AND ROUND ALUMINUM PLATE IN TOP OF CURB, SOUTHWEST CORNER OF SUNSET RD. AND EASTERN AVE. NEAR THE PC OF EASTERN AVE. | | | |
| 22 | 0C21 11S4 | 641.572 | F N D | RIVET AND SQUARE ALUMINUM PLATE IN TOP OF CURB, NORTHEAST CORNER OF WINDMILL LN. AND SPENCER ST. NEAR THE PC OF WINDMILL LN. | 35 | 4C21 15NEE6 | 652.431 | F N D | RIVET AND SQUARE ALUMINUM PLATE IN TOP OF CURB, WEST SIDE OF MARYLAND PKWY. NEAR THE SHELBOURNE AVE. ALIGNMENT. | | | |
| 23 | 0C21 11SSW6 | 643.797 | F N D | RIVET AND SQUARE ALUMINUM PLATE IN TOP OF CURB, NORTHWEST CORNER OF WINDMILL LN. AND ASPENDALE DR. NEAR THE PC OF WINDMILL LN. | <div>CLARK COUNTY VERTICAL CONTROL v.2003</div> <div>CLARK COUNTY SURVEYOR'S OFFICE 5051 SOUTH PARADISE ROAD LAS VEGAS, NEVADA 89119 (702) 455-0640</div> <div>CONVERSION FACTOR: METERS X $\left(\frac{3937}{1200}\right)$ = U.S. SURVEY FEET</div> <div>REVISED 08/01/2003</div> <div>SHEET 2 OF 4</div> <div>22-61 NE</div> | | | | | | | |
| 24 | | | | LOST 2003 | | | | | | | | |

| No. | STATION | ELEVATION (METERS) | DESCRIPTION | No. | STATION | ELEVATION (METERS) | DESCRIPTION |
|-----|------------------------|-----------------------|---|--|------------------------|-----------------------|---|
| 36 | 8C21 15E4 1998 | 658.556 | S E T RIVET AND ROUND ALUMINUM PLATE IN TOP OF CURB, SOUTHWEST CORNER OF MARYLAND PKWY. AND WIGWAM AVE. NEAR THE PC OF MARYLAND PKWY. | 49 | 7C21 12SWS 1997 | 638.844 | S E T RIVET AND ROUND ALUMINUM PLATE IN TOP OF CURB, NORTHEAST CORNER OF EASTERN AVE. AND WINDMILL LN. NEAR THE PC OF EASTERN AVE. |
| 37 | 8C21 15SEE6 1998 | 662.475 | S E T RIVET AND ROUND ALUMINUM PLATE IN TOP OF CURB, SOUTHWEST CORNER OF MARYLAND PKWY. AND TORINO AVE. NEAR THE PC OF MARYLAND PKWY. | 50 | | | LOST 2003 |
| 38 | 8C21 15SWS 1998 | 666.756 | S E T RIVET AND ROUND ALUMINUM PLATE IN TOP OF CURB, NORTHEAST CORNER OF BERMUDA RD. AND PEBBLE RD. NEAR THE PC OF BERMUDA RD. | 51 | 7C21 2SSE6 1997 | 625.340 | S E T RIVET AND ROUND ALUMINUM PLATE IN TOP OF CURB, NORTHEAST CORNER OF WARM SPRINGS RD. AND BURNHAM AVE. NEAR THE PC OF WARM SPRINGS RD. |
| 39 | 8C21 15SWW6 1998 | 669.292 | S E T RIVET AND ROUND ALUMINUM PLATE IN TOP OF CURB, NORTHEAST CORNER OF BERMUDA RD. AND CLAUSER AVE. NEAR THE PC OF BERMUDA RD. | 52 | 7C21 2S4 1997 | 627.050 | S E T RIVET AND ROUND ALUMINUM PLATE IN TOP OF CURB, NORTHEAST CORNER OF WARM SPRINGS RD. AND SPENCER ST. NEAR THE PC OF WARM SPRINGS RD. |
| 40 | 4C21 15W4 | 667.956 | F N D RIVET AND SQUARE ALUMINUM PLATE IN TOP OF CURB, EAST SIDE OF BERMUDA RD. 55' SOUTH OF WIGWAM AVE. | 53 | 7C21 3SSE6 1997 | 635.102 | S E T RIVET AND ROUND ALUMINUM PLATE IN TOP OF CURB, NORTHEAST CORNER OF WARM SPRINGS RD. AND PARADISE RD. NEAR THE PC OF WARM SPRINGS RD. |
| 41 | 4C21 15NWW6 | 665.423 | F N D RIVET AND SQUARE ALUMINUM PLATE IN TOP OF CURB, EAST SIDE OF BERMUDA RD. 40' NORTH OF SHELBOURNE AVE. | 54 | 7C21 3SSW6 1997 | 646.292 | S E T RIVET AND ROUND ALUMINUM PLATE IN TOP OF CURB, NORTH SIDE OF WARM SPRINGS RD. 450' EAST OF AMIGO ST., NORTHEAST CORNER OF DRIVEWAY. |
| 42 | | | LOST 2003 | 55 | 7C21 3SWS 1997 | 658.222 | S E T RIVET AND ROUND ALUMINUM PLATE IN TOP OF CURB, NORTHEAST CORNER OF WARM SPRINGS RD. AND BERMUDA RD. NEAR THE PC OF WARM SPRINGS RD. |
| 43 | 8C21 10W4 1998 | 659.885 | S E T RIVET AND ROUND ALUMINUM PLATE IN AN ELECTRICAL PAD, EAST SIDE OF BERMUDA RD. 375' NORTH OF ROBINDALE RD. | 56 | 7C21 10SSE6 1997 | 644.658 | S E T RIVET AND ROUND ALUMINUM PLATE IN TOP OF CURB, NORTH SIDE OF WINDMILL LN., AT THE CENTER LINE OF PARADISE RD. |
| 44 | 8C21 10NWW6 1998 | 659.359 | S E T RIVET AND ROUND ALUMINUM PLATE IN TOP OF CURB, NORTHEAST CORNER OF BERMUDA RD. AND ELDORADO LN. NEAR THE PC OF BERMUDA RD. | 57 | 7C21 10SES 1997 | 642.170 | S E T RIVET AND ROUND ALUMINUM PLATE IN TOP OF CURB, NORTHWEST CORNER OF WINDMILL LN. AND MARYLAND PKWY./PARADISE RD. INTERCONNECT NEAR THE PC OF WINDMILL LN. |
| 45 | 7C21 1NWW6 1997 | 618.776 | S E T RIVET AND ROUND ALUMINUM PLATE IN TOP OF CURB, ON THE EAST SIDE OF EASTERN AVE. AT THE ENTRANCE TO SUNSET PARK. | 58 | 7C21 2NNW6 1997 | 630.437 | S E T RIVET AND ROUND ALUMINUM PLATE IN TOP OF CURB, SOUTHEAST CORNER OF SUNSET RD. AND ESCONDIDO ST. NEAR THE PC OF SUNSET RD. |
| 46 | 7C21 1W4 1997 | 619.725 | S E T RIVET AND ROUND ALUMINUM PLATE IN TOP OF CURB, ON THE EAST SIDE OF EASTERN AVE., NEAR MAULE AVE. | 59 | 4C21 13W4 | 653.197 | F N D RIVET AND SQUARE ALUMINUM PLATE IN TOP OF CURB, NORTHEAST CORNER OF EASTERN AVE. AND WIGWAM AVE. NEAR THE PC OF EASTERN AVE. |
| 47 | 7C21 1SWW6 1997 | 622.638 | S E T RIVET AND ROUND ALUMINUM PLATE IN TOP OF CURB, ON THE EAST SIDE OF EASTERN AVE. 30' NORTH OF THE RAIL ROAD TRACKS. | CLARK COUNTY VERTICAL CONTROL v.2003 CLARK COUNTY SURVEYOR'S OFFICE 5051 SOUTH PARADISE ROAD LAS VEGAS, NEVADA 89119 (702) 455-0640 | | | |
| 48 | 7C21 12NWW6 1997 | 623.776 | S E T RIVET AND ROUND ALUMINUM PLATE IN TOP OF CURB, NORTHEAST CORNER OF EASTERN AVE. AND ELDORADO LN. NEAR THE PC OF EASTERN AVE. | | | | |
| | | | | CONVERSION FACTOR: METERS X $\left(\frac{3937}{1200}\right)$ = U.S. SURVEY FEET REVISED 08/01/2003 SHEET 3 OF 4 22-61 NE | | | |

| No. | STATION | ELEVATION (METERS) | DESCRIPTION | No. | STATION | ELEVATION (METERS) | DESCRIPTION |
|-----|----------------|-----------------------|---|---|---------|-----------------------|-----------------|
| 60 | 4C21 1SSE6 | 611.112 | F N D RIVET AND SQUARE ALUMINUM PLATE IN TOP OF CURB, NORTHEAST CORNER OF WARM SPRINGS RD. AND TAMIYASU LN. NEAR THE PT OF TAMIYASU LN. | | | | |
| 61 | 4C21 12N4 | 614.941 | F N D RIVET AND SQUARE ALUMINUM PLATE IN TOP OF CURB, SOUTH SIDE OF WARM SPRINGS RD. ± 0.5 MILES EAST OF EASTERN AVE. IN FRONT OF 3027 WARM SPRINGS RD. | | | | |
| 62 | 4C21 12NNW6 | 619.466 | F N D RIVET AND SQUARE ALUMINUM PLATE IN TOP OF CURB, SOUTHEAST CORNER OF WARM SPRINGS RD. AND TOPAZ ST. NEAR THE PT OF WARM SPRINGS RD. | | | | |
| | | | | | | | |
| | | | | | | | |
| | | | | | | | |
| | | | | | | | |
| | | | | | | | |
| | | | | | | | |
| | | | | | | | |
| | | | | | | | |
| | | | | | | | |
| | | | | | | | |
| | | | | CLARK COUNTY VERTICAL CONTROL v.2003 | | | |
| | | | | CLARK COUNTY SURVEYOR'S OFFICE 5051 SOUTH PARADISE ROAD LAS VEGAS, NEVADA 89119 (702) 455-0640 | | | |
| | | | | CONVERSION FACTOR: METERS X $\left(\frac{3937}{1200}\right)$ = U.S. SURVEY FEET | | REVISED 08/01/2003 | SHEET 4 OF 4 |
| | | | | | | 22-61 NE | |