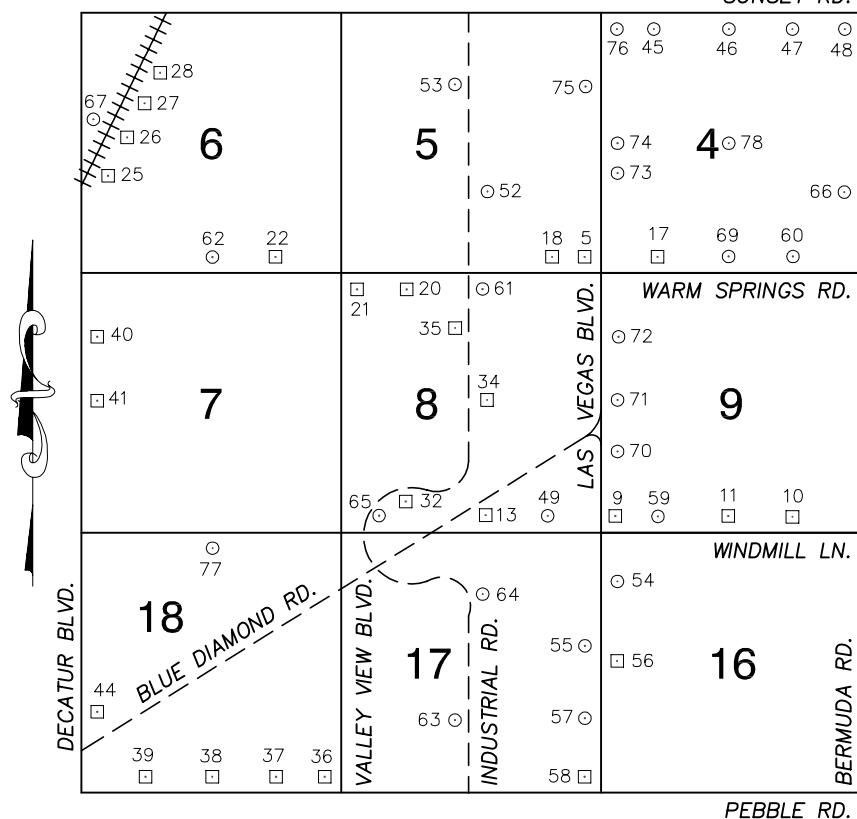


Township 22 South, Range 61 East Northwest Quarter

SUNSET RD.



NORTH AMERICAN VERTICAL
DATUM OF 1988
- ALL ELEVATIONS IN METERS -

No.	STATION	ELEVATION (METERS)	DESCRIPTION
1			LOST 2003
2			LOST 2003
3			LOST 2003
4			LOST 2003
5	8C21 5SES	681.375	FND RIVET AND SQUARE ALUMINUM PLATE IN TOP OF CURB, NORTHWEST CORNER OF LAS VEGAS BLVD. AND WARM SPRINGS RD. 150' WEST OF INTERSECTION. (NEAR MAILBOX)
6			LOST 2003
7			LOST 2003
8			LOST 2003
9	0C21 9SWS	683.685	FND RIVET AND SQUARE ALUMINUM PLATE IN TOP OF CURB OF PLANTER, NEAR 1/2 DELTA. NORTHEAST CORNER OF LAS VEGAS BLVD. AND WINDMILL LN.
10	0C21 9SSE6	669.441	FND RIVET AND SQUARE ALUMINUM PLATE IN AN ELECTRICAL TRANSFORMER BOX PAD, NORTH SIDE WINDMILL LN. 150' WEST OF PLACID ST.
11	0C21 9S4	675.217	FND RIVET AND SQUARE ALUMINUM PLATE IN AN ELECTRICAL TRANSFORMER PAD, NORTH SIDE OF WINDMILL LN. NEAR THE EAST PROPERTY LINE OF 170 WINDMILL LN.
CLARK COUNTY VERTICAL CONTROL v.2003			
CLARK COUNTY SURVEYOR'S OFFICE 5051 SOUTH PARADISE ROAD LAS VEGAS, NEVADA 89119 (702) 455-0640			CONVERSION FACTOR: METERS X $\left(\frac{3937}{1200}\right)$ = U.S. SURVEY FEET
REVISED 09/01/2006			SHEET 1 OF 4
			22-61 NW

No.	STATION	ELEVATION (METERS)		DESCRIPTION	No.	STATION	ELEVATION (METERS)		DESCRIPTION
12				LOST 2003	25	0C21 6SWW6	714.929	F N D	INVERTED ALUMINUM MONUMENT AT DECATUR BLVD. AND ARBY AVE. EAST SIDE OF RAILROAD TRACKS AT BASE OF GRADE.
13	0C21 8S4	690.325	F N D	RIVET AND SQUARE ALUMINUM PLATE IN AN ELECTRICAL METER BASE, EAST OF I-15 R/W FENCE, NORTH OF WINDMILL LN. 35' NORTH OF RV PARK BLOCK WALL.	26	0C21 6W4	712.667	F N D	5/8" REBAR IN LOWER PORTION OF THE NORTHEAST WING WALL OF BOX CULVERT UNDER RAILROAD TRACKS, NEAR THE PROJECTION OF BADURA AVE. REBAR PROJECTS ABOUT 3" ABOVE CONCRETE.
14				LOST 2003	27	0C21 6W6	708.413	F N D	5/8" REBAR IN LOWER PORTION OF THE NORTHEAST WING WALL OF BOX CULVERT UNDER RAILROAD TRACKS NEAR THE PROJECTION OF PAMALYN AVE. REBAR PROJECTS ABOUT 3" ABOVE CONCRETE.
15				LOST 2003	28	0C21 6NW6	709.262	F N D	RIVET AND SQUARE ALUMINUM PLATE IN CONCRETE BASE OF RAILROAD SIGNAL POLE, EAST SIDE OF TRACKS, SOUTH OF PROJECTION OF MARTIN AVE.
16				LOST 2003	29				LOST 2003
17	0C21 4SSW6	675.884	F N D	RIVET AND SQUARE ALUMINUM PLATE IN TOP OF CURB, NORTHWEST CORNER OF WARM SPRINGS RD. AND HAVEN ST. NEAR THE PC OF WARM SPRINGS RD.	30				LOST 2003
18	8C21 5SSE6	684.158	F N D	RIVET AND SQUARE ALUMINUM PLATE IN CONCRETE BASE OF FIRE HYDRANT, NORTH SIDE OF WARM SPRINGS RD. 900' WEST OF LAS VEGAS BLVD. NEAR 2540 WARM SPRINGS RD.	31				LOST 2003
19				LOST 2003	32	0C21 8SSW6	697.770	F N D	RIVET AND SQUARE ALUMINUM PLATE IN TOP OF CURB, ON THE SOUTH SIDE OF INDUSTRIAL RD. IN FRONT OF A FIRE HYDRANT, 900' NORTH OF BLUE DIAMOND RD.
20	8C21 8NNW6	695.968	F N D	RIVET AND SQUARE ALUMINUM PLATE IN TOP OF CURB, SOUTHEAST CORNER OF WARM SPRINGS RD. AND POLARIS AVE.	33				LOST 2003
21	8C21 8NWS	700.572	F N D	RIVET AND SQUARE ALUMINUM PLATE IN TOP OF CURB, SOUTHEAST CORNER OF WARM SPRINGS RD. AND VALLEY VIEW BLVD. NEAR THE PC OF WARM SPRINGS RD.	34	0C21 8C4	694.445	F N D	NDOT CAP IN A CONCRETE MONUMENT, SOUTHEAST CORNER OF INDUSTRIAL RD. AND ROBINDALE RD. STAMPED "A 338+12.16".
22	8C21 6SSE6	705.965	F N D	INVERTED ALUMINUM MONUMENT SET IN CONCRETE, ON THE NORTH SIDE OF WARM SPRINGS RD. 350' WEST OF HINSON ST. AT 4212 WARM SPRINGS RD.	35	0C21 8N6	694.212	F N D	RIVET AND SQUARE ALUMINUM PLATE IN TOP OF CURB, WEST SIDE OF INDUSTRIAL RD. 700' SOUTH OF WARM SPRINGS RD.
23				LOST 2003	CLARK COUNTY VERTICAL CONTROL v.2003 CLARK COUNTY SURVEYOR'S OFFICE 5051 SOUTH PARADISE ROAD LAS VEGAS, NEVADA 89119 (702) 455-0640				
24				LOST 2003					
					CONVERSION FACTOR: METERS X $\left(\frac{3937}{1200}\right)$ = U.S. SURVEY FEET REVISED 2003 SHEET 2 OF 4 22-61 NW				

No.	STATION	ELEVATION (METERS)	DESCRIPTION	No.	STATION	ELEVATION (METERS)	DESCRIPTION
36	2C21 18SES	703.273	F N D RIVET AND SQUARE ALUMINUM PLATE IN AN ELECTRICAL TRANSFORMER PAD, WEST SIDE OF VALLEY VIEW BLVD. 400' NORTH OF PEBBLE RD.	49	7C21 8SSE6 1997	687.808	S E T RIVET AND ROUND ALUMINUM PLATE IN TOP OF CURB, AT WINDMILL LN. AND THE PROJECTION OF WINDY RD.
37	2C21 18SSE6	707.958	F N D RIVET AND SQUARE ALUMINUM PLATE IN AN ELECTRICAL TRANSFORMER PAD, NORTH SIDE OF PEBBLE RD. 100' EAST OF HINSON ST.	50			LOST 2003
38	2C21 18S4	714.534	F N D RIVET AND SQUARE ALUMINUM PLATE IN AN ELECTRICAL TRANSFORMER PAD, NORTH SIDE OF PEBBLE RD. 60' WEST OF ARVILLE ST.	51			LOST 2003
39	2C21 18SSW6	720.916	F N D RIVET AND SQUARE ALUMINUM PLATE IN CONCRETE MONUMENT, NORTHEAST CORNER OF CAMERON ST. AND PEBBLE RD.	52	7C21 5S6 1997	690.794	S E T RIVET AND ROUND ALUMINUM PLATE IN TOP OF CURB, NORTHEAST QUADRANT OF INDUSTRIAL RD. AND ARBY AVE. 30' NORTH OF ARBY AVE. ALIGNMENT.
40	2C21 7NWW6	721.664	F N D RIVET AND SQUARE ALUMINUM PLATE IN CONCRETE MONUMENT, NORTHEAST CORNER OF DECATUR BLVD. AND ELDORADO LN. BY MAILBOX #4880 WEST ELDORADO LN.	53	7C21 5N6 1997	686.478	S E T RIVET AND ROUND ALUMINUM PLATE IN TOP OF CURB, NORTHWEST QUADRANT OF INDUSTRIAL RD. AND MARTIN AVE. NEAR THE PC OF INDUSTRIAL RD.
41	2C21 7W4	723.036	F N D RIVET AND SQUARE ALUMINUM PLATE IN AN ELECTRICAL TRANSFORMER PAD, SOUTHEAST CORNER OF DECATUR BLVD. AND ROBINDALE ROAD.	54	7C21 16NWW6 1997	683.495	S E T RIVET AND ROUND ALUMINUM PLATE IN TOP OF CURB, SOUTHEAST CORNER OF LAS VEGAS BLVD. AND SHELBORNE AVE. NEAR THE PC OF LAS VEGAS BLVD.
42			LOST 2003	55	7C21 17E4 1997	682.674	S E T RIVET AND ROUND ALUMINUM PLATE IN TOP OF CURB, NORTHWEST CORNER OF LAS VEGAS BLVD. AND WIGWAM AVE. NEAR THE PC OF LAS VEGAS BLVD.
43			LOST 2003	56	4C21 16W4	682.522	F N D RIVET AND SQUARE ALUMINUM PLATE IN A CONCRETE FIRE HYDRANT PAD. AT 8560 LAS VEGAS BLVD. SOUTH. ON THE EAST SIDE OF LAS VEGAS BLVD.
44	2C21 18SWW6	726.005	F N D RIVET AND SQUARE ALUMINUM PLATE IN CONCRETE MONUMENT, NORTHEAST CORNER OF DECATUR BLVD. AND FORD AVE. 300' SOUTH OF BLUE DIAMOND ROAD.	57	7C21 17SEE6 1997	683.272	S E T RIVET AND ROUND ALUMINUM PLATE IN TOP OF CURB, SOUTHWEST CORNER OF LAS VEGAS BLVD. AND FORD AVE. NEAR THE PC OF LAS VEGAS BLVD.
45	7C21 4NNW6 1997	667.647	S E T RIVET AND ROUND ALUMINUM PLATE IN TOP OF CURB, SOUTH SIDE OF SUNSET RD. 1000' EAST OF LAS VEGAS BLVD.	58	4C21 17SES	682.702	F N D RIVET AND SQUARE ALUMINUM PLATE IN TOP OF CURB, NORTHWEST CORNER OF LAS VEGAS BLVD. AND PEBBLE RD. NEAR THE PC OF PEBBLE RD.
46	7C21 4N4 1997	662.761	S E T RIVET AND ROUND ALUMINUM PLATE IN TOP OF CURB, SOUTHWEST CORNER OF SUNSET RD. AND GILESPIE ST. NEAR THE PC OF SUNSET RD.	59	7C21 9SSW6 1997	679.015	S E T RIVET AND ROUND ALUMINUM PLATE IN A CONCRETE MONUMENT, NORTHWEST QUADRANT OF WINDMILL LN. AND HAVEN ST.
47	7C21 4NNE6 1997	656.494	S E T RIVET AND ROUND ALUMINUM PLATE IN TOP OF CURB, SOUTHWEST CORNER OF SUNSET RD. AND RAILROAD CROSSING LEADING INTO McCARRAN AIRPORT.	CLARK COUNTY VERTICAL CONTROL v.2003 CLARK COUNTY SURVEYOR'S OFFICE 5051 SOUTH PARADISE ROAD LAS VEGAS, NEVADA 89119 (702) 455-0640			
48	7C21 4NES 1997	651.312	S E T RIVET AND ROUND ALUMINUM PLATE IN TOP OF CURB, SOUTHWEST CORNER OF SUNSET RD. AND BERMUDA RD. NEAR THE PC OF SUNSET RD.				
				CONVERSION FACTOR: METERS X $\left(\frac{3937}{1200}\right)$ = U.S. SURVEY FEET REVISED 2003 SHEET 3 OF 4 22-61 NW			

No.	STATION	ELEVATION (METERS)	DESCRIPTION	No.	STATION	ELEVATION (METERS)	DESCRIPTION
60	7C21 4SSE6 1997	663.773	S E T RIVET AND ROUND ALUMINUM PLATE IN TOP OF CURB, NORTHEAST CORNER OF WARM SPRINGS RD. AND PLACID ST. NEAR THE PC OF WARM SPRINGS RD.	73	0C21 4SWW6 2000	678.805	S E T RIVET AND ROUND ALUMINUM PLATE IN TOP OF CURB, SOUTHEAST CORNER OF LAS VEGAS BLVD. AND THE ON RAMP TO I-215 EAST BOUND. NEAR THE PC OF LAS VEGAS BLVD.
61	7C21 8N4 1997	692.747	S E T RIVET AND ROUND ALUMINUM PLATE IN TOP OF CURB, SOUTHEAST CORNER OF WARM SPRINGS RD. AND INDUSTRIAL RD. NEAR THE PC OF INDUSTRIAL RD.	74	0C21 4W4 2000	677.578	S E T RIVET AND ROUND ALUMINUM PLATE IN TOP OF CURB, NORTHEAST CORNER OF LAS VEGAS BLVD. AND I-215 WEST BOUND OFF RAMP NEAR THE PC OF LAS VEGAS BLVD.
62	7C21 6S4 1997	709.422	S E T RIVET AND ROUND ALUMINUM PLATE IN TOP OF CURB, NORTHEAST CORNER OF WARM SPRINGS RD. AND ARVILLE ST. NEAR THE PC OF WARM SPRINGS RD.	75	4C21 5NEE6	675.648	F N D 2" BRASS CAP IN TOP OF CURB, SOUTHWEST CORNER OF LAS VEGAS BLVD. AND THE NORTH ENTRANCE TO VACATION VILLAGE, NEAR THE PC OF LAS VEGAS BLVD.
63	7C21 17S6 1997	695.307	S E T RIVET AND ROUND ALUMINUM PLATE IN AN ELECTRICAL TRANSFORMER PAD. (# R392) WEST SIDE OF INDUSTRIAL RD. 175' SOUTH OF FORD AVE.	76	4C21 4NWS	672.297	F N D 2" DOME BRASS CAP ON TOP OF CURB, SOUTHEAST CORNER OF SUNSET RD. AND LAS VEGAS BLVD. NEAR THE PC OF SUNSET RD.
64	7C21 17N6 1997	693.815	S E T RIVET AND ROUND ALUMINUM PLATE IN TOP OF CURB, EAST SIDE OF INDUSTRIAL RD. 18' NORTH OF THE PC ON INDUSTRIAL RD. AT THE SOUTH END OF SILVERTON RV PARK.	77	0C21 18N4 2000	711.894	S E T RIVET AND ROUND ALUMINUM PLATE IN 8' X 8' CONCRETE PAD FOR WATER MANHOLE, ±50' EAST OF ARVILLE ST. AND ±150' SOUTH OF WINDMILL LN.
65	7C21 8SSW6 1997	698.334	S E T RIVET AND ROUND ALUMINUM PLATE IN TOP OF CURB, NORTHEAST CORNER OF BLUE DIAMOND RD. AND INDUSTRIAL RD. 25' NORTH OF THE PC OF INDUSTRIAL RD.	78	4C21 4C4	667.889	RIVET AND SQUARE ALUMINUM PLATE IN TOP OF CURB, SOUTHEAST CORNER OF GILESPIE ST. AND HIDDEN WELL RD. NEAR THE PC OF GILESPIE ST.
66	8C21 4SEE6 1998	657.635	S E T RIVET AND ROUND ALUMINUM PLATE IN TOP OF CURB, SOUTHWEST CORNER OF BERMUDA RD. AND ARBY AVE. NEAR THE PC OF BERMUDA RD.	79			
67	7C21 6W4 1997	714.128	S E T RIVET AND ROUND ALUMINUM PLATE IN A CONCRETE MONUMENT, NORTHEAST QUADRANT OF DECATUR BLVD. AND MAULE AVE.	80			
68			LOST 2003	81			
69	0C21 4S4 2000	670.606	S E T RIVET AND ROUND ALUMINUM PLATE IN TOP OF CURB, NORTHEAST CORNER OF WARM SPRINGS RD. AND GILESPIE ST. NEAR THE PC OF WARM SPRINGS RD.	82			
70	0C21 9SWW6 2000	683.200	S E T RIVET AND ROUND ALUMINUM PLATE IN TOP OF CURB, NORTHEAST CORNER OF LAS VEGAS BLVD. AND MESA VERDE LN. NEAR THE PC OF LAS VEGAS BLVD.	83			
71	0C21 9W4 2000	681.328	S E T RIVET AND ROUND ALUMINUM PLATE IN TOP OF CURB, NORTHEAST CORNER OF LAS VEGAS BLVD. AND ROBINDALE LN. NEAR THE PC OF LAS VEGAS BLVD.	CLARK COUNTY VERTICAL CONTROL v.2003 CLARK COUNTY SURVEYOR'S OFFICE 5051 SOUTH PARADISE ROAD LAS VEGAS, NEVADA 89119 (702) 455-0640			
72	0C21 9NWW6 2000	681.765	S E T RIVET AND ROUND ALUMINUM PLATE IN TOP OF CURB, NORTHEAST CORNER OF LAS VEGAS BLVD. AND ELDORADO ST. NEAR THE PC OF LAS VEGAS BLVD. AT THE ENTRANCE TO BELZ OUTLET.				
				CONVERSION FACTOR: METERS X $\left(\frac{3937}{1200}\right)$ = U.S. SURVEY FEET <div> REVISED 09/01/2006 </div> <div> SHEET 4 OF 4 </div> <div> 22-61 NW </div>			