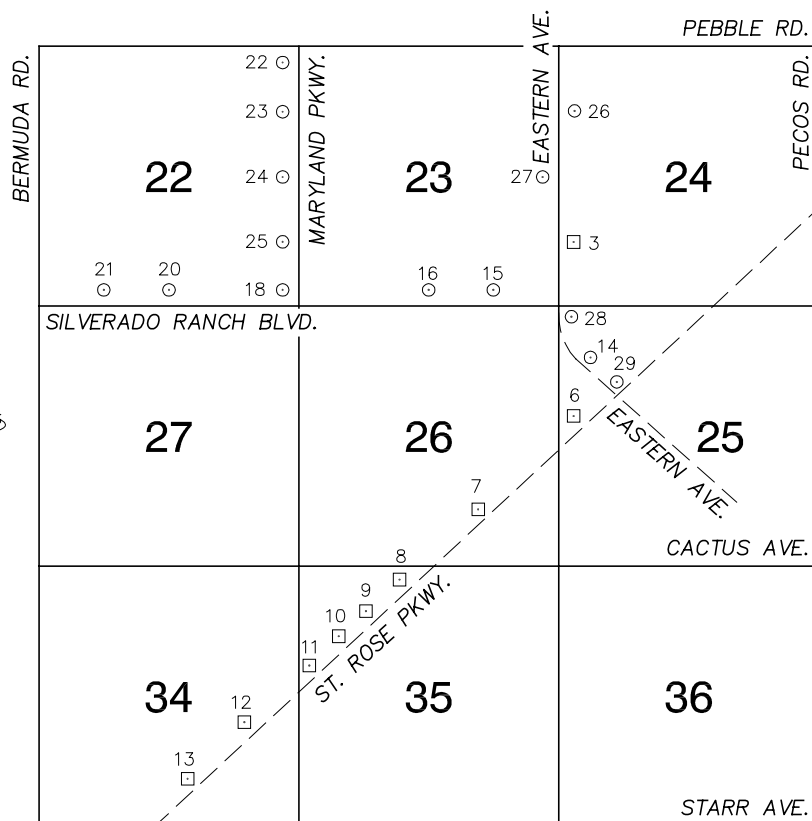


Township 22 South, Range 61 East Southeast Quarter



NORTH AMERICAN VERTICAL
DATUM OF 1988
- ALL ELEVATIONS IN METERS -

No.	STATION	ELEVATION (METERS)	DESCRIPTION
1			LOST 2003
2			LOST 2003
3	8C21 24SWW6	667.055	F N D RIVET AND SQUARE ALUMINUM PLATE, IN A CONCRETE PAD WITH WELL CASING. 100' EAST OF EASTERN AVE, NEAR THE ALIGNMENT OF RICHMAR AVE.
4			LOST 2003
5			LOST 2003
6	0C21 25W6	690.700	F N D NDOT CAP IN A CONCRETE MONUMENT, 20' NORTH OF ST. ROSE PKWY. E.O. AND 0.25 MILES WEST OF EASTERN AVE. STAMPED "H 217+83.79 POT DATE 12/21/56"
7	0C21 26E6	689.985	F N D RIVET AND SQUARE ALUMINUM PLATE, IN THE TOP OF HEADWALL ON THE NORTH SIDE OF ST. ROSE PKWY. 0.15 MILES EAST OF MILE MARKER 4.
8	0C21 35N4	700.525	F N D RIVET AND SQUARE ALUMINUM PLATE IN THE WEST TOP OF HEAD WALL ON THE NORTH SIDE OF ST. ROSE PKWY. 300' WEST OF SEVEN HILLS DR.
9	0C21 35N6	705.846	F N D NDOT CAP IN A CONCRETE MONUMENT, NORTH SIDE OF ST. ROSE PKWY. NEAR MILE MARKER 3.40. STAMPED "169+87.05 POT 12/20/51"
10	0C21 35NW6	711.105	F N D RIVET AND SQUARE ALUMINUM PLATE IN THE WEST TOP OF HEADWALL ON THE NORTH SIDE OF ST. ROSE PKWY. NEAR MILE MARKER 3.15.
11	0C21 35W4	713.857	F N D RIVET AND SQUARE ALUMINUM PLATE IN THE WEST TOP OF HEADWALL IN THE NORTHEAST CORNER OF ST. ROSE PKWY. AND THE PROJECTED MARYLAND PKWY. ALIGNMENT.

CLARK COUNTY VERTICAL CONTROL v.2003

CLARK COUNTY SURVEYOR'S OFFICE
5051 SOUTH PARADISE ROAD
LAS VEGAS, NEVADA 89119
(702) 455-0640

CONVERSION FACTOR:

METERS X $\left(\frac{3937}{1200}\right)$ = U.S. SURVEY FEET

REVISED 2003

SHEET
1 OF 2

22-61
SE

No.	STATION	ELEVATION (METERS)	DESCRIPTION		No.	STATION	ELEVATION (METERS)	DESCRIPTION			
12	0C21 34SE6	714.055	F N D	RIVET AND SQUARE ALUMINUM PLATE IN TOP OF HEADWALL, ON THE NORTH SIDE OF ST. ROSE PKWY. NEAR MILE MARKER 2.55.	25	8C21 22SEE6 1998	671.185	S E T	RIVET AND ROUND ALUMINUM PLATE IN TOP OF CURB, NORTHWEST CORNER OF MARYLAND PKWY. AND RICHMAR AVE. NEAR THE PC OF MARYLAND PKWY.		
13	0C21 34SSE6	716.274	F N D	RIVET AND SQUARE ALUMINUM PLATE IN THE WEST TOP OF HEADWALL, ON THE NORTH SIDE OF ST. ROSE PKWY. NEAR MILE MARKER 2.35.	26	7C21 24NWW6 1997	654.166	S E T	RIVET AND ROUND ALUMINUM PLATE IN TOP OF CURB, EAST SIDE OF EASTERN AVE. UNDER THE EASTBOUND OVERPASS OF I-215		
14	7C21 25NWW6 1997	682.258	S E T	RIVET AND ROUND ALUMINUM PLATE IN A CONCRETE ELEC. VAULT, 150' SOUTH OF IONE RD. AND EASTERN AVE. EAST SIDE OF EASTERN AVE.	27	7C21 23E4 1997	660.315	S E T	RIVET AND ROUND ALUMINUM PLATE ON CONCRETE WING WALL ON SOUTH SIDE OF SERENE AVE. 70' WEST OF EASTERN AVE.		
15	8C21 23SSE6 1998	672.604	S E T	RIVET AND ROUND ALUMINUM PLATE IN TOP OF CURB, NORTH SIDE OF SILVERADO RANCH BLVD. 425' EAST OF SILVERADO CROSSINGS EASTERLY ENTRANCE.	28	7C21 25NWS 1997	672.011	S E T	RIVET AND ROUND ALUMINUM PLATE IN TOP OF CURB, SOUTHEAST CORNER OF EASTERN AVE. AND IVANPAH DR./SILVERADO RANCH BLVD. NEAR THE PC OF EASTERN AVE.		
16	8C21 23S4 1998	673.390	S E T	RIVET AND ROUND ALUMINUM PLATE IN TOP OF CURB, NORTHEAST CORNER OF SILVERADO RANCH BLVD. AND SPENCER ST. NEAR THE PC OF SILVERADO RANCH BLVD.	29	7C21 25NW6 1997	689.612	S E T	RIVET AND ROUND ALUMINUM PLATE IN TOP OF CURB, NORTHEAST CORNER OF EASTERN AVE. AND ST. ROSE PKWY. NEAR THE PC OF EASTERN AVE.		
17				LOST 2003	30						
18	8C21 22SES 1998	675.967	S E T	RIVET AND ROUND ALUMINUM PLATE IN TRANSFORMER PAD, NORTHWEST CORNER OF SILVERADO RANCH BLVD. AND MARYLAND PKWY. 150' WEST OF MARYLAND PKWY.	31						
19				LOST 2003	32						
20	8C21 22S4 1998	678.721	S E T	RIVET AND ROUND ALUMINUM PLATE IN TOP OF CURB, NORTHEAST CORNER OF GOMER RD. AND POLLOCK DR. NEAR THE PC OF GOMER RD.	33						
21	8C21 22SSW6 1998	679.211	S E T	RIVET AND ROUND ALUMINUM PLATE IN TOP OF CURB, NORTH SIDE OF SILVERADO RANCH BLVD. NEAR THE PROPERT LINE OF SILVER CANYON HOMES.	34						
22	8C21 22NES 1998	664.392	S E T	RIVET AND ROUND ALUMINUM PLATE IN TOP OF CURB, SOUTHWEST CORNER OF MARYLAND PKWY. AND PEBBLE RD. NEAR THE PC OF MARYLAND PKWY.	35						
23	8C21 22NEE6 1998	665.719	S E T	RIVET AND ROUND ALUMINUM PLATE IN TOP OF CURB, WEST SIDE OF MARYLAND PKWY. 0.25 MILES SOUTH OF PEBBLE RD.	CLARK COUNTY VERTICAL CONTROL v.2003 CLARK COUNTY SURVEYOR'S OFFICE 5051 SOUTH PARADISE ROAD LAS VEGAS, NEVADA 89119 (702) 455-0640						
24	8C21 22E4 1998	668.219	S E T	RIVET AND ROUND ALUMINUM PLATE IN TOP OF CURB, SOUTHWEST CORNER OF MARYLAND PKWY. AND SERENE AVE. NEAR THE PC OF MARYLAND PKWY.							
					CONVERSION FACTOR: METERS X $\left(\frac{3937}{1200}\right)$ = U.S. SURVEY FEET						
					REVISED 2003		SHEET 2 OF 2		22-61 SE		