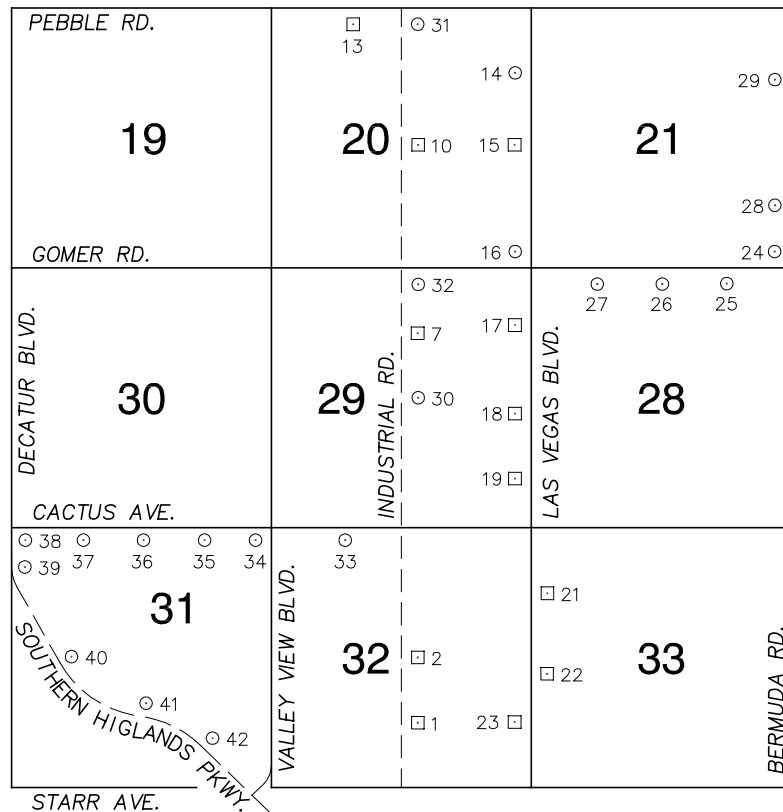


Township 22 South, Range 61 East Southwest Quarter



NORTH AMERICAN VERTICAL
DATUM OF 1988
— ALL ELEVATIONS IN METERS —

No.	STATION	ELEVATION (METERS)	DESCRIPTION
1	0C21 32S6	712.076	F N D INVERTED ALUMINUM MONUMENT ON THE EAST SIDE OF INDUSTRIAL RD. 0.25 MILES NORTH OF STARR AVE.
2	0C21 32C4	706.030	F N D NDOT CAP IN A CONCRETE MONUMENT, NORTHEAST CORNER OF INDUSTRIAL RD. AND ERIE AVE. STAMPED "STA A 106+75.91 DIST 35.00 ANGLE 90"
3			LOST 2003
4			LOST 2003
5			LOST 2003
6			LOST 2003
7	0C21 29N6	698.206	F N D INVERTED ALUMINUM MONUMENT CENTERED BETWEEN A PAIR OF POWER POLES# ? SOUTHEAST QUADRANT OF INDUSTRIAL RD. AND LE BARON AVE.
8			LOST 2003
9			LOST 2003
10	0C21 20C4	696.163	F N D RIVET AND SQUARE ALUMINUM PLATE IN THE WEST CENTER OF A 4'X3' CONCRETE PAD IN THE NORTHEAST CORNER OF INDUSTRIAL RD. AND SERENE AVE.
11			LOST 2003

CLARK COUNTY VERTICAL CONTROL v.2003

CLARK COUNTY SURVEYOR'S OFFICE
5051 SOUTH PARADISE ROAD
LAS VEGAS, NEVADA 89119
(702) 455-0640

CONVERSION FACTOR:

METERS X $\left(\frac{3937}{1200}\right)$ = U.S. SURVEY FEET

REVISED
08/01/2003

SHEET
1 OF 3

22-61
SW

No.	STATION	ELEVATION (METERS)	DESCRIPTION	No.	STATION	ELEVATION (METERS)	DESCRIPTION
12			LOST 2003	25	8C21 28NNE6 1998	678.321	RIVET AND ROUND ALUMINUM PLATE IN AN ELECTRICAL TRANSFORMER PAD, 85' EAST OF WELLINGTON ESTATES MAIN ENTRANCE, ON THE SOUTH SIDE OF SILVERADO RANCH BLVD.
13	2C21 20NNW6	699.177	F N D RIVET AND SQUARE ALUMINUM PLATE IN AN ELECTRICAL TRANSFORMER PAD, SOUTH SIDE OF PEBBLE RD. 150' EAST OF PROCYON AVE.	26	8C21 28N4 1998	677.973	S E T RIVET AND ROUND ALUMINUM PLATE IN AN ELECTRICAL TRANSFORMER PAD, SOUTHEAST CORNER OF SILVERADO RANCH BLVD. AND GILESPIE ST.
14	7C21 20NEE6 1997	684.116	S E T RIVET AND ROUND ALUMINUM PLATE IN TOP OF CURB, SOUTHWEST CORNER OF LAS VEGAS BLVD. AND AGATE AVE. NEAR THE PC OF LAS VEGAS BLVD.	27	8C21 28NNW6 1998	680.749	S E T RIVET AND ROUND ALUMINUM PLATE IN A CONCRETE TELEPHONE MANHOLE PAD, 45' SOUTH OF SILVERADO RANCH BLVD. AND 125' EAST OF HAVEN ST.
15	4C21 20E4	685.233	F N D RIVET AND SQUARE ALUMINUM PLATE IN TOP OF CURB, NORTHWEST CORNER OF LAS VEGAS BLVD. AND SERENE AVE. NEAR THE PC OF LAS VEGAS BLVD.	28	8C21 21SEE6 1998	676.893	S E T RIVET AND ROUND ALUMINUM PLATE IN A CONCRETE MONUMENT, SOUTHWEST QUADRANT OF BERMUDA RD. AND RICHMAR AVE.
16	7C21 20SES 1997	685.990	S E T RIVET AND ROUND ALUMINUM PLATE IN TOP OF CURB, NORTHWEST CORNER OF LAS VEGAS BLVD. AND SILVERADO RANCH BLVD. NEAR THE PC OF LAS VEGAS BLVD.	29	8C21 21NEE6 1998	668.151	S E T RIVET AND ROUND ALUMINUM PLATE IN AN ELECTRICAL MANHOLE VAULT, SOUTHWEST QUADRANT OF BERMUDA RD. AND AGATE AVE.
17	4C21 29NEE6	686.071	F N D RIVET AND SQUARE ALUMINUM PLATE IN A CONCRETE MONUMENT, 500' NORTH OF LE BARON AVE. AND 25' WEST OF E.O. OF LAS VEGAS BLVD.	30	8C21 29C4 1998	697.995	S E T RIVET AND ROUND ALUMINUM PLATE IN A CONCRETE MONUMENT, NORTHEAST CORNER OF INDUSTRIAL RD. AND PYLE AVE.
18	4C21 29E4	688.421	F N D RIVET AND SQUARE ALUMINUM PLATE IN A CONCRETE HEADWALL ON THE WEST SIDE OF LAS VEGAS BLVD. 320' SOUTH OF PYLE AVE.	31	7C21 20N4 1997	694.643	S E T RIVET AND ROUND ALUMINUM PLATE IN AN ELECTRICAL TRANSFORMER PAD, # (RR55) ON THE EAST SIDE OF INDUSTRIAL RD. 175' SOUTH OF PEBBLE RD.
19	4C21 29SEE6	692.805	F N D RIVET AND SQUARE ALUMINUM PLATE IN A CONCRETE HEADWALL ON THE WEST SIDE OF LAS VEGAS BLVD. 400' SOUTH OF FRIAS AVE.	32	7C21 29N4 1997	697.572	S E T RIVET AND ROUND ALUMINUM PLATE IN A CONCRETE MONUMENT, EAST SIDE OF INDUSTRIAL RD. ± 180' SOUTH OF GOMER RD. NEAR CORNER OF BLOCKWALL.
20			LOST 2003	33	3C21 32NNW6 2003	701.093	S E T RIVET AND ROUND ALUMINUM PLATE IN 3X3 LAS VEGAS VALLEY WATER DISTRICT CONCRETE PAD. SOUTH SIDE OF CACTUS AV. ± 480 FEET WEST OF INDUSTRIAL RD.
21	4C21 33NWW6	702.035	F N D RIVET AND SQUARE ALUMINUM PLATE IN A CONCRETE HEADWALL ON THE WEST SIDE OF LAS VEGAS BLVD. 35' EAST OF THE NORTH 1/16 OF S32 I S33	34	3C21 31NES 2003	707.914	S E T RIVET AND ROUND ALUMINUM PLATE IN TOP OF CURB, SOUTH SIDE OF CACTUS AVE. ± 350 FEET WEST OF VALLEY VIEW BLVD.
22	4C21 33W4	708.279	F N D RIVET AND SQUARE ALUMINUM PLATE IN A CONCRETE AT&T MANHOLE PAD, 50' EAST OF E.O. OF LAS VEGAS BLVD. 210' SOUTH OF ERIE AVE.	35	3C21 31NNE6 2003	711.779	S E T RIVET AND ROUND ALUMINUM PLATE IN TOP OF CURB, SOUTH SIDE OF CACTUS AVE. OPPOSITE THE HINSON ST. ALIGNMENT.
23	4C21 32SEE6	716.396	F N D RIVET AND SQUARE ALUMINUM PLATE IN A CONCRETE HEADWALL ON THE WEST SIDE OF LAS VEGAS BLVD. 340' SOUTH OF MILE MARKER 30.	CLARK COUNTY VERTICAL CONTROL v.2003 CLARK COUNTY SURVEYOR'S OFFICE 5051 SOUTH PARADISE ROAD LAS VEGAS, NEVADA 89119 (702) 455-0640			
24	8C21 21SES 1998	679.549	S E T RIVET AND ROUND ALUMINUM PLATE IN AN ELECTRICAL TRANSFORMER PAD. NORTHWEST CORNER OF BERMUDA RD. AND SILVERADO RANCH BLVD. 275' WEST OF BERMUDA RD.				
				CONVERSION FACTOR: METERS X $\left(\frac{3937}{1200}\right)$ = U.S. SURVEY FEET REVISED 08/01/2003			
				SHEET 2 OF 3 22-61 SW			

No.	STATION	ELEVATION (METERS)	DESCRIPTION	No.	STATION	ELEVATION (METERS)	DESCRIPTION
36	3C21 31N4 2003	718.139	SE T RIVET AND ROUND ALUMINUM PLATE IN TOP OF CURB, SOUTH SIDE OF CACTUS AVE. OPPOSITE THE ARVILLE ST. ALIGNMENT.				
37	3C21 31NNW6 2003	724.227	SE T RIVET AND ROUND ALUMINUM PLATE IN TOP OF CURB, SOUTH SIDE OF CACTUS AVE. ±1320 FEET EAST OF DECATUR BLVD./SOUTHERN HIGHLANDS SWITCHOVER.				
38	3C21 31NWS 2003	728.914	SE T RIVET AND ROUND ALUMINUM PLATE IN TOP OF CURB, SOUTHEAST CORNER OF CACTUS AVE. AND DECATUR BLVD./SOUTHERN HIGHLANDS PKWY. SWITCHOVER, NEAR THE PC OF SOUTHERN HIGHLANDS PKWY.				
39	3C21 31NWW6 2003	731.699	SE T RIVET AND ROUND ALUMINUM PLATE IN TOP OF CURB, SOUTHEAST CORNER OF SOMERSET HILLS AVE. AND SOUTHERN HIGHLANDS PKWY. NEAR THE PC OF SOUTHERN HIGHLANDS PKWY.				
40	3C21 31W6 2003	727.441	SE T RIVET AND ROUND ALUMINUM PLATE IN TOP OF CURB, EAST SIDE OF SOUTHERN HIGHLANDS PKWY. ±0.1 MILES NORTH OF STARR HILLS AVE.				
41	3C21 31S6 2003	719.915	SE T RIVET AND ROUND ALUMINUM PLATE IN TOP OF CURB, EAST SIDE OF SOUTHERN HIGHLANDS PKWY. ±0.5 MILES NORTH OF THE INTERSECTION OF VALLEY VIEW BLVD. AND SOUTHERN HIGHLANDS PKWY.				
42	3C21 31SE6 2003	716.197	SE T RIVET AND ROUND ALUMINUM PLATE IN TOP OF CURB, EAST SIDE OF SOUTHERN HIGHLANDS PKWY. ±0.2 MILES NORTH OF THE INTERSECTION OF VALLEY VIEW BLVD. AND SOUTHERN HIGHLANDS PKWY.				
				CLARK COUNTY VERTICAL CONTROL v.2003			
				CLARK COUNTY SURVEYOR'S OFFICE 5051 SOUTH PARADISE ROAD LAS VEGAS, NEVADA 89119 (702) 455-0640			
				CONVERSION FACTOR: METERS X $\left(\frac{3937}{1200}\right)$ = U.S. SURVEY FEET			
				REVISED 08/01/2003		SHEET 3 OF 3	22-61 SW