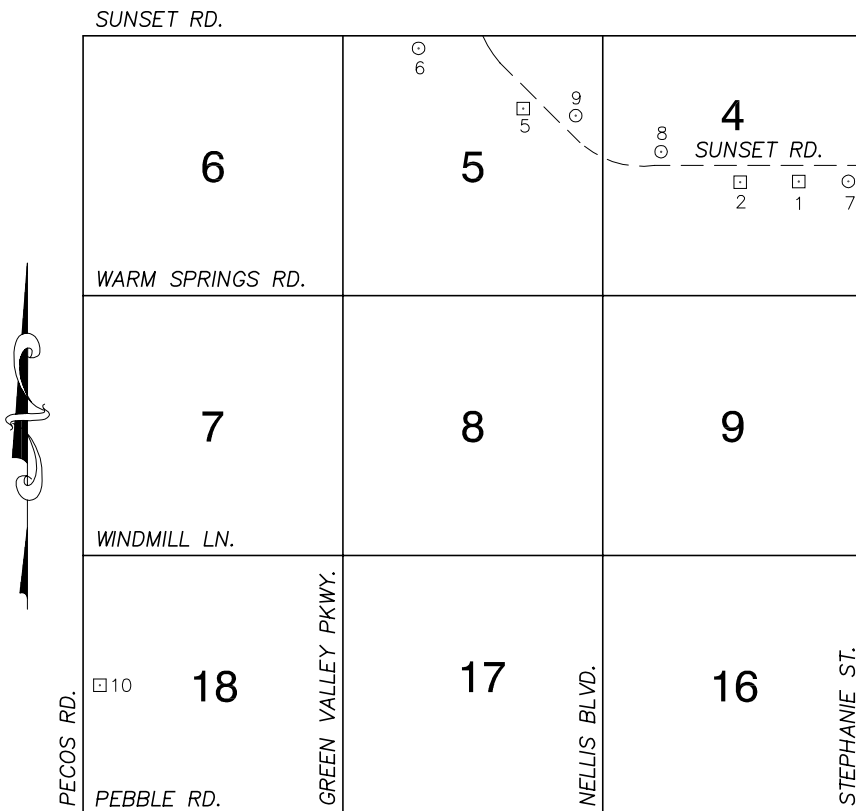




No.	STATION	ELEVATION (METERS)	DESCRIPTION		No.	STATION	ELEVATION (METERS)	DESCRIPTION	
12	7C22 2W4 1997	520.423	S E T	RIVET AND ROUND ALUMINUM PLATE IN TOP OF CURB, NORTHEAST CORNER OF SUNSET RD. AND GIBSON RD. NEAR THE PC OF SUNSET RD.	25				
13	7C22 3C4 1997	529.460	S E T	RIVET AND ROUND ALUMINUM PLATE IN A CONCRETE HEADWALL, NORTH SIDE OF SUNSET RD. 420' WEST OF MARKS ST.	26				
14	7C22 3W6 1997	531.221	S E T	RIVET AND ROUND ALUMINUM PLATE IN TOP OF CURB, NORTH SIDE OF SUNSET RD. IN FRONT OF THE GALLERIA MALL, 300' EAST OF A BANK OF AMERICA BUILDING.	27				
15					28				
16					29				
17					30				
18					31				
19					32				
20					33				
21					34				
22					35				
23					<b>CLARK COUNTY VERTICAL CONTROL v.2003</b>  CLARK COUNTY SURVEYOR'S OFFICE 5051 SOUTH PARADISE ROAD LAS VEGAS, NEVADA 89119 (702) 455-0640				
24									
					CONVERSION FACTOR: METERS X $\left(\frac{3937}{1200}\right)$ = U.S. SURVEY FEET  REVISED 2003      SHEET 2 OF 2 <b>22-62 NE</b>				

# Township 22 South, Range 62 East Northwest Quarter



NORTH AMERICAN VERTICAL  
DATUM OF 1988  
- ALL ELEVATIONS IN METERS -

No.	STATION	ELEVATION (METERS)	DESCRIPTION
1	6C22 4E6	533.553	F N D RIVET AND SQUARE ALUMINUM PLATE IN TOP OF CURB, SOUTHEAST CORNER OF SUNSET RD. AND WHITNEY RANCH DR. NEAR THE PC OF SUNSET RD.
2	6C22 4C4	535.453	F N D RIVET AND SQUARE ALUMINUM PLATE IN TOP OF CURB, SOUTH SIDE OF SUNSET RD. NEAR WEST PROPERTY LINE AT 1601 SUNSET RD.
3			LOST 2003
4			LOST 2003
5	6C22 5NE6	570.768	F N D RIVET AND SQUARE ALUMINUM PLATE IN TOP OF CURB, SOUTHEAST CORNER OF SUNSET RD. AND VALLE VERDE DR. NEAR THE PC OF SUNSET RD.
6	7C22 5NNW6 1997	589.532	S E T RIVET AND ROUND ALUMINUM PLATE IN TOP OF CURB, SOUTHWEST CORNER OF SUNSET RD. AND ATHENIAN WAY NEAR THE PC OF SUNSET RD. (4361 SUNSET RD.)
7	7C22 4E4 1997	532.131	S E T RIVET AND ROUND ALUMINUM PLATE IN TOP OF CURB, NORTHWEST CORNER OF SUNSET RD. AND STEPHANIE ST. NEAR THE PC OF SUNSET RD.
8	7C22 4W6 1997	541.747	S E T RIVET AND ROUND ALUMINUM PLATE IN A CONCRETE HEADWALL, NORTHWEST CORNER OF SUNSET RD. AND EIGER WAY.
9	7C22 5E4 1997	565.207	S E T RIVET AND ROUND ALUMINUM PLATE IN TOP OF CURB, NORTHEAST CORNER OF SUNSET RD. AND SCIMITAR DR. SOUTHEASTERN MOST ENTRANCE TO RIDGEVIEW CONDOMINIUMS.
10	4C22 18W4	632.563	F N D RIVET AND SQUARE ALUMINUM PLATE IN TOP OF CURB, SOUTHEAST CORNER OF WIGWAM AVE. AND PECOS RD. NEAR THE PC OF PECOS RD.
11			

## CLARK COUNTY VERTICAL CONTROL v.2003

CLARK COUNTY SURVEYOR'S OFFICE  
5051 SOUTH PARADISE ROAD  
LAS VEGAS, NEVADA 89119  
(702) 455-0640

CONVERSION FACTOR:

METERS X  $\left(\frac{3937}{1200}\right)$  = U.S. SURVEY FEET

REVISED 2003

SHEET  
1 of 1

22-62  
NW