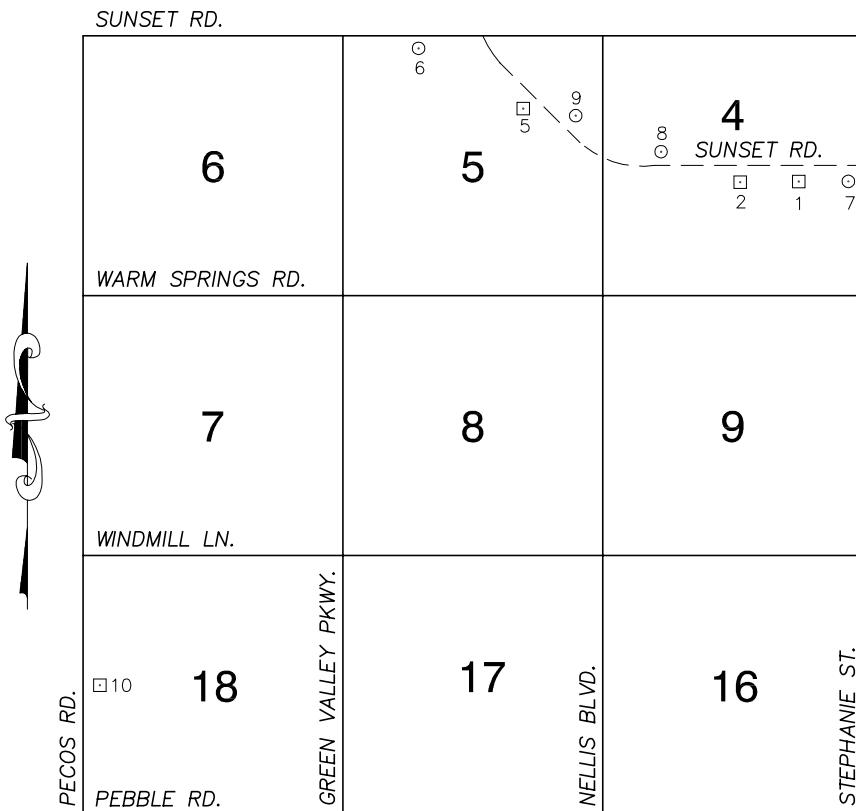


Township 22 South, Range 62 East Northwest Quarter



NORTH AMERICAN VERTICAL
DATUM OF 1988
- ALL ELEVATIONS IN METERS -

No.	STATION	ELEVATION (METERS)	DESCRIPTION
1	6C22 4E6	533.553	F N D RIVET AND SQUARE ALUMINUM PLATE IN TOP OF CURB, SOUTHEAST CORNER OF SUNSET RD. AND WHITNEY RANCH DR. NEAR THE PC OF SUNSET RD.
2	6C22 4C4	535.453	F N D RIVET AND SQUARE ALUMINUM PLATE IN TOP OF CURB, SOUTH SIDE OF SUNSET RD. NEAR WEST PROPERTY LINE AT 1601 SUNSET RD.
3			LOST 2003
4			LOST 2003
5	6C22 5NE6	570.768	F N D RIVET AND SQUARE ALUMINUM PLATE IN TOP OF CURB, SOUTHEAST CORNER OF SUNSET RD. AND VALLE VERDE DR. NEAR THE PC OF SUNSET RD.
6	7C22 5NNW6 1997	589.532	S E T RIVET AND ROUND ALUMINUM PLATE IN TOP OF CURB, SOUTHWEST CORNER OF SUNSET RD. AND ATHENIAN WAY NEAR THE PC OF SUNSET RD. (4361 SUNSET RD.)
7	7C22 4E4 1997	532.131	S E T RIVET AND ROUND ALUMINUM PLATE IN TOP OF CURB, NORTHWEST CORNER OF SUNSET RD. AND STEPHANIE ST. NEAR THE PC OF SUNSET RD.
8	7C22 4W6 1997	541.747	S E T RIVET AND ROUND ALUMINUM PLATE IN A CONCRETE HEADWALL, NORTHWEST CORNER OF SUNSET RD. AND EIGER WAY.
9	7C22 5E4 1997	565.207	S E T RIVET AND ROUND ALUMINUM PLATE IN TOP OF CURB, NORTHEAST CORNER OF SUNSET RD. AND SCIMITAR DR. SOUTHEASTERN MOST ENTRANCE TO RIDGEVIEW CONDOMINIUMS.
10	4C22 18W4	632.563	F N D RIVET AND SQUARE ALUMINUM PLATE IN TOP OF CURB, SOUTHEAST CORNER OF WIGWAM AVE. AND PECOS RD. NEAR THE PC OF PECOS RD.
11			

CLARK COUNTY VERTICAL CONTROL v.2003

CLARK COUNTY SURVEYOR'S OFFICE
5051 SOUTH PARADISE ROAD
LAS VEGAS, NEVADA 89119
(702) 455-0640

CONVERSION FACTOR:

METERS X $\left(\frac{3937}{1200}\right)$ = U.S. SURVEY FEET

REVISED 2003

SHEET
1 of 1

22-62
NW