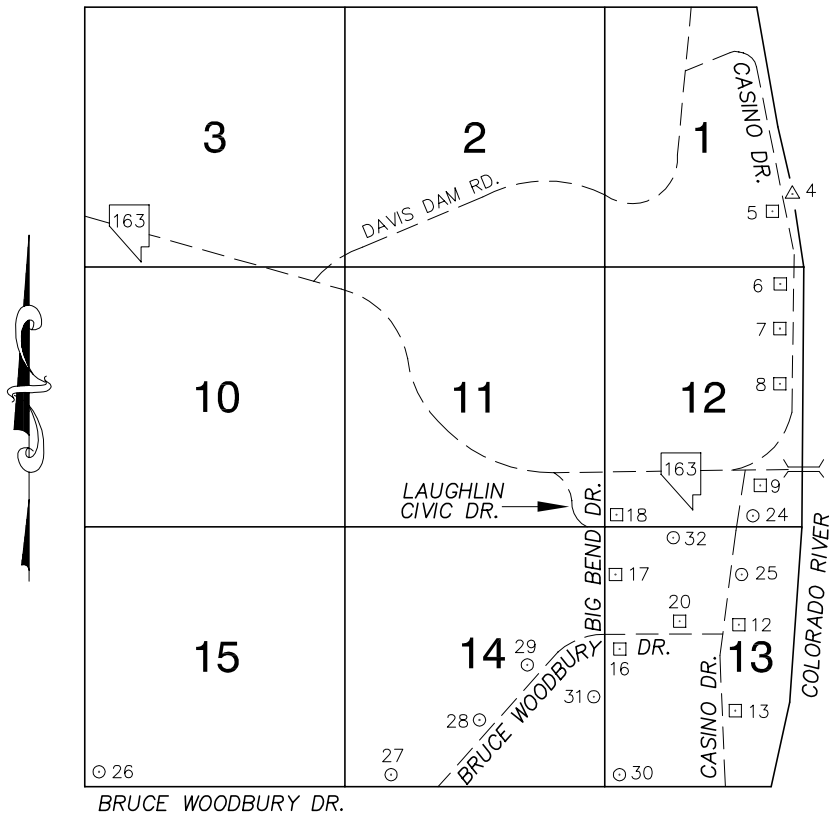


Township 32 South, Range 66 East Northeast Quarter



IN 1992, ELEVATIONS IN THE LAUGHLIN AREA WERE ADJUSTED TO NAVD 1988 FROM NGVD 1929 UTILIZING THE NATIONAL GEODETIC SURVEY'S VERTCON TRANSFORMATION PROGRAM VERSION 1.0. THIS PROGRAM HAS AN ESTIMATED ROOT MEAN SQUARE ERROR OF +/- 1 CM, AND A MAXIMUM ESTIMATED ERROR OF +/- 2.5 CM. THIS 2003 BENCHBOOK INCORPORATES THIS METHODOLOGY.

- ALL ELEVATIONS ARE IN METERS -

No.	STATION	ELEVATION (METERS)	DESCRIPTION
1			LOST 2003
2			LOST 2003
3			LOST 2003
4	USGS	160.218	3 3/4" BRASS CAP, GEOLOGICAL SURVEY B.M. LOCATED IN THE SOUTH PORTION OF A CONCRETE SUPPORT FOR THE CATWALK TO THE GAUGING STATION. STAMPED: ELEV. F N D ABOVE SEA DATUM FEET
5	OC26 1SE6	161.915	F N D RIVET AND SQUARE ALUMINUM PLATE, IN TOP OF HEADWALL WEST SIDE OF CASINO DR, 0.93 MILES NORTH OF THE BRIDGE.
6	OC26 12NNE6	161.439	F N D RIVET AND SQUARE ALUMINUM PLATE, IN TOP OF HEADWALL WEST SIDE OF CASINO DR., 0.74 MILES NORTH OF THE BRIDGE.
7	OC26 12NE6	161.635	F N D RIVET AND SQUARE ALUMINUM PLATE IN TOP OF HEADWALL WEST SIDE OF CASINO DR., 0.40 MILES NORTH OF THE BRIDGE.
8	OC26 12E6	161.877	F N D RIVET AND SQUARE ALUMINUM PLATE IN TOP OF HEADWALL WEST SIDE OF CASINO DR., 0.17 MILES NORTH OF THE BRIDGE.
9	2C26 12SE6	161.811	F N D RIVET AND SQUARE ALUMINUM PLATE IN TOP OF CURB, SOUTHEAST CORNER CASINO DR., AND THE BRIDGE NEAR THE PC OF CASINO DR.

CLARK COUNTY VERTICAL CONTROL v.2003

CLARK COUNTY SURVEYOR'S OFFICE
5051 SOUTH PARADISE ROAD
LAS VEGAS, NEVADA 89119
(702) 455-0640

CONVERSION FACTOR:

METERS X $\left(\frac{3937}{1200}\right)$ = U.S. SURVEY FEET

REVISED 2003

SHEET
1 OF 2

32-66
NE

No.	STATION	ELEVATION (METERS)	DESCRIPTION	No.	STATION	ELEVATION (METERS)	DESCRIPTION
10			LOST 2003	23			LOST 2003
11			LOST 2003	24	0C26 12SSE6 2000	160.413	S E T RIVET AND ROUND ALUMINUM PLATE IN TOP OF CURB, NORTHEAST CORNER CASINO DR. AND LAUGHLIN CIVIC DR. 30' NORTH OF CASINO DR.
12	2C26 13E6	162.646	F N D RIVET AND SQUARE ALUMINUM PLATE IN TOP OF CURB, NORTHEAST CORNER OF CASINO DR. AND BRUCE WOODBURY DR. NEAR THE PC OF CASINO DR.	25	0C26 13NE6 2000	161.541	S E T RIVET AND ROUND ALUMINUM PLATE IN TOP OF CURB, NORTHEAST CORNER OF CASINO DR. AND THE ENTRANCE TO THE FLAMINGO HILTON NEAR THE PC OF CASINO DR.
13	2C26 13SSE6	161.102	F N D RIVET AND SQUARE ALUMINUM PLATE IN TOP OF CURB, NORTHEAST CORNER OF CASINO DR. AND THE SOUTH ENTRANCE TO THE COLORADO BELLE NEAR THE PC OF CASINO DR.	26	0C26 15SWS 2000	272.554	S E T RIVET AND ROUND ALUMINUM PLATE IN A CONCRETE MONUMENT, SOUTH OF BRUCE WOODBURY DR. AT A FENCE 0.52 MILES EAST OF NEEDLES HWY.
14			LOST 1992	27	0C26 14SSW6 2000	202.932	S E T RIVET AND ROUND ALUMINUM PLATE IN A CONCRETE HEADWALL, AT THE SOUTHWEST CORNER OF BRUCE WOODBURY DR. AND THE EAST ENTRANCE OF THE MOHAVE GENERATING STATION.
15			LOST 2003	28	0C26 14SE6 2000	190.895	S E T RIVET AND ROUND ALUMINUM PLATE IN A CONCRETE ELEC. PAD. # (FC4310) IN FRONT OF THE CLARK COUNTY SANITATION DISTRICT AT 2255 BRUCE WOODBURY DR.
16	2C26 13W4	175.558	F N D RIVET AND SQUARE ALUMINUM PLATE IN TOP OF WEST CONCRETE EDGE OF GAS VAULT, SOUTHEAST CORNER OF BIG BEND DR AND BRUCE WOODBURY DR.	29	0C26 14E6 2000	185.335	S E T RIVET AND ROUND ALUMINUM PLATE IN A CONCRETE ELECTRICAL PAD. # (6868) WEST SIDE OF BRUCE WOODBURY DR. 0.29 MILES SOUTHWEST OF BIG BEND DR.
17	2C26 13NNW6	184.509	F N D RIVET AND SQUARE ALUMINUM PLATE IN TOP OF WEST CONCRETE EDGE OF ELECTRICAL VAULT, EAST SIDE OF BIG BEND DR. 0.23 MILES SO. OF LAUGHLIN CIVIC DR.	30	0C26 13SWS 2000	198.229	S E T RIVET AND ROUND ALUMINUM PLATE IN A CONCRETE MONUMENT, WEST SIDE OF BIG BEND DR. 0.56 MILES NORTH OF CASINO DR.
18	2C26 12SWS	183.956	F N D RIVET AND SQUARE ALUMINUM PLATE IN TOP OF CURB, NORTHEAST CORNER OF BIG BEND DR. AND THE CUTOFF ROAD, NEAR THE PC OF THE CUTOFF ROAD.	31	0C26 14SEE6 2000	175.281	S E T RIVET AND ROUND ALUMINUM PLATE IN TOP OF CURB, WEST SIDE OF BIG BEND DR. 900' SOUTH OF BRUCE WOODBURY DR. NEAR A POWER STATION WALL.
19			LOST 1992	32	0C26 13NNW6 2000	177.840	S E T RIVET AND ROUND ALUMINUM PLATE IN TOP OF CURB, SOUTH SIDE OF LAUGHLIN CIVIC DR. 0.25 MILES EAST OF BIG BEND DR.
20	2C26 13W6	169.986	F N D RIVET AND SQUARE ALUMINUM PLATE IN TOP OF CURB, NORTH SIDE OF BRUCE WOODBURY DR., NEAR THE EAST FENCELINE OF THE LAUGHLIN MEDICAL CENTER.	33			
21			LOST 2003	CLARK COUNTY VERTICAL CONTROL v.2003 CLARK COUNTY SURVEYOR'S OFFICE 5051 SOUTH PARADISE ROAD LAS VEGAS, NEVADA 89119 (702) 455-0640			
22			LOST 2003				
				CONVERSION FACTOR: METERS X $\left(\frac{3937}{1200}\right)$ = U.S. SURVEY FEET REVISED 2003 SHEET 2 OF 2 32-66 NE			