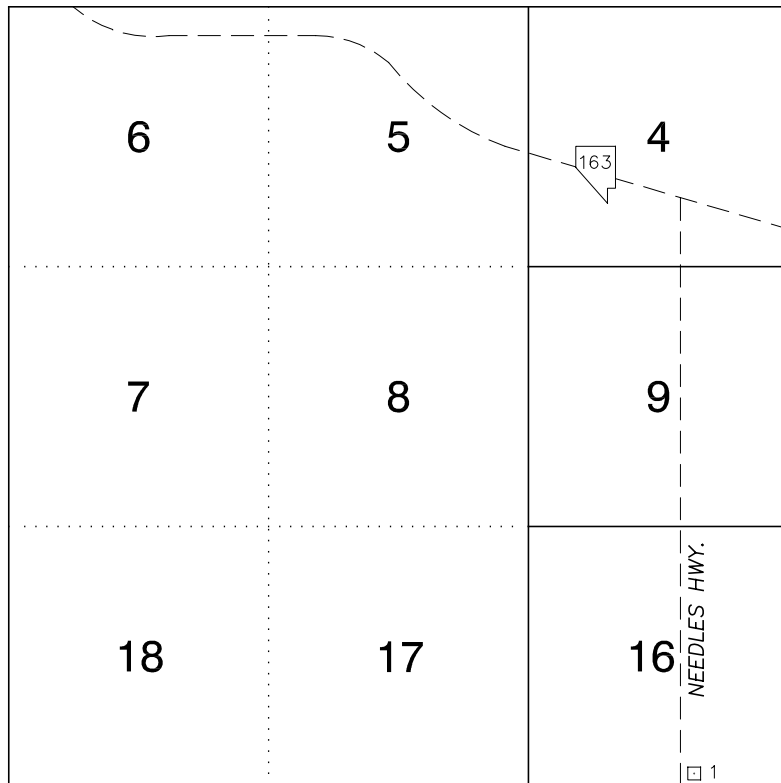


§



IN 1992, ELEVATIONS IN THE LAUGHLIN AREA WERE ADJUSTED TO NAVD 1988 FROM NGVD 1929 UTILIZING THE NATIONAL GEODETIC SURVEY'S VERTCON TRANSFORMATION PROGRAM VERSION 1.0. THIS PROGRAM HAS AN ESTIMATED ROOT MEAN SQUARE ERROR OF +/- 1 CM, AND A MAXIMUM ESTIMATED ERROR OF +/- 2.5 CM. THIS 2003 BENCHMARK INCORPORATES THIS METHODOLOGY.

No.	STATION	ELEVATION (METERS)	DESCRIPTION	
1	2C26 16S4	299.743	F N D	RIVET AND SQUARE ALUMINUM PLATE IN SOUTHWEST CORNER OF A CONCRETE ELECTRICAL TRANSFORMER PAD #FC580, NORTHEAST CORNER OF THE NEEDLES HIGHWAY AND BRUCE WOODBURY DR.
2				
3				
4				
5				
6				
7				
8				
9				
10				
11				

CLARK COUNTY SURVEYOR'S OFFICE  
5051 SOUTH PARADISE ROAD  
LAS VEGAS, NEVADA 89119  
(702) 455-0640

$$\text{METERS} \times \left( \frac{3937}{1200} \right) = \text{U.S. SURVEY FEET}$$

REVISÉD 2003

SHEET  
1 OF 1

32-66  
NW