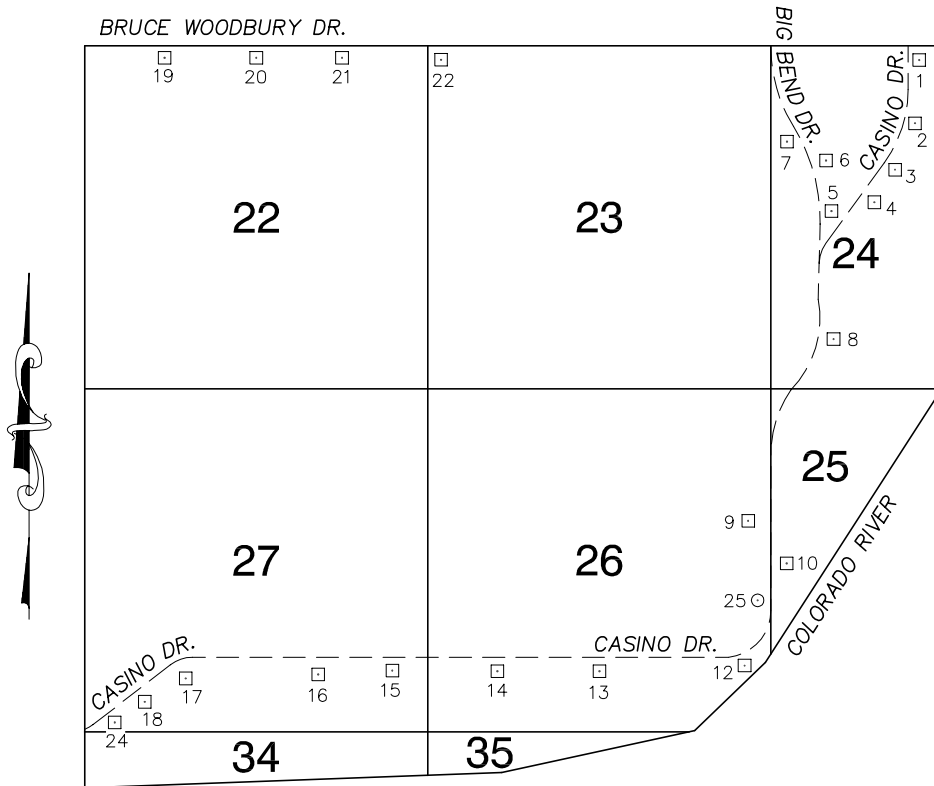


# Township 32 South, Range 66 East Southeast Quarter



IN 1992, ELEVATIONS IN THE LAUGHLIN AREA WERE ADJUSTED TO NAVD 1988 FROM NGVD 1929 UTILIZING THE NATIONAL GEODETIC SURVEY'S VERTCON TRANSFORMATION PROGRAM VERSION 1.0. THIS PROGRAM HAS AN ESTIMATED ROOT MEAN SQUARE ERROR OF +/- 1 CM, AND A MAXIMUM ESTIMATED ERROR OF +/- 2.5 CM. THIS 2003 BENCHBOOK INCORPORATES THIS METHODOLOGY.

— ALL ELEVATIONS ARE IN METERS —

No.	STATION	ELEVATION (METERS)	DESCRIPTION
1	2C26 24NE6	159.980	F N D RIVET AND SQUARE ALUMINUM PLATE IN TOP OF CURB, NORTHEAST CORNER OF CASINO DR. AND THE SOUTH ENTRANCE TO THE GOLDEN NUGGET NEAR THE PC OF CASINO DR.
2	2C26 24N6	171.324	F N D RIVET AND SQUARE ALUMINUM PLATE IN TOP OF CURB, NORTHEAST CORNER OF CASINO DR. AND THE MAIN ENTRANCE TO THE RIVER PALMS CASINO NEAR THE PC OF CASINO DR.
3	2C26 24E6	181.717	F N D RIVET AND SQUARE ALUMINUM PLATE IN TOP OF CURB, NORTHEAST CORNER OF CASINO DR. AND THE PARKING GARAGE ENTRANCE OF THE RIVER PALMS CASINO NEAR THE PC CASINO DR.
4	2C26 24C4	193.962	F N D RIVET AND SQUARE ALUMINUM PLATE IN TOP OF CURB, EAST SIDE OF CASINO DR. NEAR THE PC OF A CURVE, 650' NORTH AND EAST OF BIG BEND DR.
5	2C26 24W4	199.043	F N D RIVET AND SQUARE ALUMINUM PLATE IN TOP OF CURB, NORTHEAST CORNER OF CASINO DR. AND BIG BEND DR. NEAR THE PC OF CASINO DR.
6	2C26 24NW6	210.994	F N D RIVET AND SQUARE ALUMINUM PLATE IN TOP OF CURB, EAST SIDE OF BIG BEND DR., 1150' NORTH OF CASINO DR. EAST OF A POWER POLE WITH NO NUMBER.
7	2C26 24NWW6	217.897	F N D REBAR AND PLATE, WEST SIDE OF BIG BEND DR. 0.37 MILES NORTH OF CASINO DR., NORTH OF THE ENTRANCE TO THE POWER COMPANY SPORTS COMPLEX.
8	2C26 24S6	193.420	F N D RIVET AND SQUARE ALUMINUM PLATE IN TOP OF CURB, SOUTHEAST CORNER OF CASINO DR. AND THE SOUTH ENTRANCE TO HARRAH'S CASINO, 0.28 MILES SOUTH AND WEST OF BIG BEND DR.
9	2C26 26E4	203.086	F N D RIVET AND SQUARE ALUMINUM PLATE IN A CONCRETE MONUMENT, WEST SIDE OF CASINO DR., 0.63 MILES SOUTH AND WEST OF BIG BEND DR. JUST SOUTH OF THE NORTH END OF A GUARD RAIL.
10	2C26 25W4	215.003	F N D RIVET AND SQUARE ALUMINUM PLATE IN A CONCRETE VENT PIPE PAD, EAST SIDE OF CASINO DR., 0.84 MILES SOUTH AND WEST OF BIG BEND DR.
11			LOST 2003

## CLARK COUNTY VERTICAL CONTROL v.2003

CLARK COUNTY SURVEYOR'S OFFICE  
5051 SOUTH PARADISE ROAD  
LAS VEGAS, NEVADA 89119  
(702) 455-0640

CONVERSION FACTOR:

METERS X  $\left(\frac{3937}{1200}\right)$  = U.S. SURVEY FEET

REVISED 2003

SHEET  
1 OF 2

32-66  
SE

No.	STATION	ELEVATION (METERS)	DESCRIPTION	No.	STATION	ELEVATION (METERS)	DESCRIPTION
12	2C26 26SE6	180.676	FND RIVET AND SQUARE ALUMINUM PLATE IN A CONCRETE MONUMENT, SOUTH SIDE OF A CURVE ON CASINO DR. NEAR A PHONE SPLICE BOX AND A GUARD RAIL, 1.36 MILES SOUTH AND WEST OF BIG BEND DR.	25	0C26 26SEE6 2000	211.950	SELET RIVET AND ROUND ALUMINUM PLATE IN A CONCRETE MONUMENT, WEST SIDE OF CASINO DR. 0.97 MILES SOUTH AND WEST OF BIG BEND DR. NEAR A GUARD RAIL.
13	2C26 26S6	193.380	FND RIVET AND SQUARE ALUMINUM PLATE IN A CONCRETE VENT PIPE PAD, SOUTH SIDE OF CASINO DR. 1.63 MILES SOUTH AND WEST OF BIG BEND DR.	26			
14	2C26 26SW6	176.010	FND RIVET AND SQUARE ALUMINUM PLATE IN A CONCRETE PAD FOR ELECTRICAL TRANSFORMER #FC535, SOUTH SIDE OF CASINO DR. 1.95 MILES SOUTH AND WEST OF BIG BEND DR.	27			
15	2C26 27SE6	174.977	FND RIVET AND SQUARE ALUMINUM PLATE IN A CONCRETE PAD FOR ELECTRICAL TRANSFORMER #FC527, SOUTH SIDE OF CASINO DR. 2.23 MILES SOUTH AND WEST OF BIG BEND DR.	28			
16	2C26 27S6	173.793	FND RIVET AND SQUARE ALUMINUM PLATE IN A CONCRETE PAD FOR 2 SPRINKLER CONTROL BOXES, SOUTH SIDE OF CASINO DR. 2.41 MILES SOUTH AND WEST OF BIG BEND DR.	29			
17	2C26 27SW6	172.118	FND RIVET AND SQUARE ALUMINUM PLATE IN TOP OF CURB, SOUTH SIDE OF CASINO DR. AT 1175 CASINO DR. (CENTEL BUILDING), 2.41 MILES SOUTH AND WEST OF BIG BEND DR.	30			
18	2C26 27SWW6	168.611	FND RIVET AND SQUARE ALUMINUM PLATE IN A CONCRETE ELECTRICAL TRANSFORMER PAD, WITH NO NUMBER, SOUTH SIDE OF CASINO DR., 2.96 MILES SOUTH AND WEST OF BIG BEND DR.	31			
19	2C26 22NNW6	261.362	FND RIVET AND SQUARE ALUMINUM PLATE IN A CONCRETE MONUMENT, SOUTH OF BRUCE WOODBURY DR., 18' EAST OF CENTERLINE OF GATE IN CHAIN LINK FENCE, 0.77 MILES EAST OF THE NEEDLES HIGHWAY.	32			
20	2C26 22N4	247.987	FND RIVET AND SQUARE ALUMINUM PLATE IN A CONCRETE MONUMENT, SOUTH OF BRUCE WOODBURY DR. AT THE FENCE, 1.20 MILES EAST OF THE NEEDLES HIGHWAY, 10.5 FT. EAST OF: $\frac{1}{4} \frac{S 15}{S 22}$	33			
21	2C26 22NNE6	234.170	FND RIVET AND SQUARE ALUMINUM PLATE IN A CONCRETE MONUMENT, SOUTH OF BRUCE WOODBURY DR. AT THE FENCE, 1.27 MILES EAST OF THE NEEDLES HIGHWAY.	34			
22	2C26 23NWS	220.892	FND RIVET AND SQUARE ALUMINUM PLATE IN A CONCRETE MONUMENT. SOUTH OF BRUCE WOODBURY DR. AT THE FENCE, 1.52 MILES EAST OF THE NEEDLES HIGHWAY, 10 FT. EAST OF: $\frac{S15}{S22}   \frac{S14}{S23}$	35			
23			LOST 2003	CLARK COUNTY VERTICAL CONTROL v.2003			
24	2C26 27SSW6	168.552	FND RIVET AND SQUARE ALUMINUM PLATE IN A CONCRETE PAD FOR ELECTRIC TRANSFORMER #DFFC 537, SOUTH SIDE OF CASINO DR. 3.09 MILES SOUTH AND WEST OF BIG BEND DR.	CLARK COUNTY SURVEYOR'S OFFICE 5051 SOUTH PARADISE ROAD LAS VEGAS, NEVADA 89119 (702) 455-0640			CONVERSION FACTOR: METERS X $\left(\frac{3937}{1200}\right)$ = U.S. SURVEY FEET
				REVISED 2003		SHEET 2 OF 2	32-66 SE